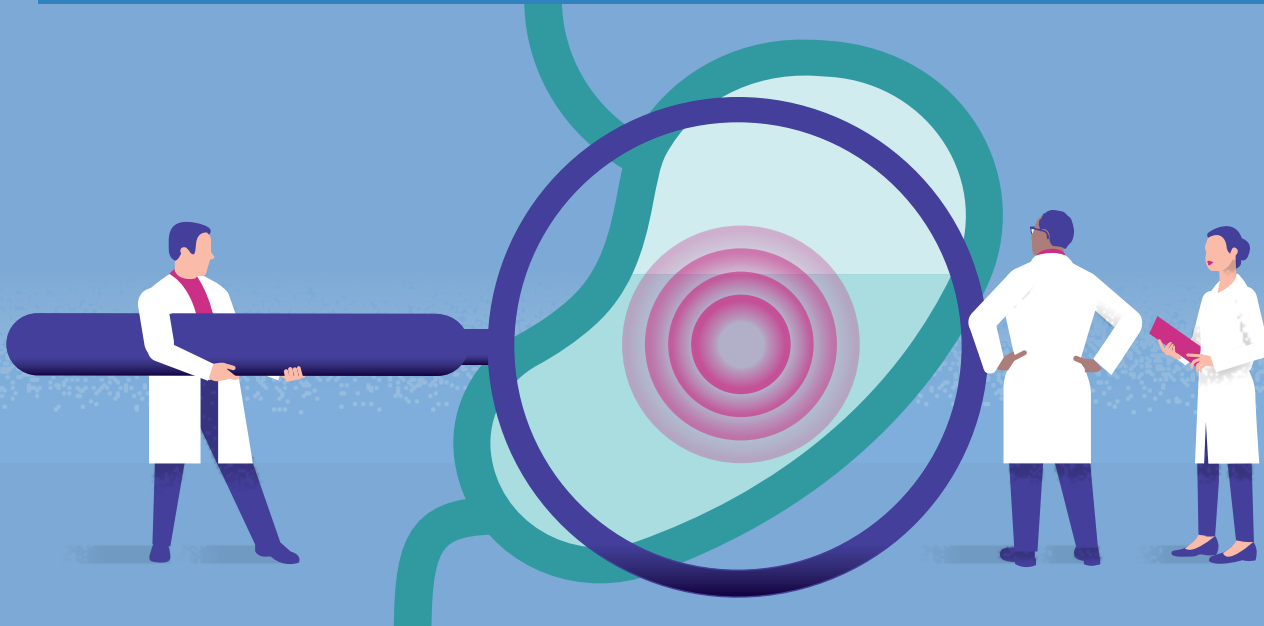


Upper Endoscopy Preparation Instructions



What is an upper endoscopy and what can I expect during the procedure?

An upper endoscopy, also known as an esophagogastroduodenoscopy (EGD), is a procedure that allows your doctor to examine the inside of your upper gastrointestinal (GI) tract: the esophagus (swallowing tube), stomach, and the duodenum (first portion of the small intestine). During the procedure, an endoscope, which is a long, flexible tube with a light and camera at the end, is used to view the inside of your upper GI tract. You may be given sedation/anesthesia for this test. The upper endoscopy usually takes 10 to 15 minutes to complete.



LOCATION Your upper endoscopy will likely take place in one of six UCLA procedure locations listed below. Complete list of locations are listed on the last page.

- UCLA Medical Center
200 UCLA Medical Plaza**
(Check in 1 hour before procedure time)
200 UCLA Medical Plaza #320
Los Angeles, CA 90095
- Santa Clarita**
(Check in 1 hour before procedure time)
25775 McBean Pkwy #115
Valencia, CA 91355

- Ronald Reagan UCLA
Medical Center**
(Check in 2 hours before procedure time)
757 Westwood Plaza,
Admissions, Room 1314
Los Angeles, CA 90095
- Torrance / South Bay**
(Check in 1 hour before procedure time)
2780 Skypark Dr #135
Torrance, CA 90505

- UCLA Medical Center,
Santa Monica**
 - Suite #1401
(Check in 1 hour before)
 - Suite #G-314
(Check in 2 hours before)
1250 16th St
Santa Monica, CA 90404
- West Hills**
(Check in 1 hour before procedure time)
7320 Woodlake Ave #320
West Hills, CA 91307

How do I prepare for an upper endoscopy?



- DISCUSS MEDICATIONS** and **HEALTH CONDITIONS** you have with your doctor.

You will require special instructions regarding these medications:

- Anticoagulants/Blood thinners
- Antiplatelet medications such as Plavix
- Blood pressure medications
- If you are instructed to do so, stop taking all iron, aspirin, and non-steroidal anti-inflammatory (NSAID) medications, such as Motrin, Ibuprofen, and Advil.

Notify your doctor if you have these health conditions:

- Heart murmurs
- Previous heart valve surgery
- Bleeding disorders



- SCHEDULE** your upper endoscopy. Please call our **Patient Communication Center (PCC)** at **310-825-7540** to schedule your procedure if it was not scheduled for you at your clinic appointment. Note: The PCC may also call you to schedule the procedure.



- ARRANGE** for a friend or family member to drive you home after your procedure if you are being sedated as you will still be drowsy and it is unsafe to drive.

- You must have an adult accompany you home the day of your procedure, even if you take a cab. The medical procedure staff must be able to contact whoever will accompany you. If this person cannot be confirmed prior to the procedure, your procedure will be rescheduled for your safety.
- You should not drive a car, operate machinery, or make any legal decisions until the day after your procedure.



- NIGHT BEFORE** your procedure, **do not eat solid foods** after 12:00 am (midnight). **Do not take any medications** after midnight unless your doctor has specifically asked that you take them (i.e. blood pressure medications). You may **only drink clear liquids** after midnight. Clear liquids consist only of liquids that you would be able to read a newspaper through.

CLEAR LIQUIDS INCLUDE:

- Water, mineral water
- Clear fruit juices without pulp (apple, white grape, white cranberry, lemonade, etc.)
- Clear carbonated and non-carbonated soft drinks or sports drinks
- Store-bought and >99% fat-free broth (chicken, beef, vegetable, or bone broth)
- Popsicles or gelatin (such as Jell-O)
- Coffee or tea (without milk or cream)

Do not consume any red-, purple-, or orange-colored liquids.



- 4 HOURS BEFORE** your procedure, **STOP DRINKING ALL CLEAR LIQUIDS AND MEDICATIONS. This means that you should not have anything to eat or drink 4 hours before your upper endoscopy and onward.**

AFTER YOUR UPPER ENDOSCOPY

You will spend time in our post-procedure unit where our nursing staff will monitor you. Once it is felt safe, you will be able to leave with your driver/escort. You will receive a printed copy of your results for your own records. Once home, you may resume your normal diet and medications.

UCLA Upper Endoscopy Procedure Locations

UCLA LOCATIONS

WESTWOOD

- UCLA Medical Center
200 UCLA Medical Plaza**
(Check in 1 hour before procedure time)
200 UCLA Medical Plaza #320
Los Angeles, CA 90095

- Ronald Reagan UCLA Medical Center**
(Check in 2 hours before procedure time)
757 Westwood Plaza,
Admissions, Room 1314
Los Angeles, CA 90095

SANTA CLARITA

- Santa Clarita**
(Check in 1 hour before procedure time)
25775 McBean Pkwy #115
Valencia, CA 91355

SANTA MONICA

- UCLA Medical Center, Santa Monica**
 - Suite #1401
(Check in 1 hour before)
 - Suite #G-314
*(Check in 2 hours before)*1250 16th St
Santa Monica, CA 90404

TORRANCE

- Torrance / South Bay**
(Check in 1 hour before procedure time)
2780 Skypark Dr #135
Torrance, CA 90505

WEST HILLS

- West Hills**
(Check in 1 hour before procedure time)
7320 Woodlake Ave #320
West Hills, CA 91307

OTHER LOCATIONS

BURBANK

- Providence Saint Josephs Health Center**
(Check in 1.5 hours before procedure time. Labs and EKG done within 30 days)
501 S. Buena Vista St
Burbank, CA 91505

ENCINO

- Specialty Surgical Center Encino**
(Check in 1 hour before procedure time)
16501 Ventura Blvd #103
Encino, CA 91436

SANTA CLARITA

- Henry Mayo Newhall Memorial Hospital**
(Check in 1 hour before procedure time)
23845 McBean Pkwy
Valencia, CA 91355

THOUSAND OAKS

- Los Robles Hospital**
(Check in 1 hour before procedure time)
215 W. Janss Rd
Thousand Oaks, CA 91360

- Los Robles Surgicenter**
(Check in 1 hour before procedure time)
2190 Lynn Rd #100
Thousand Oaks, CA 91360

TORRANCE

- Pacific Endo Surgical Center**
(Check in 1 hour before procedure time)
3445 Pacific Coast Highway #120
Torrance, CA 90505

WEST HILLS

- West Hills Hospital**
(Check in 2 hours before procedure time)
7300 Medical Center Dr
West Hills, CA 91307

WESTLAKE VILLAGE

- Specialty Surgical Center Westlake**
(Check in 1 hour before procedure time)
696 Hampshire Rd #100
Westlake Village, CA 91361