



Health

UCLA HEALTH SCIENCES MEDIA REPORT

Jan. 12 - 18, 2018

Note: Website links may expire without notice. Some sites require password registration. If you cannot access a story or would like to obtain a copy, please call (310) 267-7022.



[NBC News.com](https://www.nbcnews.com): Parents meet two dozen strangers who saved their toddler's life

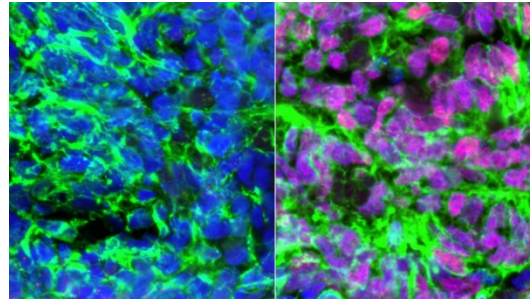
(Photo: Reed Hutchinson)





[KPCC-FM](#): Media highlight
UCLA expertise amid flu
outbreak

(Photo: UCLA Health)



[Futurism](#): Scientists coax
human stem cells into
becoming touch neurons

(Photo: UCLA/Stem Cell Reports)



Post



Tweet



Post



Post



Tweet



Post

Parents meet two dozen strangers who saved their toddler's life

[NBC News.com](#) covered a special event hosted by the UCLA Blood & Platelet Center that introduced a 2-year-old girl and her parents to two dozen of the 71 people whose blood and platelet donations helped save her life. Skye Savren-McCormick needed 77 transfusions during her 10-month hospitalization and treatment for two rare types of cancer. The story was also reported by KCBS-TV, [KNBC-TV](#), KFI 640AM, the [Ventura County Star](#), [La Opinion](#) and [Babble](#). Dr. Satiro De Oliveira, pediatric cancer specialist at UCLA Mattel Children's Hospital, and Dr. Dawn Ward, medical director of the UCLA Blood & Platelet Center, were interviewed. Twenty-seven affiliates including WTNZ-TV (Knoxville, Tennessee), picked up the KNBC story.

Media highlight UCLA expertise amid flu outbreak

UCLA Health physicians commented in numerous stories about the prevalence and physiological effects of flu, how to treat it and how to minimize the chances of contracting the virus.

- **Dr. Brian Prestwich**, a family medicine and lead physician at UCLA Health Century City, was interviewed on [KPCC-FM's](#) "Take Two" program.
- **Dr. Tara Vijayan**, assistant professor of medicine in the division of infectious diseases at the David Geffen School of Medicine at UCLA, was quoted in a [New York Times](#) story.
- **Dr. Jaime Deville**, clinical professor of pediatrics in the division of infectious diseases at the David Geffen School of Medicine at UCLA and UCLA Mattel Children's Hospital, was interviewed on [KCRW-FM's](#) "Press Play."
- **Dr. Deborah Lehman**, professor of clinical pediatrics and assistant dean for student affairs at the David Geffen School of Medicine at UCLA, and **Dr. Joseph Ladapo**, associate professor of medicine in the division of general internal

medicine and health services research, commented in stories published in [Medical Xpress](#) and [MyScience.org](#).

- **Dr. Wally Ghurabi**, medical director of the Nethercutt Emergency Center at UCLA Medical Center, Santa Monica, was quoted in stories published by [newsmax.com](#) and [Kaplan Herald](#).
- The increase in flu patients visiting the emergency department at UCLA Medical Center, Santa Monica, was referenced in stories published by [The Daily Mail](#), [Daily Mail on Sunday](#) and [Express Digest](#).
- A [Malibu Times](#) article on the flu epidemic noted that physicians at the UCLA Health clinic in Malibu had seen an increase in flu cases and requests for flu shots this year.

Scientists coax human stem cells into becoming touch neurons

[Futurism](#), [the Medical News](#), [Environmental News Network](#), [Tech Site](#), [Lab Manager Magazine](#), [Genetic Engineering & Biotechnology News](#), [Noticias de la Ciencia y la Tecnología](#), [Business Monkey News](#), [Macaco De Negócio Notícia](#) and [Edgy Labs Home](#) reported on Samantha Butler becoming the first person to create sensory interneurons, the cells that enable our sense of touch, from stem cells. Butler is an associate professor of neurobiology and a member of the Broad Stem Cell Research Center at UCLA.

'Bubble baby' cure developed at UCLA is point of pride for stem cell agency

[KQED](#) and the Los Angeles Business Journal featured Dr. Donald Kohn of the UCLA Broad Stem Cell Research Center in a story about California's investment in stem cell research through the California Institute for Regenerative Medicine. Kohn's gene therapy treatment for Severe Combined Immune Deficiency, which has cured more than 50 babies to date, was highlighted as a critical outcome of the state's \$3 billion dollar investment.

Pediatric expert sets the record straight on measles, more

HeadLine News' "Michaela" show interviewed Dr. Nina Shapiro, a professor of head and neck surgery and director of pediatric otolaryngology at UCLA Mattel Children's Hospital, about a possible measles exposure to travelers at O'Hare Airport and the potential side effects of Tamiflu.

Mapping the genetic 'switches' behind human brain evolution

[Neuroscience News](#), [Technology Networks](#), [Science Daily](#), [Medical Xpress](#), [Science Newsline](#), [Scienmag](#), [Healthcare in Europe.com](#) and [Health News Digest](#) featured research by Dr. Daniel Geschwind, a UCLA professor of neurology and psychiatry and the Gordon and Virginia MacDonald Distinguished Chair in Human Genetics, describing the first map of gene regulation in human neurogenesis, the process by which neural stem cells turn into brain cells and the cerebral cortex expands in size.

How to recognize early symptoms of Alzheimer's disease

[KABC-TV](#) featured Dr. Gary Small, director of the UCLA Longevity Center, in a piece about distinguishing normal, minor lapses in memory from symptoms of early dementia.

First-of-its-kind effort to voluntarily screen college students for depression

WPVI-TV, Philadelphia, Pennsylvania, covered UCLA's campus-wide initiative called the Depression Grand Challenge, an initiative to radically transform how depression is treated starting with voluntary screening of UCLA students. Dr. Nelson Freimer, director of the Center for Neurobehavioral Genetics at UCLA's Semel Institute for Neuroscience and Human Behavior, commented.

Using gene therapy to combat HIV

KCBS-AM, San Francisco, [Reuters Health](#), [Daily Beast](#), [Healthline](#), [Contagion Live](#), [Inquisitr](#) and [Natap.org](#), reported on UCLA research led by Scott Kitchen finding that, through gene therapy, blood-forming stem cells could be engineered to carry chimeric antigen receptor (CAR) genes to make cells that can detect and destroy HIV-infected cells. In the research, engineered cells destroyed the infected cells and persisted for more than two years, suggesting the potential to create long-term immunity from the virus that causes AIDS. [ReachMD](#) ran the Inquisitr article, and [Erie News Now](#), [WBNG.com](#), [NBC-2.com](#), [WPTA21.com](#), and [Western Mass News](#) syndicated a [HealthDay News](#) report. Kitchen, associate professor of medicine in the division of hematology oncology and director of the UCLA Humanized Mouse Core Laboratory, was quoted in much of the coverage.

HIV-positive adults undertreated for cardiovascular disease

[American Heart Association News](#) reported on research led by Dr. Joseph Ladapo, associate professor of medicine in the division of general internal medicine and health services research. His study found that doctors were less likely to recommend cholesterol-lowering statin drugs and aspirin for HIV-positive people with risk factors for heart disease and stroke than they were for patients without HIV. The [Coeur d'Alene Press](#), [Columbia Basin Herald](#), [Bonner County Daily Bee](#) and [Beloit Daily News](#) ran the article.

Using multiple immunotherapies to treat people with lung cancer

[Targeted Oncology](#) published a story, on how physicians sequence multiple immunotherapies to treat people with advanced lung cancer, that featured Dr. Edward Garon, an associate professor of hematology/oncology and a UCLA Jonsson Comprehensive Cancer Center member.

A push for at-home colon cancer screening tests

[Modern Healthcare](#) published a story about UCLA Health's use of at-home colon cancer screening tests for patients. Dr. Nasim Afsar-manesh, associate clinical professor and chief quality officer in the department of medicine, was quoted.

Exploring the link between exercise and gut bacteria

[Healthline](#) published an article about a study examining the impact of exercise on gut bacteria. The article featured the insights of Dr. Emeran Mayer, director of the G. Oppenheimer Center for Neurobiology of Stress and Resilience and co-director of the CURE: Digestive Diseases Research Center.

Are fat-burning teas safe?

[Prevention](#) featured comments from Dr. Adrienne Youdim in a story about whether fat-burning teas are safe and effective. Youdim is voluntary associate clinical professor of medicine in the division of general internal medicine and health services research.

Drinking hot tea could preserve your eyesight

[The Jordan Times](#), [Japan Today](#), [Business Recorder](#), [Bend Bulletin](#), WTAM-AM (Cleveland, Ohio) and a Time-Warner "Medical Minute" segment on Spectrum News in Birmingham, New York, and Charlotte, North Carolina, reported on a UCLA study suggesting that drinking hot caffeinated tea helps ward off glaucoma. Dr. Anne Coleman, the Fran and Ray Stark Professor of Ophthalmology at the UCLA Stein Eye Institute, led the research, which was published by the British Journal of Ophthalmology.

Patients' involvement in medical notes could aid care

[HealthTech](#) magazine reported on research led by Dr. John Mafi finding that patients could benefit when they're invited to co-produce medical notes, called "OurNotes," with their doctors. Mafi is an assistant professor of medicine in the division of general internal medicine and health services research.

Using telehealth and new technology for weight loss

[mHealthIntelligence](#) published a story about a study conducted by researchers at UCLA, California State University at Long Beach and the University of Saint Mary finding that a telehealth platform and a mobile health (mHealth) app can lead to significant reductions in weight and body mass for obese people.

Mobile stroke unit drives more interest locally

[Los Angeles Wave](#) covered the expansion of UCLA Health's mobile stroke unit into additional parts of Los Angeles County. The unit, the first on the West Coast, will enable the rapid delivery of brain-saving medications to stroke patients in other cities within the county, including Cerritos, Artesia, Bellflower, Lakewood, Paramount, Signal Hill, Hawaiian Gardens and Norwalk.

Horses and humans, bonded through botulism

[Discover](#) magazine published an article by Dr. Claire Panosian Dunavan, professor of medicine emeritus/recalled in the division of infectious diseases, on the botulism bond between horses and humans.

Gift gives boost to dental school for community-based clinical education

[Dentistry Today](#) and [Becker's Healthcare](#) reported on a \$1.5 million gift that Delta Dental of California gave to the UCLA School of Dentistry for a new community-based clinical education program, specifically targeting Medicaid patients and those having problems with access to care. The funds will cover start-up costs associated with the program, including an online mentorship program.

Retail Therapy in Century City

[Century City News](#) published an article about UCLA Health's latest advancement in retail therapy with the opening of a new medical practice at the remodeled Westfield Century City shopping mall.

This week on "Ask the Doctors"

UCLA Health internists Dr. Robert Ashley, Dr. Eve Glazier and Dr. Elizabeth Ko address health-related questions in the recurring "Ask the Doctors" column, syndicated by more than 50 outlets nationwide. A sampling of the stories from this past week's column:

- On flesh-eating bacteria, featured in [Indiana Gazette](#)
 - On the variety of health care professions providing care, featured in [Standard Speaker](#)
 - On the flu vaccine, featured in [The Spokesman-Review](#)
 - On the importance of sunscreen at all times, featured in [The Cumberland Times-News](#)
 - On shampooing at salons, featured in [The Frederick News-Post](#)
 - On the rarity of strep and septic shock, featured in [Aberdeen News](#).
-

QUOTED

“When I went to medical school, I learned that babies had immature, wimpy immune systems. We now realize that in fact they have very sophisticated immune systems, they’re just programmed in a different way.”

– Dr. Grace Aldrovandi, professor of pediatrics and chief of infectious diseases, in [The Scientist](#)



Dr. Grace Aldrovandi, professor of pediatrics and chief of infectious diseases at UCLA Mattel Children’s Hospital, was quoted in [The Scientist](#) in an article about how infant immune systems learn to tolerate gut bacteria.

Dr. James Cherry, a distinguished professor of pediatrics and infectious diseases at UCLA’s David Geffen School of Medicine and Mattel Children’s Hospital, was quoted in a [Healio: Infectious Diseases in Children](#) article about studies linking a rise in pertussis cases to waning vaccine immunity and nonmedical vaccine exemptions.

Steve Cole, director of the UCLA Social Genomics Core Laboratory, commented in a [The Guardian](#) story about Britain’s first “minister for loneliness” and the health impact of social isolation. Related stories in the [Orlando Sentinel](#) and [Los Angeles Times](#) also referenced Cole’s research.

Dr. Ravi Dave, director of interventional cardiology for UCLA Health, commented in a [Pasadenanow.com](#) article on upcoming Heart Month activities in Pasadena.

Marlena Fejzo, an associate researcher in the David Geffen School of Medicine at UCLA, commented in a [Reuters](#) story on a study finding that a morning sickness drug might not be as effective as previously thought. The Reuters story was also published in [Business Insider](#) and [NewsMax](#).

Dr. Hayley Goldbach, resident physician in dermatology at UCLA Health, was quoted in [Cure Today](#) in a story about tattoo safety.

Dr. David Heber, professor emeritus of medicine, was quoted in an [Eating Well](#) story on heart healthy foods that referenced a study by UCLA's Center for Human Nutrition on pomegranate juice and antioxidant capacity.

Gerald Kominski, professor of health policy and management at the UCLA Fielding School of Public Health and director of the Fielding School's UCLA Center for Health Policy Research, commented in a [MedPage Today](#) story about the government's health care priorities in the upcoming year.

Dr. Yolanda Reid Chassiakos, clinical assistant professor of pediatrics at UCLA Mattel Children's Hospital, commented in [Reuters](#) about a study examining screen time and sleep quality in early childhood. The story was syndicated in [Business Insider](#), [Yahoo! Finance](#) and 23 other outlets.

Dr. Gail Wyatt, a professor of psychiatry and biobehavioral sciences at UCLA's Semel Institute, was quoted in an article that appeared in [The Body](#) about how sexual abuse at an early age increases a woman's risk of becoming HIV-positive.

Nancy Wayne, UCLA associate vice chancellor of research and a professor of physiology at the David Geffen School of Medicine at UCLA, commented in [Well and Good](#) about the health risks of store receipts containing Bisphenol A, or BPA.

BRIEFS

[The Houston Chronicle](#) cited research from UCLA Mattel Children's Hospital about children's vision problems in a story about free eye exams and glasses for children in Houston. The story was syndicated in [SFGate](#), [The Sacramento Bee](#), [The Napa Valley Register](#) and 43 other publications.

A [Kidspot](#) story on "baby brain" referenced a UCLA study on sleep deprivation. Lead author Dr. Itzhak Fried, a professor of neurosurgery at the David Geffen School of Medicine at UCLA, was quoted.

Research from UCLA Health showing the benefits of animal-assisted therapy was cited in a [Radish Magazine](#) (Rochester, Minnesota) story about various programs in Rochester that use animal-assisted therapy in hospitals, schools and public libraries.

[Bright Side](#) featured the superhero window washers at UCLA Mattel Children's Hospital in a roundup of recent acts of kindness.

CONTENT CREATED BY MEDIA RELATIONS

[The flu vaccine could get a much-needed boost](#) UCLA Newsroom

[Voluntary mental health screening program identifying at-risk students at UCLA](#) UCLA Newsroom

[Everyone's talking about the flu. Here's what to do about it](#) UCLA Newsroom

[UCLA School of Dentistry receives \\$1.5 million for community-based education](#) UCLA Newsroom

[Study shows doctors record better notes after using best-practices program](#) UCLA Newsroom



This report features media placements from UCLA Health, which includes the David Geffen School of Medicine at UCLA, Ronald Reagan UCLA Medical Center, UCLA Medical Center, Santa Monica, UCLA Mattel Children's Hospital, the Stewart and Lynda Resnick Neuropsychiatric Hospital at UCLA, the UCLA Health Clinics and the UCLA Faculty Practice Group.

It also includes placements from the UCLA Fielding School of Public Health, the UCLA School of Nursing, the UCLA School of Dentistry, the UCLA Jonsson Comprehensive Cancer Center and the UCLA Eli and Edythe Broad Center of Regenerative Medicine and Stem Cell Research.

UCLA's Health Sciences Media Relations office e-publishes this report weekly. For more information, please contact Tami Dennis, executive director of media relations, or call the

Media Relations office at (310) 267-7022. Media Relations also offers publicity for new research, medical breakthroughs, inspirational patient stories and more. To identify the appropriate public information officer for your department, visit <https://www.uclahealth.org/Newsroom/Pages/Media-Relations-Directory.aspx>.