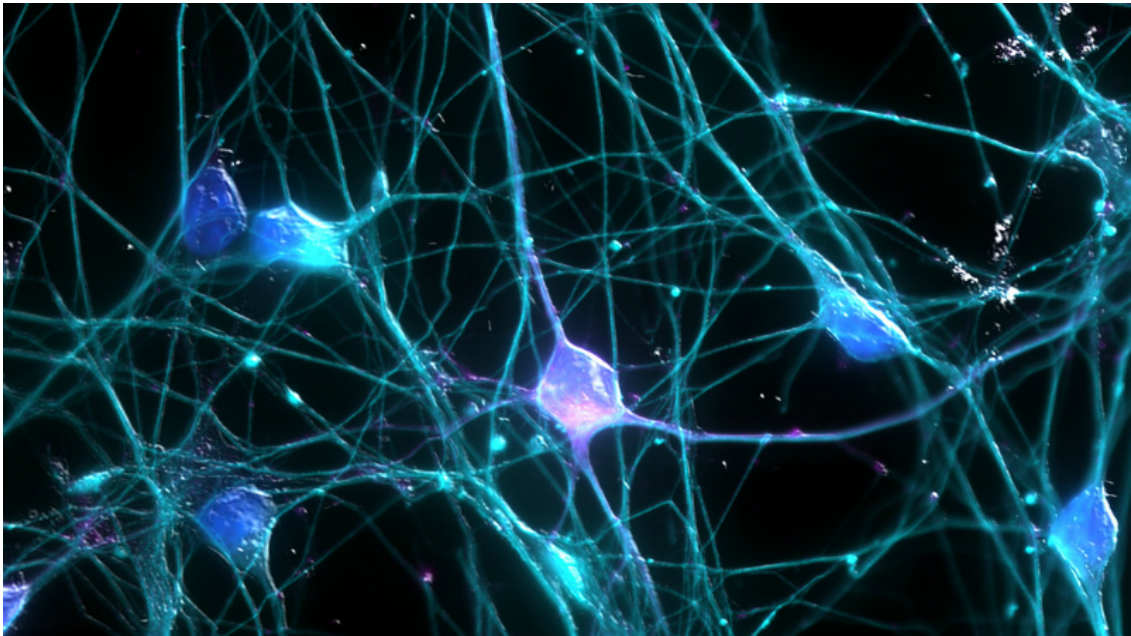


**UCLA**

**Health**

**UCLA HEALTH SCIENCES MEDIA REPORT**  
**February 2-8, 2018**

**Note:** Website links may expire without notice. Some sites require password registration. If you cannot access a story or would like to obtain a copy, please call (310) 267-7022.



[Scientific American](#): Brains of those with psychiatric disorders show similarities at the molecular level

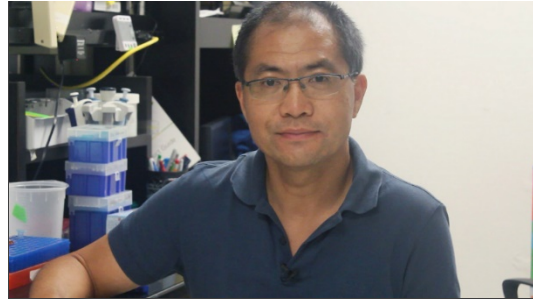
(Photo: Ardy Rahman/UCI Research; [Flickr](#))



[NPR](#):

Her seizures looked like epilepsy, but they weren't

(Photo: Maria Fabrizio/NPR)



[Wall Street Journal](#):

A new approach to the flu vaccine

(Photo: UCLA Health)



## FEATURES

### **Brains of those with psychiatric disorders show similarities at the molecular level**

[Scientific American](#), [Science Magazine](#), [NPR](#) and [The Washington Post](#) reported on new research by Daniel Geschwind, a professor of neurology and psychiatry and the Gordon and Virginia MacDonald Distinguished Chair in Human Genetics. The research, which appears in the journal *Science*, describes overlapping patterns of genetic activity across five major psychiatric diseases. The story was also reported by [The Verge](#); [HealthDay](#), with syndication to [U.S. News & World Report](#), [New Scientist](#), [Health.com](#) and [The Scientist](#); and [Spectrum](#), which syndicated to *Scientific American*.

### **Her seizures looked like epilepsy, but they weren't**

[NPR](#) featured Dr. John Stern, a professor of neurology and director of UCLA's epilepsy clinical program, and Patricia Walshaw, a psychologist who directs the neurobehavioral epilepsy program at UCLA, in a story about psychogenic non-epileptic seizures, or PNES, a surprisingly common psychological disorder that causes seizures but isn't epilepsy and can't be treated with epilepsy drugs. The NPR story received more than 3,500 shares and interactions across social media and was syndicated by 66 affiliates.

### **Wall Street Journal spotlights new flu vaccine approach**

A health column in the [Wall Street Journal](#) (subscription required) explored a study by Ren Sun, professor of molecular and medical pharmacology at the David Geffen School of

Medicine at UCLA, that advanced the potential to replace annual flu shots with a lifetime immunization effective against all strains of the virus. Showing promise in mice, the findings were published by Science. The WSJ story was cited by [Kaiser Health News](#).

### **Treating seizures at their source**

KTTV-TV featured Dr. Dawn Eliashiv, a professor of neurology, in a story about responsive neurostimulation, or RNS therapy, for epilepsy, which utilizes a “pacemaker for the brain” – a device that gathers brain data and reduces seizures in people with epilepsy.

KTTV-TV: <http://bit.ly/2nSd9NC>

### **The impact of systemic racism on the health of black women**

[Jezebel](#) featured a report by UCLA researchers Dr. Michael Lu and Dr. Neal Halfon proposing that racial bias, not race, increases stress in African American women in the U.S. and compromises their health. Lu is an associate professor of obstetrics & gynecology and public health, and Halfon is director of the UCLA Center for Healthier Children, Families and Communities, and a professor of pediatrics, public health and public policy.

### **Neurosurgeon implants first visual prosthetic**

[Healio](#), [San Fernando Business Journal](#), [Optics.org](#) and [Mass Device](#) reported on the first blind patient implanted with a visual prosthetic system as part of a feasibility study. Dr. Nader Pouratian, vice chair of neurosurgery at the David Geffen School of Medicine at UCLA, performed the surgery at Ronald Reagan UCLA Medical Center and was featured.

### **How to treat endometriosis**

[Everyday Health](#) interviewed Dr. Leena Nathan on treatments for pain associated with endometriosis, a chronic condition with no cure. Nathan is an assistant clinical professor and obstetrician-gynecologist at UCLA Health-Westlake Village.

### **Doing good to diminish stress**

[HealthDay](#); [Newsmax](#); WTEN-TV, Albany, New York; and WXMI-TV, Grand Rapids, Michigan, were among nearly two dozen outlets featuring Emanuel Maidenberg, a psychologist and clinical professor of psychiatry at UCLA, in coverage about how doing good deeds may help people deal with stress resulting from disturbing news in the media.

### **New research could lead to cell therapies for ALS**

[ALS News Today](#), [SMA News Today](#) and [Tech Site](#) reported on stem cell research that identified the regulatory mechanisms behind motor neuron formation during embryonic development. The findings could help researchers grow motor neurons from stem cells in the lab to treat diseases like amyotrophic lateral sclerosis (ALS) and spinal muscular atrophy (SMA). The research was led by Bennett Novitch, the Ethel Scheibel Chair of Neuroscience, a professor of neurobiology at the David Geffen School of Medicine at UCLA and a member of the Eli and Edythe Broad Center of Regenerative Medicine and Stem Cell Research at UCLA.

### **More teamwork in science and funding needed to advance autism research**

[Spectrum](#) featured an opinion piece by Susan Bookheimer, a professor of cognitive neuroscience, about funding for translational research in autism, which translates basic findings in animal models into treatments for people.

### **Dangers of hot tea reveals complex cancer risk**

---

[Gizmodo](#) reported on how the tea habits of people who drink and smoke regularly might be raising their chances of developing esophageal cancer. Catherine Carpenter, an associate professor of clinical nutrition at UCLA and member of the UCLA Jonsson Comprehensive Cancer Center, was featured. [WSB Radio](#), [The Statesmen](#), [Palm Beach Post](#) and 26 other outlets picked up her Gizmodo comments.

### **The promise of immunotherapy in gastrointestinal cancers**

[OncLive](#) published a story and video on the future of immunotherapy to treat people with gastrointestinal tumors. Dr. Arun Singh, assistant professor of medicine and a UCLA Jonsson Comprehensive Cancer Center member, was featured.

### **Santa Monica nurse's art program draws further coverage**

KNX-AM honored Heather Dodge, a nurse at UCLA Medical Center, Santa Monica, as its "hero of the week" for establishing an art program to help patients deal with pain, boredom and isolation during their stays. [KPCC FM](#) and the [Santa Monica Mirror](#) previously highlighted Dodge's program.

### **Eating healthy food doesn't have to break the bank**

A [MEL Magazine](#) story on how to eat healthfully while on a budget featured Dana Hunnes, senior dietitian at Ronald Reagan UCLA Medical Center and an adjunct assistant professor at the UCLA Fielding School of Public Health.

### **Toddler meets blood donors who saved her life**

CBS' [Inside Edition](#) ran a video and digital story on a family's introduction to two dozen of the 71 people whose blood and platelet donations helped save their 2-year-old daughter's life during three bone-marrow transplants to treat two cancers. The video quoted Dr. Dawn Ward, medical director for the UCLA Blood & Platelet Center, which sponsored the event. The online story quoted the toddler's physician, Dr. Satiro De Oliveira, an assistant professor of pediatric hematology-oncology at UCLA Mattel Children's Hospital. The segment also appeared on Virginia's [10 News](#) and Ohio's [NBC4i](#).

### **How do we fight antibiotic resistance?**

Hamodia published a feature on antibiotic resistance in its February 7 issue that featured the expertise of Dr. Zachary Rubin, an associate clinical professor of infectious diseases at the David Geffen School of Medicine at UCLA and medical director of clinical epidemiology and infection prevention at Ronald Reagan UCLA Medical Center.

### **Do Ebola survivors have lifetime immunity?**

[Medical News Bulletin](#) featured a study led by Anne Rimoin, an associate professor of epidemiology at the UCLA Fielding School of Public Health, finding that survivors of the 1976 Ebola outbreak are still producing antibodies against the virus.

### **This week on "Ask the Doctors"**

UCLA Health internists Dr. Robert Ashley, Dr. Eve Glazier and Dr. Elizabeth Ko address health-related questions in the recurring "Ask the Doctors" column, syndicated by more than 50 outlets nationwide. A sampling of the stories from this past week's column:

- On angioplasty, featured in [Aberdeen News](#)
  - On the benefits of exercise for mental health, featured in [The Spokesman-Review](#)
  - On zinc and prostate enlargement, featured in [Tulsa World](#)
  - On how much water people should drink, featured in [Uexpress](#)
-

- On anal cancer, featured in [Herald Standard](#)
- On probiotics and neonatal sepsis, featured in [Hanford Sentinel](#).

---

## QUOTED

*“Fungus thrives in a moist environment. Someone infected may just walk barefoot and if they have fungus, they deposit fungal spores on the surface where you can get it.”*

-**Dr. Robert Lee**, chief of podiatric foot and ankle surgery at UCLA Medical Center, Santa Monica, in a [Men's Health](#) story on the dangers of walking barefoot.



[Share](#)



[Tweet](#)



[Share](#)

**Dr. Grace Aldrovandi**, a professor of pediatrics and chief of infectious diseases at UCLA Mattel Children’s Hospital, was quoted in a [New York Times](#) column about the importance of infants’ exposure to micro-organisms. The story referenced her team’s research.

**Dr. Deanna Attai**, a UCLA breast surgeon based in Burbank and assistant clinical professor of surgery, commented in a [Washington Post](#) article on how cancer treatments can raise the risk of heart disease. The article appeared in a dozen other publications and news sites including the [Tampa Bay Times](#), [Laredo Morning Times](#) and [The Worcester Telegram](#).

- Attai also commented in a [Medscape](#) article (subscription required but available for free) on whether doctors should tweet information during medical conventions.

**Dr. Medell Briggs-Malonson**, an assistant clinical professor and director of quality for emergency medicine quality, commented in an [Apartment Therapy](#) story on home safety tips and the health risks of smoke inhalation.

**Dr. Joshua Cohen**, an assistant professor and gynecologic oncologist at UCLA Health-

---

Westlake Village, commented in [VC Reporter](#) article on the HPV vaccine and its role in preventing HPV infections from becoming cancerous later in life.

**Dr. Gregg Fonarow**, the Eliot Corday Professor of Cardiovascular Medicine and Science at the David Geffen School of Medicine at UCLA and co-chief of cardiology, was quoted in a [HealthDay](#) article about a study finding that crash diets in obese people can cause temporary harm to the heart. The HealthDay story was syndicated by eight outlets including [U.S News and World Report](#), [UPI](#) and [WebMD](#).

**Dr. Tim Fong**, a clinical professor of psychiatry and director of the UCLA Addiction Psychiatry Fellowship, commented in a [CNET](#) article about the role of social networks in combatting addiction. A related interview aired on KCBS-AM, San Francisco. KCBS-AM: <http://bit.ly/2FYhHcx>

**Dr. Itzhak Fried**, a professor of neurosurgery at the David Geffen School of Medicine at UCLA, commented in a [Scientific American](#) story about new research on the use of deep brain electrical stimulation to boost memory.

**Dr. Wally Ghurabi**, medical director of the Nethercutt Emergency Center at UCLA Medical Center, Santa Monica, commented in a [WebMD](#) article on the flu epidemic.

**Dr. Mo Kang**, UCLA Dentistry's Jack Weichman Professor of Endodontics, commented in a [Healthline](#) story about the use of stem cell therapies for root canals.

**Dr. Peter Katona**, a clinical professor of medicine in the division of infectious diseases at the David Geffen School of Medicine at UCLA and adjunct professor of epidemiology at the UCLA Fielding School of Public Health, commented in a [CheatSheet.com](#) story about flu-preventing tricks that don't actually work.

**Leeka Kheifets**, an epidemiology professor-in-residence at the UCLA Fielding School of Public Health, was quoted in [The Associated Press](#) about two government-funded studies conducted in rats and mice that reported a weak link between cancer and cellphone radiation. The story was syndicated in more than 425 news outlets online.

**Gerald Kominski**, a professor of health policy and management at the UCLA Fielding School of Public Health and director of the Fielding School's UCLA Center for Health Policy Research, was quoted in various stories about health care access, costs and insurance:

- [KQED](#) and [California Political Review](#) quoted him in stories about a labor union's push for a ballot measure that would force Stanford Health Care facilities to lower costs or invest more money in health care.
- [MedPage Today](#) (subscription required but available for free) quoted him in a story about Amazon, Berkshire Hathaway and JPMorgan Chase's plan to form their own health insurance company for employees.
- [Capital Public Radio](#), [California Healthline](#) and KCRW quoted him in stories about the possibility of California adopting a state health insurance mandate. KCRW-FM: <http://goo.gl/25oNbf>

**Dr. Robert Lee**, chief of podiatric foot and ankle surgery at UCLA Medical Center, Santa Monica, commented in a [Men's Health](#) article on parasites and other dangers that can be

---

encountered by walking barefoot.

**Dr. John Mafi**, an assistant professor of medicine in the division of general internal medicine and health services research, commented in a [Modern Healthcare](#) story about high costs for low-value medical services and unneeded care.

**Erin Morse**, chief clinical dietitian at UCLA Health, commented in a [Prevention](#) story about heart-healthy gifts for Valentine's Day.

**Dr. Nader Pouratian**, vice chair of neurosurgery at the David Geffen School of Medicine at UCLA, commented in a [WebMD](#) story about the use of deep brain electrical stimulation to slow the progression of Alzheimer's disease.

**Steven P. Wallace**, a professor in the department of community health sciences at the UCLA Fielding School of Public Health and associate director of the UCLA Fielding School of Public Health Center for Health Policy Research, was quoted in a [WHYY.org](#) story and [NPR Marketplace](#) podcast about an undocumented immigrant making the choice between applying for Medicaid and risking deportation, or dying.

**Fred Zimmerman**, a professor of health policy and management at the UCLA Fielding School of Public Health, was quoted in a [HealthcareDIVE](#) article that discussed strategies for evaluating programs that aim to improve population health.

---

## BRIEFS

[NPR](#) referenced a UCLA Health partnership with an app targeted at combating screen addiction. The story was picked up by 102 NPR affiliates.

A [Huffington Post](#) op-ed on the toll HIV/AIDS takes on the black community referenced that UCLA first identified a cluster of symptoms that was later defined as AIDS. The story was picked up by [Yahoo! News](#).

[Vice: Broadly](#) cited a study, about gender nonconforming California teens, by the Fielding School's UCLA Center for Health Policy Research and the UCLA School of Law's Williams Institute in a story about teens becoming more comfortable with the identification.

CBS' The Doctors show discussed a UCLA study finding that drinking hot caffeinated tea was associated with a 74 percent reduction in glaucoma risk. The segment re-aired on more than 50 affiliate stations nationwide.

A [Huffington Post](#) story on conditions involving painful sex referenced UCLA Health's multidisciplinary approach to female sexual health. The story was picked up by [Yahoo! News](#).

[Santa Clarita Valley Signal](#) cited Dr. Alice Kuo in an article about a local conference held to

---

address the special challenges of 16- to 25-year-olds with autism spectrum disorder as they transition to college and work. Kuo, a professor and chief of UCLA Medicine-Pediatrics, was one of the speakers.

[Prince William Times](#) cited UCLA research on the health benefits of animal-assisted therapy in an article about walking dogs.

[Voice of San Diego](#) cited a UCLA study about breast cancer barriers in a story about state Senate Bill 945, which addresses time restrictions placed on low-income women who are being treated for breast and cervical cancer.

A [California Health Report](#) story cited diabetes data for Monterey County and the state from the 2015-2016 California Health Interview Survey, administered by the Fielding School's UCLA Center for Health Policy Research, in a story about a new pediatric diabetes center opening in Salinas.

[World Magazine](#) cited a study by the Fielding School's UCLA Center for Health Policy Research and the UCLA School of Law's Williams Institute about gender nonconforming teens in a story about books for youth featuring transgender characters.

---

## CONTENT CREATED BY MEDIA RELATIONS

[Autism, schizophrenia, bipolar disorders share molecular traits, study finds](#) UCLA Newsroom

[Talking to someone close about a touchy topic: weight gain](#) UCLA Health Connect blog

[UCLA Jonsson Comprehensive Cancer Center receives \\$700,000 gift](#) UCLA Newsroom

[Physician named to head UCLA National Clinician Scholars Program](#) UCLA Newsroom





This report features media placements from UCLA Health, which includes the David Geffen School of Medicine at UCLA, Ronald Reagan UCLA Medical Center, UCLA Medical Center, Santa Monica, UCLA Mattel Children's Hospital, the Stewart and Lynda Resnick Neuropsychiatric Hospital at UCLA, the UCLA Health Clinics and the UCLA Faculty Practice Group.

It also includes placements from the UCLA Fielding School of Public Health, the UCLA School of Nursing, the UCLA School of Dentistry, the UCLA Jonsson Comprehensive Cancer Center and the UCLA Eli and Edythe Broad Center of Regenerative Medicine and Stem Cell Research.

UCLA's Health Sciences Media Relations office e-publishes this report weekly. For more information, please contact Tami Dennis, executive director of media relations, or call the Media Relations office at (310) 267-7022. Media Relations also offers publicity for new research, medical breakthroughs, inspirational patient stories and more. To identify the appropriate public information officer for your department, visit

<https://www.uclahealth.org/Newsroom/Pages/Media-Relations-Directory.aspx>.