

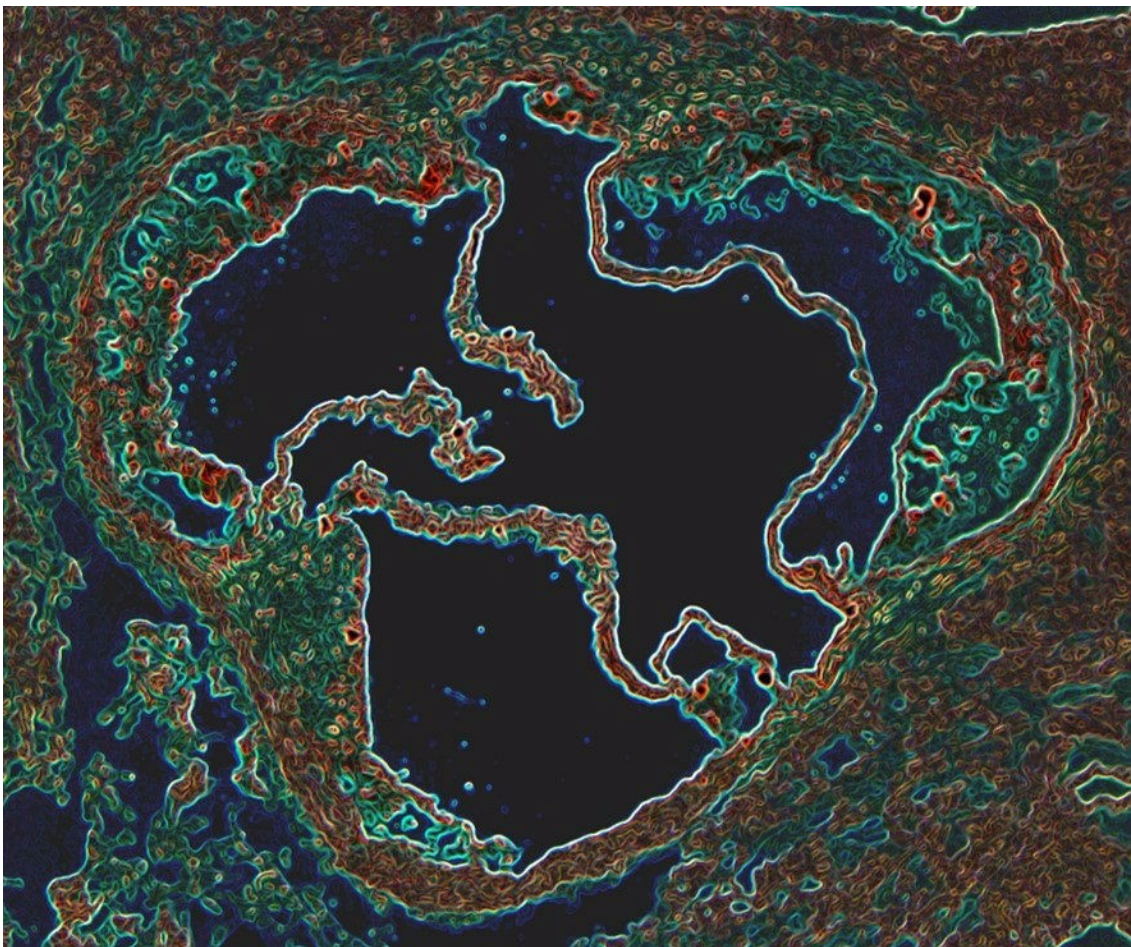
**UCLA**

**Health**

**UCLA HEALTH SCIENCES MEDIA REPORT**

**February 9-15, 2018**

**Note:** Website links may expire without notice. Some sites require password registration. If you cannot access a story or would like to obtain a copy, please call (310) 267-7022.



[Economic Times](#): "Selfish" gene may protect against heart disease by removing excess cholesterol

(Photo: UCLA Health)



**WCBS-AM:**

Helping children cope after a school shooting

(Photo: Courtney Carmody/Flickr)



**KCBS-TV:**

Seeking answers to cannabis questions

(Photo: Don Goofy/Flickr)



## FEATURED

### **New gene may protect against heart disease**

The discovery of a new gene that may play a protective role in preventing heart disease was reported by [Economic Times](#), [ScienMag](#), [Science Daily](#), [MedicalXpress](#), [Business Standard](#), [MyScience.org](#), [NewsMedical.net](#), [Asian News International](#), [The Health Site](#), [Health Medicine Network](#), [ALN Magazine](#), [Medical News Today](#) and [Science Newsline](#).

Called MeXis, the gene works within key cells inside clogged arteries to remove excess cholesterol from blood vessels. Senior author Dr. Peter Tontonoz, the Frances and Albert Piansky Professor of Pathology and Laboratory Medicine, and lead author Dr. Tamer Sallam, an assistant professor of medicine and co-director of the UCLA Center for Cholesterol Management, were quoted.

### **Helping children cope after a school shooting**

WCBS-AM (New York) and KCBS-AM (San Francisco) interviewed Melissa Brymer, the director of terrorism and disaster programs at the UCLA-Duke National Center for Child Traumatic Stress, about helping children cope after a school shooting.

### **The goal: Finding answers to questions about cannabis**

[KCBS-TV](#), [Merry Jane](#) and [FOX6Now](#) (in Milwaukee, Wisconsin) featured Dr. Timothy Fong, clinical professor of psychiatry and the faculty director of the Cannabis Research Initiative at UCLA's Semel Institute, in coverage of potential directions for cannabis research.

### **Neuroscientists discover shared molecular traits in serious mental illnesses**

[CNN](#), [Gizmodo](#) and [Newsweek](#) reported on research by Dr. Daniel Geschwind, a professor of neurology and psychiatry and the Gordon and Virginia MacDonald Distinguished Chair in Human Genetics, and Dr. Michael Gandal, an assistant professor of psychiatry at UCLA's Semel Institute. Published in *Science*, their study described overlapping patterns of genetic activity across five major psychiatric diseases. The story was also reported by [Xinhua](#), [KXLY.com](#), [Seeker](#), [Big Think](#), [Spectator](#) and [Economic Times](#).

### **Could OCD treatment one day begin with a brain scan?**

[UPI](#) and [Medical Xpress](#) covered research by Dr. Jamie Feusner, a professor of psychiatry at UCLA's Semel Institute, and Nicco Reggente, a psychology doctoral student, on the use of brain scans and a form of artificial intelligence to predict which people with obsessive-compulsive disorder would benefit from cognitive behavioral therapy.

### **Improving HPV vaccine rates among Latino teens**

[California Health Report](#) described a new study by Roshan Bastani, a professor of health policy and management at the UCLA Fielding School of Public Health, that will investigate methods to increase the number of Latino teenagers vaccinated against human papillomavirus.

### **Same-sex spouses more likely to use behavioral health services**

[Healio](#) featured research by Linda Diem Tran, a graduate student researcher at the UCLA Fielding Center for Health Policy Research, finding that same-sex marriage partners use behavioral service health services at a higher rate than different-gender partners.

### **UCLA launches first mobile platelet drive**

The UCLA Blood & Platelet Center's first mobile drive to collect platelets from community donors was covered in a front-page story by the [Santa Clarita Signal](#). The event was organized by a Ronald Reagan UCLA Medical Center patient who required near weekly transfusions of blood and platelets to treat multiple myeloma, a cancer that attacks the blood.

### **Environmental epidemiologist explores Parkinson's risks**

The [Tomorrow Edition](#) blog published an interview with Beate Ritz, professor of

---

epidemiology and environmental health sciences at the UCLA Fielding School of Public Health. She addressed the gene-environmental interactions that may lead to Parkinson's disease.

### **Study compares stroke death rates related to blood thinners**

[Medscape Medical News](#) reported on a study of patients who suffered a stroke caused by bleeding on the brain. In the study, those who took one of the new types of blood thinners, such as Eliquis, had lower mortality rates than those who took a warfarin-type blood thinner. Lead author Dr. Gregg Fonarow, the Eliot Corday Professor of Cardiovascular Medicine and Science and co-chief of cardiology, was quoted.

### **How to support your sweetheart this Valentine's Day**

The [Brownsville Herald](#) (Texas) featured advice from Dr. Karol Watson, a professor of medicine/cardiology, about how to show support for a loved one who has Type 2 diabetes and heart disease. She suggested accompanying a loved one to doctor's appointments to ask questions and take notes. Watson is co-director of the UCLA Program in Preventive Cardiology and director of the UCLA Barbra Streisand Women's Heart Health Program.

### **This week on "Ask the Doctors"**

UCLA Health internists Dr. Robert Ashley, Dr. Eve Glazier and Dr. Elizabeth Ko address health-related questions in the recurring "Ask the Doctors" column, syndicated by more than 50 outlets nationwide. A sampling of the stories from this past week's column:

- On grandparents' influence on children's health, featured in the [Hanford \(California\) Sentinel](#)
- On the link between teen depression and social media, featured in Spokane, Washington's [The Spokesman-Review](#)
- On erosive arthritis, featured in the [Tulsa \(Oklahoma\) World](#)
- On dementia diagnoses, featured in Oklahoma City, Oklahoma's [The Oklahoman](#)
- On surgery and time of day, featured in Uniontown, Pennsylvania's [Herald-Standard](#)
- On rapid heartbeat in the morning, featured in Conroe, Texas' [The Courier](#)
- On milk banks for new mothers, featured in Taylorville Indiana's [Breeze Courier](#)

---

## **QUOTED**

*"Chest pressure is usually somewhere in the mix, but it may not be the most prominent symptom."*

-Dr. Karol Watson, on heart attack symptoms in women, in [Consumer Reports](#)

---



Share



Tweet



Share

**Jo-Ann Eastwood**, an associate professor at the UCLA School of Nursing, commented in an [ADVANCE for Nurses](#) article about nurses' prominent role in the prevention of cardiovascular disease.

**Dr. Wally Ghurabi**, medical director of the Nethercutt Emergency Center at UCLA Medical Center, Santa Monica, commented in a [Los Angeles Times](#) article about the slowing of flu cases in the Los Angeles area.

**Dr. Karol Watson**, a professor of medicine/cardiology, commented in a [Consumer Reports](#) article about why the risk of heart attack rises in the winter and about heart attack symptoms in women. Watson is co-director of the UCLA Program in Preventive Cardiology and director of the UCLA Barbra Streisand Women's Heart Health Program.

**Dr. Otto Yang**, professor of medicine/infectious diseases, was quoted in an [Associated Press](#) story about research into the use of gene therapy to fight AIDS.

---

## CONTENT CREATED BY MEDIA RELATIONS

[For one early adopter, CAR T therapy means 18 months cancer-free and counting](#) UCLA Newsroom

[Brain scan and artificial intelligence could help predict whether OCD will improve with treatment](#) UCLA Newsroom

[Newly discovered gene may protect against heart disease](#) UCLA Newsroom

[UCLA scientists receive \\$7.7 million grant to study HIV recurrence](#) UCLA Newsroom

[Public health dentists offer recommendations to better integrate oral health and primary care](#) UCLA Newsroom

[Mapping HIV in sub-Saharan Africa reveals patterns](#) UCLA Health Connect blog

[Stem cell discovery may help conquer pediatric germ cell tumors](#) UCLA Health Connect blog

---



---

This report features media placements from UCLA Health, which includes the David Geffen School of Medicine at UCLA, Ronald Reagan UCLA Medical Center, UCLA Medical Center, Santa Monica, UCLA Mattel Children's Hospital, the Stewart and Lynda Resnick Neuropsychiatric Hospital at UCLA, the UCLA Health Clinics and the UCLA Faculty Practice Group.

It also includes placements from the UCLA Fielding School of Public Health, the UCLA School of Nursing, the UCLA School of Dentistry, the UCLA Jonsson Comprehensive Cancer Center and the UCLA Eli and Edythe Broad Center of Regenerative Medicine and Stem Cell Research.

UCLA's Health Sciences Media Relations office e-publishes this report weekly. For more information, please contact Tami Dennis, executive director of media relations, or call the Media Relations office at (310) 267-7022. Media Relations also offers publicity for new research, medical breakthroughs, inspirational patient stories and more. To identify the appropriate public information officer for your department, visit <https://www.uclahealth.org/Newsroom/Pages/Media-Relations-Directory.aspx>.