

UCLA

Health

UCLA HEALTH SCIENCES MEDIA REPORT

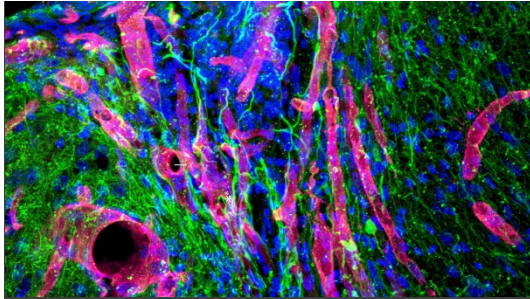
May 18 - 24, 2018

Note: Website links may expire without notice. Some sites require password registration. If you cannot access a story or would like to obtain a copy, please call (310) 267-7022.



[New York Times](#): NY Times profiles pioneer in cancer immunotherapy

(Photo: JCCC/Milo Mitchell)



[Int'l Business Times:](#)

Biomaterial regrows brain tissue after stroke in mice

(Photo: UCLA Health)



[La Opinion:](#) La Opinion

follows student's journey from Dreamer to doctor

(Photo: UCLA Health/Elaine Schmidt)



FEATURED

The New York Times profiles pioneer in cancer immunotherapy

[The New York Times](#) included a profile of Dr. Antoni Ribas, a professor of medicine, surgery, and molecular and medical pharmacology at UCLA, and the director of UCLA's Jonsson Comprehensive Cancer Center Tumor Immunology Program, in a special section on visionaries in medicine and science.

La Opinion follows student's journey from Dreamer to doctor

A profile in [La Opinion](#) chronicled the journey of UCLA medical student Joe Torres, who illegally crossed the Mexican border as a child and worked to become an American citizen, father and future physician dedicated to providing a voice for the undocumented. Torres will graduate next month with an M.D. from the David Geffen School of Medicine at UCLA and a master's in public policy from the UCLA Luskin School of Public Policy. Dr. Gerardo Moreno, executive director of the UCLA PRIME program, described how Torres' experiences fueled his desire to take a leadership role in helping the medically underserved.

UCLA-developed biomaterial regrows brain tissue after stroke in mice

[International Business Times](#), [New Atlas](#), [Express.co.uk](#), [IFL Science](#), [Medical News Today](#), [MyNewsLA.com](#), [Quo](#), [Futurity.org](#), [Science Daily](#), KNX-AM, KTTV-TV, [Physics World](#), [Medical Xpress](#), [MyScience.org](#), [Science Newsline](#), [ReliaWire](#), [Genetic Engineering](#)

[Biotechnology News](#), [Neuroscience News](#) and 16 other publications covered research on a new stroke-healing gel created by UCLA researchers that helped regrow neurons and blood vessels in mice whose brains had been damaged by strokes. Coverage quoted study author Dr. S. Thomas Carmichael, a professor and chair of the department of neurology at the David Geffen School of Medicine at UCLA and co-director of the UCLA Broad Stem Cell Research Center.

Media interest in Chatterbaby app grows

WPVI-TV, Philadelphia, Pennsylvania; KNXV-TV, Phoenix, Arizona; KSTU-TV, Salt Lake City, Utah; WABG-TV, Greenville, Mississippi; [thebump.com](#), [Inside Edition](#), [MedicalXpress](#), [myscience.org](#), [Health Management Technology](#), [Medgadget.com](#), [thesiliconreview.com](#), [healthnewsdigest.com](#), [newatlas.com](#), [geneticliteracyproject.org](#) and [Engineering360](#) published stories on Chatterbaby, an app that uses artificial intelligence to tell parents why their baby is crying. Ariana Anderson, assistant professor in residence of psychiatry and biobehavioral sciences at the UCLA Semel Institute for Neuroscience and Human Behavior, commented in the news.

Race is a factor in suicide risk among children

[CBS News](#) interviewed Jeanne Miranda, a professor of psychiatry, for a story about a new study finding that the suicide rate among black children is two times higher than that of white children. The story was syndicated on [MSN.com](#) and [WCBI.com](#).

CBS News seeks brain researcher's reaction to new military helmet

David Hovda, professor of neurosurgery and director of the department's UCLA Brain Injury Research Center, was interviewed in a [CBS This Morning](#) segment about how the U.S. military is adapting football helmets to protect soldiers from traumatic brain injuries due to head blows during combat and training. He expressed skepticism that a helmet would prevent the brain from striking the inside of the skull after a battlefield explosion. The segment re-aired on 226 affiliate stations nationwide.

New algorithm more accurately predicts life expectancy after heart failure

[Healthcare Business](#), [Clinical Innovations.com](#), [RDMag](#), [Scicasts.com](#), [Technology.org](#), [Healthcare Analytics News](#), [News Medical.net](#), [Health News Digest](#), [MedIndia](#) and [Medical Xpress](#) reported on a new algorithm developed by UCLA researchers that more accurately predicts which people will survive heart failure, and for how long, whether or not they receive a heart transplant. The study was published in PLOS One and led by the UCLA Samueli School of Engineering. The study's co-author Dr. Martin Cadeiras, an assistant clinical professor of cardiology, was quoted. [Newsweek](#), [IFL Science](#) and [Cardiovascular Business](#) also covered the research.

Breaking down cannabidiol and its medicinal uses

[KPCC's AirTalk](#) aired a segment about the potential medicinal use of cannabidiol, a non-intoxicating component of marijuana, featuring Dr. Shaun Hussain, director of UCLA's Pediatric Spasms Program.

New model predicts lifetime risk of developing Alzheimer's disease dementia

Several media outlets featured a new study led by Ron Brookmeyer, a professor of biostatistics at the UCLA Fielding School of Public Health, reporting that a person's risk of developing Alzheimer's disease dementia in his or her lifetime varies greatly depending on the person's age, gender and disease state. [Drug Target Review](#), [MD Magazine](#), [Medical Express](#), [MedPage Today](#), [News Medical Life Sciences](#), [Patient Daily](#), [Science Codex](#),

Scicasts and [Sierra Sun Times](#) all covered the study.

Location is key when stimulating brain to induce memory

[Science News](#) reported on new research, presented at the Cognitive Neuroscience Society, by Nanthia Suthana, an assistant professor of neurosurgery at the David Geffen School of Medicine at UCLA. Her research found that – when stimulating a person’s brain in an effort to improve his or her ability to make and recall a memory – the precise location of stimulation is critical.

No such thing as a normal voice, science reports

[Geek.com](#) explored a new study by Jody Kreiman, co-director of the UCLA Voice Perception Laboratory and a professor of head and neck surgery at the David Geffen School of Medicine at UCLA, that debunks the idea of a “normal voice.” Her findings emphasize that the dynamic interaction between the speaker, the signal, the context and the listener all influence how we perceive vocal quality.

- Kreiman also commented in the U.K’s [Digital Spy](#) about an online audio clip that went viral on social media by asking listeners to vote whether they heard the word “Laurel” or “Yanny.” The story was syndicated by [Yahoo! News U.K.](#)

U.S. News highlights International Medical Graduate program

A [U.S. News & World Report](#) article on the ways that doctors from other countries can help alleviate the country’s growing physician shortage featured the UCLA International Medical Graduate (IMG) program, which helps legal U.S. residents who have graduated from Latin American medical schools earn their California medical licenses. Dr. Michelle Bholat, executive director of the program and executive vice chair of family medicine, commented.

Why and how doctors make treatment decisions

[Targeted Oncology](#) featured two case studies with Dr. Zev Wainberg, a professor in medicine and hematology/oncology and a member of the Jonsson Comprehensive Cancer Center. Wainberg explained his treatment decisions for each case and why he pursued more aggressive treatments.

Using hormonally targeted therapies to treat breast cancer

[OncLive](#) featured Dr. Dennis Slamon and Dr. Sara Hurvitz, both members of the Jonsson Comprehensive Cancer Center, in an article about new frontline treatment options for patients with hormone receptor-positive breast cancer.

Kindergartners create special quilt for Operation Mend

KCAL-TV covered a presentation by local kindergartners who created a quilt of valor and presented it to the UCLA Health Operation Mend program, which provides health services to wounded veterans. Eric Matsumura, a patient navigator for Operation Mend, was interviewed.

The ACA left behind one low-income group: Latinos, report finds

[California Health Report](#) featured research from the Fielding School’s UCLA Center for Health Policy that reports the Affordable Care Act failed to benefit low-income Latinos as much as other low-income racial and ethnic groups.

California children are getting more calories from sports and energy drinks

[Public Now](#) featured research by Joelle Wolstein and Susan Babey, research scientists at

the Fielding School's UCLA Center for Health Policy Research, that reports children and teenagers in California are drinking more sugar-filled sports and energy drinks, which pose the same health risks as soda.

Depression Grand Challenge garners additional coverage

[Thrive Global](#) covered UCLA's campus-wide initiative, the Depression Grand Challenge, which aims to radically transform how depression is treated, starting with voluntary screening of UCLA's own students. Dr. Elizabeth Gong-Guy, executive director of UCLA's Campus and Student Resilience and associate clinical professor of psychology, commented in the news.

Exploring the health impacts of smoking marijuana

The [American Journal of Managed Care](#) reported on a presentation by Dr. Donald P. Tashkin, a professor of pulmonary and critical care, at the American Thoracic Society 2018 International Conference. Tashkin explored the health effects of smoking marijuana as it gains legal status in the U.S.

Screening at UCLA highlights award-winning film about depression

[Hollywood Reporter](#) published a story about *Heaven Is a Traffic Jam on the 405*, a documentary film that explores severe depression and anxiety and was screened at an event hosted by the Semel Institute at UCLA. Vicky Goodman, founder and president of the Friends of the Semel Institute, introduced the film. Dr. Michael Gitlin, a professor of clinical psychiatry at the David Geffen School of Medicine at UCLA and the director of the UCLA Mood Disorders Clinic, spoke on a panel about the film. Each was featured in the coverage.

Which type of lettuce is most healthy?

[MEL Magazine](#) interviewed Dana Hunnes, a senior dietitian at Ronald Reagan UCLA Medical Center and an adjunct assistant professor at the UCLA Fielding School of Public Health, for a story ranking different types of lettuce based on the quality of their nutrients.

Social ties may reduce HIV infection among black men who have sex with men

[HealthNewsDigest](#) highlighted research suggesting that receiving support from friends and acquaintances can help prevent black men who have sex with men from becoming infected with HIV. Steven Shoptaw, a professor of family medicine at the David Geffen School of Medicine at UCLA and of psychiatry at the Semel Institute, was the study's senior author.

Adverse events fall in hospitals after routine contact precautions are removed

[Healio](#) covered new UCLA research finding that one year after discontinuing routine contact precautions in hospitals, there was a significant reduction in noninfectious adverse events among hospitalized patients. Dr. Elise Martin, an assistant clinical professor of medicine in the division of infectious diseases and an author of the study, was referenced.

Treating interstitial lung disease in systemic sclerosis

[Healio](#) covered findings presented by Dr. Elizabeth Volkman at the 2018 Congress of Clinical Rheumatology related to the treatment of interstitial lung disease in systemic sclerosis using stem cell transplant and medication. Volkman is an assistant professor of medicine in the division of rheumatology.

New guidelines may boost reliability, accuracy of melanoma diagnoses

[MDedge's Dermatology News](#), [HealthNewsDigest](#) and [MyScience.org](#) covered new UCLA research updating guidelines for classifying invasive melanoma. Dr. Joann Elmore, a professor of medicine in the division of general internal medicine and health services research and director of the UCLA National Clinician Scholars Program, was the study's first author.

What to know about children and hydration

[The Telegram & Gazette](#) of Worcester, Massachusetts, published an article co-authored by Dr. Tanya Altmann, an assistant clinical professor of pediatrics at UCLA Mattel Children's Hospital, about proper hydration for children. The article originally ran in the [Washington Post](#).

Microbiome in patients with scleroderma has unique characteristics

[MDedge's Dermatology News](#) published a story and video interview with Dr. Elizabeth Volkmann at the 2018 Congress of Clinical Rheumatology about findings related to scleroderma patients and microbiome composition. Volkmann is an assistant professor of medicine in the division of rheumatology.

This week in 'Ask the Doctors'

UCLA Health internists and assistant professors of medicine Dr. Robert Ashley, Dr. Eve Glazier and Dr. Elizabeth Ko address health-related questions in the recurring "Ask the Doctors" column, syndicated by more than 50 outlets nationwide. A sampling of stories from this past week's column:

- On physical activity for the family, in Oklahoma City's [The Oklahoman](#)
- On hyperthyroidism leading to osteoporosis, in Maryland's [The Cumberland Times-News](#)
- On naloxone, in California's [Hanford Sentinel](#)
- On thyroid production, in [UExpress](#)
- On the clear connection between exercise and well-being, in Washington's [The Spokesman-Review](#).

QUOTED

"What bothers me is I walk around Santa Monica every day and I've never seen any of the scooter riders with a helmet. They seem to think they're invincible."

– Dr. Wally Ghurabi, in the [Los Angeles Times](#).



Amander Clark, a professor and chair of the department of molecular, cell and developmental biology and a member of the UCLA Eli and Edythe Broad Center of Regenerative Medicine and Stem Cell Research, was quoted in a report from [CBS affiliate WISC](#) on increasing rates of infertility worldwide.

Dr. Daniel Cole, a professor of clinical anesthesiology, was quoted in a [Washington Post](#) print story about postoperative cognitive dysfunction. The story was picked up by the [Chicago Tribune](#), the [Orlando Sentinel](#) and [El Nuevo Herald](#); it originally ran in [Kaiser Health News](#).

Dr. William Cunningham, a professor of health policy and management at the UCLA Fielding School of Public Health and a faculty associate at the Fielding School's UCLA Center for Health Policy Research, commented in a [BlackDoctor.org](#) story about the perception of clinical trials and medical research among black Americans.

Dr. Daniel Dumesic, a professor of obstetrics/gynecology and chief of reproductive endocrinology and infertility, was quoted in [Women's Health](#) on how women with polycystic ovary syndrome can lose weight.

Dr. Gregg Fonarow, the Eliot Corday Professor of Cardiovascular Medicine and Science and co-chief of cardiology, was quoted in [MD Magazine](#), [tctMD](#) and [Medscape Medical News](#) on a review of the 2017 revised hypertension guidelines that found them to be beneficial.

- Fonarow also was quoted in [Medscape](#) about a study that found substantially different death rates for ischemic heart disease and chronic heart failure across the Veteran Affairs healthcare system.

Dr. Timothy Fong, a clinical professor of psychiatry and director of the UCLA Addiction Psychiatry Fellowship, was quoted in a [Parents](#) story about new research on kids' use of marijuana.

Dr. Patricia Ganz, a distinguished professor of health policy and management at the UCLA Fielding School of Public Health, was quoted in a [Richmond Times-Dispatch](#) article about what life is like after surviving breast cancer. The article is the final installment in a series that chronicled the experiences of a woman from Richmond as she underwent treatment for breast cancer.

Dr. Wally Ghurabi, medical director of the Nethercutt Emergency Center at UCLA Medical Center, Santa Monica was featured in a [Los Angeles Times](#) article about scooter injuries and how to avoid them. Ghurabi gave safety tips, and noted that the Emergency Department has recently treated several injured riders.

Sander Greenland, professor emeritus of epidemiology at the UCLA Fielding School of Public Health, was quoted in a [Newsweek](#) opinion piece about a proposal to require any research used as a basis for policy decisions to be replicable.

Dr. Jason Hinman, a professor in residence of neurology at the David Geffen School of Medicine at UCLA, commented in the [Los Angeles Times](#) about preventing recurrent strokes. The story was syndicated in the [Baltimore Sun](#) and the [Orlando Sentinel](#).

Nicole Hoff, adjunct assistant professor of epidemiology and country director and senior administrative analyst for the UCLA-DRC Health Research and Training Program, was quoted in [The Atlantic](#) about the current Ebola outbreak in the Democratic Republic of Congo.

William J. McCarthy, adjunct professor of health policy and management at the UCLA Fielding School of Public Health, was quoted in [Hoy](#) about a new initiative from the World Health Organization that calls for a global ban on artificial trans fats.

Cyrus Sinai of the UCLA-DRC Health Research and Training Program at the UCLA Fielding School of Public Health was quoted by [The Atlantic](#) in an article about how mapping efforts are helping to track the spread of Ebola in the Democratic Republic of Congo.

Dr. Michael Lee, associate professor of medicine, commented in a [Cardiology Today's Intervention](#) article on the evolving use of atherectomy – a minimally invasive endovascular surgery technique for removing atherosclerosis from blood vessels – in patients being treated for peripheral artery disease or coronary artery disease.

Dr. Larissa Mooney, a professor of psychiatry at UCLA's Semel Institute and director of the UCLA Addiction Medicine Clinic, was quoted in [Allure](#) story what patients should consider before taking antidepressants.

Steven P. Wallace, a professor of community health sciences at the UCLA Fielding School of Public Health and associate director of the Fielding School's UCLA Center for Health Policy Research, was quoted in [Governing Magazine](#) about an undocumented immigrant mother who risked deportation so she could receive cancer care.

Dr. Karol Watson, co-director of the UCLA Program in Preventive Cardiology and director of the UCLA Barbra Streisand Women's Heart Health Program, commented in [Medical Daily](#) about a study finding that eating one egg every day could reduce heart disease risk.

- Watson also commented in [Reuters Health](#) about obstetricians and gynecologists being in a position to help identify and reduce cardiovascular disease risk in women, especially since many women see their ob-gyn on a regular basis.

BRIEFS

The “Dr. Oz Show” cited Dr. Reza Jarrahy, an associate clinical professor of surgery, in a segment about a woman who underwent reconstructive surgeries at UCLA after botched facial injections by a non-UCLA physician. The show was syndicated on more than 150 local affiliates.

[Men’s Health](#), in a story about muscle growth, referenced a UCLA study finding that a diet rich in fatty oils from certain fish can reduce brain plaque associated with Alzheimer’s.

[Healthline](#), in a story about the harms of sugar in the diet, referenced a UCLA study finding that a high-fructose diet sabotages learning and memory.

[SheKnows](#), in a story about postpartum incontinence, referenced supplemental information from the UCLA Health website.

[Santa Monica Daily Press](#) noted that UCLA Medical Center, Santa Monica, was a sponsor in an annual wine auction that raised funds for local public schools.

[The San Diego Union Tribune](#) published a quote from The Scripps Research Institute describing how Scripps sent donations to the Fielding School’s UCLA-DRC Health Research and Training Program for its current Ebola work in the Democratic Republic of Congo.

[FOX Business](#) cited a health policy brief from the Fielding School’s UCLA Center for Health Policy Research showing that over 70 percent of health expenditures in California are paid for with public funds.

A [San Francisco Patch](#) op-ed by San Mateo County Supervisor David Canepa cited the Elder Index, developed by the Insight Center for Community Economic Development and the Fielding School’s UCLA Center for Health Policy Research. The op-ed was about how federal poverty level measures hurt the aging middle class.

[Medical Daily](#), in a story about the risks of leaving hypothyroidism untreated, cited information from the UCLA Health website on goiter. The story was syndicated on [MSN.com](#).

CONTENT CREATED BY MEDIA RELATIONS



[UCLA Newsroom](#): App helps hearing-impaired parents know when and why their baby is crying

(Image: Ky le FLood/Wikimedia Commons)



[Post](#)



[Tweet](#)



[Post](#)

[Study predicts most people with earliest Alzheimer's signs won't develop dementia associated with the disease](#) UCLA Newsroom

[Biomaterial developed at UCLA helps regrow brain tissue after stroke in mice](#) UCLA Newsroom

[New guidelines may slightly increase reliability, accuracy of melanoma diagnoses](#) UCLA Newsroom

[Nursing school dean receives lifetime achievement award](#) UCLA Newsroom



This report features media placements about UCLA Health, which includes the David Geffen School of Medicine at UCLA, Ronald Reagan UCLA Medical Center, UCLA Medical Center, Santa Monica, UCLA Mattel Children's Hospital, the Stewart and Lynda Resnick Neuropsychiatric Hospital at UCLA, the UCLA Health Clinics and the UCLA Faculty Practice Group.

It also includes placements about the UCLA Fielding School of Public Health, the UCLA School of Nursing, the UCLA School of Dentistry, the UCLA Jonsson Comprehensive Cancer Center and the UCLA Eli and Edythe Broad Center of Regenerative Medicine and Stem Cell Research.

UCLA's Health Sciences Media Relations office e-publishes this report weekly. For more information, please contact Tami Dennis, executive director of media relations, or call the Media Relations office at (310) 267-7022. Media Relations also offers publicity for new research, medical breakthroughs, inspirational patient stories and more. To identify the appropriate public information officer for your department, visit <https://www.uclahealth.org/Newsroom/Pages/Media-Relations-Directory.aspx>.