



Health

UCLA HEALTH SCIENCES MEDIA REPORT

May 25 - 31, 2018

Note: Website links may expire without notice. Some sites require password registration. If you cannot access a story or would like to obtain a copy, please call (310) 267-7022.

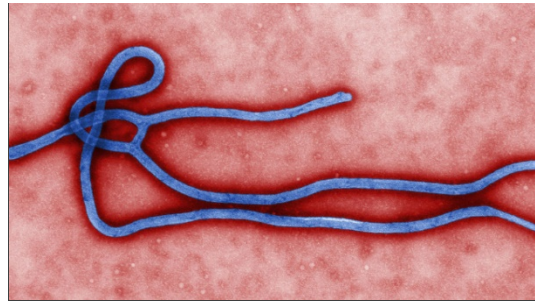
[NBC Nightly News](#): UCLA offers innovative approach to fighting depression on campus

(Photo: UCLA/Sean Brenner)



[KABC-TV](#): CPR Palooza will train community on life-saving technique

(Photo: UCLA Health/Amy Albin)



[Science](#): UCLA researchers conduct Ebola vaccine trial in DRC

(Photo: CDC/Wikimedia Commons)



FEATURED

UCLA offers innovative approach to fighting depression on campus

[NBC Nightly News](#) aired a feature story about the UCLA Depression Grand Challenge, focusing on an innovative online mental health screening and treatment program for UCLA students. The segment featured an interview with Dr. Nelson Freimer, director of the Depression Grand Challenge and director of the Center for Neurobehavioral Genetics at the Semel Institute for Neuroscience and Human Behavior at UCLA. The story also aired on 37 local NBC affiliates across the country, including WMAQ-TV, Chicago, Illinois; WESH-TV, Sacramento, California; and KCRA-TV, Sacramento, California.

CPR Palooza will train community on life-saving technique

[KABC-TV](#) featured a story on the upcoming CPR Palooza event at the UCLA Health Training Center on June 2. The event will provide free training to the public on CPR awareness. The story featured a UCLA patient whose life was saved thanks to CPR. Dr. Ali Nsair, an assistant professor of cardiology, was interviewed. The [Santa Monica Mirror](#) and the [Easy Reader](#) also promoted the event.

UCLA researchers conduct Ebola vaccine trial in DRC

[Science](#) featured UCLA research in the Democratic Republic of Congo that is being led by Anne Rimoin, an associate professor of epidemiology at the UCLA Fielding School of Public Health. Rimoin and colleagues are collecting blood samples from volunteers

participating in the Ebola vaccine trial in order to better understand responses to the vaccine. MedicalBrief.co.za picked up the story.

Gut bacteria play critical role in anti-seizure effects of ketogenic diet

[LiveScience](#), [FierceBiotech](#), [New Atlas](#), [ScienceDaily](#), [Tech Times](#), [Genetic Engineering & Biotechnology News](#), [BioTecNika](#), [Slash Gear](#), [Chemical & Engineering News](#), [Laboratory Equipment](#), [Scienmag](#) and [MyScience.org](#) covered a UCLA study identifying specific gut bacteria that play an essential role in the anti-seizure effects of the high-fat, low-carbohydrate ketogenic diet. Elaine Hsiao, an assistant professor of medicine, is the study's senior author.

Students fare worse in overheated classrooms

[BBC News](#), [Chalkbeat](#) and [CTV News Channel](#) covered a new study co-authored by R. Jisung Park, an assistant professor of environmental health sciences at the UCLA Fielding School of Public Health, that reported that after a hot year of school, high school students performed worse on the PSAT.

Expert places 'concussion test' into context

[JAMA News](#) featured Dr. Christopher Giza, director of the UCLA Steve Tisch BrainSPORT Program, in a story about a blood test that detects a biomarker linked to mild traumatic brain injury.

Avoiding norovirus on vacation

A [Healthline](#) article on five ways to avoid contracting norovirus during your summer vacation featured Dr. Jeffrey Klausner, a professor of medicine in the division of infectious diseases at the David Geffen School of Medicine at UCLA and a professor of public health at the UCLA Fielding School of Public Health.

Choosing to study anesthesiology

[U.S. News & World Report](#) published a story about top anesthesiology programs and why a student should choose anesthesiology as a specialty, featuring expertise from Dr. Karen Sibert, an associate clinical professor of anesthesiology and perioperative medicine.

OncLive highlights UCLA physicians' expertise in ovarian cancer

OncLive published multiple videos and articles in which various UCLA experts were interviewed about advancements in the treatment of patients with ovarian cancer:

- [Dr. Joshua Cohen](#) discussed the evolution of surgery in the treatment of ovarian cancer. Cohen is an assistant professor and gynecologic oncologist at UCLA Health-Westlake Village and a member of the UCLA Jonsson Comprehensive Cancer Center.
 - [Dr. Gottfried Konecny](#) discussed the use of PARP inhibitors. Konecny is an associate professor of medicine in the division of hematology/oncology at the David Geffen School of Medicine at UCLA and a member of the UCLA Jonsson Comprehensive Cancer Center.
 - [Dr. Deborah Krakow](#) discussed genetic testing in ovarian cancer. Krakow is a professor and chair of the department of obstetrics and gynecology, a professor of orthopaedic surgery and a professor of human genetics.
 - [Dr. Kelly McCann](#) discussed combination trials of PARP inhibitors. McCann is a faculty member in the breast cancer research group at UCLA.
-

- [Dr. Sanaz Memarzadeh](#) discussed p53 reactivation. Memarzadeh is a professor in the department of obstetrics and gynecology at the David Geffen School of Medicine at UCLA, director of the G.O. Discovery Laboratory at UCLA and a member of both the UCLA Jonsson Comprehensive Cancer Center and the UCLA Broad Stem Cell Research Center.
- [Dr. Dennis Slamon](#) discussed the use and dosing of PARP inhibitors. Slamon is a professor, chief and executive vice chair for research in the department of hematology and oncology at the David Geffen School of Medicine at UCLA and director of the UCLA Jonsson Comprehensive Cancer Center Clinical and Translational Research.

Kids' seasonal allergy symptoms can be mistaken for learning disabilities

[Healthline](#) published a story about seasonal allergy symptoms in children and how such symptoms can be mistaken for learning disabilities. Dr. Maria Garcia-Lloret, an associate professor of pediatrics in the allergy and immunology division at UCLA Mattel Children's Hospital, was featured.

When morning sickness is deadly

[Folks Magazine](#) featured a Q&A with Marlena Fejzo, an associate researcher at the David Geffen School of Medicine at UCLA, about her research into the cause of hyperemesis gravidarum, a condition characterized by extreme nausea and vomiting during pregnancy. Fejzo recently discovered two genes associated with the condition. Her research was also highlighted by [Medical News Bulletin](#).

New guidelines may boost reliability, accuracy of melanoma diagnoses

[Reuters Health](#) covered new UCLA research updating guidelines for classifying invasive melanoma. Dr. Joann Elmore, a professor of medicine in the division of general internal medicine and health services research and director of the UCLA National Clinician Scholars Program, was the study's first author and was quoted.

Do we treat pets better than people at the end of life?

[Aeon](#) featured an essay by Dr. Joseph Pierre, a clinical professor of psychiatry and biobehavioral sciences at UCLA, examining the different approaches to end-of-life care taken by veterinarians and medical doctors. The essay also appeared in [Medpage Today](#).

Study compares accuracy in eye-imaging methods

[EyeWorld Magazine](#) published a cover story on a UCLA Stein Eye Institute study finding varying degrees of accuracy among imaging options to identify optic nerve swelling. Lead author Dr. Stacy Pineles, the Jerome and Joan Snyder Chair in Ophthalmology, was quoted.

The ethical considerations of court-mandated substance abuse treatment

[Psychiatry Advisor](#) featured David Farabee, a professor-in-residence of psychiatry and biobehavioral sciences, in an article about controversies surrounding court-mandated substance abuse treatment.

Women with limited power over decisions could benefit from PrEP

[MedicalBrief.co.za](#) covered a new study co-authored by Pamina Gorbach, a professor of epidemiology at the UCLA Fielding School of Public Health, finding that pregnant women in South Africa may be willing to use pre-exposure prophylaxis (PrEP) to protect themselves and their babies from HIV.

Continued media coverage of Chatterbaby app

[DigitalTrends.com](#), [CBC Radio](#), [Parents.com](#), [La Opinion](#), [Digital Trends Español](#), [Yahoo! News](#) and more than 60 broadcast outlets including Scripps The Now, [CBS New York](#), [Fox8Live.com](#), KPCC-FM and [KCTV5.com](#) covered Chatterbaby, an app that allows parents to know when and why their baby is crying. Ariana Anderson, an assistant professor-in-residence of psychiatry and biobehavioral sciences, commented in the news. Scripps The Now: <https://goo.gl/Cw9Zkc>
KPCC-FM: <http://bit.ly/2J1gHua>

Interest continues in UCLA-developed biomaterial that regrows brain tissue in mice

[Express.co.uk](#), [Good News Network](#) and [BioTecNika](#) wrote about a bioengineered gel created by UCLA researchers that helped regrow neurons and blood vessels in mice whose brains were damaged by strokes. The articles quoted study author Dr. S. Thomas Carmichael, a professor and chair of the department of neurology at the David Geffen School of Medicine at UCLA and co-director of the UCLA Broad Stem Cell Research Center.

New tool predicts the lifetime risk of dementia associated with Alzheimer's

[HealthDay](#) and [Healio](#) covered a new UCLA study led by Ron Brookmeyer, a professor of biostatistics at the UCLA Fielding School of Public Health, reporting on a new mathematical model that can be used to determine a person's risk of developing dementia associated with Alzheimer's disease. The HealthDay article was picked up by [U.S. News & World Report](#), [WebMD](#), [Doctors Lounge](#), [Drugs.com](#), [Health.com](#), [Healing Well](#) and [UPI](#).

Great Recession spiked America's blood pressure

An [NBC News](#) article on how to stop stressing over money so that it isn't harmful to your health highlighted research led by Teresa Seeman, a professor of medicine in the division of geriatrics at the David Geffen School of Medicine at UCLA and a professor of epidemiology at the UCLA Fielding School of Public Health. Her research found that the Great Recession of 2008-2010 was associated with higher cardiovascular risk factors, including increased blood pressure and glucose levels.

An unexpected benefit of cataract surgery

[EyeWorld Magazine](#) reported on a UCLA Stein Eye Institute study linking cataract surgery to longevity in women. Co-authors Dr. Anne Coleman, the Fran and Ray Stark Foundation Professor of Ophthalmology and a professor of epidemiology at the UCLA Fielding School of Public Health, and Dr. Victoria Tseng, a resident physician in ophthalmology, were quoted.

This week in 'Ask the Doctors'

UCLA Health internists and assistant professors of medicine Dr. Robert Ashley, Dr. Eve Glazier and Dr. Elizabeth Ko address health-related questions in the recurring "Ask the Doctors" column, syndicated by more than 50 outlets nationwide. A sampling of stories from this past week's column:

- On burning mouth, in Vermont's [Bennington Banner](#)
 - On the hygiene of hot air hand dryers, in Oklahoma's [Tulsa World](#)
 - On liver enzymes and fatty liver disease, in [The Oklahoman](#)
 - On tapeworm infections, in Washington's [The Spokesman-Review](#)
 - On Parkinson's diagnosis, in [UExpress](#)
-

- On erythromelalgia, in California's [Hanford Sentinel](#).

QUOTED

"Due to emotional factors, if blood pressure rises due to stress while in the clinic, it's probably rising throughout the day as well."

– Dr. Boris Arbit, in a [HealthCentral](#) story on masked hypertension.



[Share](#)



[Tweet](#)



[Share](#)

Dr. Boris Arbit, a clinical instructor of cardiology, commented in a [HealthCentral](#) article about the risks of masked hypertension and how people can accurately monitor their blood pressure.

Melissa Brymer, the director of terrorism and disaster programs at the UCLA-Duke National Center for Child-Traumatic Stress, commented in an [NBC News](#) article about summer break giving parents and students a temporary respite from anxiety over school shootings.

Dr. Gregg Fonarow, the Eliot Corday Professor of Cardiovascular Medicine and Science and co-chief of cardiology, was quoted in a [HealthDay](#) story on a Finnish study that found a possible association between high-protein diets, especially from animal sources, and adverse effects on heart health in men. The story was syndicated in 10 outlets, including [U.S. News & World Report](#), [WebMD](#), [UPI](#) and [Health.com](#).

- Fonarow also commented in a [DailyMeal.com](#) article on a study finding that feelings of loneliness or isolation could contribute to a poor prognosis in patients with heart failure.
- Fonarow was also cited in a [Reuters Health](#) article about more adults being treated for hypertension under the new recommended guidelines.

Dr. Barbara Giesser, a professor of clinical neurology at the David Geffen School of Medicine at UCLA and clinical director of the UCLA MS program, commented in a [Healthline](#) article about a new drug to treat multiple sclerosis in children.

Dana Hunnes, a senior dietitian at the Ronald Reagan UCLA Medical Center and an

adjunct assistant professor at the UCLA Fielding School of Public Health, commented in a story about soda taxes. The story was published in the Spring Healthy Living section in GateHouse Media newspapers across the country.

Dr. Marco Iacoboni, director of the Neuromodulation Lab at UCLA's Ahmanson-Lovelace Brain Mapping Center, was quoted in a [Popular Science](#) article about the synchronous movements of NBA players and how they're indicative of mental bonds between the athletes and a potential predictor of a winning team.

Baljit Khakh, a professor of physiology and neurobiology, commented in an [Evaluation Engineering](#) article about how astrocytes function in diseases such as Huntington's.

Dr. Jeffrey Klausner, a professor of medicine in the division of infectious diseases and a professor of public health in the UCLA Fielding School of Public Health, was quoted in a [Milwaukee Community Journal](#) article about California's record-breaking rates of sexually transmitted diseases.

Dr. Adrienne Youdim, a voluntary associate clinical professor of medicine in the division of general internal medicine and health services research, was quoted in a [Reader's Digest](#) story about the ketogenic diet.

BRIEFS

[Reuters](#), in a story about workplace harassment, cited a 2017 study by the WORLD Policy Analysis Center at the UCLA Fielding School of Public Health reporting that 235 million women in more than a third of the world's countries are not covered by workplace sexual harassment laws.

[The New Yorker](#), in a story about the way doctors diagnose patients, mentioned findings from the surgical oncology department at UCLA related to the use of Adriamycin in patients with sarcoma.

[Prevention](#), in a story about promoting gut health, referenced a UCLA study on probiotics in yogurt and their impact on gut bacteria.

[Inc.](#), in a list of TEDx Talks that teach ways to enhance your ability to focus despite a distracting environment, includes a talk by Diana Winston, director of mindfulness education.

A [Huffington Post](#) column mentioned a UCLA Center for Health Policy research survey finding that nearly one-third of caregivers in California reported emotional stress so severe it disrupted their lives. The column was picked up by [Huffington Post India](#), [Huffington Post South Africa](#), [MSN.com](#) and [Yahoo Singapore News](#).

[Times Record](#) of Ft. Smith, Arkansas, published a story about Cpl. Aaron Mankin's speech

at a Memorial Day ceremony that mentioned UCLA Health Operation Mend, a program that offers health services to wounded veterans. Mankin was the first patient to be treated by the program when it started 10 years ago.

[Inquisitr](#), in an article about First Lady Melania Trump's public absence following her kidney procedure, cited the medical expertise of Dr. Mark Litwin, chair of urology at the David Geffen School of Medicine at UCLA and a member of the UCLA Jonsson Comprehensive Cancer Center.

[Care2](#), in a story about cholesterol and health, cited a UCLA study linking cholesterol to cancer. The work was led by Dr. Peter Tontonoz, a professor of pathology and a Howard Hughes Medical Institute researcher.

An [Inland Empire Community News](#) story about a family living with Polycystic Kidney Disease mentioned the assistance of Dr. Anjay Rastogi, a professor of medicine and clinical chief of nephrology. It also cited the annual Kidney Health Fair organized by Rastogi and his team.

[Santa Monica Daily Press](#) noted that UCLA Medical Center, Santa Monica, was a sponsor of an annual wine auction that raised funds for local public schools.

CONTENT CREATED BY MEDIA RELATIONS



[UCLA Newsroom](#): Despite risk of breast cancer, few men undergo genetic tests, study finds

(Photo: UCLA Health/Enrique Rivero)



[UCLA Health ranks as among best places to work in two separate listings](#) UCLA Health Newsroom

[Ronald Reagan UCLA Medical Center earns 'Get With The Guidelines-Heart Failure Gold Plus Quality Achievement Award'](#) UCLA Health Newsroom

[Kindergarten class supports wounded veterans with homemade 'quilt of valor'](#) UCLA Health Connect blog

[UCLA celebrates 3 medical graduates who overcame extraordinary odds to be called 'doctor'](#) UCLA Newsroom

[Melanoma researcher selected as NextGen Star by cancer research association](#) UCLA Newsroom



This report features media placements about UCLA Health, which includes the David Geffen School of Medicine at UCLA, Ronald Reagan UCLA Medical Center, UCLA Medical Center, Santa Monica, UCLA Mattel Children's Hospital, the Stewart and Lynda Resnick Neuropsychiatric Hospital at UCLA, the UCLA Health Clinics and the UCLA Faculty Practice Group.

It also includes placements about the UCLA Fielding School of Public Health, the UCLA School of Nursing, the UCLA School of Dentistry, the UCLA Jonsson Comprehensive

Cancer Center and the UCLA Eli and Edythe Broad Center of Regenerative Medicine and Stem Cell Research.

UCLA's Health Sciences Media Relations office e-publishes this report weekly. For more information, please contact Tami Dennis, executive director of media relations, or call the Media Relations office at (310) 267-7022. Media Relations also offers publicity for new research, medical breakthroughs, inspirational patient stories and more. To identify the appropriate public information officer for your department, visit

<https://www.uclahealth.org/Newsroom/Pages/Media-Relations-Directory.aspx>.