



Health

UCLA HEALTH SCIENCES MEDIA REPORT July 13 - 19, 2018

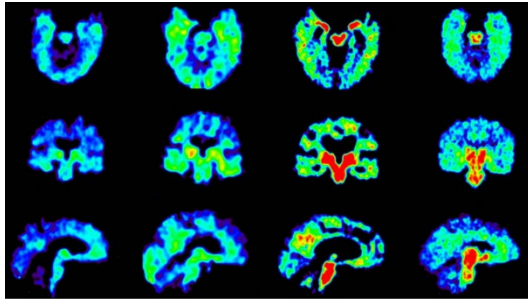
Note: Website links may expire without notice. Some sites require password registration. If you cannot access a story or would like to obtain a copy, please call (310) 267-7022.



[Telemundo](#): Former Dreamer becomes Dr. Torres

(Photo: Alex Escalante)





[NPR](#): Hunting for similar brain changes in soldiers, retired football players

(Photo: UCLA)



[Getting Curious](#): The lasting harm of separating children from their parents

(Photo: UCLA Health)



Post



Tweet



Post



Post



Tweet



Post

FEATURED

Telemundo, MSN shadow former Dreamer as he becomes Dr. Torres

[Telemundo Network](#) and [MSN](#) aired a segment on Dr. Joe Torres, a former Dreamer who graduated in June from the PRIME program at the David Geffen School of Medicine at UCLA with a dual degree in medicine and public policy. His mother and father watched the ceremony from Mexico and were interviewed via FaceTime. Now married, a U.S. citizen and the father of two young boys, Torres, 34, began his residency in internal medicine at Olive View–UCLA Medical Center on July 1 and will use his personal experience and expertise in health care and policy to advocate for immigrants and underserved communities.

Scientists hunt for similar brain changes in soldiers, retired football players

[National Public Radio](#), [UPI](#) and 200 other outlets featured brain research led by Dr. Gary Small, a professor of psychiatry and biobehavioral sciences at the David Geffen School of Medicine at UCLA. His team looked at the brain scans of seven military personnel and found changes similar to those seen in the brains of retired football players suspected to have chronic traumatic encephalopathy.

The lasting harm of separating children from their families

[Getting Curious](#), the No. 1 podcast [on iTunes](#), aired [an episode](#) interviewing Dr. Elizabeth Barnert about the lasting health consequences of family separation. “Queer Eye” star Jonathan Van Ness hosts the podcast to hundreds of thousands of listeners. A video that Van Ness shared about the episode received more than 40,000 views on [his Twitter](#) account and nearly 300,000 views on [his Instagram](#) account. Barnert is an assistant professor of pediatrics at UCLA Mattel Children’s Hospital.

Researching the effectiveness of an experimental Ebola vaccine

[Science](#) described the work of Anne Rimoin, an associate professor of epidemiology at the UCLA Fielding School of Public Health, in an article about the experimental Ebola vaccine that was administered during the most recent Ebola outbreak in the Democratic Republic of Congo. Her team will compare the blood immune responses of about 1,000 vaccinated people to those of unvaccinated people to learn whether the vaccine triggered a protective response.

How heat affects your brain

[The Washington Post](#) and [NPR](#) featured research by R. Jisung Park, a professor of environmental health sciences at the UCLA Fielding School of Public Health, in stories about the effect of heat on testing and cognitive performance.

UCLA leads the nation in organ transplants

The [Los Angeles Business Journal](#) and [Becker's Hospital Review](#) reported on statistics from the Organ Procurement and Transplantation Network showing that UCLA performed the most solid organ transplants of any center in the country during 2017 and the first half of 2018.

Gaining insight into how the brain links memories

[Scientific American](#) published an article by Alcino Silva, a professor of neurobiology, psychiatry and psychology at UCLA's David Geffen School of Medicine and College, about how one memory attaches to another.

The life of an ER nurse

[Huffington Post](#) interviewed Sarah Jividen, a nurse in the emergency department at Ronald Reagan UCLA Medical Center, in a story about her life, her work and how she got into nursing.

How to stop breast cancer from spreading to the brain

[KABC-TV](#) in Los Angeles and CBS affiliates in Traverse City, Michigan; Anchorage, Alaska; and Juneau, Alaska, aired an Ivanhoe News report on a clinical trial of a new drug that could help stop the spread of breast cancer. Dr. Sarah Hurvitz, an associate professor in hematology/oncology and medical director of the UCLA Jonsson Comprehensive Cancer Center, was interviewed. To date, 14 stations nationwide have aired the story.

Channel 4 covers pediatric cancer research fellowship

KNBC-TV in Los Angeles reported on a summer fellowship grant provided by St. Baldrick's Foundation to Julius Weng, a UCLA medical student conducting research under the guidance of Dr. Theodore Moore, chief of pediatric hematology/oncology and director of the pediatric blood and marrow transplantation program at UCLA Mattel Children's Hospital. Moore is also a member of the UCLA Jonsson Comprehensive Cancer Center and of the UCLA Eli & Edythe Broad Center of Regenerative Medicine & Stem Cell Research.

Juvenile incarceration creates gaps in medical care

[Undark](#) featured the expertise of Dr. Elizabeth Barnert, an assistant professor of pediatrics at UCLA Mattel Children's Hospital, in a story about health-care gaps in the juvenile detention system.

Which salt is the healthiest?

[MEL Magazine](#) published a story ranking different types of salt based on their health benefit according to the expertise of Dana Hunnes, a senior dietitian at Ronald Reagan UCLA Medical Center and an adjunct assistant professor at the UCLA Fielding School of Public Health.

Labeling sexual compulsiveness a mental health disorder

[Everyday Health](#) featured Rory Reid, an assistant professor of psychiatry at UCLA's Semel Institute, and Dr. Timothy Fong, a clinical professor of psychiatry and director of the UCLA Addiction Psychiatry Fellowship, in an article about the World Health Organization's recent classification of compulsive sexual behavior as a mental health disorder. Fong was quoted in a similar article in [The Fix](#).

How does a migraine makes you lose your sight?

[HuffPost](#) featured Dr. Andrew Charles, a professor of neurology and director of the Goldberg Migraine Program at UCLA, in an article about ocular migraines, which disrupt vision.

Loneliness can be deadly

[AARP](#) featured Steve Cole, director of the UCLA Social Genomics Core Laboratory and a professor of medicine and psychiatry at the David Geffen School of Medicine at UCLA, in an article about how chronic loneliness and inflammation are linked, and create long-term health risks.

LABJ spotlights \$1 million gift to Stein Eye Institute

A \$1 million donation by Joan and Jerome Snyder to the UCLA Stein Eye Institute was reported by the [Los Angeles Business Journal](#). The gift will endow a new chair in the ophthalmology department of the David Geffen School of Medicine at UCLA. The family previously funded two other endowed chairs in residency training and corneal diseases.

Toddler throws flowers in her bone marrow donor's wedding

The [Ventura County Star](#), [PEOPLE](#), [Fox News](#), [New York Post](#), [LifeZette](#), [Tech Times](#) and [Dothan Eagle](#) covered the story of Skye Savren-McCormick, who underwent three grueling bone-marrow transplants to treat her cancer at Mattel UCLA Children's Hospital. Now 3, the Ventura toddler was invited to serve as the flower girl in her bone-marrow donor's wedding in Alabama this summer. Nine FOX affiliates also reported the story.

California paper features Duchenne researcher

The [Daily Democrat News](#) profiled researcher Rachelle Crosbie-Watson and her laboratory's innovative approach to finding a cure for Duchenne muscular dystrophy. Crosbie-Watson is the chair of integrative biology and physiology at the UCLA College and a professor of neurology at the David Geffen School of Medicine at UCLA.

Exploring a new approach to brain disorder

[Healio](#) covered UCLA research demonstrating the safety and effectiveness of inserting coils and gel foam through blood vessels to treat patients with hepatic encephalopathy, a buildup of toxins in the brain caused by advanced liver disease. Lead author Dr. Edward Lee, an associate professor of radiological sciences and surgery at the David Geffen School of Medicine at UCLA, was quoted. Lee is a member of the UCLA Jonsson Comprehensive Cancer Center.

Getting doctors to make better decisions

[Becker's Hospital Review](#) highlighted a recent [Harvard Business Review](#) article by Dr. Yusuke Tsugawa and Dr. John Mafi about how clinical decision-making may be too complex to be consistently improved through financial incentives and behavioral nudges. Long-lasting improvement may also require changes in organizational culture. Tsugawa and Mafi are both assistant professors of medicine in the division of general internal medicine and health services research.

Explaining the rise in liver disease deaths

KNX-AM featured Dr. Sammy Saab, a professor of medicine and surgery and head of outcomes research in hepatology, in a report on new Centers for Disease Control and Prevention statistics finding that liver cancer death rates increased 43 percent in U.S. adults from 2000 to 2016.

- Saab also commented in a [Reuters](#) story on a British Medical Journal study finding significant increases in deaths related to cirrhosis and liver cancer over the same period. Nearly two dozen outlets carried the Reuters article, including [Yahoo! Finance UK](#), the websites of [92.5-FM](#), Sioux Falls, South Dakota; [93.9-FM](#), Hibbing, Minnesota; and [100.7-FM](#), Terre Haute, Indiana.

Outpatient total knee arthroplasty is riskier than inpatient procedure

[Healio: Orthopedics Today](#) reported on research by Dr. Armin Arshi, a resident physician in orthopaedic surgery, finding that outpatient total knee arthroplasty carried a slightly higher risk for perioperative surgical complications than inpatient procedures. The findings were presented at the annual meeting of the American Academy of Orthopaedic Surgeons.

Preclinical Alzheimer's won't always lead to Alzheimer's dementia

[Open Minds](#) featured a study by Ron Brookmeyer, a professor of biostatistics at the UCLA Fielding School of Public Health, reporting that most people diagnosed with preclinical Alzheimer's disease will not develop Alzheimer's disease dementia.

More men seeking plastic surgery

[News Medical.net](#), [Health News Digest](#) and [Medicine News Line](#) featured tips for men who are seeking plastic surgery or minimally invasive cosmetic procedures. Dr. Jason Roostaeian, an associate clinical professor of plastic and reconstructive surgery at UCLA Health, was quoted.

Parent's tough childhood casts shadow across generations

[TheJournal.ie](#) and KVHP-TV, Lake Charles, Louisiana, reported on a Pediatrics study finding that severe childhood trauma and stresses early in parents' lives are linked to higher rates of behavioral health problems in their children. The study was led by Dr. Adam Schickedanz, a health services researcher and assistant professor of pediatrics at UCLA Mattel Children's Hospital.

What you need to know about varicose veins

[News-Medical.net](#), [Medicine News Line](#) and [Medical Newser](#) published stories about varicose veins and interventional treatments featuring the expertise of Dr. Cheryl Hoffman, an associate professor of radiological sciences at the David Geffen School of Medicine at UCLA.

Speed-editing genes to accelerate cancer treatment

A Nature study by Dr. Antoni Ribas, a professor of medicine and director of the tumor

immunology program at the UCLA Jonsson Comprehensive Cancer Center, about a new technique to quickly generate personalized cells and potentially increase the number of people who can benefit from immunotherapies, was reported by [Lab Online](#), [Endpoints News](#), [Fars News Agency](#), [Science and Technology Report](#), [HealthCanal](#), [Science Tech Updates](#) and [Scicasts](#).

How combination therapies can outsmart ovarian cancer

Dr. Gottfried Konecny, an associate professor of medicine and a member of the UCLA Jonsson Comprehensive Cancer Center, appeared on [OncLive](#) discussing how different combination therapies paired with PARP inhibitors could potentially outsmart ovarian cancer.

Gene controls equilibrium of bone and fat in bone marrow

[ScienceDaily](#), [The Medical News](#), [myScience.org](#), [HealthNewsDigest.com](#), [Medical Xpress](#) and [HealthCanal.com](#) featured research from the UCLA School of Dentistry's Dr. Cun-Yu Wang, chair of oral biology and medicine, and Dr. Bo Yu, assistant professor of restorative dentistry. Their research showed that a gene known to control human metabolism also controls bone marrow's equilibrium of bone and fat, suggesting a possible drug target for the treatment of osteoporosis and skeletal aging. Wang is a member of the UCLA Jonsson Comprehensive Cancer Center.

This week in 'Ask the Doctors'

UCLA Health internists Dr. Robert Ashley, Dr. Eve Glazier and Dr. Elizabeth Ko address health-related questions in the recurring "Ask the Doctors" column, syndicated by more than 50 outlets nationwide. Glazier is an associate professor of medicine, and Ashley and Ko are assistant professors of medicine. A sampling of stories from this past week's column:

- On chronic wasting disease, in Washington's [The Spokesman-Review](#)
- On umbilical hernias, in Oklahoma's [The Oklahoman](#)
- On RFID-blocking products and noise-canceling headphones, in Oklahoma's [Tulsa World](#)
- On acid reflux and food elimination, in [UExpress](#)
- On cannabinoids and CBD, in Pennsylvania's [The Times-Tribune](#)
- On fear of side effects from medication, in California's [Hanford Sentinel](#).

QUOTED

"A barbecue is a good place to think about heat exposure in a holistic sense because it's a really great venue to get heat stroke and get sick. You have to be careful"

because you're outside, you're likely to be in the sun, and probably will be eating and drinking things that you're not used to, including alcohol. All of those things are setups for heat exposure illnesses along the spectrum."

-Dr. Mark Morocco in [Healthline](#)



Dr. Richard Finn, assistant professor in hematology/oncology, director of the UCLA Liver Cancer Center and a member of UCLA Jonsson Comprehensive Cancer Center, commented in [Healio](#) about a new therapy that provides clinical benefit to patients with liver cancer.

Dr. Patricia Ganz, director of cancer prevention and control research at UCLA Jonsson Comprehensive Cancer Center and a professor of health policy and management at UCLA Fielding School of Public Health, was quoted in [The Wall Street Journal](#) about how many breast cancer patients don't receive recommended follow-up care.

Dr. Barbara Giesser, a professor of neurology at UCLA and clinical director of the UCLA MS program, commented in [Healthline](#) about how multiple sclerosis symptoms can impair job performance.

Dr. Peyman Golshani, the John Mazziotta Endowed Chair in Neurology at UCLA, commented in [Spectrum](#) about a study showing that seizures may damage learning capacity in rodent brains.

David Hayes-Bautista, director of the Center for the Study of Latino Health and Culture, was quoted in a [Washington Informer](#) article examining low Latino voter turnout.

Dana Hunnes, a senior dietitian at Ronald Reagan UCLA Medical Center and an adjunct assistant professor at the UCLA Fielding School of Public Health, was quoted in [SELF.com](#) about the effects of eating sushi while pregnant.

Dr. Jeffrey Klausner, a professor of medicine in the division of infectious diseases at the David Geffen School of Medicine at UCLA and an adjunct professor of epidemiology at the UCLA Fielding School of Public Health, was quoted by [STAT](#) about how researchers are working to create tailored treatments to combat antibiotic-resistant gonorrhea. [Scientific American](#) carried the article.

- He was also quoted in a [Reader's Digest](#) article called "14 Facts About STDs That Could Save Your Life."
-

Gerald Kominski, a professor of health policy and management at the UCLA Fielding School of Public Health and Senior Fellow at the Fielding School's UCLA Center for Health Policy Research, was quoted by [Kaiser Health News](#) about the potential effect of courts striking down the ACA's preexisting condition protections. The story was also published in [The Washington Post](#), [Billings Gazette](#), [California Healthline](#), [Post-Star](#), [The Register-Guard](#), [The Times and Democrat](#), [Herald and Review](#), [Muskogee Daily Phoenix](#), [Santa Maria Times](#), [Health Leaders](#) and [Corvallis Gazette-Times](#).

Dr. Deborah Krakow, chair of obstetrics/gynecology at the David Geffen School of Medicine at UCLA and an orthopaedic surgeon at the UCLA Orthopaedic Center in Santa Monica, commented in [onclive.com](#) about patient populations who should undergo genetic testing for ovarian cancer.

Dr. Zhaoping Li, director at the UCLA Center for Human Nutrition, commented in a [Reuters](#) story about new research suggesting that omega-3 supplements don't lower risk for heart disease. The report was syndicated by 21 outlets, including [Business Insider](#), [Yahoo! News](#) and [RadioUSA.com](#).

Dr. Walter Ling, a professor of psychiatry and founding director of the Integrated Substance Abuse Programs at UCLA, commented in [Health24](#) about whether behaviors like gaming can become addictions.

Emanuel Maidenberg, a clinical professor of psychiatry at UCLA, commented in the [Salt Lake Tribune](#) about lingering mental health impacts on the growing number of Americans who have survived mass shooting events.

Dr. Emeran Mayer, director of the G. Oppenheimer Center for Neurobiology of Stress and Resilience and co-director of the CURE: Digestive Diseases Research Center, was quoted in [Today's Dietitian](#) about plant-based diets and the gut biome. The story quoted a speech Mayer gave at the Nutrition & Health Conference in May.

Dr. Mark Morocco, an emergency room physician at Ronald Reagan UCLA Medical Center and a clinical professor of emergency medicine at the David Geffen School of Medicine at UCLA, commented in a [Healthline](#) story about safety and health tips when attending an outdoor party during the summer.

Dr. Rashmi Mullur, an assistant clinical professor of medicine in the division of endocrinology, diabetes and metabolism, commented in [Healthline](#) about research suggesting that platypus venom contains a hormone that helps the pancreas produce insulin and thus could be useful in treating diabetes.

Dr. Christopher Pietras, director of UCLA Heath's palliative care program and a member of the UCLA Jonsson Comprehensive Cancer Center, commented in an [onclive.com](#) article on pain management in patients with ovarian cancer.

Yifang Zhu, a professor of environmental health sciences at the UCLA Fielding School of Public Health, was quoted in a [Healthline](#) article about how wildfire smoke, pollution and heat can create dangerous air conditions during the summer.

BRIEFS

[Cosmopolitan](#), in a story about reasons a woman may not have a period, cited data from the UCLA Health website about prolactinomas. The story was picked up by [Yahoo! Style](#).

[Cincinnati Enquirer](#), in a story about the death of Sam DuBose, cited a study by the David Geffen School of Medicine at UCLA finding that black Americans are killed more often by police than are white Americans.

[FierceBiotech](#) cited research by Scott Kitchen, an associate professor of medicine in the division of hematology oncology, on gene therapy to make cells that can detect and destroy HIV-infected cells. Kitchen is a member of the UCLA Jonsson Comprehensive Cancer Center.

A piece from the [San Diego Union-Tribune](#)'s "Healthy Aging" column cited the Elder Index, developed by the UCLA Center for Health Policy Research at the UCLA Fielding School of Public Health. The Elder Index is a measure of poverty that incorporates national and state data sources.

CONTENT CREATED BY MEDIA RELATIONS



[UCLA Newsroom](#): [Leading the nation in 2017 organ transplants](#)

(Photo: UCLA Health)



[Share](#)



[Tweet](#)



[Share](#)

[Military personnel show brain changes similar to those in retired football players suspected to have CTE](#) UCLA Newsroom

[To ease the transition to a plant-based diet, try these foods](#) UCLA Health Connect blog

[5 tips for men seeking plastic surgery](#) UCLA Health Connect blog



This report features media placements about UCLA Health, which includes the David Geffen School of Medicine at UCLA, Ronald Reagan UCLA Medical Center, UCLA Medical Center, Santa Monica, UCLA Mattel Children's Hospital, the Stewart and Lynda Resnick Neuropsychiatric Hospital at UCLA, the UCLA Health Clinics and the UCLA Faculty Practice Group.

It also includes placements about the UCLA Fielding School of Public Health, the UCLA School of Nursing, the UCLA School of Dentistry, the UCLA Jonsson Comprehensive Cancer Center and the UCLA Eli and Edythe Broad Center of Regenerative Medicine and Stem Cell Research.

UCLA's Health Sciences Media Relations office e-publishes this report weekly. For more information, please contact Tami Dennis, executive director of media relations, or call the Media Relations office at (310) 267-7022. Media Relations also offers publicity for new research, medical breakthroughs, inspirational patient stories and more. To identify the appropriate public information officer for your department, visit

<https://www.uclahealth.org/Newsroom/Pages/Media-Relations-Directory.aspx>.