



Health

UCLA HEALTH SCIENCES MEDIA REPORT For the week of Sept. 8 - 14, 2017

Note: Website links may expire without notice. Some sites require password registration. If you cannot access a story or would like to obtain a copy, please call (310) 267-7022.



[Los Angeles Daily News](#): Superhero window washers bring smiles to pediatric patients

(Photo: Reed Hutchinson/UCLA)



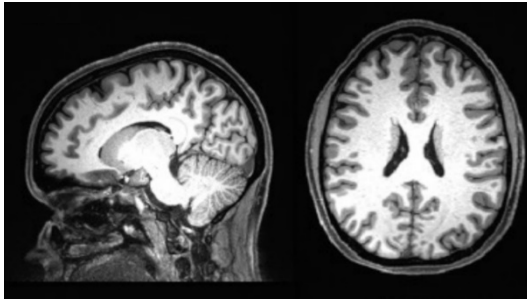
Post



Tweet



Post



Discover: October issue of magazine features aging brain study

(Photo: UCLA)



HealthDay: How college women can protect their health

(Photo: Getty Images/iStock)



Post



Tweet



Post



Post



Tweet



Post

Superhero window washers bring smiles to pediatric patients

[Los Angeles Daily News](#), KNBC-TV, KABC-TV and KTTV-TV's SkyFox Live Helicopter covered the UCLA Mattel Children's Hospital's fifth annual Superhero Day, in which a team of window washers in costume as Batman, Wonder Woman, Spider-Man, Captain America and The Hulk scaled the hospital and made a visit to pediatric patients. The KABC coverage was syndicated by KDFX-TV, Palm Springs, California; WZZM-TV, Grand Rapids, Michigan; WKOW-TV, Madison, Wisconsin; KIII-TV, Corpus Christi, Texas; KXXV-TV, Waco, Texas; and KTBS-TV, Shreveport, Louisiana.

KNBC-TV: <http://bit.ly/2h7kf0P>

KABC-TV: <http://bit.ly/2wsAAzu>

KTTV-TV: <http://bit.ly/2x38cpq>

KDFX-TV: <http://bit.ly/2wsXoyJ>

WZZM-TV: <http://bit.ly/2h5jBkA>

WKOW-TV: <http://bit.ly/2h5or1i>

KIII-TV: <http://bit.ly/2wd8Nrl>

KXXV-TV: <http://bit.ly/2y9my7V>

KTBS-TV: <http://bit.ly/2wclQom>

Discover magazine features aging brain study

The October issue of [Discover](#) (subscription required) features Dr. Susan Bookheimer, director of the Staglin/One Mind Institute Center for Cognitive Neuroscience at UCLA, and Taylor Kuhn, a postdoctoral research fellow, in a story about a writer taking part in the Human Connectome Project Aging study. Bookheimer is principal investigator of the study's UCLA site.

How college women can protect their health

[HealthDay](#) featured tips from Dr. Aparna Sridhar, an assistant professor of obstetrics and gynecology, on what college women can do to protect their gynecologic health. The HealthDay story was syndicated in 51 outlets, including [Philly.com](#), [Napa Valley Register](#),

[Tucson.com](#) and [La Prensa](#).

Operation Mend heals the wounds of war

Fox 11's [Good Day L.A.](#) featured a story on Operation Mend, a program at UCLA Health that provides free medical, surgical and psychological services to post 9/11 wounded veterans. The story included Operation Mend's Buddy Family program, which pairs the veteran with a local volunteer while the patient is in Los Angeles getting treatment. Dr. Chris Crisera, associate professor of plastic and reconstructive surgery and co-director of Operation Mend, and Dr. Jo Sornborger, director of psychological health programs, were interviewed.

New recommendations for cervical cancer screenings

[Associated Press](#), [HealthDay News](#), [Medscape](#) and [Newsmax](#) covered new U.S. Preventive Services Task Force recommendations about cervical cancer screening that featured Dr. Carol Mangione, chief of the UCLA Division of General Internal Medicine and Health Services Research. Mangione, who is also a professor of health policy and management at the UCLA Fielding School of Public Health, is a task force member. The AP story ran in more than 200 outlets, the HealthDay article was carried by nine outlets and the Newsmax article was syndicated by three online publications.

Stemming the tide of AIDS deaths in the U.S.

A [HuffPost](#) article about the thousands of AIDS-related deaths each year in the United States featured Dr. Jeffrey Klausner, who commented on ways to stop more AIDS diagnoses and deaths. Five outlets carried the article, including MSN.com and WOW. Klausner is a professor of medicine in the division of infectious diseases at the David Geffen School of Medicine at UCLA and of public health at the UCLA Fielding School of Public Health.

UCLA is key player in consortium to tackle cancer

KNX-AM, [San Diego Metro](#), [SD News](#), [LGBT Weekly](#), and [San Diego Tribune](#) featured the announcement of University of California's cancer consortium, launched to better address cancer-related issues across the state. Dr. Michael Teitell, director of UCLA's Jonsson Comprehensive Cancer Center and professor of pathology and laboratory medicine at the David Geffen School of Medicine at UCLA, was interviewed by KNX.
KNX: <http://bit.ly/2x3gGNg>

Device used to close small hole in heart may prevent recurrent stroke

[Medscape](#), [Cardiovascular Business](#) and [MedPage Today](#) featured research led by Dr. Jeffrey Saver, director of the UCLA Comprehensive Stroke Center, about a device that closes a small hole in the heart and that may prevent recurrent stroke in some patients. Saver's study was published in the New England Journal of Medicine.

Using blood stem cells and T cells to fight cancer

[Los Angeles Business Journal](#), the [California Stem Cell Report](#) and [The Stem Cellar](#) reported on the launch of a UCLA clinical trial that utilizes genetically modified T cells and blood stem cells to provide patients with both short- and long-term immune response to the cancer. Dr. Antoni Ribas, a member of the UCLA Eli and Edythe Broad Center of Regenerative Medicine and Stem Cell Research and director of UCLA's Jonsson Comprehensive Cancer Center Immunology Program, is directing the trial.

Concussions in women: Rates, symptoms and recovery are different

[Consumer Affairs](#) published a story about how females tend to report more – and more severe – symptoms from concussions than men, and may also take longer to recover from brain injuries. Dr. Mayumi Prins, professor of neurosurgery at the David Geffen School of Medicine at UCLA and director of the UCLA Brain Injury Research Center, was featured.

Improving outcomes for liver transplant patients

[Life Science Daily](#), [Phys.org](#), [Techsite](#), [Healio](#) and [News-Medical.net](#) highlighted an \$8.4 million grant to UCLA from the National Institutes of Health to research ways to help donated livers last longer and improve outcomes for transplant recipients.

Genetic tests for breast and ovarian cancers are underused

A [Reuters](#) story highlighted research finding that more than 80 percent of women with a high risk of developing breast or ovarian cancer do not take a recommended genetic test that could detect it. The story ran in Business Insider, Radio USA, Health Medicine Network and 17 other outlets. Lead author Dr. Christopher Childers, resident physician in the UCLA Department of Surgery, was quoted.

Clean air energy leads to clean air for California

[Fox & Hounds](#) published an article by Dr. Michael Ong, associate professor of medicine in the division of general internal medicine and health services research, urging local leaders and residents to support the proposed California Clean Energy Act of 2017, which would establish a new state goal to achieve 100 percent renewable energy by 2045.

Expert explains extreme morning sickness

[Healthline.com](#) and [International Business Times](#) interviewed Marlena Fejzo, an associate researcher at the David Geffen School of Medicine at UCLA, about hyperemesis gravidarum, a condition that causes extreme morning sickness in some pregnant women, including the Duchess of Cambridge, who is expecting her third child.

More coverage of gene therapy study using “junk DNA”

[Biotechin.Asia](#) and [News Edge](#) reported on a new study in which researchers successfully used a gene that suppresses cholesterol levels in mice with a disorder called familial hypercholesterolemia. The gene, LeXis, belongs to a unique group of genes that until recently were considered “junk DNA.” Dr. Tamer Sallam, assistant professor of medicine, led the study.

Meds to Beds program delivers prescriptions to patients

[Bay City Times](#), [Bend Bulletin](#) and [Borneo Bulletin](#) syndicated a [Washington Post](#) story featuring a service offered at UCLA Health and other hospitals in which pharmacists deliver prescriptions to patients and review them before they are discharged from the hospital. The service was designed to help patients ease the transition to home and to prevent re-hospitalizations.

Combining herpes virus with immunotherapy shows promise in melanoma

[News-Medical.net](#), [World Pharma News](#), [MedicalXpress](#), [Science Daily](#) and [E Cancer News](#) featured new research led by Dr. Antoni Ribas, director of UCLA’s Jonsson Comprehensive Cancer Center Immunology Program, on a melanoma treatment that uses a modified version of the herpes virus and pembrolizumab. Ribas is also a professor of medicine in the division of hematology oncology at the David Geffen School of Medicine at UCLA.

Why do some women give birth before they're due?

[Healthline](#) featured Dr. Suhas Kallapur as an expert in a story about a new study finding genetic links to premature birth. Kallapur is chief of neonatology and professor of pediatrics and neonatology.

Understanding the research on concussions in football

[Inside Science](#) and [Athletic Business](#) featured Dr. Christopher Giza as an expert in a story about the latest research and insights on concussion and traumatic brain injury. Giza is director of the UCLA Steve Tisch BrainSPORT Program and a professor of pediatrics and neurosurgery at the David Geffen School of Medicine at UCLA and UCLA Mattel Children's Hospital.

Managing conjunctivochalasis

[Review of Ophthalmology](#) published a column by Dr. Benjamin Bert on tips for diagnosis as well as medical and surgical management of conjunctivochalasis. Bert is ophthalmologist at the Doheny Eye Center UCLA - Orange County.

This week on "Ask the Doctors"

UCLA Health internists Dr. Robert Ashley, Dr. Eve Glazier and Dr. Elizabeth Ko address health-related questions in the recurring "Ask the Doctors" column, syndicated by more than 50 outlets nationwide. A sampling of the stories from the past week's column:

- On smoking's harm regardless of filter use, featured in [The Cumberland Times-News](#)
- On gentle exercise for back pain, featured in [Indiana Gazette](#)
- On cross-contact during food preparation and allergies, featured in [Hanford Sentinel](#)
- On the importance of eating well and eliminating stress, featured in [The Frederick News-Post](#)
- On the over-prescription of antibiotics, featured in [Conroe News](#).

QUOTED

"Asian Americans could conceivably spend longer durations of caregiving, and therefore will be subjected to greater risk of stress and strain, compared to other caregivers who may be more willing to seek respite care or hiring somebody."

-Dr. Zaldy Tan in an [NBCNews.com](#) story about adult children who care for their parents



Dr. Ashley Busuttil, associate clinical professor in the department of medicine, commented in an article in [The Hospitalist](#) on how hospitalists can help reduce readmissions.

Dr. Alejandra Casillas, assistant professor-in-residence in the division of general internal medicine and health services research, was quoted in an [L.A. Sentinel](#) story about building better patient-provider relationships with patient portals.

Dr. Richard Finn, director of UCLA's Jonsson Comprehensive Cancer Center Signal Transduction and Therapeutics Program, was quoted in [Cancer Therapy Advisor](#) about new research suggesting that CDK4/6 inhibitors could facilitate an antitumor immune response in certain breast cancer patients. Finn is also an associate professor of medicine in the division of hematology oncology at the David Geffen School of Medicine at UCLA

Gerald Kominski, professor of health policy and management at the UCLA Fielding School of Public Health and director of the Fielding School's UCLA Center for Health Policy Research, discussed the concept of a Medicare For All proposal on KPCC-FM's [AirTalk](#).

Dr. Stephen Marder, director of the section on psychosis at the Semel Institute, commented in [Psychiatric News](#) on a novel compound that shows promise in treating negative symptoms of schizophrenia.

Dr. Gerardo Moreno, executive director of UCLA PRIME and associate professor-in-residence of family medicine, was quoted in a [Healio: Endocrine Today](#) story about an FDA forum on reducing hypoglycemia in older adults.

Dr. Leena Nathan, assistant clinical professor and obstetrician-gynecologist at UCLA Health-Westlake Village, commented in a [Health.com](#) article on certain foods and how they can affect vaginal health. The article also appeared in [Yahoo!.com](#), [The Edge](#) and [hellogiggles.com](#).

Dr. Gary Small, director of geriatric psychiatry at the Semel Institute and director of the UCLA Longevity Center, commented in a [Today Show](#) story about metformin, a drug touted by some as a "longevity pill."

Dr. Zaldy Tan was quoted in an [NBCNews.com](#) article about a woman who started a project through which adult children who are caring for their parents can share stories and reduce isolation. Tan is medical director of the UCLA Alzheimer's and Dementia Care Program and assistant dean for curricular affairs at the David Geffen School of Medicine at UCLA.

BRIEFS

A caption in a San Jose [Mercury News](#) article cited research from the Fielding School's UCLA Center for Health Policy Research suggesting a correlation between soda consumption and weight.

An [Inquirer.net](#) article about maternity leaves cites research from the UCLA Fielding School of Public Health finding that longer paid leaves reduce infant mortality.

The Magazine of Santa Clarita featured an article on new prostate cancer screening technologies available at UCLA Health-Santa Clarita Imaging and Interventional Center.



This report features media placements from UCLA Health, which includes the David Geffen School of Medicine at UCLA, Ronald Reagan UCLA Medical Center, UCLA Medical Center, Santa Monica, UCLA Mattel Children's Hospital, the Stewart and Lynda Resnick Neuropsychiatric Hospital at UCLA, the UCLA Health Clinics and the UCLA Faculty Practice Group.

It also includes placements from the UCLA Fielding School of Public Health, the UCLA School of Nursing, the UCLA School of Dentistry, the UCLA Jonsson Comprehensive Cancer Center and the UCLA Eli and Edythe Broad Center of Regenerative Medicine and Stem Cell Research.

UCLA's Health Sciences Media Relations office e-publishes this report weekly. For more information, please contact Tami Dennis, executive director of media relations, or call the Media Relations office at (310) 267-7022. Media Relations also offers publicity for new research, medical breakthroughs, inspirational patient stories and more. To identify the appropriate public information officer for your department, visit <https://www.uclahealth.org/Newsroom/Pages/Media-Relations-Directory.aspx>.