

# UCLA

# Health

## UCLA HEALTH SCIENCES MEDIA REPORT September 14-20, 2018

**Note:** Website links may expire without notice. Some sites require password registration. If you cannot access a story or would like to obtain a copy, please call (310) 267-7022.



[New York Times](#): Dr. Christopher Giza discusses new guidelines for pediatric concussion

(Photo: C Watts/flickr)



[ESPN](#): Is enough being done to help problem gamblers?

(Photo: pxhere)



[Neurology Live](#): Treatment tailored to teens with epilepsy

(Photo: UCLA Health)



## FEATURED

### **N.Y. Times examines new guidelines for pediatric concussion**

The [New York Times](#) interviewed Dr. Christopher Giza, director of the UCLA Steve Tisch BrainSPORT Program and a professor of pediatrics and neurosurgery at the David Geffen School of Medicine at UCLA, about the Centers for Disease Control and Prevention's new guidelines for the diagnosis and treatment of concussion in young patients. Giza was a coauthor of the national guidelines with Dr. Meeryo Choe, associate director of the BrainSPORT Program and a professor of pediatric neurology at the UCLA Mattel Children's Hospital. Both were quoted in a related [My Science](#) article.

### **Helping problem gamblers**

An [ESPN.com](#) story about gambling addiction and sports betting featured Dr. Timothy Fong, a clinical professor of psychiatry and director of the UCLA Addiction Psychiatry Fellowship. [ABC News](#) picked up the article.

### **Treatment tailored to teens with epilepsy**

[Neurology Live](#) published a Q&A with Dr. Jason Lerner, an associate professor of pediatric neurology and director of UCLA's recently opened Adolescent Epilepsy Center, a clinic that offers comprehensive care for teens with epilepsy.

### **New hope for patients with drug-resistant seizures**

---

The [Univision](#) network's "Primer Impacto" program aired a Spanish-language segment about the UCLA Seizure Disorder Center, which offers personalized treatment for people with epileptic seizures that don't respond to medication. The episode aired in Los Angeles on KMEX-TV and 26 other markets, including in New York and Chicago. Patient Sharon Shafer, a UCLA research librarian, was interviewed about her case, as well as her neurologist and neurosurgeon, Dr. Dawn Eliashiv and Dr. Itzhak Fried respectively, who co-direct the center. English-language coverage included local TV segments in Pennsylvania, Kentucky and Ohio, as well as [News-Medical Net](#) and [Health News Digest](#).

#### **Aggressive epithelial cancers have adult stem cell characteristics**

[MyScience.org](#), [Health News Digest](#) and [Medical Xpress](#) reported on a UCLA study finding genetic similarities between the adult stem cells responsible for maintaining and repairing epithelial tissues — which line all of the organs and cavities inside the body — and the cells that drive aggressive epithelial cancers. Dr. Owen Witte, founding director of the UCLA Broad Stem Cell Research Center and a distinguished professor of microbiology, immunology and molecular genetics, and Thomas Graeber, a member of the UCLA Broad Stem Cell Research Center, director of the UCLA Metabolomics Center and professor of molecular and medical pharmacology, led the research. Both are also members of the UCLA Jonsson Comprehensive Cancer Center.

#### **Older adults and addiction to sedatives**

A [Healthline](#) article about older adults who become dependent on sedatives such as Xanax for anxiety featured Grace Cheng, a clinical pharmacist in the department of medicine.

#### **Anti-inflammatory foods to reduce risk for chronic disease**

[Prevention.com](#) interviewed Dr. Zhaoping Li, director at the UCLA Center for Human Nutrition, for a story about anti-inflammatory foods and their health benefits.

#### **UCLA researchers receive grant to study combination therapy for lung cancer**

[HemOnc Today](#) covered a \$12 million grant to UCLA researchers to study pembrolizumab in combination with patients' genetically modified immune cells as a treatment for advanced lung cancer. Dr. Steven M. Dubinett, a professor of pathology and laboratory medicine and a member of the UCLA Jonsson Comprehensive Cancer Center, and colleagues will initiate the clinical trial.

#### **Grant could ultimately reduce diagnostic errors for breast cancer**

[The Cancer Letter](#) highlighted a \$3.2 million grant from the National Institutes of Health's National Cancer Institute to support a UCLA-led study examining how perception and cognition interact in the interpretation of breast biopsy images, with an aim to improve physicians' diagnostic skills and accuracy. Dr. Joann Elmore, a professor of medicine in the division of general internal medicine and health services research and a member of the Jonsson Comprehensive Cancer Center, will lead the five-year project and was quoted.

#### **Doctors' concerns over JUULing's health effects**

A Men's Health article about JUUL e-cigarettes and doctors' concerns about their health effects featured Dr. Holly Middlekauf, a professor of medicine in the divisions of cardiology and physiology. [MSN](#) carried the story.

#### **Characterizing the function of rare tumor cells**

[Technology Networks](#), [eCancer News](#), [MyScience.org](#), and [MedicalXpress](#) highlighted UCLA research on a mechanism that measures how cancer cells perform functions that

---

drive the disease.

### **Does cannabis use cause lung cancer?**

Canada's Daily Hive highlighted 2006 research led by Dr. Donald Tashkin, a professor of pulmonary and critical care, suggesting that there was no association between cannabis use and lung cancer. The [Vancouver](#), [Calgary](#), [Toronto](#) and [Montreal](#) editions of the Daily Hive carried the article. In addition, South Africa's [City Buzz](#), [North Coast Courier](#), [Phoenix Sun](#), [Berea Mail](#), and 51 other outlets referenced the study.

### **Medi-Cal costs may increase for California**

[KNCO radio](#) featured an interview with Shana Alex Charles, a faculty associate at the UCLA Center for Health Policy Research at the Fielding School, in which she discussed a new report from the Center. According to the report, California counties may need to cover more Medi-Cal costs if a federal funding cap is passed.

### **UCLA Fielding professor made history**

[Cosmos magazine](#) published an article about Elizabeth Stern, who taught at the UCLA Fielding School of Public Health in the 1960s. Stern conducted groundbreaking research into the connection between cervical cell changes and cervical cancer.

### **ACA reduced healthcare disparities among Latinos**

[Healthcare Finance](#) covered a new study led by Arturo Vargas Bustamante finding that more Latinos of Mexican heritage in California reported having health insurance and a usual source of care as compared with other Latinos after the Affordable Care Act's major provisions were implemented. Bustamante is an associate professor of health policy and management at the UCLA Fielding School of Public Health and a faculty associate at the UCLA Center for Health Policy Research at the Fielding School.

### **Treating liver cancer with lenvatinib**

An [OncLive](#) video featured Dr. Richard Finn, an assistant professor of medicine and member of the UCLA Jonsson Comprehensive Cancer Center, discussing data showing the efficacy of lenvatinib as a treatment for patients with liver cancer.

### **Deescalating early stage HER2+ breast cancer**

[OncLive](#) featured Dr. Sara A. Huvitz, an associate professor of medicine in the division of hematology oncology and a member of the UCLA Jonsson Comprehensive Cancer Center, who discussed research on deescalating therapy for patients with early-stage HER2-positive breast cancer.

### **Expert addresses oncology costs, potential impact of biosimilars**

[OncLive](#) interviewed Dr. Lee S. Rosen, a visiting professor of medicine in the division of hematology oncology and a member of the UCLA Jonsson Comprehensive Cancer Center, about the benefits of bevacizumab and how biosimilars could change the field as they continue to be explored in clinical trials.

### **Combination approach shows promise for beating advanced melanoma**

[Oncology Times](#) reported on a new study finding that combining pembrolizumab and SD-101 could be effective for people with advanced melanoma whose tumors have not responded to other therapies. The senior author, Dr. Antoni Ribas, a professor of medicine and director of the tumor immunology program at the UCLA Jonsson Comprehensive Cancer Center, was quoted.

---

### Shifting the understanding of breast cancer treatment

[OncLive](#) featured Dr. Dennis Slamon, director of research at UCLA Jonsson Comprehensive Cancer Center, about how the MONALEESA-3 trial results have shifted the understanding of therapy placement in women with HR-positive, HER2-negative advanced breast cancer.

### How unhealthy are energy drinks?

MEL Magazine interviewed Dana Hunnes, a senior dietitian at Ronald Reagan UCLA Medical Center and an adjunct assistant professor at the UCLA Fielding School of Public Health, for two stories about nutrition:

- [The first](#) examined the nutritional quality of various energy drinks.
- [The second](#) examined the health effects of low- and moderate-carb diets.

### This week in 'Ask the Doctors'

UCLA Health internists Dr. Eve Glazier and Dr. Elizabeth Ko address health-related questions in the recurring "Ask the Doctors" column, syndicated by more than 50 outlets nationwide. Glazier is an associate professor of medicine, and Ko is an assistant professor of medicine. A sampling of stories from this past week's column:

- On working and heart attacks, in Oklahoma's [Tulsa World](#).
- On low muscle mass as a predictor for dementia, in Florida's [The Daytona Beach News-Journal](#).
- On intense video gaming, in Massachusetts' [The Berkshire Eagle](#).

---

## QUOTED

*"Parents know their child best and how much information they can take in."*

- **Melissa Brymer**, on how to talk to children about disasters, in [Huffington Post](#)



---

**Dr. Armen Arevian**, an assistant professor in residence of psychiatry and biobehavioral sciences, commented to [U.S. News & World Report](#) about telemedicine and care via video.

**Dr. Deanna Attai**, an assistant clinical professor of surgery and a breast cancer surgeon at UCLA Health-Burbank Breast Care, was quoted in the [New York Times](#) about a new approach to breast reconstruction that could reduce pain and weakness.

- She was also quoted in [MedPage Today](#) about new research suggesting that in certain breast cancer patients for whom axillary surgery might have previously been recommended, such surgery may be avoidable.

**Melissa Brymer**, the director of terrorism and disaster programs at the [UCLA-Duke University National Center for Child Traumatic Stress](#), was quoted in [Huffington Post](#) about how to talk to children about natural disasters.

**Dr. Jeff Chen**, director of the UCLA Cannabis Research Initiative, was quoted on KCRW-FM, Los Angeles, about barriers to cannabis research and legislation to ease those barriers.

**Dana Hunnes**, a senior dietitian at Ronald Reagan UCLA Medical Center and an adjunct assistant professor at the UCLA Fielding School of Public Health, was quoted by [Gizmodo](#) about whether breakfast cereal can be healthy.

**Dr. Jeffrey Klausner**, an adjunct professor of epidemiology at the UCLA Fielding School of Public Health and a professor of medicine in the division of infectious diseases at the David Geffen School of Medicine at UCLA, was quoted in the [South Florida Gay News](#) about an increase in STD rates.

**Dr. Carlos Lerner**, an associate professor of pediatrics at UCLA Mattel Children's Hospital, commented in the [Atlanta Journal-Constitution](#) and four other outlets about new research from the American Academy of Pediatrics advising that parents encourage their children to engage in unstructured play. The article originally ran in the [Los Angeles Times](#).

**Dr. Jesse Mills**, director at The Men's Clinic at UCLA, was quoted in [Men's Health](#) about prostate massage.

**Nadereh Pourat**, a professor-in-residence of health policy and management at the UCLA Fielding School of Public Health and director of research at the UCLA Center for Health Policy at the Fielding School, was quoted on [Wisconsin Public Radio](#) about a Wisconsin state bill backed by Gov. Scott Walker that he says would be equivalent to the ACA, which Walker is trying to help overturn.

**Dr. Molly Quinn**, an assistant professor of obstetrics and gynecology, was quoted by [NPR](#) about research suggesting that children conceived through certain infertility treatments may be at a higher risk for cardiovascular disease. The websites of [Southern California Public Radio](#), [Oregon Public Broadcasting](#), [New England Public Radio](#), and 22 others ran the article.

**Dr. David Reuben**, chief of the UCLA Division of Geriatrics, commented to [NPR](#) about seniors turning to cannabis for pain relief. [Philly Voice](#), [Minnesota Public Radio](#), [ABC News](#), WAMU-FM, Washington D.C., and 70 other outlets carried the story.

**Dr. Antoni Ribas**, a professor of medicine and director of the tumor immunology program

---

at the UCLA Jonsson Comprehensive Cancer Center, was quoted in [Europa Press](#) about advances in immunotherapy helping patients with melanoma.

**Dr. Adam Schickedanz**, a pediatrician and health services researcher and assistant professor of pediatrics, was quoted by [NPR](#) story a study finding that childhood trauma and its lifelong health effects are more prevalent among minorities. The websites of [Public Radio Tulsa](#), [New Hampshire Public Radio](#), [Northern Public Radio](#), and 26 others ran the story.

**Steven P. Wallace**, a professor of community health sciences at the UCLA Fielding School of Public Health and the associate director of the UCLA Center for Health Policy Research at the Fielding School, was quoted by [Reuters](#) about a new study reporting that immigrants use fewer healthcare services than people born in the U.S.

---

## BRIEFS

UCLA Health's Operation Mend program was cited in a [Calaveras Enterprise](#) article about a local Vietnam veteran named Ric Ryan who is celebrating his 10<sup>th</sup> anniversary of fundraising for the UCLA program. Operation Mend provides advanced surgical and medical treatment, as well as comprehensive psychological-health support for post-9/11-era service members, veterans and their families at no cost.

A [Buzzfeed](#) community post featured a stem cell gene therapy cure for a rare and fatal immune deficiency disease developed by Dr. Donald Kohn of the UCLA Broad Stem Cell Research Center on its list of "11 Ways UCLA Takes The Lead In Tackling The Challenges Of Tomorrow."

A [Neurology Live](#) article about a phase II clinical trial of trans sodium crocetin in the treatment of acute stroke cited Dr. Jeffrey Saver, director of the UCLA Comprehensive Stroke Center, who will chair the trial.

An article about a therapy program that uses rescued herd animals for physical, emotional and mental therapy that ran in the [Moorpark Acorn](#) and [Camarillo Acorn](#) cited UCLA research on animal-assisted therapy.

The [California Health Report](#) referenced a grant from L.A. Care to encourage medical students to pursue careers in primary care. Eight students at the David Geffen School of Medicine at UCLA and the Charles Drew University School of Medicine are receiving scholarships of \$350,000 apiece, meaning they will not have the burden of repaying student loans or financing their living expenses, removing the financial pressure on them to select a medical specialty more lucrative than primary care.

The [ABC-TV](#) affiliate for Jacksonville, Florida, reported that the Kate Amato Foundation funded Dr. Martina Roos and Dr. John Chute, both hematology-oncology researchers at the David Geffen School of Medicine at UCLA, in their efforts to develop a new targeted

---

drug for rare pediatric leukemias.

An opinion piece published in the [Times Standard](#), a daily newspaper based in Eureka, California, cited data from the California Health Interview Survey, administered by the UCLA Center for Health Policy Research at the UCLA Fielding School of Public Health. The piece noted that the survey reports that between 2001 and 2014, the number of low-income seniors in California who report food insecurity nearly doubled.

[OncLive](#) noted that Dr. Patricia A. Ganz, director of cancer prevention and control research at the UCLA Jonsson Comprehensive Cancer Center and distinguished professor of health policy and management at the UCLA Fielding School of Public Health, will be recognized by the ACCC for her pioneering work. Ganz will receive the Clinical Research Award at the 35<sup>th</sup> National Oncology Conference in October in Phoenix.

An article in [Virily](#) about the use of nanotechnology in cancer care notes that researchers at UCLA use two different nanoparticles to treat pancreatic cancer – one to remove material on the exterior which hinders delivery of chemotherapy drugs to cancer cells and the other to deliver the drug.

[Becker's Hospital Review](#) noted that Ronald Reagan UCLA Medical Center ranked on Medscape surveys of the best medical centers to be treated for cardiac conditions, infectious diseases and lung cancer.

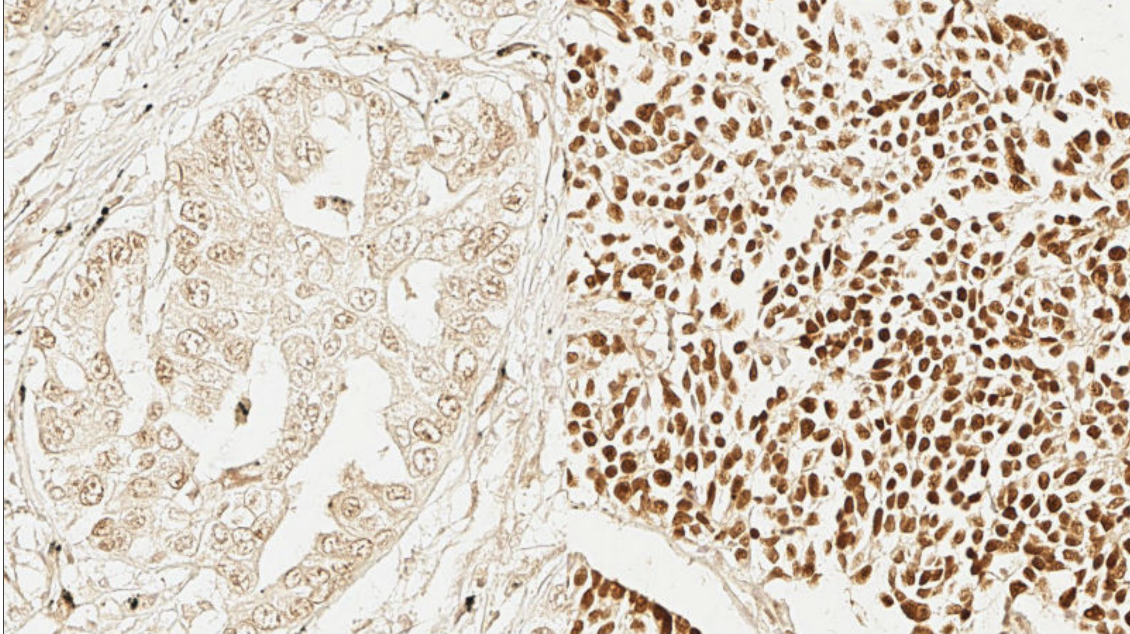
[VegNews](#) noted that UCLA Health and various companies are taking steps toward plant-based food service.

---

**CONTENT CREATED BY MEDIA RELATIONS**

---





[UCLA Newsroom](#): Researchers find adult stem cell characteristics  
in aggressive cancers from different tissues

(Photo: UCLA Broad Stem Cell Research Center/Cell Reports)



[Share](#)



[Tweet](#)



[Share](#)

[Decades later, man meets the UCLA doctor who saved his life](#) UCLA Newsroom

[UCLA-led team develops new system for tracking chemicals in the brain](#) UCLA Newsroom

[UCLA researchers develop mechanism for characterizing function of rare tumor cells](#) UCLA Newsroom

[First CDC guidelines for treating children's concussions offer valuable tool for doctors, UCLA researchers report](#) UCLA Newsroom

[Researchers receive grant from Arthritis Foundation](#) UCLA Newsroom

---



---

This report features media placements about UCLA Health, which includes the David Geffen School of Medicine at UCLA, Ronald Reagan UCLA Medical Center, UCLA Medical Center, Santa Monica, UCLA Mattel Children's Hospital, the Stewart and Lynda Resnick Neuropsychiatric Hospital at UCLA, the UCLA Health Clinics and the UCLA Faculty Practice Group.

It also includes placements about the UCLA Fielding School of Public Health, the UCLA School of Nursing, the UCLA School of Dentistry, the UCLA Jonsson Comprehensive Cancer Center and the UCLA Eli and Edythe Broad Center of Regenerative Medicine and Stem Cell Research.

UCLA's Health Sciences Media Relations office e-publishes this report weekly. For more information, please contact Tami Dennis, executive director of media relations, or call the Media Relations office at (310) 267-7022. Media Relations also offers publicity for new research, medical breakthroughs, inspirational patient stories and more. To identify the appropriate public information officer for your department, visit <https://www.uclahealth.org/Newsroom/Pages/Media-Relations-Directory.aspx>.