

REPORT OF THE 329th CELL EXCHANGE

NOVEMBER 14, 2007

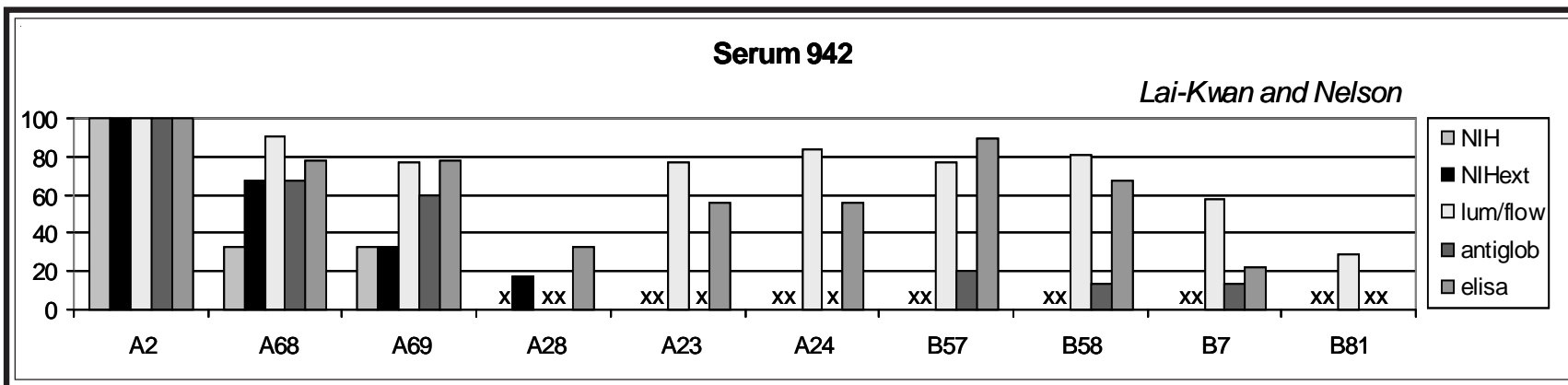
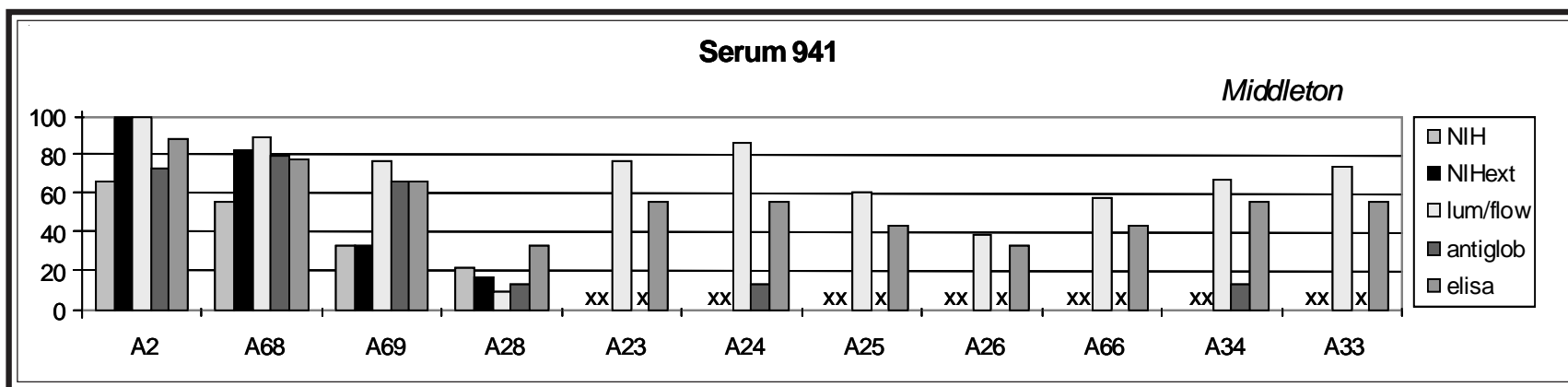
Serum	941-944
DNA Extract	401-404
Cells	1313-1316

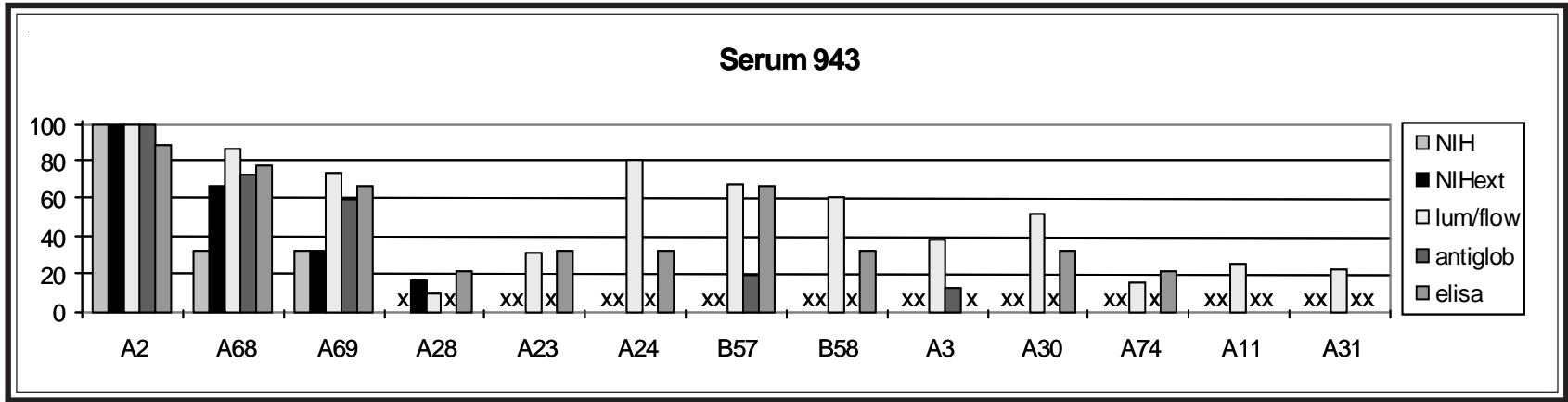
Serum Exchange

We wish to acknowledge the generous collaboration of **Derek Middleton, Northern Ireland Histocompatibility and Immunogenetics Laboratory, City Hospital, Belfast**, and **Pauline Lai-Kwan and Kathie Nelson, BloodSource,**

Sacramento, in offering interesting sera for our exchange studies.

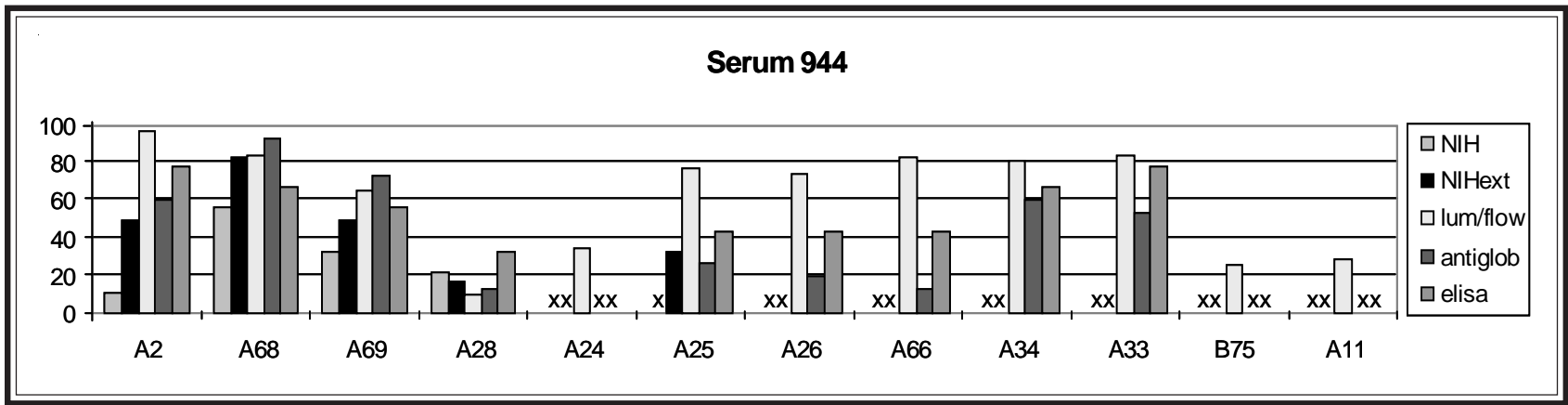
This month's study featured 4 allosera (**sera 941-944**) strongly reactive to A2 and A28 (A68, A69).





All 4 sera were determined to be positive to A2, A68, and A69 by all methods. Labs using NIH detected weaker anti-A2 reactivity for serum 944

in comparison to the strong anti-A2 reactivity levels of the other 3 sera. Labs using antiglobulin reporting additional anti-A10 and -A33 for serum 944.



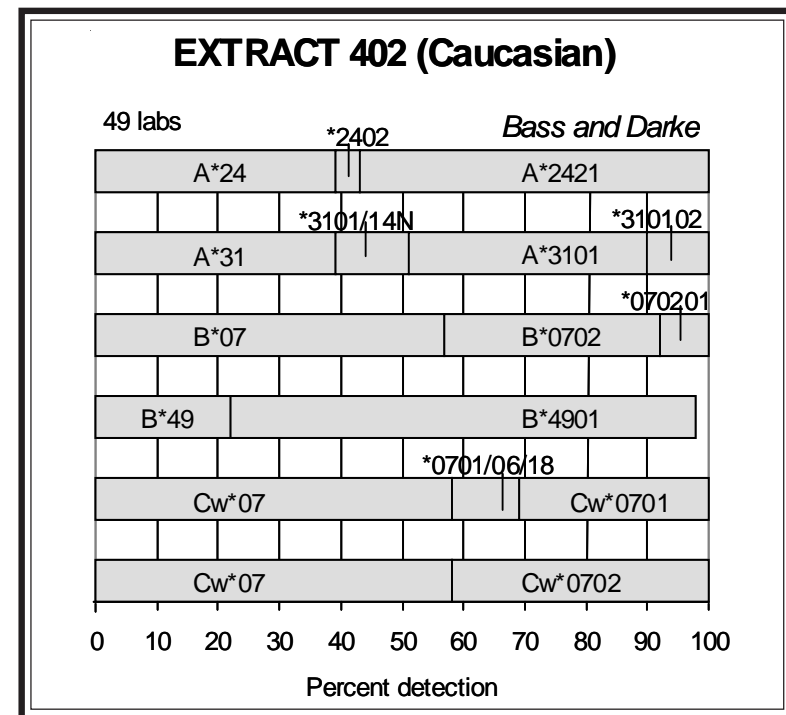
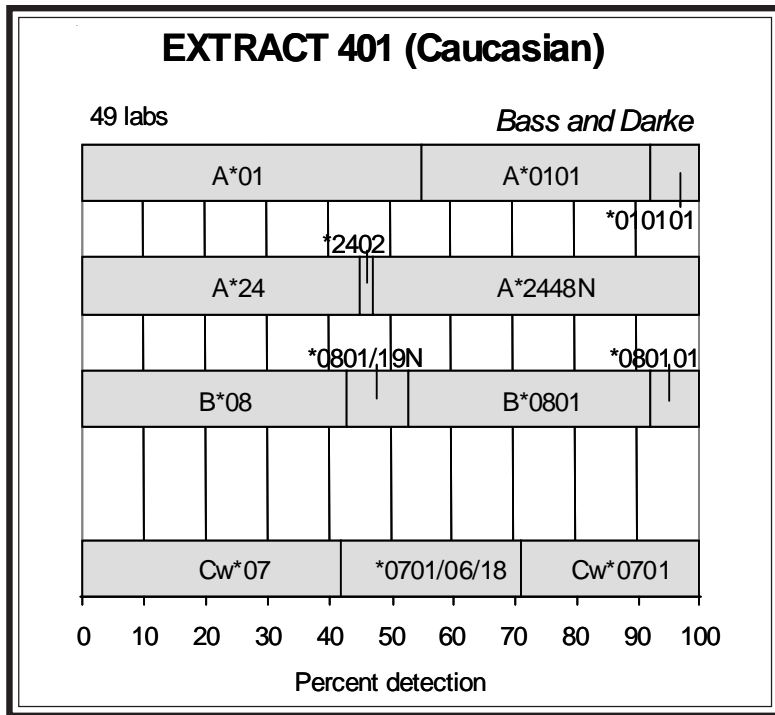
For all 4 sera, results from labs using the more sensitive methods of Luminex, flow, and ELISA indicated reactivity to secondary clusters of antigens in addition to A2 and A28, as indicated by the following:

	A2	A28	A9	A10	A33	B17
941	+	+	+	+	+	
942	+	+	+			+
943	+	+	+			+
944	+	+		+	+	

Extract Exchange

We wish to express our appreciation to **Helen Bass and Christopher Darke, Welsh Blood Service, Pontyclun; Doug Smith, Baylor University Medical Center, Dallas; and Eric Mickelson and John Hansen, Fred Hutchinson Cancer Research Center, Seattle**, for their generous donations of unusual cells.

The month's study offered labs the hands-on opportunity to type reference cells with selected A*24 alleles, including A*2421, A*2433, and A*2448N. A*2421 and A*2448N were typed for the first time in the Cell Exchange. Other interesting alleles, including B*3541 and B*5106, were also examined.



Extract 401. This cell from a Caucasian donor was 43623, the reference cell for A*2448N, as correctly identified by Brown, Chen, and McIntyre.

A*2448N (53%) was reported by over half of the labs.

The other A-locus allele was A*0101 (45%).

B*0801 was the sole B-locus allele, as detected by 47%.

Cw*0701 was reported by 29%, with another 29% assigning Cw*0701/06/18.

Extract 402. This Caucasian cell was 37057, a reference for A*2421, as noted by Brown, Moses and Dunckley, and McIntyre. A*2421 was first

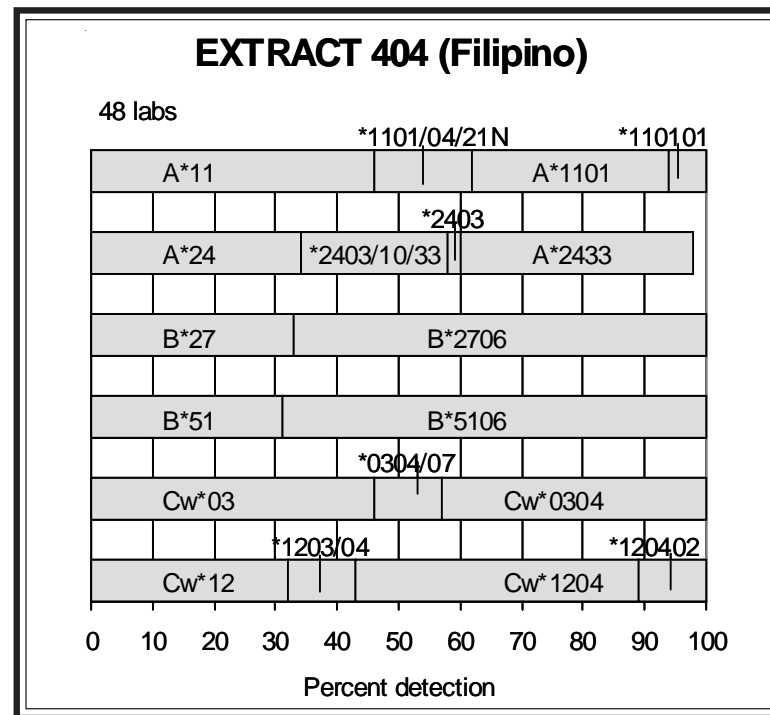
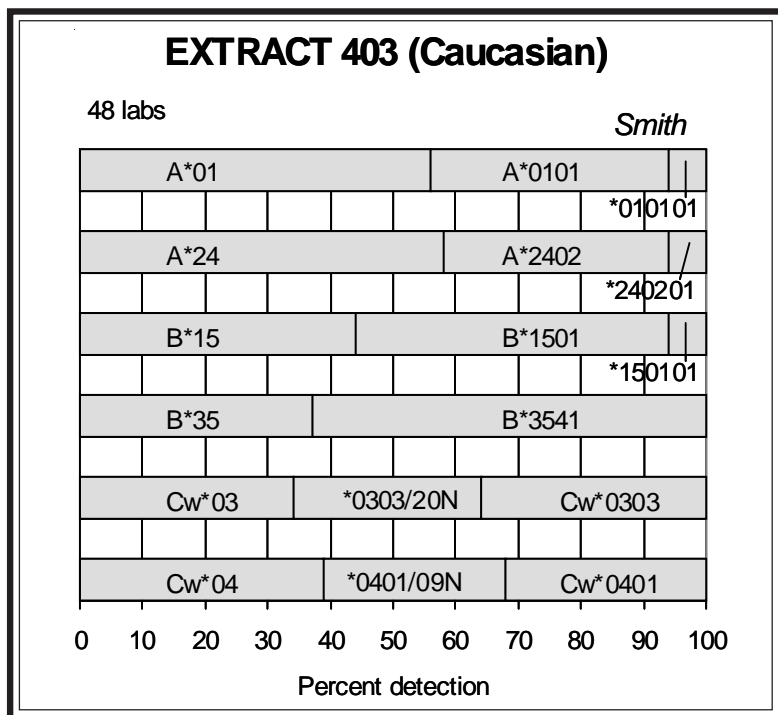
described in Korean individuals by Lee and Cho (1), "The new sequence is similar to A*2402101, differing at codon 127 (AAA- \rightarrow AAC; K- \rightarrow N)."

A*2421 was assigned by 57% of the labs.

The second A-locus type was A*3101 (49%).

The B-locus alleles were B*0702 (43%) and B*4901 (76%).

The C-locus types were Cw*0701 (31%) and Cw*0702 (42%). Two commonly found associations, B*0702-Cw*0702 and B*4901-Cw*0701, were likely present in this cell.



Extract 403. The rare B*3541 was present in this cell from a Caucasian individual. This was the third B*3541 cell typed in the Cell Exchange. The previous B*3541 cells were extracts 337 (Cauc) and 390.

B*3541 was reported by 63%.

The second B-locus allele was B*1501 (56%).

A*0101 (44%) and A*2402 (42%) were detected in this cell. This cell with the common A*2402 may be used as a quality control standard in reference to the other A*24 variants in this study.

Cw*0303 (36%) and Cw*0401 (32%) were the C-locus types. B*1501-Cw*0303 and B*3541-Cw*0401 were the probable associations.

Extract 404. This cell from a Filipino donor was 17933/00, one of the reference A*2433 cells, as correctly identified by Chen and McIntyre. It was also typed

in recent international workshops as IHW#9434. The class I type matched that of cell 1134 (2002); however, this present cell was not from the same donor.

A*2433 was detected by 38%, with another 24% reporting A*2403/10/33.

Over 60% of the labs assigned B*2706 (67%) and B*5106 (69%).

The C-locus alleles were Cw*0304 (43%) and Cw*1204 (57%), with 11% assigning Cw*120402.

The probable haplotypes in this cell were A*1101-B*2706-Cw*0304 and A*2433-B*5106-Cw*120402. A*1101-B*2706-Cw*0304 was previously found in extract 36 (Filp) and cells 1134 (Filp) and 1217 (Chin). All previous A*2433 exchange cells (extracts 217, 255, 266, 267, 304; cells 1134, 1278) were found in association with B*5106 and Cw*120402.

Cell Exchange

Cell 1313. It was apparent that a variant of A24 was present in this cell from a Chinese donor. Danilovs, Holdsworth, Kopko, Lebeck, Pidwell, and Pollack commented that the anti-A24 reactivity was shorter than normal. A2403 was reported by 29%; overall, A24 was assigned by 96%. The presence of A*2403 (49%) was confirmed by half of the labs.

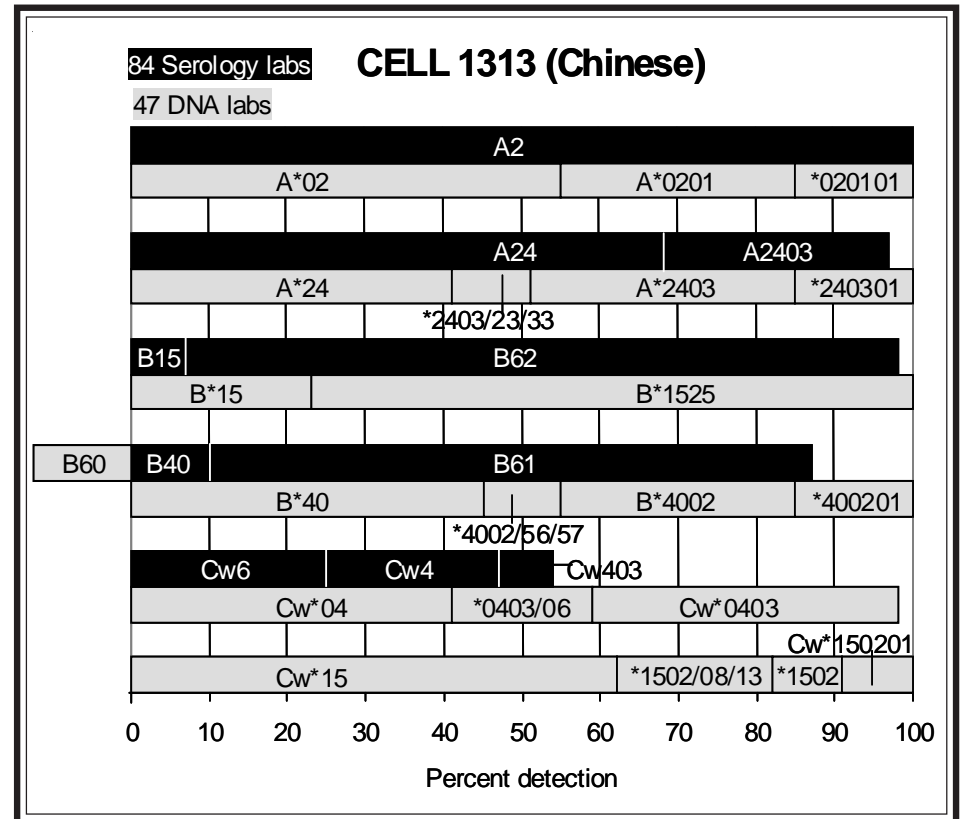
B62 was detected by 91%. Abbal, Holdsworth, Kopko, and McCluskey noted varied anti-B62 and -B75 reactivity. The majority of the labs assigned B*1525 (77%). B*1525 was previously typed in cells 861 (Asian), 954 (Chin), 1285 (Asian), and 1286 (Filp).

B61 (77%) was the second B-locus antigen, confirmed as B*4002 (45%). B60 was misassigned by 13%.

The reporting of Cw4 (21%) and Cw6 (25%) were indicative of the presence of the C-locus variant encoded by Cw*0403 (39%).

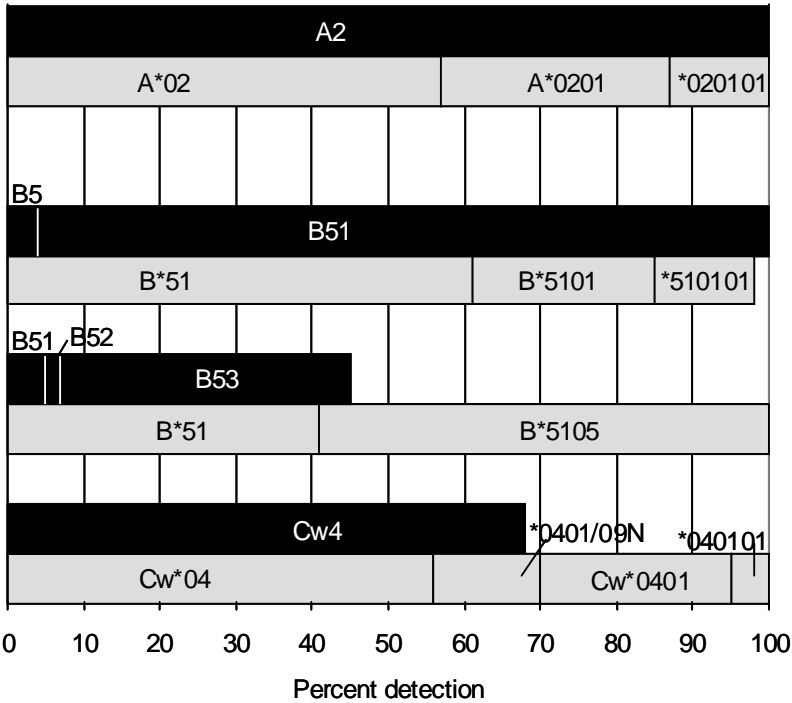
Cw*15 was the second C-locus allele; Cw*1502 was assigned by 18%.

The probable associations were B*1525-Cw*0403 and B*4002-Cw*1502. Both associations are commonly found in Asian donors.



84 Serology labs **CELL 1314 (Caucasian)**

46 DNA labs



Cell 1314. B51 (96%) was well typed in this Caucasian cell. A number of labs indicated that a second B-locus antigen related to B53 (38%) and B51 (5%) was also present, but definitive assignment was muddled by the presence of the standard B51, as commented by Anthony Nolan Trust, Kopko, Lefor, and Steinberg. Molecular-based typing results revealed two different B*51 subtypes, B*5101 (37%) and the rare B*5105 (59%). This was the second B*5105 cell typed by both serologic and DNA methods in the Cell Exchange, the first one being cell 1109 (2002), also from a Caucasian donor. The serologic typing results for cell 1109 indicated inconsistent anti-B51 and -B53 reactivity, that is, B51 (45%), B53 (33%), and B*5102 (12%). B*5105 was also typed in another exchange cell, extract 340 in 2005. The NMDP dataset in the 2004 HLA Dictionary listed the following assigned types for 25 B*5105 cells: B51 (48%), B53 (24%), and B52 (16%) (2).

Cw4 (68%) was confirmed as Cw*0401 (30%) as the sole C-locus type.

The associations in this cell may be B*5101-Cw*0401 and B*5105-Cw*0401. B*5105-Cw*0401 was found in both previous B*5105 cells, cell 1109 and extract 340.

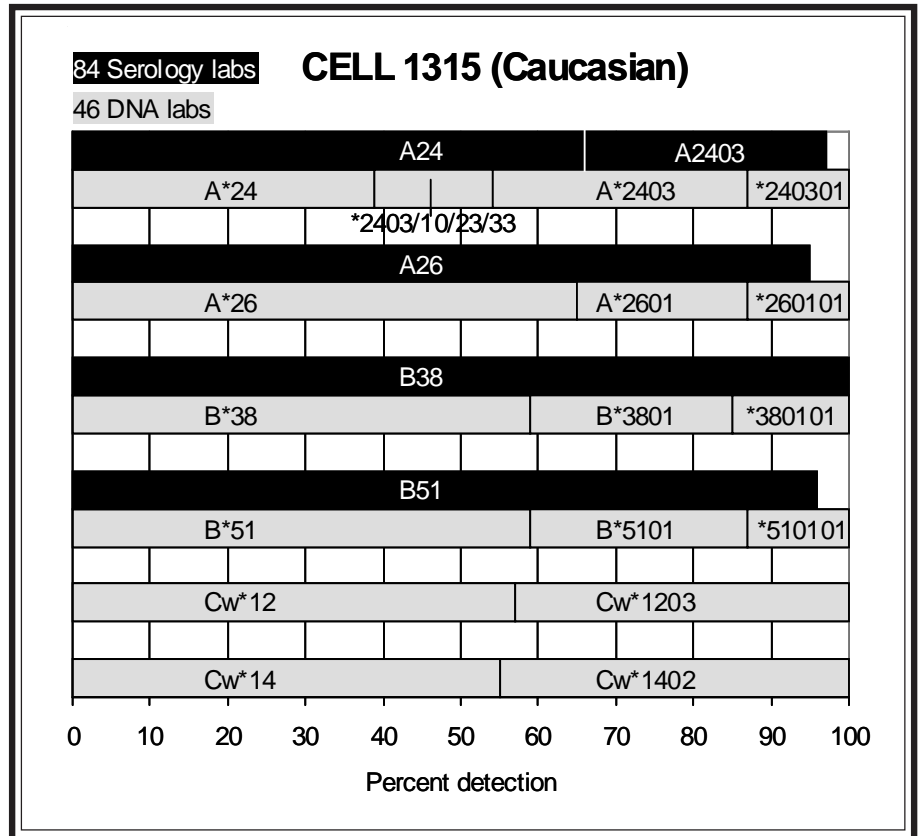
Cell 1315. A2403, as assigned by 31%, was present in this Caucasian donor. Overall, A24 was assigned by 98%. Several labs, including Danilovs, Kopko, McCluskey, and Pollack, noted a short A24. The A24 variant was confirmed as A*2403 by 46%.

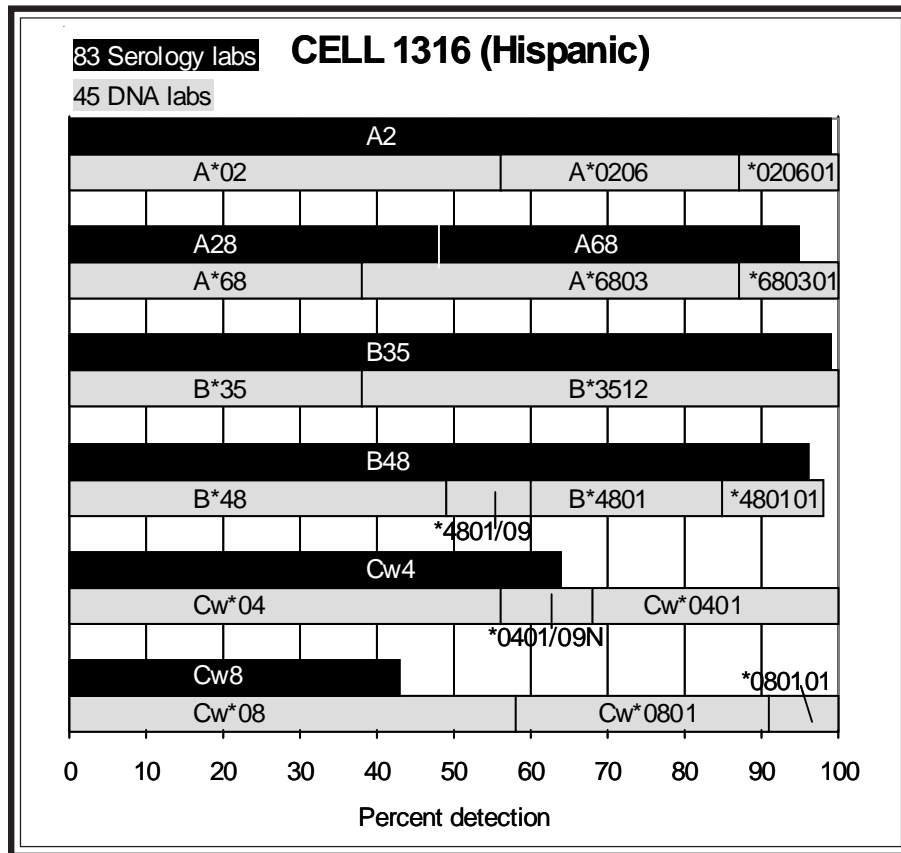
A26 (95%) was well typed and verified as A*2601 by 35%.

B38 (100%) and B51 (96%) were corroborated as B*3801 (41%) and B*5101 (41%), respectively.

Cw*1203 (43%) and Cw*1402 (45%) were the C-locus types.

The probable haplotypes in this cell were A*2403-B*5101-Cw*1402 and A*2601-B*3801-Cw*1203. A*2601-B*3801-Cw*1203 was determined to be a frequently found haplotype in U.S. Caucasians, with HF=0.0170 (3).





Cell 1316. This Hispanic cell was well typed as A2, A28 (A68), B35, B48, Cw4, Cw8 and A*0206, A*6803, B*3512, B*4801, Cw*0401, Cw*0801.

A*0201-B*3512-Cw*0401 and A*6803-B*4801-Cw*0801 were the probable haplotypes. A*0201-B*3512-Cw*0401 was listed as the fourth most frequent A-B-C haplotype in U.S. Hispanics, with HF=0.0107 (3). B*4801-Cw*0801 is a commonly found association.

References

1. Lee KW and Cho HC. Serologic heterogeneity of HLA-A24 correlates with allelic types in the Korean population. *J Korean Med Sci* 2000;15:623.
2. Schreuder GMTh, Hurley CK, Marsh SGE, et al. The HLA Dictionary 2004: a summary of HLA-A, -B, -C, -DRB1/3/4/5 and -DQB1 alleles and their association with serologically defined HLA-A, -B, -C, -DR and -DQ antigens. *Tissue Antigens* 2005;65:1.
3. Cao K, Hollenbach J, Shi X, et al. Analysis of the frequencies of HLA-A, B, and C alleles and haplotypes in the five major ethnic groups of the United States reveals high levels of diversity in these loci and contrasting distribution patterns in these populations. *Hum Immunol* 2001;62:109.



This is the last sendout in 2007.

We wish you a most peaceful and joyful holiday season! Happy New Year!

Marie, Arlene, Magdalena, Lupita, Cathy, Kelli, Tianyi, George, Rodel, John L. and John M.



NEXT MAILING DATE: February 6, 2008

Marie Lau, Min S. Park, J. Michael Cecka, and Elaine F. Reed

***** SERUM NO. 941 ***** SERUM NO. 942 *****

*** 57 TYPING LABS ***

A2	88%	0.857
A68	77%	0.980
A69	56%	1.000
A24	40%	0.973
A23	39%	0.966
A33	37%	0.955
A34	33%	0.973
A25	28%	0.973
A66	25%	1.000
A28	19%	0.976
A26	16%	0.962
B57	9%	0.909
A10	5%	1.000
A9	4%	1.000
B58	4%	1.000
B63	4%	0.667
A1	4%	0.643

*** 57 TYPING LABS ***

A2	98%	0.977
A68	67%	0.888
A69	54%	1.000
B57	44%	1.000
B58	39%	1.000
A24	37%	0.909
A23	33%	0.979
B7	25%	1.000
B81	12%	1.000
A28	12%	0.870
B27	11%	0.800
A30	9%	1.000
A3	5%	1.000
A9	5%	1.000
A33	5%	1.000
A74	5%	1.000
B17	5%	1.000
A11	4%	1.000
A25	4%	1.000
A31	4%	1.000
A34	4%	1.000
A66	4%	1.000

Methods:

- (1) - NIH std
- (2) - NIH ext
- (3) - Luminex/Flow
- (4) - Antiglobulin
- (5) - Elisa
- (6) - Other

*** 57 LABORATORIES REPLIED ***

***** NEXT SHIPMENT: FEB 6 2008 *****

Method: All

***** SERUM NO. 941 ***** SERUM NO. 942 *****

*** 9 TYPING LABS ***

A2	67%	0.646
A68	56%	0.913
A69	33%	1.000
A28	22%	0.875
???	11%	1.000

*** 9 TYPING LABS ***

A2	100%	0.941
A69	33%	1.000
A68	33%	0.300

*** 9 LABORATORIES REPLIED ***

Method: NIH-std

***** SERUM NO. 941 ***** SERUM NO. 942 *****

*** 6 TYPING LABS ***

A2	100%	1.000
A68	83%	1.000
A69	33%	1.000
A28	17%	1.000
B57	17%	0.800

*** 6 TYPING LABS ***

A2	100%	0.988
A68	67%	0.857
A69	33%	1.000
A28	17%	0.571

*** 6 LABORATORIES REPLIED ***

***** NEXT SHIPMENT: FEB 6 2008 *****

Method: NIH-ext

	% POS 8'S		SERUM NO. 941										% POS 8'S		SERUM NO. 942										METHOD			
			A	A	A	A	A	A	A	A	A	A	A	A	A	A	B	B	A	A	B	B						
Alvarez & Ca	68	100	+	+	+		+	+							56	100	+	+					+					(F-3)
Burger, Joe	18	100	+	+	+	+	+	+	+	+	+	+	+	+	31	100	+	+	+	+	+	+	+	+	+	+	+	(L-3)
Cantwell, Lin	???	???	+	+	+	+	+	+	+	+	+	+	+	???	???	+	+	+	+	+	+	+	+	+	+	+	A30 (L-3)	
Darke, Christ	???	???	+	+	+	+	+	+	+	+	+	+	+	???	???	+	+	+	+	+	+	+	+	+	+	+	2403 (L-3)	
Dunn, Paul Ph	67	???	+	+	+	+	+	+	+	+	+	+	+	75	???	+	+	+	+	+	+	+	+	+	+	+	A3, B46 (L-3)	
Eckels/CPMC,	82	???	+		+		+		+		+		99	???	+		+		+		+		+		+	A11, A25, A26, A3 (LF-3)		
Ellis, Thomas	86	???	+					+					99	???	+						+				+	A28, A9, B17, B13 (LF-3)		
Esteves-Kond	88	86	+	+	+	+	+		+				100	100	+	+	+		+	+	+		+		+	A33, A32 (F-3)		
Fotino, Maril	58	???	+	+	+	+							64	???	+	+	+	+		+			+		+	B52, 3303 (L-3)		
Gautreaux, Mi	94	???	+	+	+	+	+						74	???	+	+	+			+	+			+	+	A34, A33, A66> (L-3)		
Hamdi, Nuha D	31	83	+	+					+				55	100	+	+	+	+	+	+	+			+	+	B37, B48, B44 (L-3)		
Han, Hoon Dr	71	???	+	+	+	+	+						82	???	+		+	+	+		+			+	+	(L-3)		
Harville/ACH	???	???	+	+	+	+	+	+	+	+	+	+	???	???	+	+	+	+	+	+	+		+		+	A30, A74, A31 (F-3)		
Klein, Tirza	76	100	+	+	+		+	+		+			74	100	+	+	+	+	+	+	+		+	+	+	A36, B35, B49> (L-3)		
MacCann, Eile	78	???	+	+	+		+	+		+			100	???	+	+	+	+	+	+	+		+		+	B57, B58 (L-3)		
McAlack-Bala	72	100	+	+	+	+	+	+	+	+	+	+	96	100	+	+	+	+		+	+		+		+	A30, B72, B18 (L-3)		
Moore, S. Brea	23	???	+	+	+	+	+	+	+	+	+	+	32	???	+	+	+	+	+	+	+	+	+	+	+	(L-3)		
Ozawa, Mikki	???	???	+	+	+	+	+	+	+	+	+	+	???	???	+	+	+	+	+	+	+	+	+	+	+	(L-3)		
Phelan, Donna	23	???	+	+	+	+	+	+	+	+	+	+	36	???	+	+	+	+	+	+	+	+	+	+	+	A30, A31, A25 (L-3)		
Pidwell, Dian	???	???	+	+	+	+	+		+	+	+	+	???	???	+	+	+	+	+	+	+	+	+	+	+	A3, A74 (F-3)		
Rosen-Bronso	75	100	+	+	+	+	+	+	+	+	+	+	99	100	+	+	+	+	+	+	+	+	+	+	+	A74, A66 (F-3)		
Sage, Deborah	69	???	+	+	+	+	+	+	+	+	+	+	82	???	+	+	+	+	+	+	+	+	+	+	+	A3, A30 (L-3)		
Smith/Baylor	62	???	+	+	+	+	+	+	+	+	+	+	45	???	+	+	+	+	+	+	+	+	+	+	+	(L-3)		
Smith/MI,	65	???	+	+	+	+	+	+		+			69	???	+	+	+	+	+	+	+	+	+	+	+	(L-3)		
Suciu-Foca, N	???	100	+	+	+	+	+	+	+	+	+	+	???	100	+	+	+	+	+	+	+	+	+	+	+	(L-3)		
Sullivan, Kar	???	???	+	+				+					???	???	+	+	+	+	+	+	+	+	+	+	+	A9, A11, A28 (L-3)		
Turner, E.V.	50	92	+	+									40	100	+	+	+	+	+	+	+		+		+	(L-3)		
Ward, William	77	???	+	+	+	+	+	+	+	+	+	+	94	???	+	+	+	+	+	+	+	+	+	+	+	(LF-3)		
Yu_Neng/ARC,	15	???	+	+	+	+	+	+	+	+	+	+	18	???	+	+	+	+	+	+	+	+	+	+	+	A30 (L-3)		
Yu_Neng/UMMM	72	???	+	+	+	+	+	+	+	+	+	+	50	???	+	+	+	+	+	+	+	+	+	+	+	A3 (L-3)		
Zachary, Andr	72	???	+		+	+	+	+	+	+	+	+	100	???	+	+	+			+			+		+	A28 (L-3)		

(3) - L-Luminex, F-Flow

***** SERUM NO. 941 ***** SERUM NO. 942 *****

*** 31 TYPING LABS ***

A2	100%	0.931
A68	90%	1.000
A24	87%	1.000
A69	77%	1.000
A23	77%	0.966
A33	74%	0.957
A34	68%	0.975
A25	61%	1.000
A66	58%	1.000
A26	39%	1.000
A28	10%	1.000
B57	6%	1.000
B58	6%	1.000
B63	6%	0.667
2403	3%	1.000
3303	3%	1.000
A1	3%	1.000
A3	3%	1.000
A9	3%	1.000
A10	3%	1.000
A11	3%	1.000
A29	3%	1.000
A30	3%	1.000
A36	3%	1.000
B7	3%	1.000
B17	3%	1.000
B35	3%	1.000
B39	3%	1.000
B49	3%	1.000
B52	3%	1.000
B53	3%	1.000
B81	3%	1.000
CW8	3%	1.000
A74	3%	0.500
B42	3%	0.500
CW16	3%	0.500
CW14	3%	0.500

*** 31 TYPING LABS ***

A2	100%	1.000
A68	90%	1.000
A24	84%	1.000
B58	81%	1.000
A23	77%	1.000
A69	77%	1.000
B57	77%	1.000
B7	58%	1.000
B81	29%	1.000
A30	23%	1.000
B27	23%	1.000
A3	19%	1.000
A11	10%	1.000
A25	10%	1.000
A31	10%	1.000
A33	10%	1.000
A74	10%	1.000
A9	6%	1.000
A28	6%	1.000
A32	6%	1.000
A34	6%	1.000
A66	6%	1.000
2403	3%	1.000
3303	3%	1.000
A26	3%	1.000
B13	3%	1.000
B17	3%	1.000
B18	3%	1.000
B22	3%	1.000
B37	3%	1.000
B40	3%	1.000
B44	3%	1.000
B46	3%	1.000
B48	3%	1.000
B52	3%	1.000
B60	3%	1.000
B61	3%	1.000
B72	3%	1.000

*** 31 LABORATORIES REPLIED ***

***** NEXT SHIPMENT: FEB 6 2008 *****

Method: Luminex/Flow

***** SERUM NO. 941 ***** SERUM NO. 942 *****

	SERUM NO. 941							SERUM NO. 942							METHOD			
	%	%	A 6	A 2	A 9	A 4	A 8	A 4	A 1	%	%	A 2	A 8	A 9		B 7	B 7	B 8
Berka,Noured	47	87	+	+	+					43	100	+	+					(4)
Dunn,Dale Dr	17	25	+				+			40	100	+						(4)
Eckels/CPMC,	46	???	+	+	+			+	+	44	???	+	+	+				(4)
Fotino,Maril	50	13	+	+						43	96	+						(4)
Hahn,Amy B.	41	78	+	+	+					53	100	+	+	+	+		+	(4)
Klein,Jon MD	53	???	+	+	+	+				58	???	+	+	+	+	+	+	B27
Mah,Helen	29	78	+	+	+					33	100	+	+	+				(4)
McAlack-Bala	38	100	+	+	+					45	100	+	+	+				(4)
Paik,Young K	60	45				+	+			56	100	+						A24,A28,B17
Schroeder,M.	16	???						+	B57	40	100	+						A1
Smith/Baylor	0	0								36	???	+						(4)
Smith/MI,	24	???	+	+	+					43	???	+	+	+				(4)
Stewart,Dod	12	100	+							38	100	+	+	+				(4)
Suciu-Foca,N	57	57	+	+	+					62	82	+	+	+				(4)
Ward,William	60	90	+	+	+				A25	67	100	+	+	+	+	+		B81

***** SERUM NO. 941 ***** SERUM NO. 942 *****

*** 15 TYPING LABS ***

A68	80%	0.980
A2	73%	0.922
A69	67%	1.000
A28	13%	1.000
A34	13%	1.000
A24	13%	0.900
A1	13%	0.643
A23	7%	1.000
A25	7%	1.000
A29	7%	1.000
A33	7%	1.000
B38	7%	1.000
B57	7%	1.000

*** 15 TYPING LABS ***

A2	100%	0.995
A68	67%	0.973
A69	60%	1.000
B57	20%	1.000
B7	13%	1.000
B58	13%	1.000
A28	7%	1.000
B17	7%	1.000
B81	7%	1.000
A24	7%	0.789
A1	7%	0.667
B27	7%	0.500

*** 15 LABORATORIES REPLIED ***

***** NEXT SHIPMENT: FEB 6 2008 *****

Method: Antiglobulin

***** SERUM NO. 941 ***** SERUM NO. 942 *****

	SERUM NO. 941										SERUM NO. 942										METHOD				
	%	%	A	A	A	A	A	A	A	A	%	%	A	B	A	A	B	A	A	A		A			
	POS	8'S	2	8	9	4	3	4	3	6	2	2	POS	8'S	2	7	9	8	8	4	3	8	7	4	
Choo, Yoon MD	43	0	+	+	+								50	22	+	+	+	+	+						(5)
Esteves-Kond	71	6	+	+	+	+		+	+	+			79	56	+	+	+	+		+	+				(5)
Hahn, Amy B.	15	???	+	+	+			+	+	+	+	+	18	???	+	+	+	+	+	+			+	+	B81 (5)
Holdsworth, R	63	???	+			+	+	+	+	+	+	+	48	???	+	+		+	+	+	+				(5)
McAlack, Robe	21	100	+	+	+	+	+	+	+		+		17	100	+	+	+	+	+	+	+			+	(5)
Paik, Young K	9	0	+									+	11	100	+	+						+			(5)
Phelan, Donna	64	???	+	+	+	+	+	+	+	+	+	+	75	???	+	+	+	+	+	+	+				A26 (5)
Stewart, Dod	12	100		+									38	100	+		+	+							A30, A31, A25 (5)
Sullivan, Kar	58	???	+	+	+	+	+				+		53	???	+	+	+	+	+			+	+		B27 (5)

***** SERUM NO. 941 ***** SERUM NO. 942 *****

*** 9 TYPING LABS ***

A2	89%	0.890
A68	78%	0.902
A69	67%	0.889
A24	56%	0.895
A23	56%	0.886
A33	56%	0.886
A34	56%	0.886
A66	44%	0.886
A25	44%	0.873
A28	33%	1.000
A26	33%	0.868
A1	11%	1.000

*** 9 TYPING LABS ***

A2	100%	0.878
B57	89%	0.826
A68	78%	0.837
A69	78%	0.833
B58	67%	0.815
A23	56%	0.812
A24	56%	0.806
A28	33%	1.000
A74	22%	1.000
B7	22%	1.000
B27	11%	1.000
B81	11%	1.000
A25	11%	0.803
A30	11%	0.803
A31	11%	0.803

*** 9 LABORATORIES REPLIED ***

***** NEXT SHIPMENT: FEB 6 2008 *****

Method: Elisa

	% POS 8'S		SERUM NO. 943										SERUM NO. 944										METHOD
	%	POS	A	A	A	B	B	A	A	A	%	POS	A	A	A	A	A	A	A	A	A		
Alvarez & Ca	71	0	+								A33	90	???									???	(3)
Berka, Noured	52	100	+	+	+		+					48	75	+	+	+		+					(4)
Burger, Joe	15	100	+	+	+	+	+	+			CW3	40	100	+	+	+	+	+	+	+	+	B75, B35	(3)
Cantwell, Lin	???	???	+	+	+	+	+	+			CW10, CW9, B46	???	???	+	+	+	+	+	+	+	+	B75, B63	(3)
Chongkolwata	39	97	+									9	100								+		(1)
Choo, Yoon MD	78	20	+	+	+		+	+			A32, A26	73	50	+	+	+	+	+	+			A32, A23	(5)
Cohen, Jacque	95	???	+	+	+	+	+	+		+	A31	85	???	+	+	+	+	+	+	+	+	()	
Darke, Christ	???	???	+	+	+	+	+	+		+	2403, B46, CW9	???	???	+	+	+	+	+	+	+	+	B35, B53	(3)
Dunckley, Hea	46	91	+	+	+							17	60	+	+	+							(1)
Dunk, Arthur	40	100	+									50	46	+	+	+			+				(6)
Dunn, Dale Dr	40	100	+									17	63	+		+					+		(4)
Dunn, Paul Ph	42	100	+	+								15	100	+									(2)
Eckels/CPMC,	63	???	+	+	+		+			+	A25, B13, B41>	63	???	+	+	+	+	+	+	+	+	B27, B38, B39	(4)
Ellis, Thomas	100	???	+						+	+	B17, A9, A33, B7	91	???	+		+					+	A10, A80, A11>	(3)
Esteves-Kond	99	100	+	+	+	+				+	CW10, BW6	98	57	+	+	+	+	+	+		+	A23, B57, CW9	(3)
Fotino, Maril	43	100	+									13	43	+									(4)
Gautreaux, Mi	100	???	+	+	+	+	+	+			CW10, CW9, B75	86	???	+	+		+	+			+	B35, B75, B63>	(3)
Hahn, Amy B.	60	90	+	+	+		+	+				64	95	+	+	+	+	+	+				(4)
Hamdi, Nuha D	40	64	+	+	+		+				B39, B46	89	100	+	+	+	+	+	+	+	+	CW5, A36, B27>	(3)
Han, Hoon Dr	91	???	+	+	+	+			+		B51, B52, B35	84	???	+	+		+	+	+	+	+	B35	(3)
Harville/ACH	???	???	+	+	+	+			+	+	A31, A74, A11>	???	???	+	+	+	+	+	+	+	+	A11	(3)
Hidajat, Mela	47	100	+	+								10	100	+									(1)
Hogan, Patric	32	95	+									8	80	+									(1)
Holdsworth, R	98	???									???	100	???									???	(5)
Israel, Shosh	40	100	+	+	+							50	100	+	+	+							(2)
Klein, Jon MD	95	???	+	+	+	+		+	+	+	A33, A25, A32	78	???	+	+	+	+	+	+	+	+	A32	(4)
Klein, Tirza	80	100	+	+	+	+	+	+		+	A25, A32, B53>	92	100	+	+		+		+		+	A36, A1, B49, B57>	(3)
Kopko, Patric	39	100	+	+								9	67								+		(1)
Lardy, N.M. D	55	100	+							+		55	63		+				+	+	+		(2)
MacCann, Eile	100	???	+	+	+	+	+			+		98	???	+	+	+	+	+	+	+	+	B57, B58	(3)
Mah, Helen	31	100	+	+	+							49	100	+	+	+	+	+	+	+	+		(4)
McAlack, Robe	55	100	+	+	+	+	+		+	+	A74	42	100	+	+	+	+	+	+	+	+		(5)
McAlack-Bala	45	100	+	+	+							10	100	+		+							(4)
McCluskey, Ja	38	100	+									6	100								+		(6)
Moore, S. Brea	66	???	+	+	+	+	+	+		+	B70	57	???	+	+	+	+	+	+	+	+	B75	(3)
Ozawa, Mikki	???	???	+	+	+	+	+	+		+	B77, B46	???	???	+	+	+	+	+	+	+	+	B63, B75	(3)
Paik, Young K	74	68	+							+	A9, B17	71	91		+	+				+	+	A10, B17	(4)
Pais, Maria L	14	???	+									4	???								???		(1)
Phelan, Donna	48	???	+	+	+	+		+	+		A31, A32, A33>	56	???	+	+	+		+	+	+	+	A11, A30	(3)
Pidwell, Dian	32	100	+	+								16	100	+	+					+			(2)
Rosen-Bronso	99	100	+	+	+	+	+		+		A74, A66, A11	94	100	+	+	+		+	+	+	+	B51, B52	(3)
Sage, Deborah	95	???	+	+	+	+	+		+	+	A25, A11, B75	95	???	+	+	+	+	+	+	+	+	A11	(3)
Schroeder, M.	24	???	+								B51, B76	19	???	+								A1, B71, B73	(4)
Smith/Baylor	23	???	+	+								22	???	+			+	+					(4)
Smith/MI,	40	???	+	+	+							33	???	+	+	+							(4)
Steinberg, Ka	19	9	+									0	0										(1)
Stewart, Dod	38	100	+	+								10	100	+		+		+					(4)
Suciu-Foca, N	58	90	+	+	+							14	86	+		+							(1)
Sullivan, Kar	???	???	+	+	+		+			+	B17, B53, B63>	???	???		+		+	+	+	+	+	A11, A10	(3)
Tagliere, Jac	43	100	+									34	100	+		+							(2)
Tbakhi, Abdel	43	100	+							+		57	100	+		+					+	B17	()
Turner, E.V.	40	100	+									20	88	+		+							(1)
Vaidya, Smita	96	???								???		92	???		+		+					10C, A11, 5CREG	(6)

*** 57 TYPING LABS ***

A2	96%	0.953
A68	65%	0.931
A69	53%	0.971
A24	35%	0.974
B57	33%	1.000
B58	28%	1.000
A23	19%	0.965
A30	19%	0.960
A3	14%	1.000
A28	11%	0.905
A11	9%	1.000
A33	9%	0.952
A31	9%	0.951
A74	9%	0.951
A25	7%	1.000
B17	7%	1.000
B46	7%	1.000
A32	7%	0.951
CW9	5%	1.000
CW10	5%	1.000
???	4%	1.000
A9	4%	1.000
B35	4%	1.000
B51	4%	1.000
B53	4%	1.000
B75	4%	1.000

*** 57 TYPING LABS ***

A68	75%	0.984
A2	67%	0.804
A69	54%	0.988
A33	53%	0.952
A34	47%	0.977
A25	40%	0.986
A26	40%	0.963
A66	37%	0.986
A28	18%	1.000
A24	16%	0.917
A11	12%	0.980
B35	9%	1.000
B63	9%	1.000
B75	9%	1.000
B57	7%	1.000
???	5%	1.000
A36	5%	1.000
A10	5%	0.882
B27	4%	1.000
B62	4%	1.000
B17	4%	0.857
A1	4%	0.750
A32	4%	0.750
A23	4%	0.571

Methods:

- (1) - NIH std
- (2) - NIH ext
- (3) - Luminex/Flow
- (4) - Antiglobulin
- (5) - Elisa
- (6) - Other

*** 57 LABORATORIES REPLIED ***

***** NEXT SHIPMENT: FEB 6 2008 *****

Method: All

***** SERUM NO. 943 ***** SERUM NO. 944 *****

*** 9 TYPING LABS ***

A2	100%	0.902
A69	33%	1.000
A68	33%	0.700

*** 9 TYPING LABS ***

A68	56%	0.960
A69	33%	1.000
A28	22%	1.000
???	11%	1.000
A2	11%	0.174

*** 9 LABORATORIES REPLIED ***

Method: NIH-std

***** SERUM NO. 943 ***** SERUM NO. 944 *****

*** 6 TYPING LABS ***

A2	100%	0.988
A68	67%	0.833
A69	33%	1.000
A28	17%	0.714

*** 6 TYPING LABS ***

A68	83%	1.000
A69	50%	1.000
A2	50%	0.531
A25	33%	1.000
A28	17%	1.000

*** 6 LABORATORIES REPLIED ***

***** NEXT SHIPMENT: FEB 6 2008 *****

Method: NIH-ext

	% POS 8'S		A	A	A	B	B	A	A	A	% POS 8'S		A	A	A	A	A	A	A	A	A	METHOD		
	2	8	2	8	4	9	7	8	0	3	3	1	2	8	3	4	6	5	6	9	4		1	
Alvarez & Ca	71	0	+										A33	90	???							???	(F-3)	
Burger,Joe	15	100	+	+	+	+	+	+					CW3	40	100	+	+	+	+	+	+	+	B75,B35	(L-3)
Cantwell,Lin	???	???	+	+	+	+	+	+	+				CW10,CW9,B46	???	???	+	+	+	+	+	+	+	B75,B63	(L-3)
Darke,Christ	???	???	+	+	+	+	+	+			+		2403,B46,CW9	???	???	+	+	+	+	+	+	+	B35,B53	(L-3)
Dunn,Paul Ph	80	???	+	+	+	+	+	+			+		A33,B47,5CREG	89	???	+	+	+	+	+	+	+	A30	(L-3)
Eckels/CPMC,	99	???	+		+				+	+	+	+	A25,A26,A29>	94	???	+	+	+	+	+	+	+	A1,A3,A30	(LF-3)
Ellis,Thomas	100	???	+						+				A28,B17,A9,A33>	91	???	+	+					+	A28,A10,A80>	(LF-3)
Esteves-Kond	99	100	+	+	+	+					+		CW10,BW6	98	57	+	+	+		+	+	+	A23,B57,CW9	(F-3)
Fotino,Maril	80	???	+	+	+	+	+	+	+				B75,3303	71	???	+	+	+	+	+	+	+	3303	(L-3)
Gautreaux,Mi	100	???	+	+	+	+	+	+					CW10,CW9,B75	86	???	+	+	+	+	+			B35,B75,B63>	(L-3)
Hamdi,Nuha D	40	64	+	+				+					B39,B46	89	100	+	+	+	+	+	+		CW5,A36,B27>	(L-3)
Han,Hoon Dr	91	???	+	+	+	+					+		B51,B52,B35	84	???	+	+	+	+	+	+		B35	(L-3)
Harville/ACH	???	???	+		+	+			+		+	+	A31,A74,A80	???	???	+	+	+	+	+	+	+		(F-3)
Klein,Tirza	80	100	+	+	+		+	+			+		A25,A32,B53>	92	100	+	+	+		+		+	A36,A1,B49,B57>	(L-3)
MacCann,Eile	100	???	+	+	+		+	+			+			98	???	+	+	+	+	+	+	+	B57,B58	(L-3)
McAlack-Bala	100	100	+	+					+	+			B18,B7,A31,B65	84	100	+	+	+					B18,6602,6601>	(L-3)
Moore,S.Brea	66	???	+	+	+	+	+	+	+	+			B70	57	???	+	+	+	+	+	+	+	B75	(L-3)
Ozawa,Mikki	???	???	+	+	+	+	+	+	+	+			B77,B46	???	???	+	+	+	+	+	+	+	B63,B75	(L-3)
Phelan,Donna	48	???	+	+	+	+	+	+	+	+	+		A31,A32,A33>	56	???	+	+	+	+	+	+	+	A30	(L-3)
Pidwell,Dian	???	???	+	+	+	+	+	+			+		CW9,CW10,A74	???	???	+	+	+	+	+	+	+	B75,B78	(F-3)
Rosen-Bronso	99	100	+	+	+	+	+	+			+	+	A74,A66	94	100	+	+	+	+	+	+	+	B51,B52	(F-3)
Sage,Deborah	95	???	+	+	+	+	+	+	+	+	+		A25,B75	95	???	+	+	+	+	+	+	+		(L-3)
Smith/Baylor	93	???	+	+	+	+	+	+	+	+	+		A31,A32	89	???	+	+	+	+	+	+	+	B8	(L-3)
Smith/MI,	80	???	+	+	+	+	+	+	+	+	+		B46,4005	89	???	+	+	+	+	+	+	+	B75,B63	(L-3)
Suciu-Foca,N	???	100	+	+	+	+	+	+	+	+			CW10,CW9	???	100	+	+	+	+	+	+	+		(L-3)
Sullivan,Kar	???	???	+	+		+	+	+					A28,B17,B53>	???	???	+	+	+	+	+	+	+	A10,A28	(L-3)
Turner,E.V.	40	100	+	+		+	+							20	88	+	+					+		(L-3)
Ward,William	95	???	+	+	+	+	+	+	+	+	+		B77	73	???	+	+	+	+	+	+	+	B75,B77	(LF-3)
Yu_Neng/ARC,	20	???	+	+	+	+	+	+	+	+	+		A31	25	???	+	+	+	+	+	+	+	B62,B63	(L-3)
Yu_Neng/UMMM	100	???	+	+	+	+	+	+	+	+	+		A31	70	???	+	+	+	+	+	+	+	B62,B63	(L-3)
Zachary,Andr	100	???	+		+						+		A28,A33,A34>	100	???	+	+	+	+		+	+	A28	(L-3)

(3) - L-Luminex, F-Flow

*** 31 TYPING LABS ***

A2	100%	0.966
A68	87%	0.975
A24	81%	0.975
A69	74%	0.937
B57	68%	1.000
B58	61%	1.000
A30	52%	0.963
A3	39%	1.000
A23	32%	0.962
A11	26%	1.000
A31	23%	0.957
B46	16%	1.000
CW10	16%	1.000
CW9	16%	1.000
A33	16%	0.951
A74	16%	0.951
A25	10%	1.000
A28	10%	1.000
B17	10%	1.000
B75	10%	1.000
A32	10%	0.949
B7	6%	1.000
B35	6%	1.000
B53	6%	1.000
B77	6%	1.000
2403	3%	1.000
3303	3%	1.000
4005	3%	1.000
5CREG	3%	1.000
A9	3%	1.000
A26	3%	1.000
A29	3%	1.000
A34	3%	1.000
A66	3%	1.000
A80	3%	1.000
BW6	3%	1.000
B18	3%	1.000
B39	3%	1.000
B47	3%	1.000
B51	3%	1.000
B52	3%	1.000
B63	3%	1.000
B65	3%	1.000
B70	3%	1.000
B71	3%	1.000
CW3	3%	1.000

*** 31 TYPING LABS ***

A2	97%	0.992
A33	84%	1.000
A68	84%	0.989
A34	81%	0.986
A66	77%	0.986
A25	77%	0.985
A26	74%	0.986
A69	65%	0.985
A24	35%	0.982
A11	29%	0.980
B75	26%	1.000
B63	19%	1.000
B35	16%	1.000
B57	13%	1.000
A28	10%	1.000
A36	10%	1.000
A30	10%	0.978
A1	6%	1.000
A10	6%	1.000
B18	6%	1.000
B62	6%	1.000
3303	3%	1.000
6601	3%	1.000
6602	3%	1.000
???	3%	1.000
A3	3%	1.000
A80	3%	1.000
B8	3%	1.000
B27	3%	1.000
B49	3%	1.000
B51	3%	1.000
B52	3%	1.000
B53	3%	1.000
B58	3%	1.000
B65	3%	1.000
B77	3%	1.000
B78	3%	1.000
CW9	3%	1.000
CW5	3%	1.000
A23	3%	0.667

*** 31 LABORATORIES REPLIED ***

***** NEXT SHIPMENT: FEB 6 2008 *****

	% POS 8'S		A A B A							A A A A A A A A					METHOD			
	2	8	6	6	5	3	5	2	8	9	4	2	3	5		6	6	8
Berka,Noured	52	100	+	+	+	+			48	75	+	+	+	+				(4)
Dunn,Dale Dr	40	100	+						17	63	+	+				+		(4)
Eckels/CPMC,	63	???	+	+	+	+	+		63	???	+	+	+	+	+	+		B27,B38,B39 (4)
Fotino,Maril	43	100	+						13	43	+							(4)
Hahn,Amy B.	60	90	+	+	+	+			64	95	+	+	+	+	+			B58 (4)
Klein,Jon MD	95	???	+	+		+	+		78	???	+	+	+	+	+	+		A23,A24,A33,A30,A32 (4)
Mah,Helen	31	100	+	+	+				49	100	+	+	+	+	+			(4)
McAlack-Bala	45	100	+	+	+				10	100	+	+						(4)
Paik,Young K	74	68	+						71	91			+	+			+	A9,A28,B17 (4)
Schroeder,M.	24	???	+						19	???	+							B51,B76 (4)
Smith/Baylor	23	???	+	+					22	???	+		+	+				(4)
Smith/MI,	40	???	+	+	+				33	???	+	+	+					(4)
Stewart,Dod	38	100	+	+					10	100	+	+	+					(4)
Suciu-Foca,N	64	89	+	+	+				75	96	+	+	+	+	+			(4)
Ward,William	60	100	+	+	+				77	100	+	+	+	+	+			(4)

*** 15 TYPING LABS ***

A2	100%	0.975
A68	73%	0.927
A69	60%	1.000
B57	20%	1.000
A3	13%	1.000
A25	13%	1.000
A9	7%	1.000
A23	7%	1.000
A24	7%	1.000
A28	7%	1.000
A30	7%	1.000
A32	7%	1.000
A33	7%	1.000
B13	7%	1.000
B17	7%	1.000
B41	7%	1.000
B51	7%	1.000
B54	7%	1.000
B56	7%	1.000
B58	7%	1.000
B76	7%	1.000

*** 15 TYPING LABS ***

A68	93%	0.983
A69	73%	1.000
A2	60%	0.925
A34	60%	0.804
A33	53%	0.875
A25	27%	0.724
A26	20%	1.000
A28	13%	1.000
A66	13%	1.000
A32	7%	1.000
B27	7%	1.000
B38	7%	1.000
B39	7%	1.000
B71	7%	1.000
B73	7%	1.000
A10	7%	0.867
B17	7%	0.833
A24	7%	0.737
A1	7%	0.667

*** 15 LABORATORIES REPLIED ***

***** NEXT SHIPMENT: FEB 6 2008 *****

Method: Antiglobulin

***** SERUM NO. 943 ***** SERUM NO. 944 *****

	% POS 8'S		SERUM NO. 943										SERUM NO. 944										METHOD																												
	%	POS	A	B	A	B	A	A	A	B	B	A	A	A	A	A	A	A	A	B																															
Choo, Yoon MD	78	20	+	+	+	+	+																A32, A26	73	50	+	+	+	+	+	+															A32, A23	(5)				
Esteves-Kond	100	67	+	+	+	+		+	+	+															95	80	+	+	+	+	+																A23, A24, B57, A3	(5)			
Hahn, Amy B.	48	???	+	+	+	+	+					+	+												41	???	+	+		+		+	+	+	+	+												A10, B35	(5)		
Holdsworth, R	98	???																							100	???																						???	(5)		
McAlack, Robe	55	100	+	+	+	+		+	+	+															42	100	+	+	+	+	+	+	+	+	+														A74	(5)	
Paik, Young K	40	100	+		+								+												38	50	+	+																				A28	(5)		
Phelan, Donna	98	???	+	+		+		+	+	+															62	???	+	+	+	+	+		+	+	+														A31, A32, A33>	(5)	
Stewart, Dod	38	100	+	+																					10	100			+	+	+																		A10, B63, B71	(5)	
Sullivan, Kar	65	???	+	+	+	+	+						+												60	???	+	+	+	+	+	+																		A28, B51, B70>	(5)

***** SERUM NO. 943 ***** SERUM NO. 944 *****

*** 9 TYPING LABS ***

A2	89%	0.963
A68	78%	0.980
B57	67%	1.000
A69	67%	0.978
B58	33%	1.000
A24	33%	0.978
A23	33%	0.977
A30	33%	0.977
A28	22%	1.000
B63	22%	1.000
B71	22%	1.000
A32	22%	0.976
A74	22%	0.976
???	11%	1.000
B46	11%	1.000
B51	11%	1.000
B62	11%	1.000
B70	11%	1.000
B72	11%	1.000
B75	11%	1.000
A31	11%	0.976
A33	11%	0.976
A26	11%	0.667

*** 9 TYPING LABS ***

A2	78%	0.752
A33	78%	0.707
A68	67%	0.721
A34	67%	0.692
A69	56%	1.000
A26	44%	0.680
A25	44%	0.671
A66	44%	0.671
A28	33%	1.000
A10	22%	1.000
A23	22%	0.714
B5	22%	0.662
B35	22%	0.662
???	11%	1.000
A3	11%	1.000
A24	11%	1.000
B57	11%	1.000
B63	11%	1.000
B71	11%	1.000
B15	11%	0.657
A32	11%	0.500

*** 9 LABORATORIES REPLIED ***

***** NEXT SHIPMENT: FEB 6 2008 *****

Method: Elisa

INVESTIGATOR		DNA EXTRACT #401 (Caucasian)		B1	B2	C1	C2	method
CTR	NAME	A1	A2					
5488	Adams, Sharon	*010101	*2448N	*080101		*0701/06/18		SBT, RVSSO
2300	Allegheny Ge	*01	*24	*08		*07		SSP
745	Anthony Nola	*010101	*2448N	*080101		*0701		SSO, SSP, SEQ
4345	Blasczyk, Rai	*0101/01N/04N/22N	*2448N	*0801/19N		*0701/06/18		PCR-SBT
5106	Brown, Colin	*0101/04N	*2448N	*0801/19N		*0701/05/06/16/18/20/21		PCR-SBT, RSSO
785	Chan, Soh Ha	*0101/04N/11N/14+	*2402/09N/11N/27+	*0801/08N/19N		*0701/06/18		SBT
3224	Chen, Dongfen	*0101	*2448N	*0801		*0701/06/18		SBT, SSO, SSP
3966	Chongolwatan	*01	*24	*08		*07		PCR-SSP
3625	Darke, Christ	*01	*24	*08		*0701/05/08/27		PCR-SSP
1108	Davis, Mary	*0101	*2402	*0801		*0701		SSO, SSP
5891	Du, Keming	*0101/04N/09/10	*2448N	*0801/08N/05	*0801/08N/05			PCR-SSO
3186	Dunckley, Hea	*01	*24	*0801		*07		SSP, SBT
3766	Dunn, Paul	*01	*24	*08		*07		PCR-SSO, SSP
3428	Eckels/Utah	*01	*24	*08				SSOP
4251	Ellis, Thomas	*0101	*2448N	*0801	*0801	*0701/06/18	*0701/06/18	PCR-SSO, SEQ
762	Fischer&Mayr	*0101	*2448N	*0801		*0701/06		RSSO, SBTex1-3
729	Fotino, Maril	*0101	*2448N	*0801		*0701/21/22/24/26/30/35/36/40/44		SSP, SSO
1461	Hidajat, Mela	*0101	*2402/48N	*0801/28-31		*0701		SSO, SSP
615	Holdsworth, R	*0101/01N/04N/22N	*2448N	*0801/19N		*0701/06/18		SBT
2344	Hurley&Hartz	*01010101/010102N+	*2448N	*080101/19N	*080101/19N	*070101/0102/0109+	*070101/0102+	SBT
3261	Iwaki, Yui	*01	*24	*08		*07		SSP
797	Kato, Shunich	*0101/01N/40N+	*2402/05/09N+	*0801		*0701/06/18		SSO, SBT
87	Land, Geoff	*0101	*2448N	*0801	*0801	*0701	*0701	SBT, SSP
278	Lee, Jar-How	*0101/11N/16N/18N	*2448N	*0801/22/24/27-31		*0701/21/24/30/35/36		SSP, RVSSOP
640	Lee, Kyung Wh	*0101/04N/22N	*2448N	*0801/19N		*0701/06/18		PCR-SBT
9916	McIntyre, Joh	*01010101	*2448N	*080101		*0701		SBT, SSP, SSO
8021	Montague, Bri	*0101/04N/06/09+	*2402/03/07/09+	*0801-03/05-08N+		*0701/05-07+		PCR-SSP
5323	Murad, Shahna	*01	*24	*08		*07		
8022	Olerup, Olle	*0101	*2448N	*0801		*0701		SSP
8000	Pahl, Armin	*01	*24	*08				SSO
794	Partanen, Juk	*0101	*2448N	*0801		*0701		SSO, SBT, SSP
3648	Pereira, Noem	*01	*24	*08		*07		RVPCR-SSO
2400	Phelan, Donna	*0101	*2448N	*0801		*0701		RVSSO, SSP
16	Pidwell, Dian	*010101	*2448N	*080101		*070101/18		P-RVSSOP, SBT
4689	Rajczyk&Gyodi	*01	*24	*08		*07		PCR-SSP, SSO
3753	Reed, Elaine	*0101	*2448N	*0801		*0701/06/18	*0701/06/18	SBT, SSO
782	Richard, Luc	*01	*24	*08	*08	*07	*07	
1694	Sauer, Norber	*01	*24	*08		*07		SSP
3545	Scornik, Juan	*0101	*2448N	*0801		*0701/06/18		SSOP, SBT
5096	Seoul Red Cr	*01	*24	*08	*08			RVSSOP
8042	Shainberg, Br	*0101	*2448N	*0801	*0801	*0701	*0701	
5133	Smith/Baylor	*01	*24	*08		*07		PCR-SSO
735	Smith/MI	*01	*24	*08		*07		RVSSOP
740	Snider, Denis	*0101	*2448N	*0801		*0701		SSP
746	Stamm, Luz	*0101	*2402/48N	*0801		*0701		RVSSOP, SSP
13	Tagliere, Jac	*0101	*2448N	*0801		*0701		SSP
4021	Trachtenberg	*01	*24	*08		*07		RVSSOP
5462	Turner, E. V.	*0101	*2448N	*0801		*0701		SSP, SSO, SEQ
3135	Wernet, Peter	*0101/01N	*2448N	*0801		*0701/06/18		SBT, SSP, SSO

INVESTIGATOR	DNA EXTRACT #402 (Caucasian)		B1	B2	C1	C2	method
CTR NAME	A1	A2					
5488 Adams, Sharon	*2421	*310102	*070201	*4901	*07	*07	SBT, RVSSO
2300 Allegheny Ge	*24	*31	*07	*49	*07		SSP
745 Anthony Nola	*2421	*310102	*070201	*4901	*0701	*0702	SSO, SSP, SBT
4345 Blasczyk, Rai	*2421	*3101/14N	*0702/44/49N	*4901	*0701/06/18/19	*0702/27	PCR-SBT
5106 Brown, Colin	*2421	*3101/14N	*0702/44/49N	*4901	*07		PCR-SBT, RSSO
785 Chan, Soh Ha	*2421	*3101/05	*0702/33/35/36/42+	*4901/*5001	*0701/06/18/19/30	*0702/15/27	SBT
3224 Chen, Dongfen	*2421	*3101	*0702	*4901	*0701	*0702	SBT, SSO, SSP
3966 Chongolwatan	*24	*3101	*07	*4901	*0701/06	*0702	PCR-SSP
3625 Darke, Christ	*24	*31	*07	*4901	*0701	*0702	PCR-SSP
1108 Davis, Mary	*2402	*3101	*0702	*4901	*0701	*0702	SSO, SSP
5891 Du, Keming	*2421	*3101	*0702/21	*4901			PCR-SSO
3186 Dunckley, Hea	*24	*31	*07	*49	*07		SSP
3766 Dunn, Paul	*24	*31	*07	*4901	*07	*07	PCR-SSO, SSP
3428 Eckels/Utah	*24	*31	*07	*4901			SSOP
4251 Ellis, Thomas	*2421	*3101	*0702	*4901	*0701/06/18/19	*0702/27	PCR-SSO, SEQ
762 Fischer&Mayr	*2421	*3101	*0702	*4901	*0701/06/18	*0702	RSSO, SBTex1-3
729 Fotino, Maril	*2421	*3101	*0702/36	*4901/04/05	*0701/21/22/24+	*0702/23/25/29+	SSP, SSO
1461 Hidajat, Mela	*2421	*3101/14N	*0702/51	*4901	*0701	*0702	SSO, SSP
615 Holdsworth, R	*2421	*3101/14N	*0702/44/49N/58	*4901	*0701/06+// *0719	*0702// *0727	SBT
2344 Hurley&Hartz	*2421	*310102/14N	*070201/0206/44+	*4901	*070101/0102/0109+	*07020102+	SBT
3261 Iwaki, Yui	*24	*31	*07	*49	*07	*07	SSP
797 Kato, Shunich	*2421	*3101	*0702	*4901	*0701/02/06+		SSO, SBT
87 Land, Geoff	*2421/02/05/09N	*3101	*0702	*4901	*0701	*0702	SBT, SSP
278 Lee, Jar-How	*2421	*3101/12/14N/15	*0702/35/39/44/46+	*4901	*0701/19/21/24+	*0702/19/23/25+	SSP, RVSSOP
640 Lee, Kyung Wh	*2421	*3101/14N	*0702/44/49N/58	*4901	*0701/06/18	*0702	PCR-SBT
9916 McIntyre, Joh	*2421	*310102	*070201	*4901	*0701	*0702	SBT, SSP, SSO
8021 Montague, Bri	*2421/29	*3101/02/05-07+	*0702/04/10/15/21+	*4901	*0701-03/05+		PCR-SSP
5323 Murad, Shahna	*24	*31	*07	*4901	*07		
8022 Olerup, Olle	*2421	*3101	*0702	*4901	*0701	*0702	SSP
8000 Pahl, Armin	*24	*31	*07	*49			SSO
794 Partanen, Juk	*2421	*3101	*0702	*4901	*0701	*0702	SSO, SBT, SSP
3648 Pereira, Noem	*24	*31	*07	*49	*07		RVPCR-SSO
2400 Phelan, Donna	*2421	*3101	*0702	*4901	*0701	*0702	RVSSO, SSP
16 Pidwell, Dian	*2421	*310102	*070201	*4901	*070101/18// *0719	*070201// *0727	P-RVSSOP, SBT
4689 Rajczy&Gyodi	*24	*31	*07	*4901	*07		PCR-SSP, SSO
3753 Reed, Elaine	*2421	*3101	*0702	*4901	*0701/06/18/27	*0702/19	SBT, SSO
782 Richard, Luc	*24	*31	*07	*49	*07	*07	
1694 Sauer, Norber	*24	*31	*07	*49	*07		SSP
3545 Scornik, Juan	*2402	*3101	*0702	*4901	*0701/06/18	*0702	SSOP, SBT
5096 Seoul Red Cr	*24	*31	*07	*49			RVSSOP
8042 Shainberg, Br	*2421	*3101	*0702	*4901	*0701	*0702	
5133 Smith/Baylor	*24	*31	*07	*49	*07		PCR-SSO
735 Smith/MI	*24	*31	*07	*49	*07		RVSSOP
740 Snider, Denis	*2421	*3101	*0702	*4901	*0701	*0702	SSP
746 Stamm, Luz	*2421	*3101	*0702	*4901	*0701	*0702	RVSSOP, SSP
13 Tagliere, Jac	*2421	*310102	*0702	*4901	*0701	*0702	SSP
4021 Trachtenberg	*24	*31	*07	*4901	*07		RVSSOP
5462 Turner, E. V.	*2421	*3101	*0702	*4901	*07		SSP, SSO, SEQ
3135 Wernet, Peter	*2421	*3101	*0702	*4901	*0701/06/18	*0702	SBT, SSP, SSO

CTR	INVESTIGATOR NAME	DNA EXTRACT #403 (Caucasian)		B1	B2	C1	C2	method
		A1	A2					
5488	Adams, Sharon	*010101/14	*240201/46	*150101	*3541	*030301/20N	*040101/09N	SBT, RVSSO
2300	Allegheny Ge	NT						
745	Anthony Nola	*010101	*24020101	*1501	*3541	*0303	*0401	SSO, SSP, SBT
4345	Blasczyk, Rai	*0101/01N/04N/22N	*2402/02L/09N/11N+	*1501/01N/*9502/04	*3541	*0303/20N	*0401/09N	PCR-SBT
5106	Brown, Colin	*0101/04N	*2402	*1501/*9502/04	*3541	*0303/11/13/20N+	*04	PCR-SBT, RSSO
785	Chan, Soh Ha	*0101/04N/14/15N	*2402/09N/11N/36N+	*1501/*9502/04/11N	*3541	*0303/20N	*0401/09N	SBT
3224	Chen, Dongfen	*0101	*2402	*1501	*3541	*0303/20N	*0401/09N	SBT, SSO, SSP
3966	Chongolwatan	*01	*24	*1501	*35	*0303	*0401	PCR-SSP
3625	Darke, Christ	*01	*24	*15(B62)	*35	*0303	*0401	PCR-SSP
1108	Davis, Mary	*0101	*2402	*1501	*3541	*0303	*0401	SSO, SBT, SSP
5891	Du, Keming	*0101/04N/09	*2402/09N/11N/15	*1501/05/20	*3501/07/23			PCR-SSO
3186	Dunckley, Hea	*01	*24	*1501	*35	*0303/11-13/18+	*04	SSP, SBT
3766	Dunn, Paul	*01	*24	*15	*35	*03	*04	PCR-SSO, SSP
3428	Eckels/Utah	*01	*24	*15	*35			SSOP
4251	Ellis, Thomas	*0101	*2402	*1501	*3541	*0303/20N	*0401/09N	PCR-SSO, SEQ
762	Fischer&Mayr	*0101	*2402	*1501	*3541	*0303	*0401/09N	RSSO, SBTex1-3
729	Fotino, Maril	*0101	*2402	*1501	*3541	*0303-05/20N/22Q+	*0401/20	SSP, SSO
1461	Hidajat, Mela	*0101	*2402/63/66/68	*1501/*9504/13/22	*3541	*0303/30	*0401	SSO, SSP
615	Holdsworth, R	*0101/01N/04N/22N	*2402/09N/11N/40N+	*1501/01N	*3541	*0303/20N	*0401/09N	SBT
2344	Hurley&Hartz	*01010101/010102N+	*24020101/020102L+	*15010101/010102N+	*3541	*030301/20N	*04010102/09N+	SBT
3261	Iwaki, Yui	*01	*24	*15	*35	*03	*04	SSP
797	Kato, Shunich	*0101	*2402	*1501/01N	*3541	*0303	*0401/09N	SSO, SBT
87	Land, Geoff	*0101	*2402	*1501	*3541	*0303	*0401	SBT, SSP
278	Lee, Jar-How	*0101/11N/16N/18N	*2402/53/58/63/69+	*1501/34/79N/81+	*3541	*0303/20	*0401/18-20	SSP, RVSSOP
640	Lee, Kyung Wh	*0101/04N+// *0114	*2402/09N+// *2446	*1501	*3541	*0303/20	*0401/09N	PCR-SBT
9916	McIntyre, Joh	*01010101	*24020101	*15010101	*3541	*0303/1102/30	*0401/20/24-26	SBT, SSP, SSO
8021	Montague, Bri	*0101/04N/06/09+	*2402/03/07/09+	*150101/0103-0105+	*3501-0401+	*0303/11-13/18+	*0401/03-10/12+	PCR-SSP
5323	Murad, Shahna	*01	*24	*1501	*35	*0303	*04	
8022	Olerup, Olle	*0101	*2402/38	*1501	*3541	*0303	*0401	SSP
8000	Pahl, Armin	*01	*24	*15	*35			SSO
794	Partanen, Juk	*0101	*2402	*1501	*3541	*0303	*0401	SSO, SBT, SSP
3648	Pereira, Noem	*01	*24	*15	*35	*03	*04	RVPCR-SSO
2400	Phelan, Donna	*0101	*2402	*1501	*3541	*0303	*0401	RVSSO, SSP
16	Pidwell, Dian	*010101	*240201	*150101	*3541	*030301/20N	*040101/09N	P-RVSSOP, SBT
4689	Rajczyk&Gyodi	*01	*24	*15	*35	*03	*04	PCR-SSP, SSO
3753	Reed, Elaine	*0101/14	*2402/46	*1501	*3541	*0303/20N	*0401/09N	SBT, SSO
782	Richard, Luc	*01	*24	*15	*35	*03	*04	
1694	Sauer, Norber	*01	*24	*15	*35	*03	*04	SSP
3545	Scornik, Juan	*0101	*2402	*1501	*3541	*0303/20N	*0401/09N	SSOP, SBT
5096	Seoul Red Cr	*01	*24	*15	*35			RVSSOP
8042	Shainberg, Br	*0101	*2402	*1501	*3541	*0303	*0401	
5133	Smith/Baylor	*01	*24	*15	*35	*03	*04	PCR-SSO
735	Smith/MI	*01	*24	*15	*35	*03	*04	RVSSOP
740	Snider, Denis	*0101	*2402	*1501	*3541	*0303	*0401	SSP
746	Stamm, Luz	*0101	*2402	*1501	*3541	*0303	*0401	RVSSOP, SSP
13	Tagliere, Jac	*0101	*2402	*1501	*3541	*0303	*0401	SSP
4021	Trachtenberg	*01	*24	*15/*95	*35	*03	*04	RVSSOP
5462	Turner, E.V.	*0101	*2402	*1501	*3541	*0303	*0401	SSP, SSO, SEQ
3135	Wernet, Peter	*0101/01N	*2402	*1501/01N	*3541	*0303/20N	*0401/09N	SBT, SSP, SSO

INVESTIGATOR		DNA EXTRACT #404 (Filipino)		B1	B2	C1	C2	method
CTR	NAME	A1	A2					
5488	Adams, Sharon	*110101/04	*2410/33	*2706	*5106	*0304/07	*120301/0402	SBT, RVSSO
2300	Allegheny Ge	NT						
745	Anthony Nola	*110101	*2433	*2706	*5106	*0304	*120402	SSO, SSP, SBT
4345	Blasczyk, Rai	*1101/21N	*2403/33	*2706	*5106	*0304	*1204	PCR-SBT
5106	Brown, Colin	*1101/04/21N	*2403/10/33	*2706	*5106	*0304/08/09	*1204	PCR-SBT, RSSO
785	Chan, Soh Ha	*1101/04/21N	*2403/10/33	*2706	*5106	*0304/07	*1203/04	SBT
3224	Chen, Dongfen	*1101	*2433	*2706	*5106	*0304	*1204	SBT, SSO, SSP
3966	Chongolwatan	*1101	*2403/10	*2706	*51	*0304	*12042	PCR-SSP
3625	Darke, Christ	*11	*2403/10/33	*27	*51	*0304/10	*120402	PCR-SSP
1108	Davis, Mary	*1101	*2433	*2706	*5106	*0304	*1204	SSO, SSP
5891	Du, Keming	*11	*2403/10/23	*2706/21	*5104/06			PCR-SSO
3186	Dunckley, Hea	*11	*24	*27	*51	*0304-06/08-10+	*12	SSP
3766	Dunn, Paul	*11	*2403/10/22/23/33	*2706	*5106	*03	*12	PCR-SSO, SSP
3428	Eckels/Utah	*11	*24	*2706/20/21	*5104/06			SSOP
4251	Ellis, Thomas	*1101	*2433	*2706	*5106	*0304	*1204	PCR-SSO, SEQ
762	Fischer&Mayr	*1101	*2403/33	*2706	*5106	*0304	*1204	RSSO, SBTex1-3
729	Fotino, Maril	*1101/13	*2433	*2706	*5106	*0304/23/24/28/34	*1204	SSP, SSO
1461	Hidajat, Mela	*1101/29	*2433	*2706	*5106	*0304/32/34	*1204	SSO, SSP
615	Holdsworth, R	*1101/21N	*2403/33	*2706	*5106	*0304	*1204	SBT
2344	Hurley&Hartz	*110101/21N	*240301/33	*2706	*5106	*030401/0403	*120402	SBT
3261	Iwaki, Yui	*11	*24	*27	*51	*03	*12	SSP
797	Kato, Shunich	*1101/04/12	*2410/33	*2706	*5106	*0304/07	*1203/04	SSO, SBT
87	Land, Geoff	*1101	*2433	*2706	*5106	*0304	*1204	SBT, SSP
278	Lee, Jar-How	*1101/21N/22/29	*2403	*2706	*5106	*0304/23/24	*1204	SSP, RVSSOP
640	Lee, Kyung Wh	*1101/21N/**1104	*2403/33/**2410	*2706	*5106	*0307/**0304	*1203/**1204	PCR-SBT
9916	McIntyre, Joh	*110101	*2433	*2706	*5106	*0304/32/37	*120402	SBT, SSP, SSO
8021	Montague, Bri	*1101/02/05-07+	*2402/03/07/09+	*2706/20/21	*510101-0103+	*0302/04-06/08+	*120402/05	PCR-SSP
5323	Murad, Shahna	*11		*27	*51	*03	*1203	
8022	Olerup, Olle	*1101	*2433	*2706	*5106	*0304	*1204	SSP
8000	Pahl, Armin	*11	*24	*27	*51			SSO
794	Partanen, Juk	*1101	*2433	*2706	*5106	*0304	*1204	SSO, SBT, SSP
3648	Pereira, Noem	*11	*24	*27	*51	*03	*12	RVPCR-SSO
2400	Phelan, Donna	*1101	*2433	*2706	*5106	*0304	*1204	RVSSO, SSP
16	Pidwell, Dian	*110101	*2433	*2706	*5106	*030401/**0307	*120402/**120301	P-RVSSOP, SBT
4689	Rajczyk&Gyodi	*11	*24	*2704/06	*5106	*03	*1204/05	PCR-SSP, SSO
3753	Reed, Elaine	*1101/04	*2433/10	*2706	*5106	*0304/07	*1204/03	SBT, SSO
782	Richard, Luc	*11	*24	*27	*51	*03	*12	
1694	Sauer, Norber	*11	*24	*27	*51	*03	*12	SSP
3545	Scornik, Juan	*1101/04	*2403/10	*2706	*5106	*0304/07	*1203/04	SSOP, SBT
5096	Seoul Red Cr	*11	*24	*27	*51			RVSSOP
8042	Shainberg, Br	*1101	*2433	*2706	*5106	*0304	*1204	
5133	Smith/Baylor	*11	*24	*27	*51	*03	*12	PCR-SSO
735	Smith/MI	*11	*24	*27	*51	*03	*12	RVSSOP
740	Snider, Denis	*1101	*2433	*2706	*5106	*0304	*1204	SSP
746	Stamm, Luz	*1101	*2433	*2706	*5106	*0304	*1204	RVSSOP, SSP
13	Tagliere, Jac	*1101	*2433	*2706	*5106	*0304	*1204	SSP
4021	Trachtenberg	*11	*24	*2706/20	*5106	*03	*12	RVSSOP
5462	Turner, E. V.	*1101	*2433	*2706	*5106	*0304	*1204	SSP, SSO, SEQ
3135	Wernet, Peter	*1101	*2433	*2706	*5106	*0304	*1204	SBT, SSP, SSO

SUMMARY

<p>Extract 401 (Caucasian) <u>49 labs</u></p> <p>A*01 55%</p> <p>A*0101 37%</p> <p>A*010101 6%</p> <p>A*01010101 2%</p> <p>A*01 100% TOTAL</p> <p>A*24 45%</p> <p>A*2402 2%</p> <p>A*2448N 53%</p> <p>A*24 100% TOTAL</p> <p><u>49 labs</u></p> <p>B*08 43%</p> <p>B*0801/19N 8%</p> <p>B*080101/19N 2%</p> <p>B*0801 39%</p> <p>B*080101 8%</p> <p>B*08 100% TOTAL</p> <p><u>45 labs</u></p> <p>Cw*07 42%</p> <p>Cw*0701/06/18 25%</p> <p>Cw*0701/06 2%</p> <p>Cw*070101/18 2%</p> <p>Cw*0701 29%</p> <p>Cw*07 100% TOTAL</p>	<p>Extract 402 (Caucasian) <u>49 labs</u></p> <p>A*24 39%</p> <p>A*2402 4%</p> <p>A*2421 57%</p> <p>A*24 100% TOTAL</p> <p>A*31 39%</p> <p>A*3101/14N 10%</p> <p>A*310102/14N 2%</p> <p>A*3101 39%</p> <p>A*310102 10%</p> <p>A*31 100% TOTAL</p> <p><u>49 labs</u></p> <p>B*07 57%</p> <p>B*0702 35%</p> <p>B*070201 8%</p> <p>B*07 100% TOTAL</p> <p>B*49 22%</p> <p>B*4901 76%</p> <p>B*49 98% TOTAL</p> <p><u>45 labs</u></p> <p>Cw*07 58%</p> <p>Cw*0701/06/18 9%</p> <p>Cw*0701/06 2%</p> <p>Cw*0701 31%</p> <p>Cw*07 100% TOTAL</p> <p>Cw*07 58%</p> <p>Cw*0702 42%</p> <p>Cw*07 100% TOTAL</p>	<p>Extract 403 (Caucasian) <u>48 labs</u></p> <p>A*01 56%</p> <p>A*0101 38%</p> <p>A*010101 4%</p> <p>A*01010101 2%</p> <p>A*01 100% TOTAL</p> <p>A*24 58%</p> <p>A*2402 36%</p> <p>A*240201 2%</p> <p>A*24020101 4%</p> <p>A*24 100% TOTAL</p> <p><u>48 labs</u></p> <p>B*15 44%</p> <p>B*1501 50%</p> <p>B*150101 4%</p> <p>B*15010101 2%</p> <p>B*15 100% TOTAL</p> <p>B*35 37%</p> <p>B*3541 63%</p> <p>B*35 100% TOTAL</p> <p><u>44 labs</u></p> <p>Cw*03 34%</p> <p>Cw*0303/20N 23%</p> <p>Cw*030301/20N 7%</p> <p>Cw*0303 36%</p> <p>Cw*03 100% TOTAL</p> <p>Cw*04 39%</p> <p>Cw*0401/09N 25%</p> <p>Cw*040101/09N 4%</p> <p>Cw*0401 32%</p> <p>Cw*04 100% TOTAL</p>	<p>Extract 404 (Filipino) <u>48 labs</u></p> <p>A*11 46%</p> <p>A*1101/04/21N 4%</p> <p>A*1101/04 4%</p> <p>A*110101/04 2%</p> <p>A*1101/21N 4%</p> <p>A*110101/21N 2%</p> <p>A*1101 32%</p> <p>A*110101 6%</p> <p>A*11 100% TOTAL</p> <p>A*24 34%</p> <p>A*2403/10/33 6%</p> <p>A*2403/10 4%</p> <p>A*2403/33 6%</p> <p>A*240301/33 2%</p> <p>A*2410/33 6%</p> <p>A*2403 2%</p> <p>A*2433 38%</p> <p>A*24 98% TOTAL</p> <p><u>48 labs</u></p> <p>B*27 33%</p> <p>B*2706 67%</p> <p>B*27 100% TOTAL</p> <p>B*51 31%</p> <p>B*5106 69%</p> <p>B*51 100% TOTAL</p> <p><u>44 labs</u></p> <p>Cw*03 46%</p> <p>Cw*0304/07 11%</p> <p>Cw*0304 43%</p> <p>Cw*03 100% TOTAL</p> <p>Cw*12 30%</p> <p>Cw*1203/04 9%</p> <p>Cw*120301/04 2%</p> <p>Cw*1203 2%</p> <p>Cw*1204 46%</p> <p>Cw*120402 11%</p> <p>Cw*12 100% TOTAL</p>
---	---	--	--

INVESTIGATOR	CELL NO.1313 (Chinese)								
CTR	NAME	A1	A2	B1	B2	C1	C2	method	
745	Anthony Nola	*020101	*240301	*1525	*400201	*0403	*150201	SSO,SSP,SBT	
5106	Brown,Colin	*0201	*2403/23/33	*1525	*4002/27/29/35/37+	*0403	*1502/08/11/13+	PCR-SBT,RSSOP	
5232	Charlton,Ron	*0201	*2403	*1525	*4002	*0403/06	*1502/03	SSP,RVSSOP	
4492	Charron,D.	*02	*24	*1525	*40			PCR-SSO	
798	Claas,F.H.J.	*020101	*240301	*1525	*400201	*0403	*150201	RLB,SBT,SSP	
3632	Colombe,Beth	*0201	*2403	*1525	*4002	*0403	*1502/03	SSP	
5130	Costeas,Paul	*0201	*2403	*1525	*4002	*0403	*1502/03	SSP	
779	Daniel,Claud	*02	*24	*(B62)	*(B61)	*04	*15	PCR-SSP	
3625	Darke,Christ	*02	*2403/33	*1525/85	*40(B61)	*0403	*1502/14/18	PCR-SSP	
4269	Dormoy,Anne	*020101	*240301	*1525	*400201	*0403	*150201	PCR-SSP,SBT	
3186	Dunckley,Hea	*02	*24	*1506/25/39/40/*95+	*4002/04/06/11/14+	*04	*15	SSP	
3766	Dunn,Paul	*02	*2403/23/33	*1525	*4002/29/35/37/50+	*0403/06	*1502/08/13/14	SSO,SSP	
856	Dupont,Bo	*02	*2403/10/23/33	*1525	*4002/27/29/35/37+	*0403/06	*1502/08/11/13+	RVSSO	
5214	Eckels/CPMC	*02	*2403	*1525	*4002/29/35/37/50+	*0403/06	*15	SSOP	
4251	Ellis,Thomas	*0201	*2403	*1525	*4002	*0403	*1502/13	PCR-SSO,SEQ	
762	Fischer&Mayr	*02	*24	*15	*40	*04	*15	RVSSO,SSP	
729	Fotino,Maril	*0201	*2403	*1525	*4002	*0403	*1502	SSP,SSO	
8043	Gideoni,Osna	*0201	*2403	*1525	*4002	*0403	*1502	SSOP,SSP	
3808	Hogan,Patric	*02	*24	*1525	*4002/04/06/11/19+	*0401/03-10/12+	*1502-10/12-15+		
771	Israel,Shosh	*0201	*2403	*1525	*4002	*0403	*1502		
859	Kamoun,Malek	*0201	*2403	*1525	*4002	*0406	*1502/08/13		
4337	Kim,Tai-Gyu	*0201	*2403	*1525	*4002	*0403	*1502	SBT	
168	Klein,Tirza	*0201	*2403	*1525	*4002	*04	*15	PCR-SSP,SSO	
278	Lee,Jar-How	*0201/24/66/88N+	*2403	*1525	*4002/56/57	*0403	*1502/13	SSP,RVSSOP	
759	Lefor,W.M.	*0201/07/09/18+	*2403/23/33	*1525	*4002/04/29/35/37+	*0403/06	*1502/08/13/14	RVSSO	
731	Loewenthal,R	*020101	*240301	*1525	*400201	*0403	*150201/13	SBT,SSP	
8029	Mani,Rama	*02	*24	*15	*40			PCR-SSP	
792	Moore,S.Brea	*02	*24	*15(B62)	*40(B61)	*04	*15	PCR-SSO	
733	Mytilineos,J	*02	*24	*1525	*40	*04	*15	SSO	
774	Paik,Young	*0201/24/66/88N+	*2403	*1525	*4002/56/57	*04	*15	SSP,SSOP	
8001	Pancoska,Car	*02	*24	*1525	*4002/56/57	*04	*15	RVSSOP,SSP	
4336	Park,Myoung	*02	*24	*1525	*40	*04	*15	SSO	
16	Pidwell,Dian	*020101	*240301	*1525	*400201	*0403/06	*150201/08	P-RVSSOP,SBT	
4689	Rajczyk&Gyodi	*02	*24	*15	*40		*15	PCR-SSO,SSP	
5200	Reinke,Dennis	*02	*24	*1525	*40(B61)	*04	*15	SSP	
1160	Rosen-Bronso	*02	*24	*1525	*4002	*04	*15	PCR-RSSOP,SSP	
793	Rubocki,Ron	*02	*24	*15	*40	*04	*15	PCR-SSP	
4948	Sage,Deborah	*0201	*2403	*1525	*4002/56	*0403/06	*1502/08/13		
4744	Satake,Masah	*020101	*240301	*1525	*400201			SBT	
3904	Stewart,Dod	*02	*24	*1525	*4002	*04	*15	PCR-SSP	
769	Tavoularis,S	*0201/01L	*2403	*1525	*4002	*0403	*1502/13	SSO,SBT,SSP	
2332	Tbakhi,Abdel	*02	*24	*15	*40	*04	*15	RVSSO	
5462	Turner,E.V.	*0201	*2403	*1525	*4002	*0403/06	*1502/08	SSP,SSO,SEQ	
5451	Van den Berg-	*020101	*240301	*1525	*400201	*0403	*150201	SBT	
5642	Varnavidou-N	*02	*24	*15	*40	*04	*15	PCR-SSP,SSO	
705	Watkins,Davi	*02	*24	*1505+	*4002+	*04	*15	PCR-SSP	
1466	Yu_Neng/ARC	*0201/09/43N/66+	*2403/33	*1525	*4002/56	*0403	*1502/13	PCR-SSOP,SBT	

INVESTIGATOR	CELL NO.1314 (Caucasian)	B1	B2	C1	C2	method
CTR NAME	A1 A2					
745 Anthony Nola	*020101	*510101	*5105	*0401		SSO,SSP,SBT
5106 Brown,Colin	*0201	*5101/11N/30/32	*5105	*04		PCR-SBT,RSSOP
5232 Charlton,Ron	*0201 *0201	*5101	*5105	*0401	*0401	SSP,RVSSOP
4492 Charron,D.	*02	*51// *5307	*5105// *5129			PCR-SSO
798 Claas,F.H.J.	*020101	*510101	*5105	*040101		RLB,SBT,SSP
3632 Colombe,Beth	*0201	*5101	*5105	*0401		SSP
5130 Costeas,Paul	*0201	*5101/29	*5105	*0401		SSP
779 Daniel,Claud	*02	*51		*04		PCR-SSP
3625 Darke,Christ	*02	*51		*0401/07/10		PCR-SSP
4269 Dormoy,Anne	NT					
3186 Dunckley,Hea	*02	*51		*04		SSP
3766 Dunn,Paul	*02	*5101/21N	*5105	*04		SSO,SSP
856 Dupont,Bo	*02	*51		*0401/05/08/09N/12/17		RVSSO
5214 Eckels/CPMC	*02 *02	*51	*5105	*04	*04	SSOP
4251 Ellis,Thomas	*0201 *0201	*5101	*5105	*0401/09N	*0401/09N	PCR-SSO,SEQ
762 Fischer&Mayr	*02	*51		*04		RVSSO,SSP
729 Fotino,Maril	*0201	*5101	*5105	*0401		SSP,SSO
8043 Gideon,Osna	*0201	*5101	*5105	*0401		SSOP,SSP
3808 Hogan,Patric	*02	*51		*0401/04/05/07-14/17-21/23-27		
771 Israel,Shosh	*0201	*5101	*5105	*0401/09N		
859 Kamoun,Malek	*0201	*5101	*5105	*0401		SBT
4337 Kim,Tai-Gyu	*0201	*5101	*5105	*0401		PCR-SSP,SSO
168 Klein,Tirza	*0201	*5101	*5105	*0401		SSP,RVSSOP
278 Lee,Jar-How	*0201/24/66/88N/92/9N-97/*9207	*5101/38	*5105	*0401/12/17-21		RVSSO
759 Lefor,W.M.	*0201/04/07/09/17	*5101/03/04/12/14	*5105	*0401/05/07/12/17+		SBT,SSP
731 Loewenthal,R	*020101	*510101	*5105	*040101/09N		PCR-SSP
8029 Mani,Rama	*02 *02	*51	*51			PCR-SSO
792 Moore,S.Brea	*02	*51		*04		SSO
733 Mytilineos,J	*02	*51	*5105	*04		SSP,SSOP
774 Paik,Young	*0201/24/40/66/88N/92/94N-97+	*51	*5105/10/40	*04		RVSSOP,SSP
8001 Pancoska,Car	*02	*51		*04		SSO
4336 Park,Myoung	*02	*51		*04		P-RVSSOP,SBT
16 Pidwell,Dian	*020101	*510101	*5105	*040101/09N		PCR-SSO,SSP
4689 Rajczyk&Gyodi	*02	*51		*04		SSP
5200 Reinke,Dennis	*02	*51		*04		PCR-RSSOP,SSP
1160 Rosen-Bronso	*02	*51		*04		PCR-SSP
793 Rubocki,Ron	*02	*51				
4948 Sage,Deborah	*0201	*5101/11N/30/32/48	*5105	*0401/09N		
4744 Satake,Masah	*020101	*510101	*5105			SBT
3904 Stewart,Dod	*020101/0104-0108/0110-0112/66	*510101-0103/0105+	*5105	*04		PCR-SSP
769 Tavoularis,S	*0201/01L	*5101	*5105	*0401		SSO,SBT,SSP
2332 Tbakhi,Abdel	*02	*51		*04		RVSSO
5462 Turner,E.V.	*0201	*5101	*5105	*0401		SSP,SSO,SEQ
5451 Van den Berg-	*020101	*510101	*5105	*040101		SBT
5642 Varnavidou-N	*02	*51		*04		PCR-SSP,SSO
705 Watkins,Davi	*02	*51		*04		PCR-SSP
1466 Yu_Neng/ARC	*0201/09/43N/66/75/83N/89/97	*5101/11N/30/32/48	*5105	*0401/09N		PCR-SSOP,SBT

INVESTIGATOR	CELL NO.1315 (Caucasian)		B1	B2	C1	C2	method
CTR NAME	A1	A2					
745 Anthony Nola	*240301	*260101	*380101	*510101	*1203	*1402	SSO,SSP,SBT
5106 Brown,Colin	*2403	*2601/24/26	*3801/10	*5101/11N/19/30/32	*1203/06/07/12+	*1402/07N	PCR-SBT,RSSOP
5232 Charlton,Ron	*2403	*2601	*3801	*5101	*1203	*1402	SSP,RVSSOP
4492 Charron,D.	*2403	*2601	*3801/12	*5101/07/18/30/48	*1203/07/13	*1402	PCR-SSP
798 Claas,F.H.J.	*240301	*260101	*380101	*510101	*120301	*140201	RLB,SBT,SSP
3632 Colombe,Beth	*2403	*2601	*3801	*5101	*1203	*1402	SSP
5130 Costeas,Paul	*2403	*2601	*3801	*5101	*1203	*1402	SSP
779 Daniel,Claud	*24	*26	*38	*51	*12	*14	PCR-SSP
3625 Darke,Christ	*2403/33	*26	*38	*51	*1203	*1402/03	PCR-SSP
4269 Dormoy,Anne	NT						
3186 Dunckley,Hea	*24	*26	*38	*51	*12	*14	SSP
3766 Dunn,Paul	*2403/23/33	*26	*38	*51	*12	*14	SSO,SSP
856 Dupont,Bo	*2403/10/23/33	*26	*3801/09/10	*5101/03/09/11N+	*1203/06/07/12+	*1402/04	RVSSO
5214 Eckels/CPMC	*2403	*26	*38	*51	*12	*14	SSOP
4251 Ellis,Thomas	*2403	*2601	*3801	*5101	*1203	*1402	PCR-SSO,SEQ
762 Fischer&Mayr	*24	*26	*38	*51	*12	*14	RVSSO,SSP
729 Fotino,Maril	*2403	*2601/16	*3801	*5101	*1203	*1402	SSP,SSO
8043 Gideoni,Osna	*2403	*2601	*3801	*5101	*1203	*1402	SSOP,SSP
3808 Hogan,Patric	*24	*26	*3801/02/04/08/09+	*51	*1203/06/11/13+	*1402-08	
771 Israel,Shosh	*2403/10	*2601/09	*3801	*5101	*1203/12	*1402	
859 Kamoun,Malek	*2403	*2601	*3801	*5101	*1203	*1402	
4337 Kim,Tai-Gyu	*2403	*2601	*3801	*5101	*1203	*1402	SBT
168 Klein,Tirza	*2403	*2601	*3801	*5101	*1203	*1402	PCR-SSP,SSO
278 Lee,Jar-How	*2403	*2601/23-26	*3801/09	*5101	*1203	*1402/07N	SSP,RVSSOP
759 Lefor,W.M.	*2403/23/33	*2601/10/15/17+	*3801/09/13/14	*5101/03/12/18/28+	*1203/06/07/12+	*1402/07N/08	RVSSO
731 Loewenthal,R	*240301	*260101	*380101	*510101	*1203	*1402	SBT,SSP
8029 Mani,Rama	*24	*26	*38	*51			PCR-SSP
792 Moore,S.Brea	*24	*26	*38	*51	*12	*14	PCR-SSO
733 Mytilineos,J	*24	*26	*38	*51	*12	*14	SSO
774 Paik,Young	*2403	*26	*38	*51	*12	*14	SSP,SSOP
8001 Pancoska,Car	*24	*26	*38	*51	*12	*14	RVSSOP,SSP
4336 Park,Myoung	*24	*26	*38	*51	*12	*14	SSO
16 Pidwell,Dian	*240301	*260101	*380101	*510101	*1203	*1402	P-RVSSOP,SBT
4689 Rajczyk&Gyodi	*24	*26	*38	*51	*12	*14	PCR-SSO,SSP
5200 Reinke,Dennis	*24	*26	*38	*51	*12	*14	SSP
1160 Rosen-Bronso	*24	*26	*38	*51	*12	*14	PCR-RSSOP,SSP
793 Rubocki,Ron	*24	*26	*38	*51	*12	*14	PCR-SSP
4948 Sage,Deborah	*2403/10	*2601/09	*3801/10	*5101/11N/19/30+	*1203	*1402	
4744 Satake,Masah	*240301	*260101	*380101	*510101			SBT
3904 Stewart,Dod	*24	*26	*38	*51	*12	*14	PCR-SSP
769 Tavoularis,S	*2403	*2601	*3801	*5101	*1203	*1402	SSO,SBT,SSP
2332 Tbakhi,Abdel	*24	*26	*38	*51	*12	*14	RVSSO
5462 Turner,E.V.	*24	*26	*3801	*5101	*1203/12	*1402	SSP,SSO,SEQ
5451 Van den Berg-	*240301	*260101	*380101	*510101	*1203	*1402	SBT
5642 Varnavidou-N	*24	*26	*38	*51	*12	*14	PCR-SSP,SSO
705 Watkins,Davi	*24	*26	*38	*51	*12	*14	PCR-SSP
1466 Yu_Neng/ARC	*2403/33	*2601/24-26	*380101	*5101/11N/30/32/48	*1203	*1402	PCR-SSOP,SBT

INVESTIGATOR		CELL NO.1316 (Hispanic)						
CTR	NAME	A1	A2	B1	B2	C1	C2	method
745	Anthony Nola	*020601	*680301	*3512	*480101	*0401	*0801	SSO,SSP,SBT
5106	Brown,Colin	*0206	*6803	*3512	*4801/09	*04	*08	PCR-SBT,RSSOP
5232	Charlton,Ron	*0206	*6803	*3512	*4801	*0401	*0801	SSP,RVSSOP
4492	Charron,D.	NT						
798	Claas,F.H.J.	*020601	*680301	*3512	*480101	*040101	*080101	RLB,SBT,SSP
3632	Colombe,Beth	*0206	*6803	*3512	*4801	*0401	*0801	SSP
5130	Costeas,Paul	*0206/28	*6803	*3512	*4801	*0401	*0801/03	SSP
779	Daniel,Claud	*02	*68	*35	*48	*04	*08	PCR-SSP
3625	Darke,Christ	*02	*6803/04/05/20+	*3512/22/44	*48/*4012	*0401	*0801/09/11	PCR-SSP
4269	Dormoy,Anne	NT						
3186	Dunckley,Hea	*02	*68	*3512	*4801	*04	*08	SSP,SBT
3766	Dunn,Paul	*0206/10/21/28+	*6803	*3512	*4801/09/11	*04	*0801/08	SSO,SSP
856	Dupont,Bo	*0206/10/21/28+	*6803	*3502/03/04/09/12	*4801/09/10-12	*0401+	*0801+	RVSSO
5214	Eckels/CPMC	*02	*6803	*3512	*48	*04	*08	SSOP
4251	Ellis,Thomas	*0206	*6803	*3512	*4801	*0401/09N	*0801	PCR-SSO,SEQ
762	Fischer&Mayr	*02	*68	*35	*48	*04	*08	RVSSO,SSP
729	Fotino,Maril	*0206	*6803	*3512	*4801/09/11/15	*0401	*0801	SSP,SSO
8043	Gideoni,Osna	*0206	*6803	*3512	*4801	*0401	*0801	SSOP,SSP
3808	Hogan,Patric	*02	*68	*3510/12/13/16/20+	*4801/03/09/11/15+	*0401/03-10/12+	*0801-09/11/12+	
771	Israel,Shosh	*0206	*6803	*3512	*4801	*0401/09N/24	*0801/10	
859	Kamoun,Malek	*0206	*6803	*3512	*4801/09	*0401	*0801	
4337	Kim,Tai-Gyu	*0206	*6803	*3512	*4801	*0401	*0801	SBT
168	Klein,Tirza	*0206	*6803	*3512	*4801	*0401	*0801	PCR-SSP,SSO
278	Lee,Jar-How	*0206/91	*6803	*3512	*4801/09	*0401/18-20	*0801	SSP,RVSSOP
759	Lefor,W.M.	*0206/10/21/28+	*6803	*3512	*4801/09/11	*0401/05/07/10+	*0801/08	RVSSO
731	Loewenthal,R	*020601	*680301	*3512	*480101	*040101/09N	*080101	SBT,SSP
8029	Mani,Rama	*02	*68	*35	*48			PCR-SSP
792	Moore,S.Brea	*02	*68	*35	*48	*04	*08	PCR-SSO
733	Mytilineos,J	*02	*6803	*3512	*48	*04	*08	SSO
774	Paik,Young	*0206/91	*68	*35	*48	*04	*08	SSP,SSOP
8001	Pancoska,Car	*02	*68	*35	*48	*04	*08	RVSSOP,SSP
4336	Park,Myoung	*02	*68	*35	*48	*04	*08	SSO
16	Pidwell,Dian	*020601	*680301	*3512	*480101	*040101/09N	*080101	P-RSSOP,SBT
4689	Rajczyk&Gyodi	*02	*6803	*3512/22	*48	*04	*08	PCR-SSO,SSP
5200	Reinke,Dennis	*02	*68	*35	*48	*04	*08	SSP
1160	Rosen-Bronso	*02	*68	*35	*48	*04	*08	PCR-RSSOP,SSP
793	Rubocki,Ron	*02	*68	*35	*48	*04	*08	PCR-SSP
4948	Sage,Deborah	*0206	*6803	*3512	*4801/09	*0401/09N	*0801	
4744	Satake,Masah	*020601	*680301	*3512	*480101			SBT
3904	Stewart,Dod	*02	*68	*3512	*48	*04	*08	PCR-SSP
769	Tavoularis,S	*0206	*6803	*3512	*4801	*0401	*0801	SSO,SBT,SSP
2332	Tbakhi,Abdel	*02	*68	*35	*48	*04	*08	RVSSO
5462	Turner,E.V.	*0206	*6803	*3512	*4801	*0401	*0801	SSP,SSO,SEQ
5451	Van den Berg-	*020601	*680301	*3512	*480101	*040101	*080101	SBT
5642	Varnavidou-N	*02	*68	*35	*48	*04	*08	PCR-SSP,SSO
705	Watkins,Davi	*02	*68	*35	*48	*04	*08	PCR-SSP
1466	Yu_Neng/ARC	*0206	*6803	*3512	*4801/09	*0401/09N	*0801	PCR-SSOP,SBT

Cell 1313 (Chinese)

47 labs

A*02	55%
A*0201	30%
A*020101	15%
A*02	100% TOTAL

A*24	41%
A*2403/23/33	6%
A*2403/33	4%
A*2403	34%
A*240301	15%
A*24	100% TOTAL

47 labs

B*15	23%
B*1525	77%
B*15	100% TOTAL

B*40	45%
B*4002/56/57	6%
B*4002/56	4%
B*4002	30%
B*400201	15%
B*40	100% TOTAL

44 labs

Cw*04	39%
Cw*0403/06	18%
Cw*0403	39%
Cw*0406	2%
Cw*04	98% TOTAL

Cw*15	62%
Cw*1502/08/13	5%
Cw*1502/08	2%
Cw*150201/08	2%
Cw*1502/13	9%
Cw*150201/13	2%
Cw*1502	9%
Cw*150201	9%
Cw*15	100% TOTAL

Cell 1314 (Caucasian)

46 labs

A*02	57%
A*0201	30%
A*020101	13%
A*02	100% TOTAL

A*24	41%
A*2403/23/33	6%
A*2403/33	4%
A*2403	34%
A*240301	15%
A*24	100% TOTAL

46 labs

B*51	61%
B*5101	24%
B*510101	13%
B*51	98% TOTAL

B*51	41%
B*5105	59%
B*51	100% TOTAL

43 labs

Cw*04	56%
Cw*0401/09N	9%
Cw*040101/09N	5%
Cw*0401	25%
Cw*040101	5%
Cw*04	100% TOTAL

Cell 1315 (Caucasian)

46 labs

A*24	39%
A*2403/10/23/33	3%
A*2403/23/33	4%
A*2403/10	4%
A*2403/33	4%
A*2403	33%
A*240301	13%
A*24	100% TOTAL

A*26	65%
A*2601	22%
A*260101	13%
A*26	100% TOTAL

46 labs

B*38	59%
B*3801	26%
B*380101	15%
B*38	100% TOTAL

B*51	59%
B*5101	28%
B*510101	13%
B*51	100% TOTAL

44 labs

Cw*12	57%
Cw*1203	41%
Cw*120301	2%
Cw*12	100% TOTAL

Cw*14	55%
Cw*1402	43%
Cw*140201	2%
Cw*14	100% TOTAL

Cell 1316 (Hispanic)

45 labs

A*02	56%
A*0206	31%
A*020601	13%
A*02	100% TOTAL

A*68	38%
A*6803	49%
A*680301	13%
A*68	100% TOTAL

45 labs

B*35	38%
B*3512	62%
B*35	100% TOTAL

B*48	49%
B*4801/09	11%
B*4801	25%
B*480101	13%
B*48	98% TOTAL

43 labs

Cw*04	56%
Cw*0401/09N	7%
Cw*040101/09N	5%
Cw*0401	28%
Cw*040101	4%
Cw*04	100% TOTAL

Cw*08	58%
Cw*0801	33%
Cw*080101	9%
Cw*08	100% TOTAL

INTERNATIONAL CELL EXCHANGE

		***** CELL NO.1313 *****						***** CELL NO.1314 *****						***** CELL NO.1315 *****						***** CELL NO.1316 *****											
		V						V						V						V											
		I						I						I						I											
INVESTIGATOR	DAYS	A	A	B	B	C	B	(CHIN)	A	A	B	B	C	B	(CAUC)	A	A	A	B	B	B	(CAUC)	A	A	A	B	B	C	C	B	(HISP)
NAME	OLD	%	4	2	1	4	6	OTHERS	%	1	1	4	4	OTHERS	%	4	6	8	1	4	OTHERS	%	8	5	8	4	8	6	OTHERS		
								X																							
Abbal, M. Pro	6	100	+	+	+	+	+		100	+	+	+53	+		95	03	+	+	+	+		96	+68	+	+	+	+				
Alonso, Anton	8	90	+	+	+	+	+		90	+	+	+	+		90		+		+		A34, A2, B52	90	+68	+	+	+	+	CW7			
Alvarez, Carr	3	80	+	+	+	+	+		90	+	+	+	+		80	+	+	+	+	+		80	+68	+	+	+	+				
Anthony Nola	3	99	+	+	+	+	+		99	+	B551				99	+	+	+	+	+		99	+68	+	+						
Berka, Noured	2	90	+03	+40W6			+		90	+	+53	+	+		90	03	+	+	+	+		90	+	+	+	+	+				
Bow, Laurine	6	99	+	+	+	+	+		99	+	+	+	+		98	+	+	+	+	+		98	+	+	+	+	+				
Burger, Joe	2	99	+03	+	+W6		+		99	+	+53	+	+		99	03	+	+	+	+		99	+68	+	+	+	+				
Chan MD, Soh	6	95	+	+	+	+W6	+		95	+	+53	+	+		95	+	+	+	+	+		95	+	+	+	+	+				
Charoenwongs	6	88	+	+	+	+	+		88	+	+	+	+		87	+	+	+	+	+		79	+	+	+	+	+				
Charron, D. P	5	80	+	+1540			+		80	+	+53	+	+		80	+	+	+	+	+		80	+68	+	+	+	+				
Chongkolwata	6	90	+	+	+	+	+		90	+	+53	+	+		90	+	+	+	+	+		90	+	+	+	+	+				
Choo, Yoon MD	3	99	+03	+	+W6		+		99	+	+	+	+		99	03	+	+	+	+		99	+68	+	+	+	+				
Ciccia/Willi	8	99	+	+	+	+	+	CW3	99	+	+53	+	+		99	+	+	+	+	+		99	+68	+	+	+	+				
Claas, F.H.J.	3	???	+03	+	+W4		+		???	+	+	+	+		???	03	+	+	+	+		???	+	+	+	+	+				
Daniel, Dolly	6	99	+	+	+	+	+	B60	98	+	+53	+	+		98	+10	+	+	+	+		99	+68	+	+	+	+				
Danilovs, Joh	2	98	+	+	+	+W6	+		98	+	+	+	+		98	+	+	+	+	+		98	+	+	+	+	+				
Darke, Christ	6	90	+03	+	+03		+		90	+	+	+	+		90	03	+	+	+	+		90	+68	+	+	+	+				
Du Toit, Erne	14	80	+03	+	+		+		80	+	+	+	+		80	03	+	+	+	+		80	+68	+	+	+	+				
Dunckley, Hea	7	95	+	+15	+		+		95	+	B5				95	+	+	+	+	+		95	+	+	+	+	+				
Dunk, Arthur	3	98	+03	+	+W6		+	CW3	98	+	+53	+	+		98	03	+	+	+	+		98	+	+	+	+	+				
Dunn, Paul Ph	7	95	+	+	+		+	B60	95	+	+53	+	+		95	+	+	+	+	+		95	+68	+	+	+	+				
Eckels/CPMC,	2	98	+03	+	+W6		+		98	+	+	+	+		98	03	+	+	+	+		98	+68	+	+	+	+	BW4			
Eckels/Utah,	3	99	+	+	+	+W6	+		99	+	+53	+	+		99	+	+	+	+	+	CW7	99	+	+	+	+	+				
Fotino, Maril	2	90	+	+	+	+W4	+		90	+	+53	+	+		90	+	+	+	+	+		90	+68	+	+	+	+				
Foxcroft, Z.K	7	80	+A915	+	+		+		80	+	B5	+	+		80	A9	+	+B5	+			80	+	+	+	+	+				
Furukawa, Yok	7	95	+03	+	+03		+		95	+	+	+	+		95	+	+	+	+	+	2408, CW14	91	+	+	+	+	+	C801			
Gideoni, Osna	6	100	+	+	+40W4		+		100	+	+	+	+		100	+	+	+	+	+		100	+	+	+	+	+				
Goggins, R.	3	99	+	+	+	+W4	+		99	+	+	+	+		99	+	+	+	+	+		98	+	+	+	+	+				
Hahn, Amy B.	3	99	+03	+	W6		+	B60	99	+	+53	+	+		99	03	+	+	+	+	CW7, CW6	99	+68	+	+	+	+				
Hajeer, Ali D	19	85	+	+	+		+	B60, BW4	85	+	+	+	+		85	+	+	+	+	+		85	+68	+	+	+	+	BW4			
Harville/UA,	2	95	+	+	+	+W6	+		95	+	+53	+	+	A68	95	+	+	+	+	+		95	+68	+	+	+	+				
Henrico Doct	6	99	+	+	+	+W4	+		99	+	+	+	+		95	+	+	+	+	+		98	+68	+	+	+	+				
Hogan, Patric	7	90	+	+	+	+	+		90	+	+	+	+		90	+	+	+	+	+		90	+	+	+	+	+				
Holdsworth, R	7	95	+	+1540			+		95	+	+	+	+		98	+	+	+	+	+		98	+68	+	+	+	+				
Hubbell, Char	2	95	+	+	+40		+		95	+	+53	+	+		95	+	+	+	+	+		95	+	+	+	+	+				
Ichikawa MD,	9	???	+	+	W4		+	B60	???	+	+	+	+	B35, BW6	???	+	+	+	+	+		???	+68	+	+	+	+				
Israel, Shosh	6	95	+	+	+	+W4	+		95	+	+	+	+		95	+	+	+	+	+		95	+	+	+	+	+				
Keown, Paul M	2	100	+	+	+		+	B60	100	+	+53	+	+		100	+	+	+	+	+		100	+	+	+	+	+				
Kim, Kyeong-H	6	95	+	+	+	+	+	CW3	95	+	+53	+	+	CW7, A28	95	+	+	+	+	+		95	+	+	+	+	+	CW6			
Klein, Tirza	6	99	+	+	+	+	+	CW3	95	+	+53	+	+		95	+	+	+	+	+		95	+68	+	+	+	+				
Kohara, Setsu	9	99	+	+	+	+	+	A23	99	+	+	+	+	A29	99	+	+	+	+	+	A23	99	+	+	+	+	+	A29			
Kopko, Patric	2	98	+	+	+	+03	+	B62V	99	+	+	+	+		98	+	+	+	+	+		97	+	+	+	+	+				
Kvam, Vonnett	3	95	+	+	+	+W6	+		98	+	+53	+	+		98	+	+	+	+	+	CX14	97	+	+	+	+	+				
Lardy, N.M. D	8	90	+	+	+	+	+		90	+	+	+	+		90	+	+	+	+	+		90	+	+	+	+	+				
Lazda, Velta	2	99	+03	+	+W6		+		99	+	+53	+	+		99	+	+	+	+	+		99	+68	+	+	+	+				
Lebeck, Laura	2	98	+	+	+	+	+		98	+	+53	+	+		98	03	+	+	+	+		98	+	+	+	+	+				
Lee, Wee Gyo	7	90	+	+	+	+W4	+	CX15	90	+	+53	+	+		90	+	+	+	+	+	CX14, CX12	90	+68	+	+	+	+				
Lefor, W.M. P	2	99	+03	+	+W6		+		99	+	+51	+	+	B51V	99	03	+	+	+	+		99	+68	+	+	+	+	B48S			
Lo, Raymundo	6	98	+03	+	+		+		98	+	+53	+	+		98	03	+	+	+	+		98	+68	+	+	+	+				
Loewenthal M	6	95	+	+	+40W4		+		95	+	+	+	+		95	+	+	+	+	+		NT									

INTERNATIONAL CELL EXCHANGE

		***** CELL NO.1313 *****						***** CELL NO.1314 *****						***** CELL NO.1315 *****						***** CELL NO.1316 *****							
		V						V						V						V							
		I						I						I						I							
		(CHIN)						(CAUC)						(CAUC)						(HISP)							
INVESTIGATOR	DAYS	A	A	B	B	C	B	A	A	B	B	C	B	A	A	A	B	B	B	A	A	A	B	B	C	C	B
NAME	OLD	%	4	2	1	4	6	%	1	1	4	4	%	4	6	8	1	4	%	8	5	8	4	8	6	OTHERS	

MacCann, Eile	2	95	+	+	+	+	+	95	+	+	+	+	95	+	+	+	+	95	+	+	+	+	+	+	+
Mah, Helen	3	98	+03	+	+W4	+	+	98	+	+	+	+	98	03	+	+	+	98	+68	+	+	+	+	+	+
McAlack, Robe	2	97	+	+	+	+W6	+	98	+	+53	+	+	97	+	+	+	+	97	+68	+	+	+	+	+	+
McAlack-Bala	2	99	+03	+	+W6	+	+	99	+	+53	+	+	98	03	+	+	+	99	+	+	+	+	+	+	+
McCluskey, Ja	8	95	+	+15	+03	+	+	90	+	+	+	+	85	+	+	+	+	CW6	99	+	+	+	+	+	+
Murad, Shahna	17	95	+	+	W6	+	B60, B77	95	+	+	+	+	95	+	+	+	+	B52	95	+	+	+	+	+	B61
Norin, Allen	2	98	+	+	+	+	+	99	+	+	+	+	99	+	+	+	+	+	99	+68	+	+	+	+	+
Paik, Young K	2	95	+03	+	+W4	+	+	95	+	+	+	+	95	03	+	+	+	+	95	+68	+	+	+	+	+
Pais, Maria L	8	98	+	+	+	+	B60	98	+	+	+	+	98	+	+	+	+	A66	98	+	+	+	+	+	+
Park, Myoung	6	95	+	+	+	+	+	95	+	+	+	+	95	+	+	+	+	+	95	+	+	+	+	+	+
Phelan, Donna	2	95	+03	+	+W4	+	CX15	95	+	+51	+	+	95	03	+	+	+	CX14, CX12	???	+68	+	+	+	+	+
Pidwell, Dian	2	98	+	+	+	+03	+	A24V	98	+	+	+	+	98	+	+	+	+	98	+	+	+	+	+	+
Pollack, Mari	2	95	+	+	+	+X6	+	A24S	95	+	+53	+	+	95	+	+	+	+	A24S	95	+	+	+	+	+
Rajczyk, Gyodi	4	90	+	+	+	+W6	+	90	+	+	+	+	90	+	+	+	+	+	90	+	+	+	+	+	+
Rosen-Bronso	3	90	+03	+	+	+	B75	90	+	+53	+	+	90	03	+	+	+	+	90	+68	+	+	+	+	+
Rosenberg, J.	2	98	+	+	+	+W4	+	CX15	98	+	+	+	+	98	+	+	+	+	CX14, CX12	98	+68	+	+	+	+
Rubocki, Rona	3	98	+	+	+	+W4	+	98	+	+	+	+	98	+	+	+	+	+	98	+	+	+	+	+	+
Satake, Masah	3	98	+	+15	+	+	1525	99	+	0251	+	+	99	03	+	+	+	CX14	100	+	+	+	+	+	+
Sauer, Norber	6	95	+	+	+	+W4	+	95	+	+53	+	+	95	+	+	+	+	+	95	+68	+	+	+	+	+
Semana MD, Gi	10	99	+	+	+40	+	+	99	+	+	+	+	99	+10	+	+	+	+	99	+	+	+	+	+	+
Smith/Baylor	9	99	+	+	+	+	+	99	+	+	+	+	99	+	+	+	+	+	99	+68	+	+	+	+	+
Stamm, Luz	7	98	+03	+	W6	+	B60	98	+	+53	+	+	A28	98	03	+	+	+	98	+	+	+	+	+	+
Steinberg, Ka	2	96	+03	+	+W4	+	+	96	+	+	+	+	96	03	+	+	+	+	96	+68	+	+	+	+	+
Stewart, Dod	2	99	+	+	+	+W4	+	99	+	+	+	+	99	+	+	+	+	+	99	+68	+	+	+	+	+
Tagliere, Jac	3	100	+	+	+	+W6	+	100	+	+53	+	+	100	+	+	+	+	+	100	+	+	+	+	+	+
Van Den Berg	7	90	+	+	+	+	+	90	+	+	+	+	90	+	+	+	+	+	90	+	+	+	+	+	+
Varnavidou-N	6	98	+03	+	+	+	+	98	+	+	+	+	98	03	+	+	+	+	98	+68	+	+	+	+	+
Vidan-Jeras,	7	90	+03	+	+	+	+	90	+	+	+	+	90	03	+	+	+	+	90	+	+	+	+	+	+
Walter Reed	2	97	+	+	+40W6	+	B40V	97	+	+	+	+	B49	97	03	+	+	+	97	+	+	+	+	+	+
Ward, William	3	98	+03	+	+	+	+	98	+	+53	+	+	98	03	+	+	+	+	CW7	98	+68	+	+	+	+
Watkins, Davi	7	90	+	+	+	W4	+	CW3, B60	90	+	+52	+	+	90	+	+	+	+	99	+	+	+	+	+	+
Wernet, Peter	**	98	+	+	+	+	+	98	+	+	+	+	98	+	+	+	+	+	98	+68	+	+	+	+	+
Williams, Mar	7	99	+	+	W6	+	B60, B75	99	+	+53	+	+	99	+	+	+	+	+	CW7	99	+	+	+	+	+
Wisecarver, J	7	98	+03	+	+	+	+	98	+	+	+	+	98	03	+	+	+	+	98	+	+	+	+	+	+

 * *
 * SUMMARY TABLE *
 * *

(CHIN)
 **** CELL 1313 ****
 (84 SAMPLES TYPED)
 A2 100.0%
 (100.0%)

 A24 67.9%
 2403 28.6%
 A9 1.2%
 (97.6%)

 B62 90.5%
 B15 7.1%
 (97.6%)

 B61 77.4%
 B40 9.5%
 (86.9%)

 CX4 0.0%
 CW4 21.4%
 CW6 25.0%
 C403 6.0%
 C4X6 1.2%
 (53.6%)

 BW6 92.9%

(OTHERS FOUND)
 B60 13.1%
 CW3 6.0%
 CX15 3.6%
 BW4 2.4%
 B75 2.4%
 CW2 1.2%
 B77 1.2%
 1525 1.2%
 A24S 1.2%
 B62V 1.2%
 A23 1.2%
 B40V 1.2%
 A24V 1.2%

(CAUC)
 **** CELL 1314 ****
 (84 SAMPLES TYPED)
 A2 100.0%
 (100.0%)

 B51 95.2%
 B5 3.6%
 5102 1.2%
 (100.0%)

 B51X 0.0%
 B51 4.8%
 B52 1.2%
 B53 38.1%
 (44.0%)

 CW4 67.9%

 BW4 92.9%

(OTHERS FOUND)
 B35 2.4%
 BW6 2.4%
 A28 2.4%
 CW7 1.2%
 A29 1.2%
 A68 1.2%
 B49 1.2%
 B51V 1.2%

(CAUC)
 **** CELL 1315 ****
 (84 SAMPLES TYPED)
 A24 65.5%
 2403 31.0%
 A9 1.2%
 (97.6%)

 A26 95.2%
 A10 2.4%
 (97.6%)

 B38 100.0%
 (100.0%)

 B51 96.4%
 B5 1.2%
 (97.6%)

 BW4 92.9%

(OTHERS FOUND)
 CX14 6.0%
 CW7 4.8%
 CX12 3.6%
 B52 2.4%
 CW6 2.4%
 A66 1.2%
 A24S 1.2%
 A23 1.2%
 CW14 1.2%
 2408 1.2%
 A2 1.2%
 A34 1.2%

(HISP)
 **** CELL 1316 ****
 (83 SAMPLES TYPED)
 A2 98.8%
 (98.8%)

 A28 48.2%
 A68 47.0%
 (95.2%)

 B35 98.8%

 B48 96.4%

 CW4 63.9%

 CW8 43.4%

 BW6 91.6%

(OTHERS FOUND)
 BW4 2.4%
 B61 1.2%
 CW6 1.2%
 A29 1.2%
 C801 1.2%
 CW7 1.2%
 B48S 1.2%

*** 84 LABORATORIES REPLIED ***

***** NEXT SHIPMENT: 02/06/2008 *****