

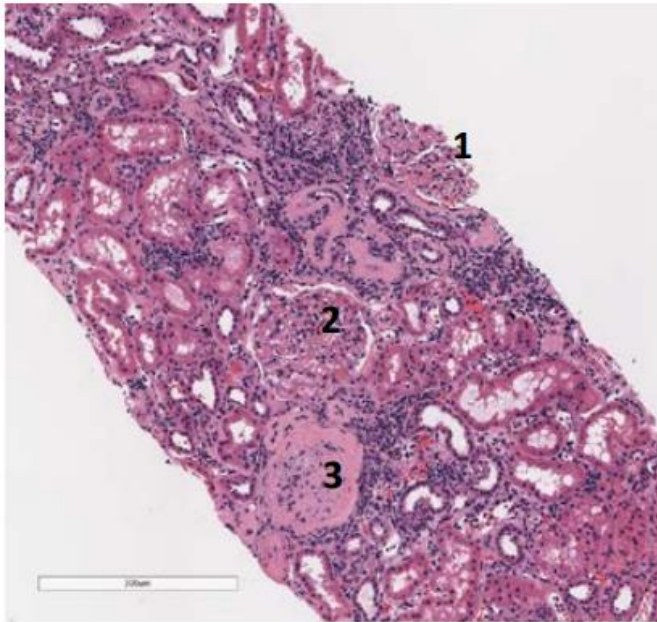
Frozen section reporting for kidney allograft (donor) evaluation

The majority of the time, the question asked and what needs to be reported is the amount of sclerosis:

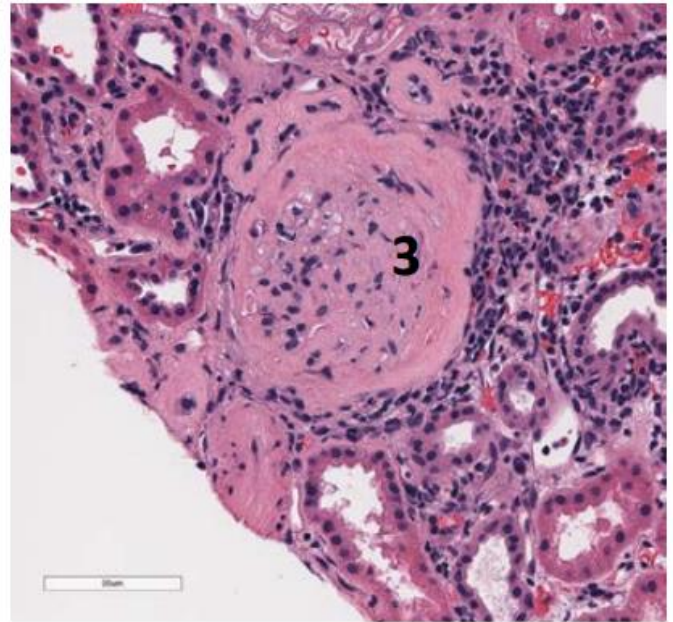
1. Provide percentage of glomerulosclerosis for entire biopsy
 - a. Count total glomeruli (including completely sclerotic glomeruli)
 - b. Count completely sclerotic glomeruli
 - c. Divide sclerotic glomeruli by total glomeruli and multiply product by 100

Example:

This field has 3 glomeruli



This glomerulus is completely sclerotic



Percentage glomerulosclerosis in field: $1/3 = 0.333 \times 100 = 33.3\%$

2. If the surgeon requests evaluation of cortical or vascular scarring, please defer to the renal attending on service. If the renal attending is unavailable, please inform the surgeon evaluation of interstitial scarring on a frozen section H&E is not reliable and defer to permanents.
3. Contact renal attending on service if you need assistance (the renal attending may not be available after hours).

Note: Definitive criteria for kidney allograft acceptance have not been established. Nevertheless, it is recommended to have less than 20% glomerulosclerosis in accepted allograft kidneys.

References:

- Liapis H, et al. Banff Histopathological Consensus Criteria for Preimplantation Kidney Biopsies. *Am J Transplant.* 2017 Jan;17(1):140-150.
- Naesens M. Zero-Time Renal Transplant Biopsies: A Comprehensive Review. *Transplantation.* 2016 Jul;100(7):1425-39