



Patient with progressive bilateral lower extremity weakness

DIVISION OF INTERVENTIONAL NEURORADIOLOGY

Presents a patient case treated by the team members of the division and physicians and staff of the UCLA Comprehensive Stroke Center

GARY DUCKWILER, MD
Director and Professor

FERNANDO VINUELA, MD
Professor Emeritus

REZA JAHAN, MD
Professor

SATOSHI TATESHIMA, MD, DMSc
Associate Professor

NESTOR GONZALEZ, MD
Associate Professor

VIKTOR SZEDER, MD, PhD
Assistant Professor

PATIENT PRESENTATION

- Elderly woman with 6 weeks of progressively worsening bilateral lower extremity weakness, falls, urinary incontinence and low back pain

EVALUATION AND IMAGING

- MRI of the spine (Figure 1) showed T2 hyperintensity within the mid-thoracic spine down to the conus.
- Spinal angiogram (Figure 2) confirmed dural arteriovenous fistula at the left T8 level.

INTERVENTION PERFORMED

- Endovascular embolization entailed microcatheterization of the T8 feeding vessel (figure 3) with injection of Onyx to occlude the feeding arteries and the proximal draining vein. This was carried out with success.



Figure 1: MRI of the thoracic and lumbar spine shows T2W hyperintensity in the spinal cord.

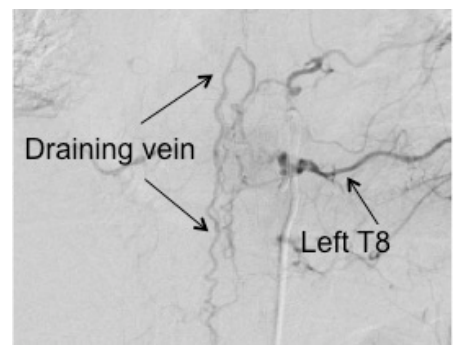


Figure 2: Spinal angiogram with injection of the left T8 intercostal artery shows filling of spinal vein, the draining vein of this dural arteriovenous fistula.

(over)

SELECTIVE INJECTION OF FEEDER

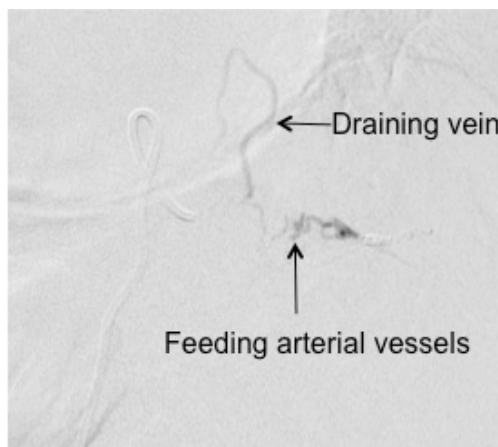


Figure 3: Selective injection of the feeding vessel shows multitude of small arterial vessels connecting directly to the draining vein. The injection of Onyx was carried out from this location with successful occlusion of the feeding vessels and proximal draining vein.

Procedures provided by DINR for adult and pediatric patients

Acute Ischemic Stroke

Acute Thrombectomy/Thrombolysis
Extra/Intracranial Angioplasty/Stenting

Brain Hemorrhage, Aneurysm/AVM/fistulae

Aneurysm coiling
Stent/balloon assisted aneurysm coiling
Flow diverter stent device embolization
AVM/Dural fistulae embolization
Venous Sinus Thrombectomy/Thrombolysis
Direct transcatheter embolization

Chronic Occlusive Cerebrovascular Disease

Extra/Intracranial Angioplasty/Stenting
Venous Sinus Angioplasty/Stenting

Head/neck/orbit tumors & vascular malformations, epistaxis

Endovascular embolization
Direct percutaneous embolization

PATIENT OUTCOME

- The patient was discharged home on post operative day #2.
- She was seen in clinic three weeks later with complete resolution of symptoms.
- Plan for follow up MRI of spine in 3 months and follow up spinal angiogram in 6 months.

Division of Interventional Neuroradiology – A Leader in Neurovascular Care and Research

- Invented the Merci retriever – the 1st endovascular device for acute stroke therapy
- Invented GDC and Matrix coils – the leading tool for aneurysm treatment around the world
- Developed Onyx liquid embolic material – the leading therapy for brain vascular malformations

