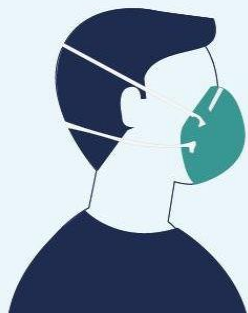


2021 N95 Fit Testing



N95 CLASSES RUN ON THE HOUR AND HALF-HOUR (AT :00 AND :30 OF EVERY HOUR)

Date	N95 FIT TESTING	PAPR	Location
7/7	6am-830am & 9am-12pm (Last N95 class starts 1130am)	830am-9am	RRMC B-124 Conf. Room A&B
7/17	6am-830am & 9am-11am (Last N95 class starts 1030am)	830am-9am	RRMC B-124 Conf. Room A&B
7/23	6pm-830pm & 9pm-10pm (Last N95 class starts 930pm)	830pm-9pm	RRMC B-124 Conf. Room A&B
8/3	6am-830am & 9am-12pm (Last N95 class starts 1130am)	830am-9am	RRMC B-124 Conf. Room A&B
8/14	6am-830am & 9am-11am (Last N95 class starts 1030am)	830am-9am	RRMC B-124 Conf. Room A&B
8/20	6pm-830pm & 9pm-10pm (Last N95 class starts 930pm)	830pm-9pm	RRMC B-124 Conf. Room A&B
9/7	6am-830am & 9am-12pm (Last N95 class starts 1130am)	830am-9am	RRMC B-124 Conf. Room A&B
9/18	6am-830am & 9am-11am (Last N95 class starts 1030am)	830am-9am	RRMC B-124 Conf. Room A&B
9/24	6pm-830pm & 9pm-10pm (Last N95 class starts 930pm)	830pm-9pm	RRMC B-124 Conf. Room A&B

N95 Fit Testing:

- N95 sessions will run in groups (not individually)
- The trainer can fit test 9 employees per session
- Admittance is on a first come, first served basis
- Anyone with facial hair that comes in contact with the seal; cannot be fit tested per OSHA
- We advise no smoking, eating and/or drinking 5-10 minutes beforehand (or rinse out with water), as this is a taste test

**PAPR Training has been added to the schedule for employees with facial hair or employees who cannot wear the N95 for medical reasons