

# CARDIOVASCULAR PATHOLOGY GROSSING GUIDELINES

**NOTE:** Please review all complex or “interesting” gross specimens with Drs. Michael Fishbein, Gregory Fishbein, or Ryan Lau.

**Specimen Type:** NATIVE HEART VALVES

**Procedure:**

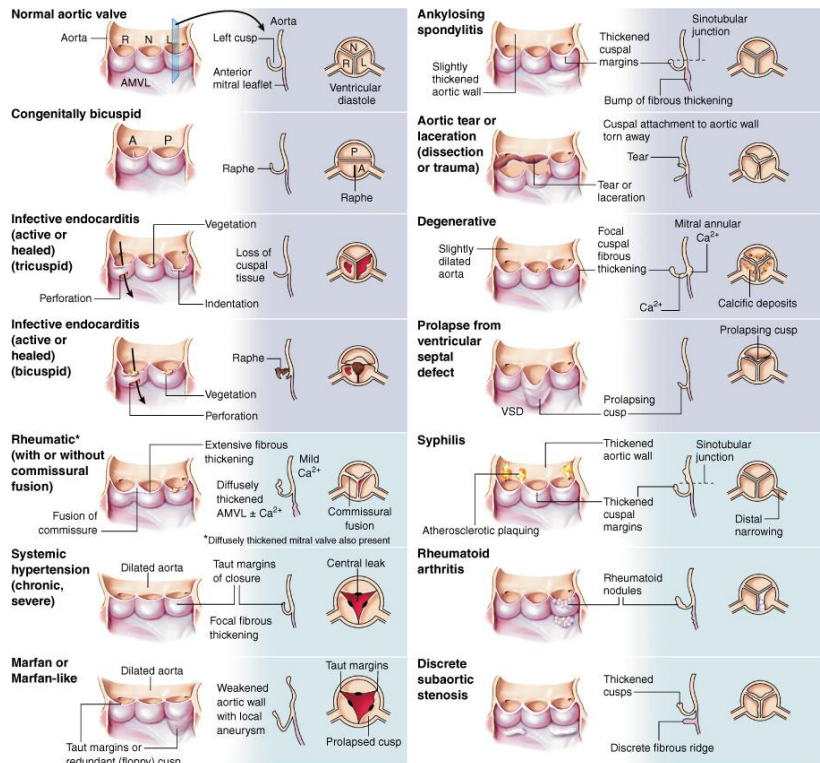
1. Take gross photographs
2. Measure, range and aggregate
3. Document presence of lesions, vegetations, calcifications

**Gross Template:**

**MMODAL COMMAND: INSERT HEART VALVE**

It consists of multiple yellow-tan soft tissue fragments measuring [*measure in three dimensions\*\*\**] cm in aggregate. The [*cusps or leaflets\*\*\**] are [*yellow, smooth, calcified, and intact\*\*\**]. Tears in the leaflets [*are/are not\*\*\**] identified. The papillary muscles are [*hypertrophied/unremarkable/not present\*\*\**]. Gross photographs are taken. Representative sections are submitted, [*describe cassette submission noting blocks needing decalcification and whether stat or EDTA decal is used\*\*\**].

**Cassette Submission:** One cassette of representative tissue, decal as needed



Copyright © 2005 by Elsevier Inc.