

REPORT OF THE 331ST CELL EXCHANGE

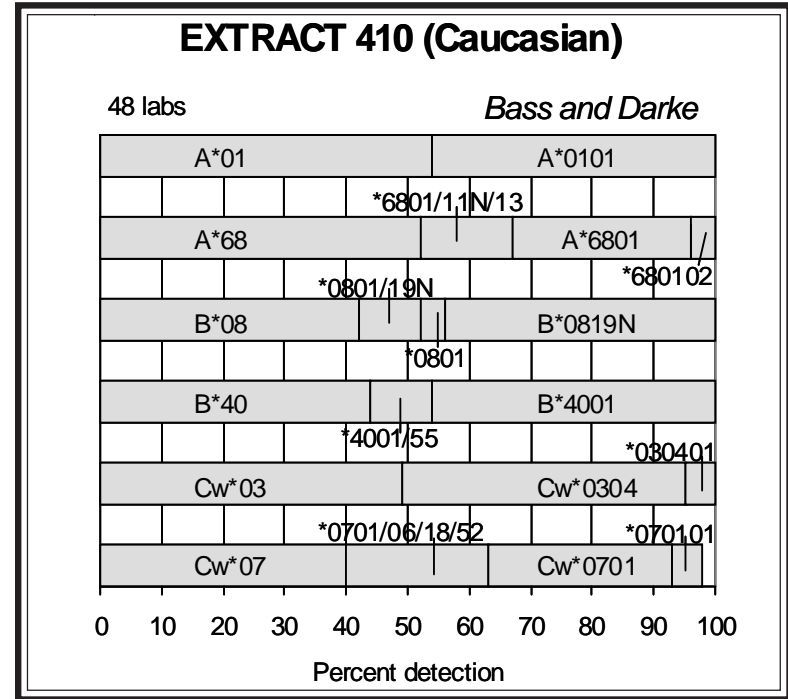
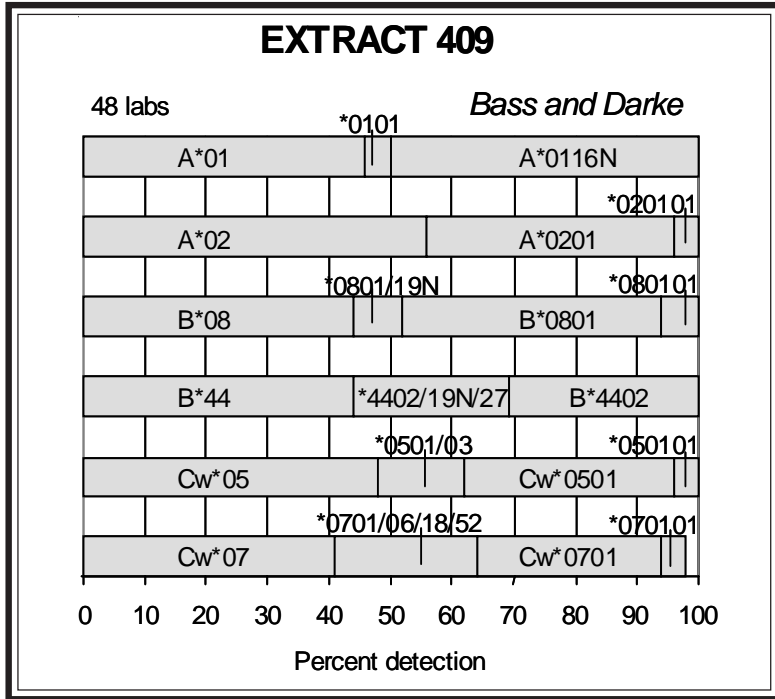
MARCH 5, 2008

DNA Extract	409-412
Cells	1321-1324

Extract Exchange

We wish to thank **Helen Bass and Christopher Darke, Welsh Blood Service, Pontyclun**, and **Jeri Phillips and George Gaucys, Badger-Hawkeye Red Cross, Madison WI**, and **Javier Carreon, University of Chicago Hospital**, for their donations of cells with rare variants

Two null alleles, A*0116N and A*B*0819N, were typed for the first time in the Cell Exchange. Labs were also given the opportunity to type other unusual types, including A*0211, A*2453, B*0802, and B*4004.



Extract 409. This cell was 42989, the reference cell for A*0116N, as correctly identified by McIntyre. The sequence differs from A*01010101 with an insertion of G at nucleotide position 530 (in codon 153), as noted by Reed.

A*0116N (50%) was detected by half of the labs.

B*0801 (48%) and B*4402 (31%) were the B-locus types.

Cw*0501 (38%) and Cw*0701 (34%) were the C-locus types.

The likely haplotypes may be A*0201-B*4402-Cw*0501, commonly found in all populations, except in Asians, and A*0116N-B*0801-Cw*0701. A*0101-

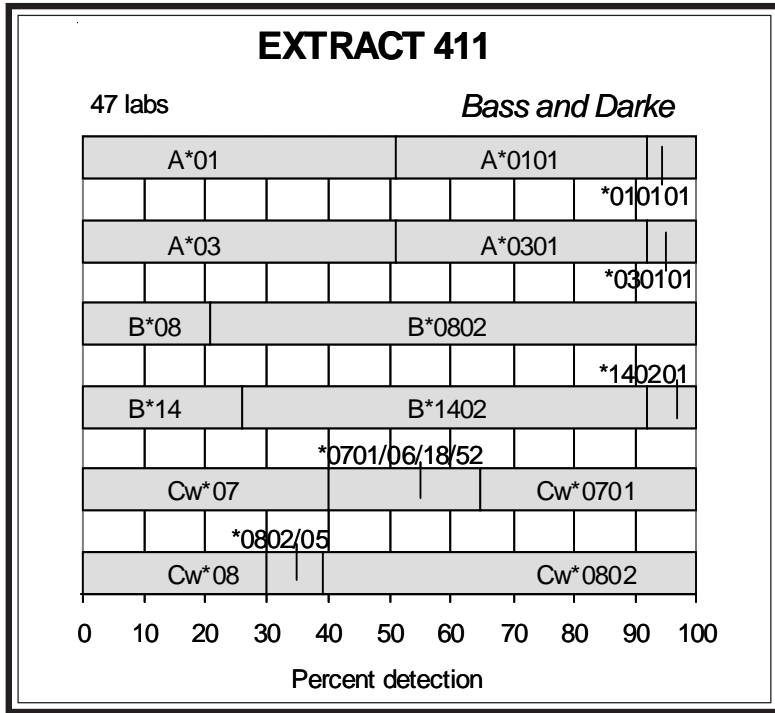
B*0801-Cw*0701 is another common haplotype found in all populations, except Asians.

Extract 410. This cell from a Caucasian donor was 11829109, the reference B*0819N cell, as astutely identified by McIntyre.

B*0819N was assigned by 44%.

The second B-locus allele was B*4001 (46%).

A*0101 (46%) and A*6801 (33%) were the A-locus types.



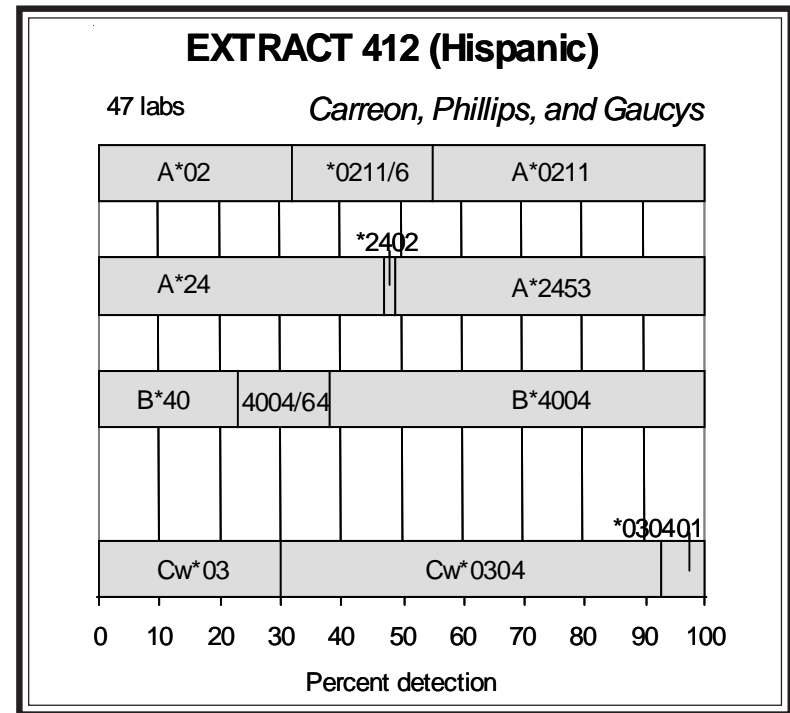
Cw*0304 (51%) and Cw*0701 (35%) were the C-locus alleles.

B*4001 and Cw*0304 are found in strong association. Therefore, the other association was likely B*0819N-Cw*0701.

Extract 411. This cell with the unusual B*0802 was previously typed as extract 234 (2003), as correctly identified by Brown and Moses and Dunckley. B*0802 was described as being identical to B*0801, except at positions 77-83 which defines the Bw4 and Bw6 epitope, with B*0802 having the Bw4 motif instead of the expected Bw6, as found with the common B*0801 (1,2,3). Regarding the serological expression of the "B8Jon" variant encoded by B*0802, Darke et al. said, "Time course studies, absorption analyses and serological tests on 17 Bw4 antibodies suggest that B8Jon possesses an unusually 'weak' Bw4 epitope." (2) This cell is the sole B*0802 typed in the Cell Exchange.

B*0802 was well typed, by 79%, similar to the 2003 detection level of 75%.

The second B-locus type, B*1402 (75%), was also well detected. Cw*0701 (35%) and Cw*0802 (61%) were the C-locus types.



The likely associations were B*1402-Cw*0802 and B*0802-Cw*0701.

Extract 412. This Hispanic cell was previously typed as extracts 193 (2002) and 265 (2003), as noted by Brown and Moses and Dunckley. In the 2002 study, a novel A*24 sequence was reported by 9 labs including Blasczyk, Chan, Fuller, Gebel, Holdsworth, Fernandez-Vina, Hartzman and Hurley, Morrisey, Smith, Wernet, and reaffirmed in the 2003 study by 11 labs (Albert, Blasczyk, Ball and Cook, Ellis, Mayr and Fischer, Holdsworth, Fernandez-Vina, Hartzman, and Hurley, KW Lee, Prokupek, Reed, Wernet). The new sequence differs from A*24020101 at position 368 (T→A), in codon 99, and from A*2415 (C→T) at position 385, in codon 105, and is now formally recognized as A*2453.

A*2453 was detected by 51% of the labs.

The second A-locus type was A*0211 (45%).

The sole B-locus allele was the rare B*4004, as assigned by 62%.

Cw*0304 (*030401) (70%) was well detected as the sole C-locus type.

Typing results of a sibling of this donor as extract 193 confirmed that the haplotypes were A*0211-B*4004-Cw*0304 and A*2453-B*4004-Cw*0304.

Cell Exchange

Different A68 subtypes, including those encoded by A*6803 and A*6805, B40 subtypes, including those encoded by B*4006 and B*4008, and Cw8

subtypes, including those encoded by Cw*0801, Cw*0802, and Cw*0803, were studied in this month's exchange.

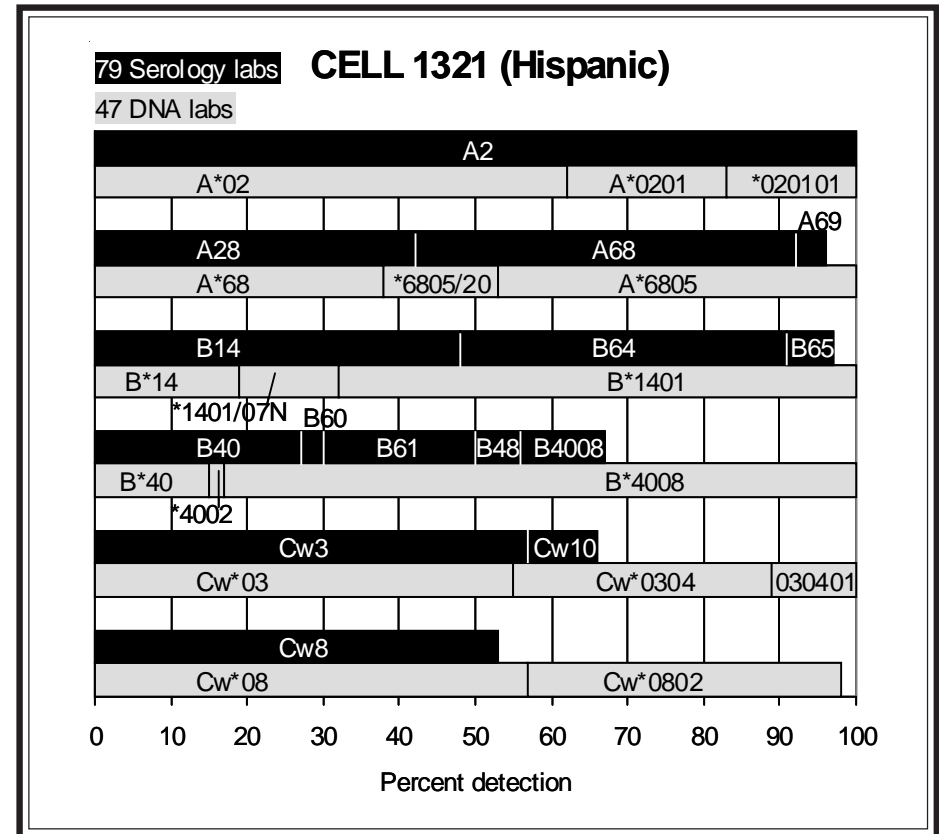
Cell 1321. Unusual and somewhat shorter reactivity with anti-B60, -B61, and -B48 was observed by a number of labs. B40 was assigned by 27%, B61 by 20%, B4008 by 11%, B48 by 6%, and B60 by 3%. The B40 variant was confirmed as B*4008, as reported by a high 83%. B*4008 was previously typed in cells 992 (also cell 969 and extract 328), 1061, and 1101, all from Hispanic donors, and extract 617.

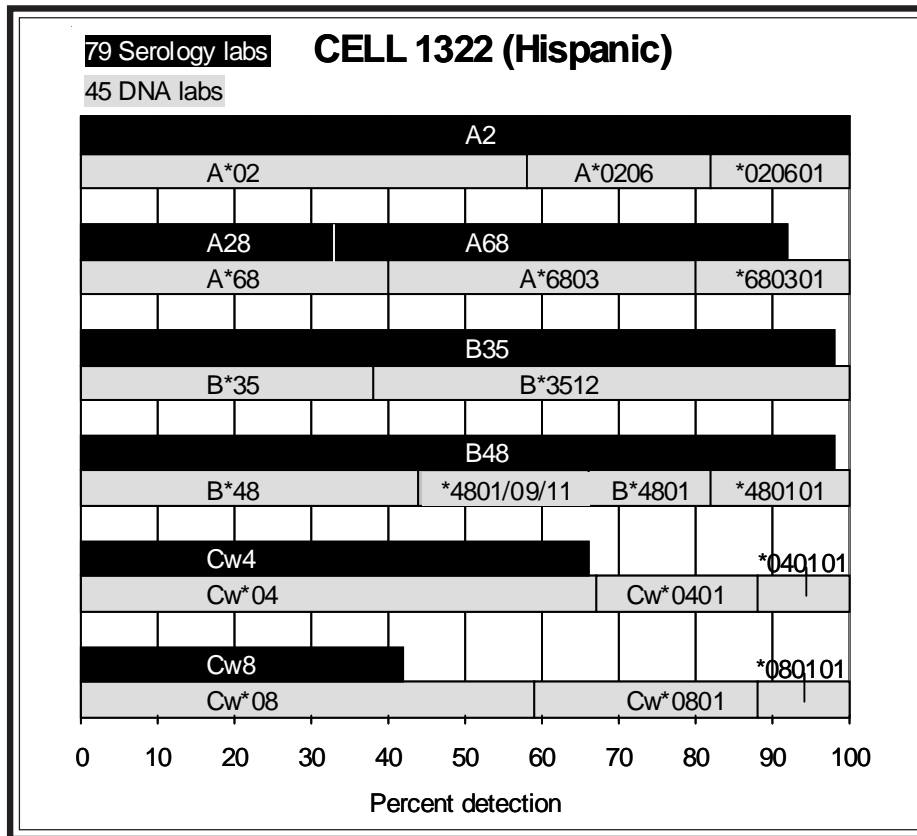
A68 (51%) was assigned by half of the labs, and another 42% reported A28. However, Lefor and Pidwell noted that the anti-A68 reactivity was not typical. A*6805 was assigned by 47%. This allele was previously typed in cell 1063 and extracts 300 (also extract 115) and 344. Cell 1063 and extract 300 were from Hispanic donors.

Lefor commented upon finding both A*6805 and B*4008, but not in linkage, in local Hispanic donors.

B64 (43%) was the B14 split, confirmed as B*1401 (68%).

Cw3 (66%) and Cw8 (53%) were established as Cw*0304 (45%) and Cw*0802 (41%), respectively.





Cell 1322. This Hispanic donor was previously typed as cell 1316 last year, as correctly identified by Moses and Dunckley, Eckels, and Lefor.

A68 was detected by 60%, at a somewhat higher detection level than for the A68 in cell 1321. The more commonly found allele, A*6803 (60%), was present in this cell, whereas A*6805 was found in cell 1321.

Overall, this cell was well typed A2, A28 (A68), B35, B48, Cw4, Cw8 and A*0206, A*6803, B*3512, B*4801, Cw*0401, Cw*0801.

A*0201-B*3512-Cw*0401, listed as a commonly found haplotype in U.S. Hispanics with HF=0.0107 by Cao et al. (4) and A*6803-B*4801-Cw*0801 were the probable haplotypes.

Cell 1323. This cell was from a donor of mixed ethnicity, being Asian, Caucasian, and Native American.

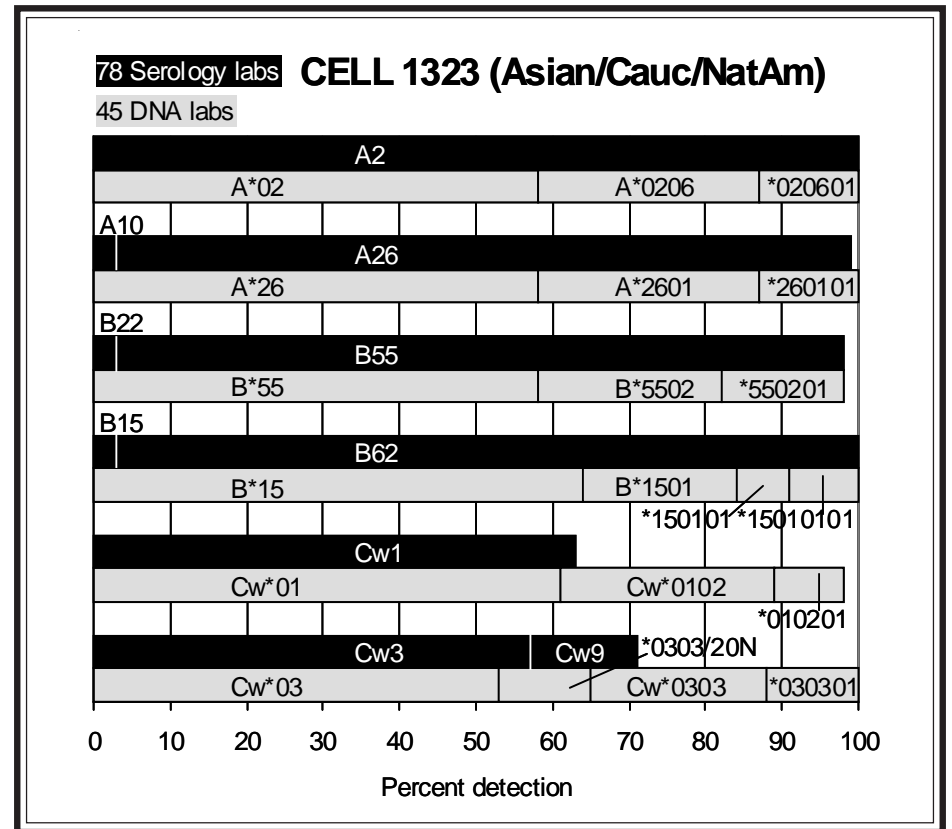
B55 was assigned by 95% and confirmed as B*5502 (40%). Abbal, Anthony Nolan Trust, Pidwell, and Tanaka noted a B55 variant. This same B55 variant was previously typed in cells 1264, 1289 (also cell 1249) and 1291 (also cells 1192, 1233), and extract 258 (also extract 61), all from Asian donors.

The second B-locus antigen present in this cell was the common B62 (97%) encoded by B*1501 (36%).

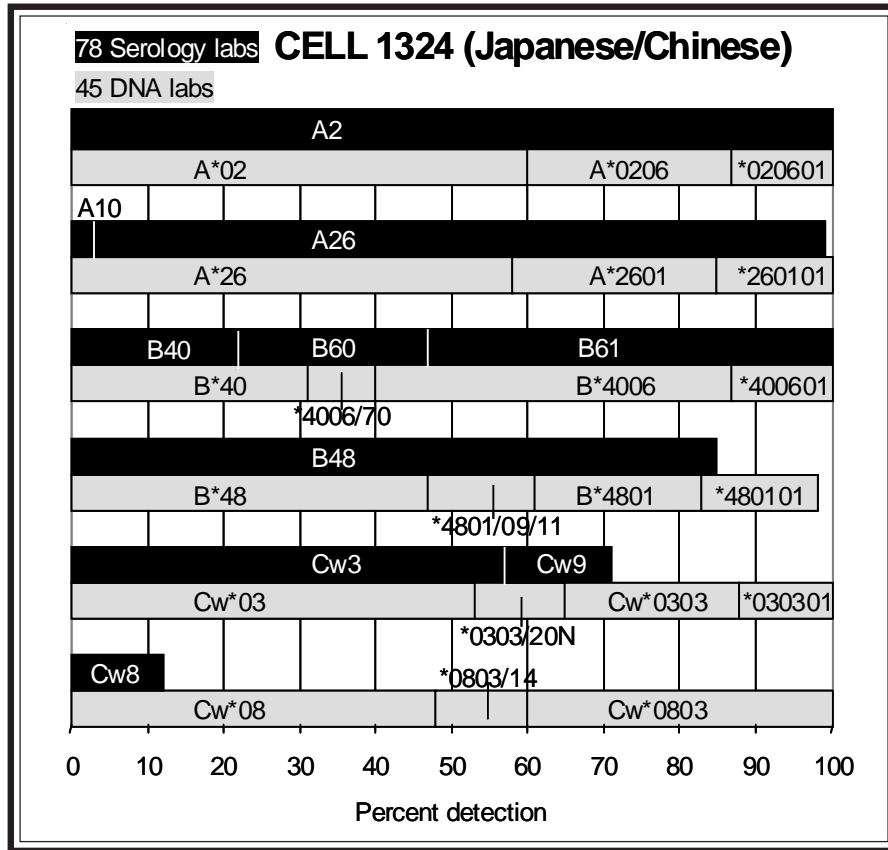
A2 (100%) and A26 (96%) were verified as A*0206 and A*2601 by 42%, respectively.

Cw1 (63%) and Cw3 (71%) with 14% assigning Cw9, were corroborated as Cw*0102 (37%) and Cw*0303 (35%), respectively.

The likely B-C loci associations may be B*1501-Cw*0303 and B*5502-Cw*0102. However, it should be noted that B*1501-Cw*0102 is commonly found in Native American donors and that the A*0206-B*1501-Cw*0102 (HF=0.0107) is a commonly found haplotype in North American Natives (4).



Cell 1324. The presence of B48 (85%) muddled the detection of the B40 split in this donor of Japanese and Chinese descent. B61 was assigned by 53%, B60 by 26%, and B40 by 22%. B*4006 and B*4801 were detected by 60% and 37%, respectively.



A2 (100%) and A26 (96%) were validated as A*0206 (40%) and A*2601 (42%), respectively.

Cw3 was well typed, by 71%, with 14% assigning the Cw9 split. However, Cw8 was only detected by 12%. Cw*0303 (35%) and Cw*0803 (40%) were the assigned high-resolution types.

The probable haplotypes were B*4006-Cw*0303, as previously found in cell 906 (as extract 159) from a Japanese donor, and B*4801-Cw*0803, as previously found in cells 1030 (also extract 183) (Hispanic), 1102 (Hispanic), and 1245 (also cell 1182) (Japanese), as well as in extracts 8 (also extract 1), and 255 (Asian). The B*4801-Cw*0803 association was different from the B*4801-Cw*0801 association present in cell 1322 in this same study.

References

1. Arnett KL, Adams EJ, Gumperz JE, et al. Expression of an unusual Bw4 epitope by a subtype of HLA-B8 (B*0802). *Tissue Antigens* 1995;46:316.
2. Darke C, Fussell H, Street J, et al. Serological and molecular identification of an HLA-B8 variant-HLA-B8Jon (B*0802). *Experimental and Clinical Immun* 1996;13:139.
3. Arnett KL, Huang W, Valiante NM, et al. The Bw4/Bw6 difference between HLA-B*0802 and HLA-B*0801 changes the peptides endogenously bound and the stimulation of alloreactive T cells. *Immunogenetics* 1998; 48:56.
4. Cao K, Hollenbach J, Shi X, et al. Analysis of the frequencies of HLA-A, B, and C alleles and haplotypes in the five major ethnic groups of the United States reveals high levels of diversity in these loci and contrasting distribution patterns in these populations. *Hum Immunol* 2001;62:109.

NEXT MAILING DATE: April 9, 2008

Marie Lau, Min S. Park, J. Michael Cecka, and Elaine F. Reed

INVESTIGATOR		DNA EXTRACT #409						method
CTR	NAME	A1	A2	B1	B2	C1	C2	
5488	Adams, Sharon	*0116N	*020101	*080101	*440201/19N	*05	*07	SSP, RSSO, SBT
4691	Ali, M. Ashraf	*01	*02	*08	*44	*05	*07	ELISA
2300	Allegheny Ge	*01	*02	*08	*44	*05	*06	SSP
745	Anthony Nola	*0116N	*02010101	*080101	*44020101	*050101	*070101	SSO, SSP, SBT
4345	Blasczyk, Rai	*0101/01N/04N/22N	*0201/01L/09/43N+	*0801/19N	*4402/02S/19N+	*0501/03	*0701/06/18/52	
5106	Brown, Colin	*01	*02	*08	*4402/19N/23N+	*05	*07	PCR-SSOP
785	Chan, Soh Ha	*0116N	*02	*0801/02/08N/19N	*4402/09/19N/27	*0501/03/04//+	*0701/06/18/28//+	
3224	Chen, Dongfen	*0101/01N	*0201	*0801	*4402/19N	*0501	*0701/06/18	SBT, SSO
3625	Darke, Christ	*01	*02	*08	*44	*05	*07	PCR-SSP
1108	Davis, Mary	*0116N	*0201	*0801	*4402	*0501	*0701	SSO, SSP
5891	Du, Keming	*0101/04N/09	*0201/04/07/09	*0801	*4402			PCR-SBT
3186	Dunckley, Hea	*01	*02	*08	*44	*05	*07	SSP
3766	Dunn, Paul	*01	*02	*08	*44	*05	*07	SSO
3428	Eckels/Utah	*01	*02	*08	*44			SSOP
4251	Ellis, Thomas	*0116N	*0201	*0801	*4402/19N	*0501/03	*0701/06/18/52	PCR-SSO, SEQ
762	Fischer&Mayr	*0116N	*0201/09	*0801	*4402/27	*0501/03	*0701/06	RVSSO, SBT
3135	Fischer, John	*0116N	*0201	*0801	*4402/19N	*0501/03	*0701/06/18	SBT, PCR-SSO
729	Fotino, Maril	*0101	*0201	*0801	*4402	*0501	*0701	SSO, SSP
810	Hamdi, Nuha	*0101/01N//02/04N+	*0201/01L/07/09+	*0827	*4402/02S/19N+	*050101	*070101	SSO
1461	Hidajat, Mela	*0116N	*0201/*9207/09	*0801	*4402	*0501/14/15	*0701	SSO, SSP
615	Holdsworth, R	*0116N	*0201/09/43N/66+	*0801/19	*4402/19N/27	*0501/03	*0701/06/18/52	
2344	Hurley&Hartz	*0116N	*02010101/010102L+	*080101/19N	*44020101+	*050101/0104/03	*070101/0102+	SBT
797	Kato, Shunich	*0101/04N	*0201	*0801	*4402/09N	*0501/03/04	*0701/06/18+	SSO, SBT
87	Land, Geoff	*0116N	*0201	*0801	*4402	*0501	*0701	
278	Lee, Jar-How	*0101/11N/16N/18N	*0201/24/66/94N+	*0801/22/30N	*4402	*0501/07N/13	*0701/21/24/36	SSP, RVSSOP
640	Lee, Kyung Wh	*0116N	*0201/09/43N/66+	*0801/19N	*4402/19N/27	*0501/03/04	*0701/06/18/28+	PCR-SBT
9916	McIntyre, Joh	*0116N	*0201	*080101	*44020101	*0501/14/15	*0701	
794	Merenmies, Ju	*0116N	*0201	*0801	*4402	*0501	*0701/52	SSO, SBT, SSP
8021	Montague, Bri	*0101/02/04N/06+	*020101-0104/0106+	*0801/06-08N/10+	*4402/11/19N+	*0501/03-07/11+	*0701/06/07/09+	PCR-SSP
5323	Murad, Shahna	*01	*02	*08	*44	*05	*07	PCR-SSP
733	Mytilineos, J	*01	*02	*08	*44	*05	*07	SSO
5107	Noche, Olivia	*0116N	*02010101/010102L+	*080101/0103	*44020101+	*050101/0103	*070101-0104	SSP
8022	Olerup, Olle	*0116N	*0201	*0801	*4402	*0501	*0701	SSP
8000	Pahl, Armin	*01	*02	*08	*44			SSO
3648	Pereira, Noem	*01	*02	*08	*44	*05	*07	RVPCR-SSO
3966	Permpikul&Ve	*01	*0201	*08	*44	*0501	*0701/06	PCR-SSP
2400	Phelan, Donna	*0116N	*0201	*0801	*4402	*0501	*0701	RVSSO, SSP
3753	Reed, Elaine	*0116N	*0201	*0801/02	*4402/09/19N	*0501/04/0802	*0701/06/09/18/28	SBT, SSP
1694	Sauer&Guttwa	*01	*02	*08	*44	*05	*07	SSP
3545	Scornik, Juan	*0116N	*0201/43N	*0801	*4402/19N	*0501	*0701/06/18	SSOP, SBT
5096	Seoul Red Cr	*01	*02	*08	*44			
8042	Shainberg, Br	*0116N	*0201	*0801	*4402	*0501	*0701	
735	Smith/MI	*01	*02	*08	*44	*05	*07	
740	Snider, Denis	*0116N	*0201	*0801	*4402/27	*0501	*0701	
746	Stamm, Luz	*0116N	*0201	*0801	*4402	*0501	*0701	
13	Tagliere, Jac	*0116N	*0201	*0801	*4402	*0501	*0701	SSP
4021	Trachtenberg	*01	*02	*08	*44	*05	*0701/43/44	RVSSOP
5462	Turner, E.V.	*0116N	*0201	*0801	*4402	*0501	*0701	SSO, SSP, SEQ

INVESTIGATOR	DNA EXTRACT #410 (Caucasian)		B1	B2	C1	C2	method
CTR NAME	A1	A2					
5488 Adams, Sharon	*01	*68	*08	*40	*03	*07	SSP, RSSO, SBT
4691 Ali, M. Ashraf	*01	*68	*08	*40			3LISA
2300 Allegheny Ge	*01	*68	*08	*40	*03	*07	SSP
745 Anthony Nola	*01010101	*680102	*0819N	*4001	*030401	*070101	SSO, SSP, SBT
4345 Blasczyk, Rai	*0101/01N/04N/22N	*6801/11N/33	*0801/19N	*4001/55	*0304	*0701/06/18/52	
5106 Brown, Colin	*01	*6801/06/07/11N+	*08	*4001/07/22N+	*0304/05/08-10+	*07	PCR-SSOP
785 Chan, Soh Ha	*0101/04N/15N/17+	*6801/03/11N/33+	*0801/04/08/19N+	*4001/07/43/55	*0304/08/32/38	*0701/06/16/18+	
3224 Chen, Dongfen	*0101/01N	*6801/11N	*0801	*4001	*0304	*0701/06/18	SBT, SSO
3625 Darke, Christ	*01	*68	*08	*40(B60)	*03(Cw10)	*07	PCR-SSP
1108 Davis, Mary	*0101	*6801	*0819N	*4001	*0304	*0701	SSO, SSP
5891 Du, Keming	*0101	*6801	*0801/19N	*4001			PCR-SBT
3186 Dunckley, Hea	*01	*68	*08	*4001/22N/30+	*0304-06/08-10+	*07	SSP
3766 Dunn, Paul	*01	*68	*08	*4001/22N/38+	*0304/06/08-09+	*07	SSO
3428 Eckels/Utah	*01	*68	*08	*40			SSOP
4251 Ellis, Thomas	*0101	*6801/11N	*0819N	*4001	*0304	*0701/06/18/52	PCR-SSO, SEQ
762 Fischer&Mayr	*0101	*6801	*0801	*4001	*0304	*0701/06	RVSSO, SBT
3135 Fischer, John	*0101	*6801	*0819N	*4001	*0304	*0701/06/18	SBT, PCR-SSO
729 Fotino, Maril	*0101	*6821	*0819N	*4001	*0304	*0701	SSO, SSP
810 Hamdi, Nuha	*0101/01N/04N/09+	*6801/07/11N/17+	*0801/08N/15/18+	*4001/22N/38+	*030201	*070101	SSO
1461 Hidajat, Mela	*0101	*6801	*0819N	*4001/62/65	*0304/34	*0701	SSO, SSP
615 Holdsworth, R	*010101/01N/04N+	*6801/11N/33	*0801/19N	*4001/55	*0304	*0701/06/18/52	
2344 Hurley&Hartz	*01010101/010102N+	*680102/11N/33	*080101/19N	*400101/0102+	*030401/0403	*070101/0102+	SBT
797 Kato, Shunich	*0101	*6801/11N	*0819N	*4001	*0304/08	*0701/06/18+	SSO, SBT
87 Land, Geoff	*0101	*6801	*0819N	*4001	*0304	*0701	
278 Lee, Jar-How	*0101/11N/16N/18N	*6801/21/32/33	*0819N	*4001/54/55/62+	*0301/23/24	*0701/21/24/36	SSP, RVSSOP
640 Lee, Kyung Wh	*0101/04N/22N/26	*6801/11N/33/41	*0801/19N	*4001/55	*0304/08/32/38	*0701/06/16/18+	PCR-SBT
9916 McIntyre, Joh	*0101	*680102	*0819N	*4001	*0304/34/37/44+	*0701	SSP, SBT
794 Merenmies, Ju	*0101	*6801	*0819N	*4001	*0304	*0701/52	SSO, SBT, SSP
8021 Montague, Bri	*0101/04N/06/09+	*6801/02/06/07+	*0801/06-08N/10+	*4001/22N/30+	*0302/04-06/08+	*0701/06/07/09+	PCR-SSP
5323 Murad, Shahna	*01	*68	*08	*(B60)	*03	*(Cw10)	PCR-SSP
733 Mytilineos, J	*01	*68	*08	*40(B60)	*03	*07	SSO
5107 Noche, Olivia	*01010101/0102+	*680101-0104	*0819N	*400101-0103+	*030401-0404	*070101-0104	SSP
8022 Olerup, Olle	*0101	*6801	*0819N	*4001	*0304	*0701	SSP
8000 Pahl, Armin	*01	*68	*08	*40			SSO
3648 Pereira, Noem	*01	*68	*08	*40	*03	*07	RVPCR-SSO
2966 Permpikul&Ve	*01	*68	*08	*4001	*0304	*0701/06	PCR-SSP
2400 Phelan, Donna	*0101	*6801	*0819N	*4001	*0304	*0701	RVSSO, SSP
3753 Reed, Elaine	*0101/17	*6801/03/11N	*0819N	*4001	*0304/08/32	*0701/06/16/18/27	SBT, SSP
1694 Sauer&Guttwa	*01	*68	*08	*40	*03	*07	SSP
3545 Scornik, Juan	*0101	*680102/11N	*0819N	*4001	*030401	*0701/06/18	SSOP, SBT
5096 Seoul Red Cr	*01	*68	*08	*40			
8042 Shainberg, Br	*0101	*6801	*0819N	*4001	*0304	*0701	
735 Smith/MI	*01	*68	*08	*40	*03	*07	
740 Snider, Denis	*0101	*6801	*0819N	*4001	*0304	*0701	
746 Stamm, Luz	*0101	*6801/21	*0819N	*4001	*0304	*0701	
13 Tagliere, Jac	*0101	*6801	*0819N	*4001	*0304	*0701	SSP
4021 Trachtenberg	*01	*68	*08	*40	*03	*07	RVSSOP
5462 Turner, E.V.	*0101	*6801	*0819N	*4001	*0304	*0701	SSO, SSP, SEQ

CTR	INVESTIGATOR NAME	DNA EXTRACT #411 A1	A2	B1	B2	C1	C2	method
5488	Adams, Sharon	*010101	*030101	*0802	*140201	*07	*08	SSP, RSSO, SBT
4691	Ali, M. Ashraf	*01	*03	*08	*14	*07	*08	ELISA
2300	Allegheny Ge	NT						
745	Anthony Nola	*01010101	*030101	*0802	*140201	*0701	*0802	SSO, SSP, SBT
4345	Blasczyk, Rai	*0101/01N/04N/22N	*0301/01N/20/21N+	*0802	*1402	*0701/06/18/52	*0802	
5106	Brown, Colin	*01	*03	*0802	*1402	*07	*08	PCR-SSOP
785	Chan, Soh Ha	*0101/04N/15N/17+	*0301/03N/08/20+	*0802	*1402	*0701/06/18/40+	*0802/05	
3224	Chen, Dongfen	*0101/01N	*0301/01N	*0802	*1402	*0701/06/18	*0802	SBT, SSO
3625	Darke, Christ	*01	*03	*0802	*14(B65)	*07	*08	PCR-SSP
1108	Davis, Mary	*0101	*0301	*0802	*1402	*0701	*0802	SSO, SSP
5891	Du, Keming	*0101	*0301	*0802	*1402			PCR-SBT
3186	Dunckley, Hea	*01	*03	*0802/03	*1402/03	*07	*08	SSP
3766	Dunn, Paul	*01	*03	*0802	*1402	*07	*0802/05	SSO
3428	Eckels/Utah	*01	*03	*0802	*1402			SSOP
4251	Ellis, Thomas	*0101	*0301	*0802	*1402	*0701/06/18/52	*0802	PCR-SSO, SEQ
762	Fischer&Mayr	*0101	*0301	*0802	*1402	*0701/06	*0802	RVSSO, SBT
3135	Fischer, John	*0101	*0301	*0802	*1402	*0701/06/18	*0802	SBT, PCR-SSO
729	Fotino, Maril	*0101	*0301	*0802	*1402	*0701	*0802/12	SSO, SSP
810	Hamdi, Nuha	*0101/01N/02/04N+	*0301/01N/03N/04+	*0802	*1402	*070101	*0802	SSO
1461	Hidajat, Mela	*0101	*0301	*0802	*1402	*0701	*0802	SSO, SSP
615	Holdsworth, R	*0101/01N/04N/22N	*0301/01N/20/21N+	*0802	*1402	*0701/06/18/52	*0802	
2344	Hurley&Hartz	*01010101/010102N+	*03010101/010102N+	*0802	*140201	*070101/0102+	*0802	SBT
797	Kato, Shunich	*0101	*0301	*0802	*1402	*0701/06/18	*0802	SSO, SBT
87	Land, Geoff	*0101	*0301	*0802	*1402	*0701	*0802	
278	Lee, Jar-How	*0101/06/11N/16N+	*0301/13-15/17+	*0802	*1402	*0701/21/24	*0802	SSP, RVSSOP
640	Lee, Kyung Wh	*0101/04N/17/22N	*0301/08/20/21N+	*0802	*1402	*0701/06/18/40+	*0802/05	PCR-SBT
9916	McIntyre, Joh	*01010101	*030101	*0802	*140201	*0701	*0802	SSP, SBT
794	Merenmies, Ju	*0101	*0301	*0802	*1402	*0701/52	*0802	SSO, SBT, SSP
8021	Montague, Bri	*0101/02/04N/06+	*0301-04/07/11N+	*0802/03	*1402-04	*0701/06/07/09+	*0802/04/05/07+	PCR-SSP
5323	Murad, Shahna	*01	*03	*08	*(B65)	*07	*08	PCR-SSP
733	Mytilineos, J	*01	*03	*0802	*1402	*07	*08	SSO
5107	Noche, Olivia	*01010101/0102+	*03010101/010103+	*08	*1402	*070101-0104	*0802	SSP
8022	Olerup, Olle	*0101	*0301	*0802	*1402	*0701	*0802	SSP
8000	Pahl, Armin	*01	*03	*08	*14			SSO
3648	Pereira, Noem	*01	*03	*08	*14	*07	*08	RVPCR-SSO
3966	Permpikul&Ve	*01	*03	*0802	*14	*0701/06	*0802	PCR-SSP
2400	Phelan, Donna	*0101	*0301	*0802	*1402	*0701	*0802	RVSSO, SSP
3753	Reed, Elaine	*0101/17	*0301/08	*0802	*1402	*0701/06/18/40	*0802/05	SBT, SSP
1694	Sauer&Guttwa	*01	*03	*08	*14	*07	*08	SSP
3545	Scornik, Juan	*0101	*0301	*0802	*1402	*0701/06/18	*0802	SSOP, SBT
5096	Seoul Red Cr	*01	*03	*08	*14			
8042	Shainberg, Br	*0101	*0301	*0802	*1402	*0701	*0802	
735	Smith/MI	*01	*03	*08	*14	*07	*08	
740	Snider, Denis	*0101	*0301	*0802	*1402	*0701	*0802	
746	Stamm, Luz	*0101	*0301	*0802	*1402	*0701	*0802	
13	Tagliere, Jac	*010101	*030101	*0802	*1402	*0701	*0802	SSP
4021	Trachtenberg	*01	*03	*0802	*1402/04	*07	*08	RVSSOP
5462	Turner, E.V.	*0101	*0301	*0802	*1402	*0701	*0802	SSO, SSP, SEQ

INVESTIGATOR	DNA EXTRACT #412 (Hispanic)		B1	B2	C1	C2	method
CTR NAME	A1	A2					
5488 Adams, Sharon	*0211	*2453	*4004		*0304		SSP, RSSO, SBT
4691 Ali, M. Ashraf	*02	*24	*40		*03	*15	ELISA
2300 Allegheny Ge	NT						
745 Anthony Nola	*0211	*2453	*4004		*030401		SSO, SSP, SBT
4345 Blasczyk, Rai	*0211/69	*2453	*4004		*0304		
5106 Brown, Colin	*0211/69	*240205/15/51-53+	*4004/64		*0304-06/09/10/23-25/35		PCR-SSOP
785 Chan, Soh Ha	*0211/69	*2453	*4004		*0304		
3224 Chen, Dongfen	*0211	*2453	*4004	*4004	*0304	*0304	SBT, SSO
3625 Darke, Christ	*02	*24	*40 (B61)		*03 (Cw10)		PCR-SSP
1108 Davis, Mary	*0211/69	*2415/17/41/53/57	*4004		*0304		SSO, SSP
5891 Du, Keming	*0211	*2402	*4004	*4006			PCR-SBT
3186 Dunckley, Hea	*02	*24	*4004		*0304		SSP, +SBT-B, C
3766 Dunn, Paul	*0211/69	*24	*4004/64		*0304-06/09/19/23-27/32/35/37+		SSO
3428 Eckels/Utah	*02	*24	*4004/64	*4004/64			SSOP
4251 Ellis, Thomas	*0211	*2453	*4004	*4004	*0304	*0304	PCR-SSO, SEQ
762 Fischer&Mayr	*0211/69	*2453	*4004		*0304		RVSSO, SBT
3135 Fischer, John	*0211	*2453	*4004		*0304		SBT, PCR-SSO
729 Fotino, Maril	*0211	*2453/02	*4004		*0304		SSO, SSP
810 Hamdi, Nuha	*0211/69	*2402/09N/11N/14+	*4004/64	*4004/64	*030401	*0305	SSO
1461 Hidajat, Mela	*0211	*2453	*4004		*0304		SSO, SSP
615 Holdsworth, R	*0211/69	*2453	*4004		*0304		
2344 Hurley&Hartz	*0211/69	*2453	*4004		*030401/0403		SBT
797 Kato, Shunich	*0211/69	*2402/09N/11N+	*4004		*0304		SSO, +SBT-B, C
87 Land, Geoff	*0211	*2453	*4004	*4004	*0304	*0304	
278 Lee, Jar-How	*0211	*2453	*4004/64		*0304/23/24		SSP, RVSSOP
640 Lee, Kyung Wh	*0211/69	*2453	*4004		*0304		PCR-SBT
9916 McIntyre, Joh	*0211	*2453	*4004		*0304	*0304/32/34/37+	SSP, SBT
794 Merenmies, Ju	*0211	*2453	*4004		*0304		SSO, SBT, SSP
8021 Montague, Bri	*0202/03/05/0604+	*2402/03/07/09N+	*4002/04/06/08-10+		*0302/04-06/08/09+		PCR-SSP
5323 Murad, Shahna	*02	*24	*(B61)		*03		PCR-SSP
733 Mytilineos, J	*02	*24	*40 (B61)		*03		SSO
5107 Noche, Olivia	*0211/45/69	*2415/17/41/53	*4004		*030401-0404		SSP
8022 Olerup, Olle	*0211	*2453	*4004	*4004/64	*0304		SSP
8000 Pahl, Armin	*02	*24	*40				SSO
3648 Pereira, Noem	*02	*24	*40		*03		RVPCR-SSO
3966 Permpikul&Ve	*0211	*24	*40		*03		PCR-SSP
2400 Phelan, Donna	*0211	*2453	*4004		*0304		RVSSO, SSP
3753 Reed, Elaine	*0211	*2453	*4004		*0304		SBT, SSP
1694 Sauer&Guttwa	*02	*24	*40		*03		SSP
3545 Scornik, Juan	*0211	*2453	*4004		*030401		SSOP, SBT
5096 Seoul Red Cr	*02	*24	*40	*40			RVSSOP
8042 Shainberg, Br	*0211	*2453	*4004	*4064	*0304	*0304	
735 Smith/MI	*02	*24	*40		*03		
740 Snider, Denis	*0211	*2415/17/41/53/57	*4004		*0304		
746 Stamm, Luz	*0211/90	*2453	*4004/64		*0304		
13 Tagliere, Jac	*0211	*2453	*4004		*0304		SSP
4021 Trachtenberg	*02	*24	*4004/64		*03		RVSSOP
5462 Turner, E.V.	*0211	*2453	*4004		*0304		SSO, SSP, SEQ

SUMMARY

<p>Extract 409 <u>48 labs</u></p> <p>A*01 46%</p> <p>A*0101 4%</p> <p>A*0116N 50%</p> <p>A*01 100% TOTAL</p> <p>A*02 56%</p> <p>A*0201 40%</p> <p>A*020101 2%</p> <p>A*02010101 2%</p> <p>A*02 100% TOTAL</p> <p><u>48 labs</u></p> <p>B*08 42%</p> <p>B*0801/19N 6%</p> <p>B*080101/19N 2%</p> <p>B*0801 42%</p> <p>B*080101 6%</p> <p>B*0827 2%</p> <p>B*08 100% TOTAL</p> <p>B*44 44%</p> <p>B*4402/19N/27 8%</p> <p>B*4402/19N 8%</p> <p>B*440201/19N 2%</p> <p>B*4402/27 7%</p> <p>B*4402 27%</p> <p>B*44020101 4%</p> <p>B*44 100% TOTAL</p> <p><u>44 labs</u></p> <p>Cw*05 48%</p> <p>Cw*0501/03 14%</p> <p>Cw*0501 34%</p> <p>Cw*050101 4%</p> <p>Cw*05 100% TOTAL</p> <p>Cw*07 41%</p> <p>Cw*0701/06/18/52 9%</p> <p>Cw*0701/06/18 7%</p> <p>Cw*0701/06 5%</p> <p>Cw*0701/52 2%</p> <p>Cw*0701 30%</p> <p>Cw*070101 4%</p> <p>Cw*07 98% TOTAL</p>	<p>Extract 410 (Caucasian) <u>48 labs</u></p> <p>A*01 54%</p> <p>A*0101 44%</p> <p>A*01010101 2%</p> <p>A*01 100% TOTAL</p> <p>A*68 50%</p> <p>A*6801/11N/33 4%</p> <p>A*680102/11N/33 2%</p> <p>A*6801/11N 7%</p> <p>A*680102/11N 2%</p> <p>A*6801 29%</p> <p>A*680102 4%</p> <p>A*6821 2%</p> <p>A*68 100% TOTAL</p> <p><u>48 labs</u></p> <p>B*08 42%</p> <p>B*0801/19N 8%</p> <p>B*080101/19N 2%</p> <p>B*0801 4%</p> <p>B*0819N 44%</p> <p>B*08 100% TOTAL</p> <p>B*40 44%</p> <p>B*4001/55 10%</p> <p>B*4001 46%</p> <p>B*40 100% TOTAL</p> <p><u>43 labs</u></p> <p>Cw*03 47%</p> <p>Cw*030201 2%</p> <p>Cw*0304 46%</p> <p>Cw*030401 5%</p> <p>Cw*03 100% TOTAL</p> <p>Cw*07 40%</p> <p>Cw*0701/06/18/52 9%</p> <p>Cw*0701/06/18 7%</p> <p>Cw*0701/06 5%</p> <p>Cw*0701/52 2%</p> <p>Cw*0701 33%</p> <p>Cw*070101 2%</p> <p>Cw*07 100% TOTAL</p> <p>Cw*08 30%</p> <p>Cw*0802/05 9%</p> <p>Cw*0802 61%</p> <p>Cw*08 100% TOTAL</p>	<p>Extract 411 <u>47 labs</u></p> <p>A*01 51%</p> <p>A*0101 41%</p> <p>A*010101 4%</p> <p>A*01010101 4%</p> <p>A*01 100% TOTAL</p> <p>A*03 51%</p> <p>A*0301 41%</p> <p>A*030101 8%</p> <p>A*03 100% TOTAL</p> <p><u>47 labs</u></p> <p>B*08 21%</p> <p>B*0802 79%</p> <p>B*08 100% TOTAL</p> <p>B*14 26%</p> <p>B*1402 66%</p> <p>B*140201 8%</p> <p>B*14 100% TOTAL</p>	<p>Extract 412 (Hispanic) <u>47 labs</u></p> <p>A*02 32%</p> <p>A*0211/69 23%</p> <p>A*0211 45%</p> <p>A*02 100% TOTAL</p> <p>A*24 47%</p> <p>A*2402 2%</p> <p>A*2453 51%</p> <p>A*24 100% TOTAL</p> <p><u>47 labs</u></p> <p>B*40 23%</p> <p>B*4004/64 15%</p> <p>B*4004 62%</p> <p>B*40 100% TOTAL</p> <p><u>43 labs</u></p> <p>Cw*03 30%</p> <p>Cw*0304 63%</p> <p>Cw*030401 7%</p> <p>Cw*03 100% TOTAL</p>
---	---	--	---

CTR	INVESTIGATOR NAME	CELL NO.1321 (Hispanic)	A1	A2	B1	B2	C1	C2	method
745	Anthony Nola		*02010101	*6805	*1401	*4008	*0304	*0802	SSO,SSP,SBT
5106	Brown,Colin		*02	*6805/20	*1401	*4008	*0304/05/09/10+	*0802/04	PCR-SSOP
5232	Charlton,Ron		*0201	*6805	*1401	*4008	*0304	*0802	SSP,RVSSO
4492	Charron,D.		*02	*68	*1401	*4008			
798	Claas,F.H.J.		*020101	*6805	*1401	*4008	*030401	*0802	SSO,SBT
3632	Colombe,Beth		*0201/95/97	*6805	*1401	*4008	*0304	*0802	SSP
3904	Cooper,Shann		*02	*6805/15/20	*1401	*4002	*0302/04-10	*08	PCR-SSP
5130	Costeas,Paul		*0201/30	*6805	*1401	*4008	*0304	*0802	SSP
779	Daniel,Claud		*02//*0250/73	*6805/15/20/36	*1401/07N//+	*4008	*03(Cw10)	*0802/04/05/07+	PCR-SSP
3625	Darke,Christ		*02	*6803-05/20/24	*1401/07N	*4008	*03(Cw10)	*08	PCR-SSP
4269	Dormoy,Anne		*020101	*6805	*1401	*4008	*030401	*0802	PCR-SSP,SBT
3186	Dunckley,Hea		*02	*68	*1401/04/07N	*4002/04/06/08/11+	*0304-06/08-10+	*08	SSP
3766	Dunn,Paul		*02	*6805/20	*1401	*4008	*0304/06/09+	*0802/04/05	SSO
856	Dupont,Bo		*02	*6805/20	*1401/07	*4008	*0304/08/09/23+	*0802/07/01	RVSSO
5214	Eckels/CPMC		*02	*68	*1401	*4008	*03	*08	
2332	Elkhalifa,Mo		*02	*68	*14	*40	*03	*08	SSO
4251	Ellis,Thomas		*0201	*6805	*1401	*4008	*0304	*0802	PCR-SSO,SEQ
762	Fischer&Mayr		*0201/09	*6805	*1401	*4008	*0304	*0802/07	RVSSO,SSP,SBT
729	Fotino,Maril		*0201	*6805	*1401	*4008	*0304	*0802/12	SSO,SSP
8043	Gideoni,Osna		*0201	*6805	*1401/07	*4008	*0304	*0802/12	SSOP,SSP
810	Hamdi,Nuha		*0201/01L/07/09+	*6805/20	*1401	*4008	*030401	*0802	SSO
3808	Hogan,Patric		*02	*6803-05/15/20+	*1401/04/07N	*4008/13/35/75	*0302/04/05/10+	*08	
771	Israel,Shosh		*0201	*6805	*1401	*4008	*030401	*0802	PCR-SSO,SBT
859	Kamoun,Malek		*0201	*6805	*1401	*4008	*0304	*0802	
4337	Kim,Tai-Gyu		*0201	*6805	*1401	*4008	*0304	*0802	SBT
168	Klein,Tirza		*02	*68	*14	*40	*03	*08	PCR-SSP,SSO
278	Lee,Jar-How		*0201/24/66+	*6805/20	*1401	*4008	*0304/23/24/28	*0802	SSP,RVSSOP
759	Lefor,W.M.		*0201/07/09/18+	*6805/20	*1401	*4008	*0304/06/09/19+	*0802/04/05	RVSSO
731	Loewenthal,R		*020101	*6805	*1401	*4008	*0304	*0802	SBT,SSO
8029	Mani,Rama		*02	*68	*14	*40			SSP
792	Moore,S.Brea		*0201/95/97	*6805	*1401	*4008	*0304	*0802	PCR-SSO,SSP
774	Paik,Young		*02	*6805/15/20	*1401/07N	*4008	*0302/04-10/23+	*08	SSP
4336	Park,Myoung		*02	*6805/20	*1401/07N	*4008	*03	*0802/07	
16	Pidwell,Dian		*020101	*6805	*1401	*4008	*030401//*0328	*0802//*0804	
4689	Rajczy,Katal		*02	*68	*1401	*4008	*03	*08	PCR-SSO,SSP
5200	Reinke,Dennis		*02	*68	*14(B64)	*40(B61)	*03(Cw10)	*08	SSP
1160	Rosen-Bronso		*02	*68	*1401	*4008	*03	*08	
793	Rubocki,Ron		*02	*68	*14(B64)	*4008	*03	*15/*12	SSP
4948	Sage,Deborah		*0201	*6805	*1401	*4008	*0304/28	*0802/04	SBT
8001	Sheikh,Maqso		*02	*68	*1401	*4008	*0304/06/09/23+	*08	RVSSOP,SSP
4744	Tanaka,Hidem		*020101	*6805	*1401	*4008			
769	Tavoularis,S		*0201/01L	*6805	*1401	*4008	*0304	*0802	SSO,SSP,SBT
747	Tiercy,Jean-		*02010101	*6805	*1401	*4008	*030401/0403	*0802	PCR-SSO,SBT
5451	Tilanus,Marc		*020101	*6805	*1401	*4008	*030401	*0802	SBT
5462	Turner,E.V.		*0201	*6805	*1401	*4008	*0304	*0802	SSO,SSP,SEQ
5642	Varnavidou-N		*02	*68	*14	*40	*03	*08	PCR-SSP,SSO
705	Watkins,Davi		*02010101g	*6805/15/20/36	*1401/07N	*4008	*03	*0801g	

CTR	INVESTIGATOR NAME	CELL NO.1322 (Hispanic)	A1	A2	B1	B2	C1	C2	method
745	Anthony Nola		*020601	*680301	*3512	*480101	*040101	*080101	SSO,SSP,SBT
5106	Brown,Colin		*0206/10/21/28+	*6803	*3512	*4801/09	*04	*0801/08	PCR-SSOP
5232	Charlton,Ron		*0206	*6803	*3512	*4801	*0401	*0801	SSP,RVSSO
4492	Charron,D.		*02	*68	*35	*48			
798	Claas,F.H.J.		*020601	*680301	*3512	*480101	*040101	*080101	SSO,SBT
3632	Colombe,Beth		*0206	*6803	*3512	*4801	*0401	*0801	SSP
3904	Cooper,Shann		*02	*68	*35	*48	*04	*08	PCR-SSP
5130	Costeas,Paul		*0206/28/41	*6803	*3512	*4801	*0401	*0801	SSP
779	Daniel,Claud		*02	*68	*35	*48	*04	*080101/0102/03+	PCR-SSP
3625	Darke,Christ		*02	*68	*3512	*4801/09/11/16	*04	*08	PCR-SSP
4269	Dormoy,Anne		NT						
3186	Dunckley,Hea		*02	*68	*35	*48	*04	*08	SSP
3766	Dunn,Paul		*02	*6803	*3512	*4801/09/11	*04	*0801/08	SSO
856	Dupont,Bo		*0206/10/21/28+	*6803/04/24	*3502/04/09/12	*4801/09/10/12/15	*0401+	*0801/03/04/08+	RVSSO
5214	Eckels/CPMC		*02	*6803	*3512	*48	*04	*08	
2332	Elkhalifa,Mo		*02	*68	*35	*48	*04	*08	SSO
4251	Ellis,Thomas		*0206	*6803	*3512	*4801	*0401/28/30	*0801	PCR-SSO,SEQ
762	Fischer&Mayr		*0206	*6803	*3512	*4801/09	*0401/09N	*0801	RVSSO,SSP,SBT
729	Fotino,Maril		*0206	*6803	*3512	*4801	*0401	*0801	SSO,SSP
8043	Gideoni,Osna		*0206	*6803	*3512	*4801/09/11	*0401	*0801	SSOP,SSP
810	Hamdi,Nuha		*0238	*680301	*3512	*4801/09/11	*040101	*0802	SSO
3808	Hogan,Patric		*02	*6803-05/15/20+	*3510/12/13/16+	*48	*04	*08	
771	Israel,Shosh		*020601	*680301	*3512	*480101	*040101	*080101	PCR-SSO,SBT
859	Kamoun,Malek		*0206	*6803	*3512	*4801/09	*0401	*0801	
4337	Kim,Tai-Gyu		*0206	*6803	*3512	*4801	*0401	*0801	SBT
168	Klein,Tirza		*02	*68	*35	*48	*04	*08	PCR-SSP,SSO
278	Lee,Jar-How		*0206/91	*6803	*3512	*4801/09	*0401/18-20	*0801	SSP,RVSSOP
759	Lefor,W.M.		*0206/10/21/28+	*6803	*3512	*4801/09/11	*0401/05/07/10+	*0801/08	RVSSO
731	Loewenthal,R		*020601	*680301	*3512	*480101	*040101/09N/28+	*080101/10	SBT,SSO
8029	Mani,Rama		*02	*68	*35	*48			SSP
792	Moore,S.Brea		*0206	*6803	*3512	*4801/09	*0401	*0801	PCR-SSO,SSP
774	Paik,Young		*0206/91	*68	*35	*48	*04	*08	SSP
4336	Park,Myoung		*02	*6803/04/24	*35	*48	*04	*08	
16	Pidwell,Dian		*020601	*680301	*3512	*480101	*040101/30//*0429	*080101//*0810	
4689	Rajczy,Katal		*02	*68	*3512/22	*4801/03/04/09-13	*04	*08	PCR-SSO,SSP
5200	Reinke,Dennis		*02	*68	*35	*48	*04	*08	SSP
1160	Rosen-Bronso		*02	*6803	*3512	*48	*04	*08	
793	Rubocki,Ron		*02	*68	*35	*48	*04	*08	SSP
4948	Sage,Deborah		*0206	*6803	*3512	*4801/09	*04	*08	SBT
8001	Sheikh,Maqso		*02	*68	*35	*48	*04	*08	RVSSOP,SSP
4744	Tanaka,Hidem		*020601	*680301	*3512	*480101			
769	Tavoularis,S		*0206	*6803	*3512	*4801	*0401/28/30	*0801	SSO,SSP,SBT
747	Tiercy,Jean-		*020601	*680301	*3512	*480101	*0401	*080101	PCR-SSO,SBT
5451	Tilanus,Marc		*020601	*680301	*3512	*480101	*040101	*080101	SBT
5462	Turner,E.V.		NT						
5642	Varnavidou-N		*02	*68	*35	*48	*04	*08	PCR-SSP,SSO
705	Watkins,Davi		*02010101g	*680101g	*350101g	*480101g	*04010101g	*08	

CTR	INVESTIGATOR NAME	CELL NO.1323 (Asian/Cauc/NatAm)	A1	A2	B1	B2	C1	C2	method
745	Anthony Nola		*020601	*260101	*550201	*15010101	*010201	*030301	SSO,SSP,SBT
5106	Brown,Colin		*0206/10/21/28+	*26	*5502/19/23/26	*1501/33/60/71/73+	*0102/06-08/11+	*0303/13/20N+	PCR-SSOP
5232	Charlton,Ron		*0206	*2601	*5502	*1501	*0102	*0303	SSP,RVSSO
4492	Charron,D.		*0206/91/*9206	*2601	*5502/26	*1501/70	*0102/15-18	*0303/11/30	PCR-SSP
798	Claas,F.H.J.		*020601	*260101	*550201	*15010101	*010201	*030301	SSO,SBT
3632	Colombe,Beth		*0206	*2601	*5502	*1501	*0102	*0303	SSP
3904	Cooper,Shann		*02	*26	*55	*15010101/0102-0104	*01	*0303/11/13	PCR-SSP
5130	Costeas,Paul		*0206	*2601	*5502	*1501	*0102	*0303	SSP
779	Daniel,Claud		*02	*26	*55	*15(B62)	*01	*03(Cw9)	PCR-SSP
3625	Darke,Christ		*02	*26	*55	*15(B62)	*01	*03(Cw9)	PCR-SSP
4269	Dormoy,Anne		NT						
3186	Dunckley,Hea		*02	*26	*55	*1501/04/05/07/26N+	*01	*0303/11-13/18+	SSP
3766	Dunn,Paul		*02	*26	*55	*1501/01N/33-34/60+	*01	*0303/11/12/20N+	SSO
856	Dupont,Bo		*0206/10/21/28+	*2601/02/10/15+	*5503	*1501/26N/33/34	*0102-08/11/13+	*0303/05/11/13+	RVSSO
5214	Eckels/CPMC		*02	*26	*55	*15	*01	*03	
2332	Elkhalifa,Mo		*02	*26	*55	*15	*03	*03	SSO
4251	Ellis,Thomas		*0206	*2601	*5502	*1501	*0102	*0303/20N	PCR-SSO,SEQ
762	Fischer&Mayr		*0206	*2601	*5502	*1501	*0102	*0303	RVSSO,SSP,SBT
729	Fotino,Maril		*0206	*2601	*5502	*1570	*0102	*0303	SSO,SSP
8043	Gideoni,Osna		*0206	*2601	*5502/07/12/16	*1501/34/50	*0102/10/11	*0303	SSOP,SSP
810	Hamdi,Nuha		*0276	*260701	*0737/47	*1521	*010201	*030301	SSO
3808	Hogan,Patric		*02	*26	*55	*1501/50/60/71/75+	*01	*0303/11-13/18+	
771	Israel,Shosh		*020601	*260101	*550201	*15010101	*0102	*030301	PCR-SSO,SBT
859	Kamoun,Malek		*0206	*2601	*5502	*1501/97	*01	*0303	
4337	Kim,Tai-Gyu		*0206	*2601	*5502	*1501	*0102	*0303	SBT
168	Klein,Tirza		*02	*26	*55	*15	*01	*03	PCR-SSP,SSO
278	Lee,Jar-How		*0206/91	*2601/23-26/32	*5502/19	*1501/34/79N/81/82+	*0102/11	*0303/20N/22Q	SSP,RVSSOP
759	Lefor,W.M.		*0206/10/21/28+	*2601/10/15-17+	*5502/12/19/23	*1501/33/34/60/71+	*0102/07/11/15+	*0303/11/12/22Q+	RVSSO
731	Loewenthal,R		*020601	*260101	*550201	*150101	*0102	*030301/20N	SBT,SSO
8029	Mani,Rama		*02	*26	*55	*15			SSP
792	Moore,S.Brea		*0206	*2601/17/23/35	*5502	*1501/34/79N	*0102/19	*0303	PCR-SSO,SSP
774	Paik,Young		*0206/51/91	*26	*55	*15	*01	*0303/11/13/20N+	SSP
4336	Park,Myoung		*02	*26	*55	*15	*01	*03	
16	Pidwell,Dian		*020601//*9237	*260101//*2610	*550201	*150101	*010201	*030301/20N	
4689	Rajczyk,Katal		*02	*26	*5502/19/18	*15	*01	*0303/20N/21Q	PCR-SSO,SSP
5200	Reinke,Dennis		*02	*26	*55	*15(B62)	*01	*03(Cw9)	SSP
1160	Rosen-Bronso		*02	*26	*55	*15	*01	*03	
793	Rubocki,Ron		*02	*26	*55	*15(B62)	*01	*03	SSP
4948	Sage,Deborah		*0206	*2601	*5502/23	*1501/73/*9502/04	*0102/11	*0303/20N	SBT
8001	Sheikh,Maqso		*02	*26	*55	*1501/33/34/60/78+	*01	*0303/11/20N+	RVSSOP,SSP
4744	Tanaka,Hidem		*020601	*260101	*550201	*150101			
769	Tavoularis,S		*0206	*2601	*5502	*1501	*0102	*0303/20N	SSO,SSP,SBT
747	Tiercy,Jean-		NT						
5451	Tilanus,Marc		*020601	*260101	*550201	*15010101	*0102	*030301	SBT
5462	Turner,E.V.		*0206	*2601	*5502	*15010101/0102N	*0102	*0303	SSO,SSP,SEQ
5642	Varnavidou-N		*02	*26	*55	*15	*01	*03	PCR-SSP,SSO
705	Watkins,Davi		*02010101g	*260101g	*550101g	*150104/15/28g	*0102g	*030301g	

INVESTIGATOR	CELL NO.1324 (Japanese/Chinese)		B1	B2	C1	C2	method
CTR NAME	A1	A2					
745 Anthony Nola	*020601	*260101	*4006	*480101	*030301	*0803	SSO,SSP,SBT
5106 Brown,Colin	*0206/10/21/28+	*26	*4006/70	*4801/09/11/16	*0303/13/20N/22Q	*0803/06	PCR-SSOP
5232 Charlton,Ron	*0206	*2601	*4006	*4801	*0303	*0803	SSP,RVSSO
4492 Charron,D.	*0206/41/91+	*2601	*4006	*4801	*0303/11/30/31	*0803	PCR-SSP
798 Claas,F.H.J.	*020601	*260101	*400601	*480101	*030301	*0803	SSO,SBT
3632 Colombe,Beth	*0206	*2601	*4006	*4801	*0303	*0803	SSP
3904 Cooper,Shann	*02	*26	*4006	*48	*0303/11/13	*08	PCR-SSP
5130 Costeas,Paul	*0206	*2601	*4006	*4801	*0303	*0803	SSP
779 Daniel,Claud	*02	*26	*40(B61)	*48	*03(Cw9)	*080101/0102/03+	PCR-SSP
3625 Darke,Christ	*02	*26	*40(B61)	*48	*03(Cw9)	*08	PCR-SSP
4269 Dormoy,Anne	NT						
3186 Dunckley,Hea	*02	*26	*4002/04/06/08+	*48	*0303/11-13/18+	*08	SSP
3766 Dunn,Paul	*02	*26	*4006/70	*4801/09/11	*0303/11/12/20N+	*0803/14	SSO
856 Dupond,Bo	*0206/10/21/28+	*2601/02/10/15+	*4006/70	*4801/09/10/12/15	*0303/05/11/13+	*0801/03/04/06+	RVSSO
5214 Eckels/CPMC	*02	*26	*40	*48	*03	*08	
2332 Elkhalfifa,Mo	*02	*26	*40	*48	*03	*08	SSO
4251 Ellis,Thomas	*0206	*2601	*4006	*4801	*0303/20N	*0803	PCR-SSO,SEQ
762 Fischer&Mayr	*0206	*2601	*4006	*4801/09	*0303	*0803	RVSSO,SSP,SBT
729 Fotino,Maril	*0206	*2601	*4006	*4801	*0303	*0803/14	SSO,SSP
8043 Gideoni,Osna	*0206	*2601	*4006	*4801/09/11	*0303	*0803/14	SSOP,SSP
810 Hamdi,Nuha	*020103	*260101	*4004	*1403	*030301	*080101	SSO
3808 Hogan,Patric	*02	*26	*4002/04/06/08+	*48	*0303/11-13/18+	*08	
771 Israel,Shosh	*020601	*260101	*400601	*480101	*030301	*0803	PCR-SSO,SBT
859 Kamoun,Malek	*0206	*2601/17	*4006	*48	*0303	*0803	
4337 Kim,Tai-Gyu	*0206	*2601	*4006	*4801	*0303	*0803	SBT
168 Klein,Tirza	*02	*26	*40	*48	*03	*08	PCR-SSP,SSO
278 Lee,Jar-How	*0206/91	*2601/23-26/32	*4006	*4801/09	*0303/20N/22Q	*0803/14	SSP,RVSSOP
759 Lefor,W.M.	*0206/10/21/28+	*2601/10/15-17+	*4006/70	*4801/09/11	*0303/11/12/22Q+	*0803/14	RVSSO
731 Loewenthal,R	*020601	*260101	*400601	*480101	*030301/20N	*0803	SBT,SSO
8029 Mani,Rama	*02	*26	*40	*48			SSP
792 Moore,S.Brea	*0206/28	*2601/35	*4006	*4801	*0303	*0803	PCR-SSO,SSP
774 Paik,Young	*0206/51/91	*26	*4006	*48	*0303/11/13/20N+	*08	SSP
4336 Park,Myoung	*02	*26	*4006	*48	*03	*08	
16 Pidwell,Dian	*020601//*9237	*260101//*2610	*400601	*480101	*030301/20N	*0803	
4689 Rajczy,Katal	*02	*26	*4006	*4801/04/09-14	*03	*08	PCR-SSO,SSP
5200 Reinke,Dennis	*02	*26	*40(B61)	*48	*03(Cw9)	*08	SSP
1160 Rosen-Bronso	*02	*26	*40	*48	*03	*08	
793 Rubocki,Ron	*02	*26	*40	*48	*03	*08	SSP
4948 Sage,Deborah	*0206	*2601	*4006	*4801/09	*0303/20N	*0801/03	SBT
8001 Sheikh,Maqso	*02	*26	*4006	*48	*0303/11/20N/22Q+	*08	RVSSOP,SSP
4744 Tanaka,Hidem	*020601	*260101	*400601	*480101			
769 Tavoularis,S	*0206	*2601	*4006	*4801	*0303/20N	*0803	SSO,SSP,SBT
747 Tiercy,Jean-	NT						
5451 Tilanus,Marc	*020601	*260101	*400601	*480101	*030301	*0803	SBT
5462 Turner,E.V.	*0206	*2601	*4006	*4801	*0303	*0803	SSO,SSP,SEQ
5642 Varnavidou-N	*02	*26	*40	*48	*03	*08	PCR-SSP,SSO
705 Watkins,Davi	*02010101g	*260101g	*400201-0203g	*480101/0102/0301	*030301g	*0801g	

Cell 1321 (Hispanic)		Cell 1322 (Hispanic)		Cell 1323 (Asian/Cauc/NatAm)		Cell 1324 (Japanese/Chinese)	
<u>47 labs</u>		<u>45 labs</u>		<u>45 labs</u>		<u>45 labs</u>	
A*02	62%	A*02	56%	A*02	56%	A*02	58%
A*0201	21%	A*0206	24%	A*0206	29%	A*020103	2%
A*020101	13%	A*020601	18%	A*020601	13%	A*0206	27%
A*02010101	4%	A*0238	2%	A*0276	2%	A*020601	13%
A*02	100% TOTAL	A*02	100% TOTAL	A*02	100% TOTAL	A*02	100% TOTAL
A*68	38%	A*68	40%	A*26	56%	A*26	58%
A*6805/20	15%	A*6803	40%	A*2601	29%	A*2601	27%
A*6805	47%	A*680301	20%	A*260101	13%	A*260101	15%
A*68	100% TOTAL	A*68	100% TOTAL	A*260701	2%	A*26	100% TOTAL
				A*26	100% TOTAL		
<u>47 labs</u>		<u>45 labs</u>		<u>45 labs</u>		<u>45 labs</u>	
B*14	19%	B*35	38%	B*55	56%	B*40	29%
B*1401/07N	13%	B*3512	62%	B*5502	24%	B*4006/70	9%
B*1401	68%	B*35	100% TOTAL	B*550201	16%	B*4004	2%
B*14	100% TOTAL			B*5503	2%	B*4006	47%
		B*48	44%	B*55	98% TOTAL	B*400601	13%
B*40	15%	B*4801/09/11	9%			B*40	100% TOTAL
B*4002	2%	B*4801/09	13%	B*15	60%		
B*4008	83%	B*4801	16%	B*1501	20%	B*48	47%
B*40	100% TOTAL	B*480101	18%	B*150101	7%	B*4801/09/11	7%
		B*48	100% TOTAL	B*15010101	9%	B*4801/09	7%
				B*1521	2%	B*4801	22%
				B*1570	2%	B*480101	15%
				B*15	100% TOTAL	B*48	98% TOTAL
<u>44 labs</u>		<u>42 labs</u>		<u>43 labs</u>		<u>43 labs</u>	
Cw*03	55%	Cw*04	67%	Cw*01	61%	Cw*03	53%
Cw*0304	34%	Cw*0401	21%	Cw*0102	28%	Cw*0303/20N	7%
Cw*030401	11%	Cw*040101	12%	Cw*010201	9%	Cw*030301/20N	5%
Cw*03	100% TOTAL	Cw*04	100% TOTAL	Cw*01	98% TOTAL	Cw*0303	23%
						Cw*030301	12%
Cw*08	57%	Cw*08	57%	Cw*03	53%	Cw*03	100% TOTAL
Cw*0802	41%	Cw*0801	29%	Cw*0303/20N	7%		
Cw*08	98% TOTAL	Cw*080101	12%	Cw*030301/20N	5%	Cw*08	46%
		Cw*0802	2%	Cw*0303	23%	Cw*0803/14	12%
		Cw*08	100% TOTAL	Cw*030301	12%	Cw*080101	2%
				Cw*03	100% TOTAL	Cw*0803	40%
						Cw*08	100% TOTAL

INTERNATIONAL CELL EXCHANGE

		***** CELL NO.1321 *****					***** CELL NO.1322 *****					***** CELL NO.1323 *****					***** CELL NO.1324 *****												
		V					V					V					V												
		(HISP)					(HISP)					(MIXD)					(ASIA)												
INVESTIGATOR	DAYS	A	A	B	B	C	C	B	A	A	B	B	C	C	B	A	A	B	B	C	C	B							
NAME	OLD	%	8	4	0	3	8	6	%	8	5	8	4	8	6	%	6	5	2	1	3	6	%	6	0	8	3	8	6
		OTHERS					OTHERS					OTHERS					OTHERS												
		X																											
Abbal,M. Pro	8	100	+68	+08					100	+	+	+	+			100	+	+	+	+			98	+	+61	+			
Alonso,Anton	6	90	+686461						90	+	+	+	+	+		90	+	+	+	+	+		90	+	+61	+	+		
Alvarez,Carr	6	100	+686461	+					100	+	+	+	+	+		100	+	+22	+	+	+		100	+	+60	+	+		
Anthony Nola	3	99	+	+	+40				99	+	+	+	+			100	+	+	+	+			99	+	+61	+			
Baker,Judy	7	99	+6864						NT							99	+		+			6601,B42	99	+	+61	+			
Berka,Noured	2	99	+	+	+40	+	+		99	+28	+	+	+			99	+	+	+	+	+		99	+	+	+	+		
Bow,Laurine	6	99	+	+	+08				98	+28	+	+	+			99	+	+	+	+	+		99	+	+60	+	+		
Burger,Joe	3	99	+	+6461	+				99	+28	+	+	+			99	+	+	+	+	+		99	+	+61	+	+		
Chan MD,Soh	6	95	+686461	+	+	+			95	+	+	+	+	+		95	+	+	+	+	+		95	+	+60	+	+	B41	
Charron,D. P	3	100	+	+	+40				100	+	+	+	+			100	+	+	+	+			100	+	+60	+			
Choo,Yoon MD	2	99	+	+65	+	+	+		99	+	+	+	+	+		99	+	+	+	+	+		99	+	+	+	+		
Ciccia/Willi	8	99	+	+64	+				99	+	+	+	+	+		99	+	+	+	+	+		99	+	+60	+	+	CW7	
Claas,F.H.J.	10	90	+68	+40	+				90	+	+	+	+	+		90	+	+	+	+	+		90	+	+60	+	+		
Cooper,E. Sh	3	99	+68646110	+					99	+	+	+	+	+		99	+	+	+	+	+W9	+	99	+	+	+W9	+	+	
Daniel,Dolly	6	99	+68	+					99	+	+	+	+	+		98	+	+	+	+	+		99	+	+60	+			
Darke,Christ	6	85	+686408	+	+	+			85	+	+	+	+	+		85	+	+	+	+	+		85	+	+61	+	+	+	
Du Toit,Erne	10	90	+69	+					90	+	+	+	+		A69	90	+	+	+15	+			90	+	+60	+			
Dunckley,Hea	7	???	+68	+40	+				???	+	+	+	+			???	+10	+	+	+			???	+	+	+	+		
Dunk,Arthur	3	98	+	+	+61	+	+		98	+28	+	+	+	+		98	+	+	+	+	+		98	+	+61	+	+	CW7	
Dunn,Paul Ph	6	95	+6864						95	+	+	+	+			98	+	+	+	+			95	+	+61	+	+		
Eckels/CPMC,	3	80	+68	+					80	+	+	+	+	+		80	+	+	+	+	+		80	+	+61	+	+		
Eckels/Utah,	3	98	+	+	+	+	+		99	+28	+	+	+			98	+	+	+	+	+		99	+	+60	+	+		
Esteves Kond	2	96	+68640810	+	+				96	+	+	+	+	+		96	+	+	+	+	+W9	+	96	+	+61	+W9	+		
Fischer,Joha	6	97	+686440	+					97	+	+	+	+			97	+	+	+	+			97	+	+61	+	+		
Fotino,Maril	2	90	+686461	+	+	+			90	+	+	+	+	+		90	+	+	+	+	+		90	+	+61	+	+		
Foxcroft,Z.K	6	80	+	+					80	+28	+	+	+			80	+	+	+15	+			80	+	+	+	+		
Gideoni,Osna	6	100	+68	+60	+	+			100	+	+	+	+	+		100	+	+	+	+	+		100	+	+61	+	+		
Goggins,R.	3	98	+	+	+40	+	+		99	+28	+	+	+	+		99	+	+	+	+	+		99	+	+	+	+		
Hahn,Amy B.	3	99	+68	+		+	+		99	+	+	+	+	+		99	+	+	+	+	+		99	+	+	+W9	+		
Harville/ACH	2	98	+68	+40W9	+	+			98	+	+	+	+	+		98	+	+	+	+	+W9	+	98	+	+61	W9	+	B40V	
Hirankarn MD	7	80	+	+	+				79	+28	+	+	+			NT							NT						
Hogan,Patric	8	90	+	+6440	+	+	+		90	+28	+	+	+			90	+	+	+	+	+		90	+	+61	+	+		
Holdsworth,R	8	98	+686440	+	+	+			98	+	+	+	+	+		98	+	+	+	+	+		98	+	+	+	+	+	B40V
Hubbell,Char	2	95	+6864						95	+28	+	+	+			95	+	+	+	+			95	+	+60	+	+		
Ichikawa MD,	13	???	+68	48	+				???	+	+	+	+			???	+	+	+	+	+		???	+	+61	+	+	B60,CW7	
Israel,Shosh	5	95	+	+6440	+	+	+		98	+28	+	+	+	+		98	+	+	+	+	+		98	+	+	+	+		
Jaramillo,An	3	98	+68	+40	+	+	+		98	+	+	+	+	+		98	+	+	+	+	+W9	+	95	+	+61	+W9	+		
Keown,Paul M	3	95	+	+	+	+			95	+	+	+	+	+		95	+	+	+	+	+		95	+	+60	+	+		
Kim,Kyeong-H	7	90	+	+	+	+	+		90	+28	+	+	+	+		90	+	+	+	+	+		90	+	+61	+	+	A66,CW2	
Klein,Jon MD	3	93	+686408	+	+				93	+	+	+	+	+		93	+	+	+	+	+		93	+	+61	+	+		
Klein,Tirza	6	95	+686460	+	+				95	+	+	+	+	+		95	+	+	+	+	+		95	+	+60	+	+		
Kvam,Vonnett	3	95	+	+6461	+	+	+		95	+	+	+	+	+		95	+	+	+	+	+		95	+	+61	+	+	CW7,B60	
Lardy,N.M. D	8	90	+	+	+48	+			90	+28	+	+	+			90	+	+	+	+	+		90	+	+61	+	+	CW7	
Lebeck,Laura	2	98	+	+	+08	+	+		98	+28	+	+	+	+		98	+	+	+	+	+		98	+	+61	+	+		
Leech MD,Ste	2	99	+6865	+	+	+			99	+	+	+	+	+		99	+	+	+	+	+		99	+	+60	+	+		
Lefor,W.M. P	3	99	+	+6448	+	+	+		99	+	+	+	+	+		99	+	+	+	+	+		99	+	+	+	+	+	B48V
Lim,Young Ae	7	90	+686461	+	+	+			90	+	+	+	+	+		90	+	+	+	+	+		90	+	+61	+	+	+	
Lo,Raymundo	4	98	+69	+					98	+	+	+	+			98	+	+	+	+			98	+	+60	+		B39,BW4	
Loewenthal M	5	95	+	+	+	+	+		95	+28	+	+	+	+		95	+	+	+	+	+		95	+	+61	+	+		
MacCann,Eile	3	98	+	+6540					98	+28	+	+	+			98	+	+	+	+			98	+	+10	+	+		

INTERNATIONAL CELL EXCHANGE

***** CELL NO.1321 *****										***** CELL NO.1322 *****										***** CELL NO.1323 *****										***** CELL NO.1324 *****									
V					V					V					V																								
I					I					I					I																								
(HISP)					(HISP)					(MIXD)					(ASIA)																								
INVESTIGATOR	A	A	A	B	B	C	C	B		A	A	A	B	B	C	C	B		A	A	A	B	B	C	C	B													
DAYS	B	2	2	1	4	W	W	W		B	2	6	3	4	W	W	W		B	2	2	5	6	W	W	W													
NAME	OLD	%	8	4	0	3	8	6	OTHERS	%	8	5	8	4	8	6	OTHERS	%	6	5	2	1	3	6	OTHERS	%	6	0	8	3	8	6	OTHERS						

Mah,Helen	4	98	+686461	+	+	+			B61V	98	+	+	+	+	+	+			98	+	+	+	+	+	+			98	+	+61	+	+			CW7				
McAlack,Robe	2	98	+69650810	+	+					98	+	+	+	+	+	+			98	+	+	+	+	+W9	+			98	+	+61	+W9	+			CW7				
McAlack-Bala	3	99	+	+	+08	+	+	+		95	+	+	+	+	+	+			98	+	+	+	+	+	+			98	+	+	+	+	+			CW7			
Murad,Shahna	14	95	+	+61					A33,CW7	95	+								96	+	+	+	+	+			CW7	95	+	+60						CW7,B39			
Noche,Olivia	3	NT								NT									NT									NT											
Norin,Allen	2	99	+6864							99	+	+	+	+					99	+	+	+	+					99	+	+61									
Paik,Young K	3	95	+68646110	+	+					95	+	+	+	+	+	+			95	+	+	+	+	+W9	+			95	+	+60	+W9	+	+						
Pais,Maria L	15	99	+68						B35	99	+	+	+	+					99	+	+	+					B18	99	+	60							A66		
Park,Myoung	7	84	+	+	+61	+	+	+		80	+28	+	+	+	+				91	+	+	+	+	+	+			90	+	+61	+								
Permpikul,Ve	6	90	+	+	+61					90	+28	+	+						90	+	+	+	+					90	+	+61									
Phelan,Donna	2	98	+6865						B59,BW4	99	+	+	+	+	+	+			99	+	+	+	+	+	+			97	+	+60	+								
Pidwell,Dian	2	95	+	+6448	+	+	+		B48V	90	+	+	+	+	+	+			90	+	+	+	+	+	+			90	+	+61	+								
Pollack,Mari	2	95	+	+	+61	+	+	+		95	+28	+	+	+	+				95	+	+	+	+	+	+			95	+	+61	+								
Rajczyk,Katal	3	95	+	+	+	+	+	+		95	+28	+	+	+					95	+	+	+	+	+	+			95	+	+	+								
Rosen-Bronso	3	90	+686448							90	+	+	+	+					90	+	+	+	+					90	+	+61									
Rosenberg,J.	4	98	+68	+0810	+	+				98	+	+	+	+	+	+			98	+	+	+	+	+W9	+			98	+	+61	+W9	+							
Rubocki,Rona	3	98	+686440	+	+					98	+	+	+	+					98	+	+	+	+					98	+	+	+	+							
Sauer,Guttwa	3	100	+686440	+	+	+				95	+	+	+	+	+	+			100	+	+	+	+	+	+			95	+	+61	+	+	+						
Semana MD,Gi	13	NT								80	+28	+	+						80	+1022	+							80	+	+10	+								
Sperry,Roxan	2	???	+	+	+40	+	+	+		???	+28	+	+	+	+				???	+	+	+	+	+W9	+			???	+	+61	+W9	+							
Stamm,Luz	3	99	+68644010	+	+				B40V	99	+	+	+	+	+	+			99	+	+	+	+	+W9	+			99	+	+61	+W9	+							
Tagliere,Jac	2	100	+686440	+	+	+				100	+	+	+	+	+	+			100	+	+	+	+	+	+			100	+	+61	+	+							
Tanaka,Hidem	3	???	+68	+6110	+				B61S	???	+	+	+	+	+	+			???	+	+	+	+	+W9	+			???	+	+61	+W9	+					2601		
Tiercy,Jean-	10	???	+	+	+					???	+28	+	+						NT									NT											
Tilanus,Marc	7	90	+	+	+					90	+28	+	+						90	+	+	+	+					90	+	+61									
Varnavidou-N	6	98	+686440							98	+	+	+	+					98	+	+	+	+					98	+	+61									
Vidan-Jeras,	8	90	+68	+	+	+	+			90	+	+	+	+	+				90	+	+	+	+	+	+			90	+	+	+	+	+				CW2		
Walter Reed	3	97	+	+64	+	+	+		B47,BW4	97	+	+	+	+	+				97	+	+	+	+					97	+	+60	+	+							
Ward,Osowski	3	98	+	64	+	+	+		A33	98	+	+	+	+					98	+	+	+	+					98	+	+61	+								
Watkins,Davi	7	90	+	+6440	+	+	+			95	+28	+	+	+					99	+	+	+	+	+	+			95	+	+60									
Wisecarver,J	7	95	+	+	+40					95	+28	+	+						95	+	+	+	+	+				95	+	+	+	+							

 * *
 * SUMMARY TABLE *
 * *

(HISP)
 **** CELL 1321 ****
 (79 SAMPLES TYPED)

A2 100.0%
 (100.0%)

 A28 41.8%
 A68 50.6%
 A69 3.8%
 (96.2%)

 B14 48.1%
 B64 43.0%
 B65 6.3%
 (97.5%)

 B40X 0.0%
 B60 2.5%
 B61 20.3%
 B48 6.3%
 4008 11.4%
 B40 26.6%
 (67.1%)

 CW3 55.7%
 CW9 1.3%
 CW10 8.9%
 (65.8%)

 CW8 53.2%

 BW6 92.4%

(OTHERS FOUND)

B40V 7.6%
 A33 3.8%
 B35 2.5%
 CW7 2.5%
 BW4 2.5%
 A68 1.3%
 B50 1.3%
 B7 1.3%
 B61S 1.3%
 CW4 1.3%
 B57 1.3%
 B59 1.3%
 B70 1.3%
 B47 1.3%
 A28V 1.3%
 B48S 1.3%
 B18 1.3%
 B61V 1.3%
 B48V 1.3%

(HISP)
 **** CELL 1322 ****
 (79 SAMPLES TYPED)

A2 100.0%
 (100.0%)

 A68 59.5%
 A28 32.9%
 (92.4%)

 B35 97.5%

 B48 97.5%

 CW4 65.8%

 CW8 41.8%

 BW6 93.7%

(OTHERS FOUND)

A69 2.5%
 A33 1.3%
 A68 1.3%
 B21 1.3%
 CW7 1.3%
 B60 1.3%

(MIXD)
 **** CELL 1323 ****
 (78 SAMPLES TYPED)

A2 100.0%
 (100.0%)

 A26 96.2%
 A10 2.6%
 (98.7%)

 B55 94.9%
 B22 2.6%
 (97.4%)

 B62 97.4%
 B15 2.6%
 (100.0%)

 CW1 62.8%

 CW3 56.4%
 CW9 14.1%
 (70.5%)

 BW6 93.6%

(OTHERS FOUND)

CW7 3.8%
 B18 1.3%
 B42 1.3%
 6601 1.3%
 A66 1.3%
 2601 1.3%
 55.1 1.3%
 BW4 1.3%
 CX17 1.3%
 B55V 1.3%

(ASIA)
 **** CELL 1324 ****
 (78 SAMPLES TYPED)

A2 100.0%
 (100.0%)

 A26 96.2%
 A10 2.6%
 (98.7%)

 B40 21.8%
 B60 25.6%
 B61 52.6%
 (100.0%)

 B48 84.6%

 CW3 56.4%
 CW9 14.1%
 (70.5%)

 CW8 11.5%

 BW6 89.7%

(OTHERS FOUND)

CW7 11.5%
 A66 2.6%
 B60 2.6%
 CW2 2.6%
 B40V 2.6%
 B39 2.6%
 2601 1.3%
 B41 1.3%
 B48V 1.3%
 BW4 1.3%

*** 81 LABORATORIES REPLIED ***

***** NEXT SHIPMENT: 04/09/2008 *****