

DERMATOPATHOLOGY GROSSING GUIDELINES

QI Project Potocol:

- Process margins separately as **RUSH**
 - For larger excisions which require consulting with attending still **RUSH** en face sampled margins or any margin sampled
- Use a case flag for cases that a HN surgeon performs the skin excision

RUSH CASES:

For all RUSH cases, the dermpath fellows AND the skin service resident should be notified via email about the case.

Specimen Type: LARGE or WIDE SKIN EXCISION

Procedure:

1. Photograph specimen
2. Measure and orient, if applicable
 - a. You may re-designate a suture to a clockface orientation. However, if a suture is designated in a clockface pattern, you must keep provided orientation.
 - i. Suture on tip indicates superior. May be redesignated as 12:00.
 - ii. Suture on long edge indicates 12:00. This may NOT be redesignated as 3:00.
3. Describe epidermis and note presence of lesion and/or scar- describe size, shape, borders, and distance to margins.
 - a. If lesion is far from peripheral margins- take a thin shave of the peripheral margin and submit, en face. Designate clockface orientation in cassette summary.
 - b. If lesion is close to peripheral margin submit perpendicular sections to closest margin. Submit the remainder of the peripheral margin, en face.
4. Serially section and describe cut surface of lesion, measuring the maximum thickness of the lesion and the distance from the deep margin.

Gross Template:

MMODAL COMMAND: INSERT SKIN EXCISION

It consists of an oriented skin excision measuring [***] cm (12:00-6:00) x [***] cm (3:00-9:00), and excised to a depth of [***] cm. There is a short suture designating [***] and a long suture designating [***]. The epidermis is remarkable for a [*describe lesion/scar****]. The lesion is located [***] from 12:00, [***] from 3:00, [***] from 6:00, and [***] from 9:00.

The specimen is serially sectioned to reveal a [*describe cut surfaces****] cut surface. The lesion has a depth of [***] cm, and is located [***] cm from the deep margin. [*The specimen is entirely submitted/Representative sections are submitted****].

INK KEY:

Blue 12-3:00
Red 3-6:00
Green 6-9:00

DERMATOPATHOLOGY GROSSING GUIDELINES

Orange 9-12:00

Purple Deep

[insert cassette summary***]

MMODAL COMMAND: INSERT UNORIENTED SKIN

It consists of an unoriented skin excision measuring [*measure in length x diameter****] cm to a depth of [*****] cm. The epidermis is remarkable for a [*describe lesion/scar, give measurement in two dimensions, unremarkable****].

The specimen serially sectioned to reveal a [*describe cut surfaces****] cut surface. The lesion has a depth of [*****] cm, and is located [*****] cm from the deep margin. [*The specimen is entirely submitted/Representative sections are submitted****].

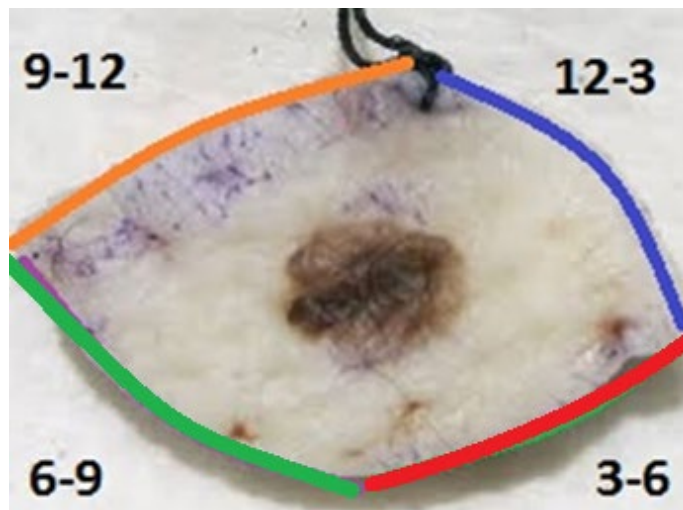
INK KEY:

Green resection margin

[Insert cassette summary***]

Cassette Submission: up to 20 cassettes - Please contact the attending **prior** to grossing in the specimen if you think that >20 cassettes will be necessary

- Tips
- Melanoma- block out and submit entire scar/lesion and satellite nodules
- BCC/SCC- submit entirely, unless very large. You may consult with attending



DERMATOPATHOLOGY GROSSING GUIDELINES

