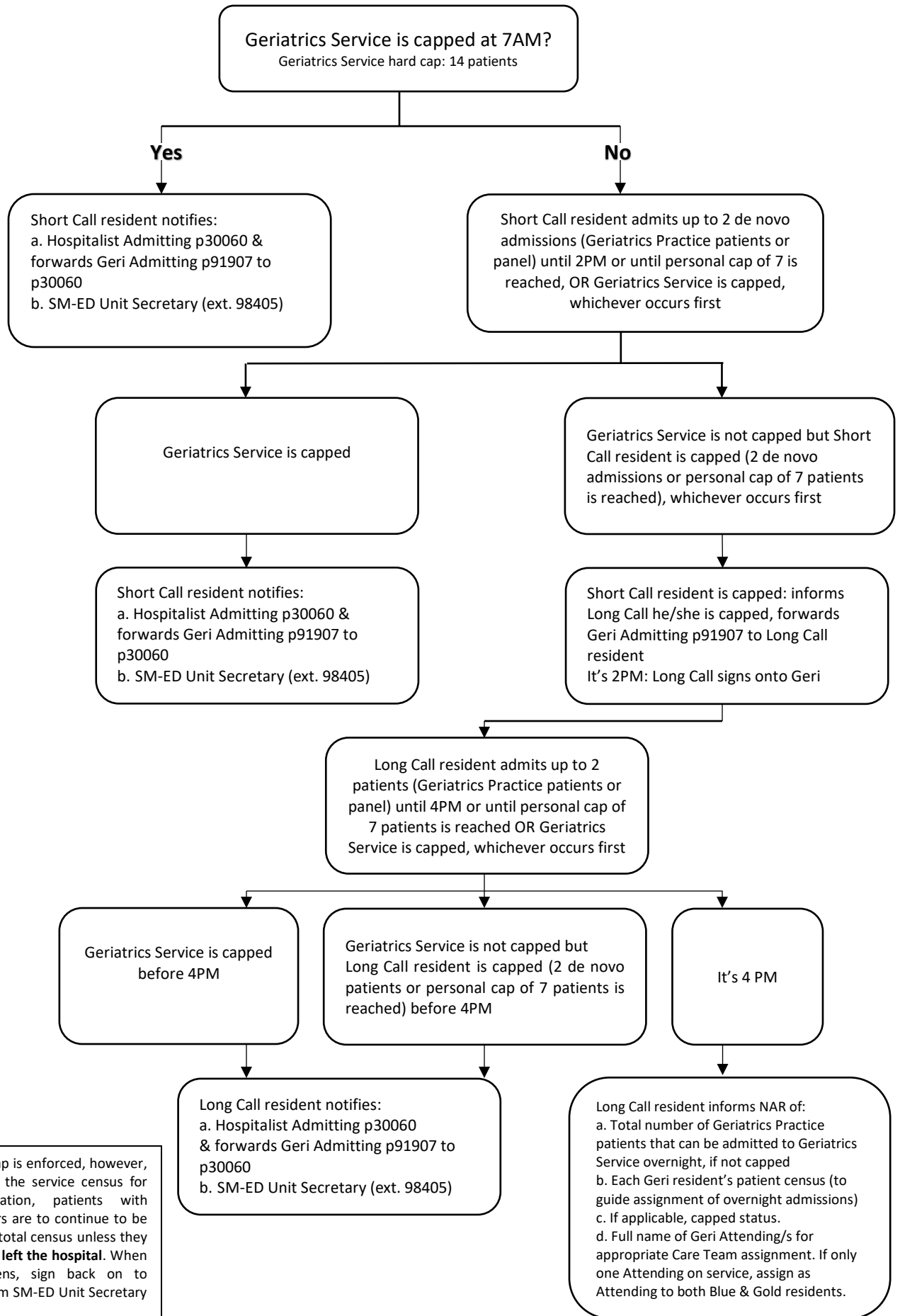
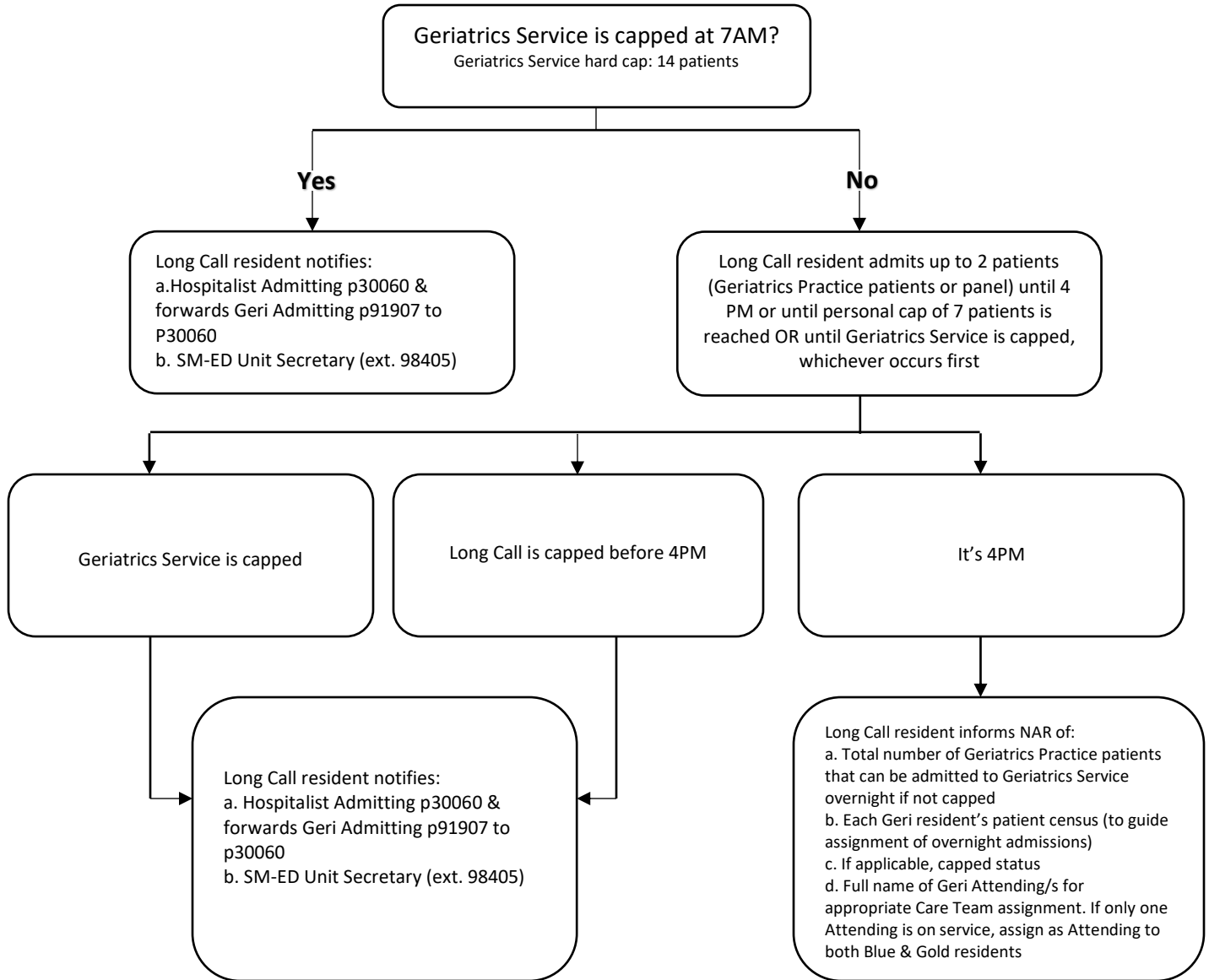


GERIATRICS WEEKDAY DAYTIME (7AM-4PM) ADMISSIONS ALGORITHM



Note: Rolling cap is enforced, however, when counting the service census for cap determination, patients with discharge orders are to continue to be counted in the total census unless they have **physically left the hospital**. When capacity reopens, sign back on to p91907 & inform SM-ED Unit Secretary (ext. 98405)

GERIATRICS DAYTIME WEEKEND (7AM-4PM) ADMISSIONS ALGORITHM



Note: Rolling cap is enforced, however, when counting the service census for cap determination, patients with discharge orders are to continue to be counted in the total census unless they have **physically left the hospital**. When capacity reopens, sign back on to p91907 & inform SM-ED Unit Secretary (ext. 98405)

GERIATRICS OVERNIGHT ADMISSIONS ALGORITHM

Geriatrics Service is capped at 4PM?
Geriatrics Service hard cap: 14 patients

Yes

No

Long Call Geri resident notifies:
 a. NAR
 b. Hospitalist Admitting p30060 & forwards Geri Admitting p91907 to p30060
 c. SM-ED Unit Secretary (ext. 98405)
 d. Full name of Geri Attending/s for appropriate Care Team assignment. If only one Attending on service, assign as Attending to both Blue & Gold residents

NAR admits up to 2 Geriatrics Practice patients or until Geriatrics Service cap is reached, whichever occurs first

Geriatrics Service is capped

Geriatrics Service is not capped but NAR is capped

NAR notifies:
 a. Hospitalist Admitting p30060 & forwards Geri Admitting p91907 to p30060
 b. SM-ED Unit Secretary (ext. 98405)

NAR notifies
 NF p90016 & forwards Geri Admitting p91907 to p90016

NF admits up to 2 Geriatrics Practice patient OR until Geriatrics Service cap is reached, whichever occurs first

Geriatrics Service is capped

NF is capped

NF notifies:
 a. Hospitalist Admitting p30060 & forwards Geri Admitting p91907 to p30060
 b. SM-ED Unit Secretary (ext. 98405)

Note: Rolling cap is enforced, however, when counting the service census for cap determination, patients with discharge orders are to continue to be counted in the total census unless they have **physically left the hospital**. When capacity reopens, sign back on to p91907 & inform SM-ED Unit Secretary (ext. 98405)