



# The UCLA Brain Tumor Center

## Patient and Family Information Packet

[www.uclahealth.org/braintumor](http://www.uclahealth.org/braintumor)

# Table of Contents

---

Overview..... 1

UCLA Brain Tumor Center Team..... 2

Patient Navigation and Care Coordination..... 2

Patient Care Roadmap..... 3

Brain Tumor Research and Clinical Trials..... 4

Locations..... 4

Conditions We Treat..... 5

Brain Tumor Treatment..... 6

Parking and Directions..... 7

First Clinic Visit Checklist..... 8

---

## Overview

The UCLA Brain Tumor Center is a leader for research, diagnosis and treatment of brain tumors. Our clinicians and scientists are world-renowned experts in their fields. Since 1991, we have cared for nearly 5,000 patients with brain tumors from all over the world. UCLA Health has earned continuously high ranking in US News and World Report's top programs in cancer, neurosurgery and neurology. Our emphasis on individualized care helps us provide the best possible care and treatment to more than 800 patients a year.

We are committed to delivering exceptional care and providing the support needed for patients and family members during this difficult time. An integral part of the care provided at the UCLA Brain Tumor Center is its patient-focused care coordination team, which consists of clinical nurse navigators, administrative patient navigators, nurse practitioners and department care coordinators who are exclusively committed to ensuring a smooth experience for patients and families. Our team will anticipate patient needs and help guide patients at each stage of their care journeys, ensuring that care is coordinated and communicated in a manner that makes patients feel secure and confident about their next steps.

We are humbled by the trust patients place in our team for their medical care, and hope that we have the opportunity to deliver the same high-quality care to you or a loved one.



---

## UCLA Brain Tumor Center Teamwork

The care of brain tumors can be complex, requiring collaboration from a wide range of different specialists. At the UCLA Brain Tumor Center, coordinated teamwork is integral to our success for seamlessly delivering innovative and personalized care. From diagnosis and imaging to chemotherapy and neurosurgery, each member of our team is solely focused on caring for patients with brain tumors.

A key component of the success of our Center is the close collaboration among the team of experts needed for best patient care. We have broken down barriers common in academic centers, creating one of the few fully integrated brain tumor programs in the country. Working together as a group, with each team member providing the unique perspective from their field of expertise, allows us to deliver tailored care best suited for each patient.

Our team includes brain tumor experts from:

- Neuro-Oncology
- Neurosurgery
- Neuro-Radiation Oncology
- Neuroradiology
- Pediatric Neuro-Oncology
- Pediatric Neurosurgery
- Neuro-Anesthesiology
- Neuropathology
- Neuropsychology
- Neuroendocrinology
- Head and Neck Skullbase Surgery
- Brain Mapping

## Patient Navigation and Care Coordination

The UCLA Brain Tumor Center's experienced nurse and patient navigators are exclusively focused on providing patients with the best possible care coordination, ensuring seamless continuity of care throughout all settings at UCLA Health. Traditional brain tumor care can be quite complex, with treatment and visits potentially taking place in inpatient and outpatient settings. The UCLA Brain Tumor Center's navigators coordinate care between all departments, supporting patients and families during their care journeys as a key liaison for inter-departmental collaboration and communication.

Our clinical nurse navigator will focus on the clinical and educational aspects of your care, while our administrative patient navigator is a key point of contact for any administrative and coordination needs, including scheduling. They work together to ensure your care is coordinated from end-to-end, and will connect patients with helpful resources within UCLA Health and the community.

### **Clinical Nurse Navigator**

[Darlene Dezelan, RN, MSN](#)

E-mail: [ddezelan@mednet.ucla.edu](mailto:ddezelan@mednet.ucla.edu)

Office phone: (310) 825-9909

### **Administrative Patient Navigator**

Office phone: (310) 825-5111

### **Neurosurgery Nurse Practitioners**

[Emma Billingslea-Yoon, NP](#)

[Rachel Byers, NP](#)

### **Neuro-Oncology Nurse Practitioners**

[Nanette Fong, NP](#)

[Lauren Michelson, NP](#)

[Stacey Green, NP](#)

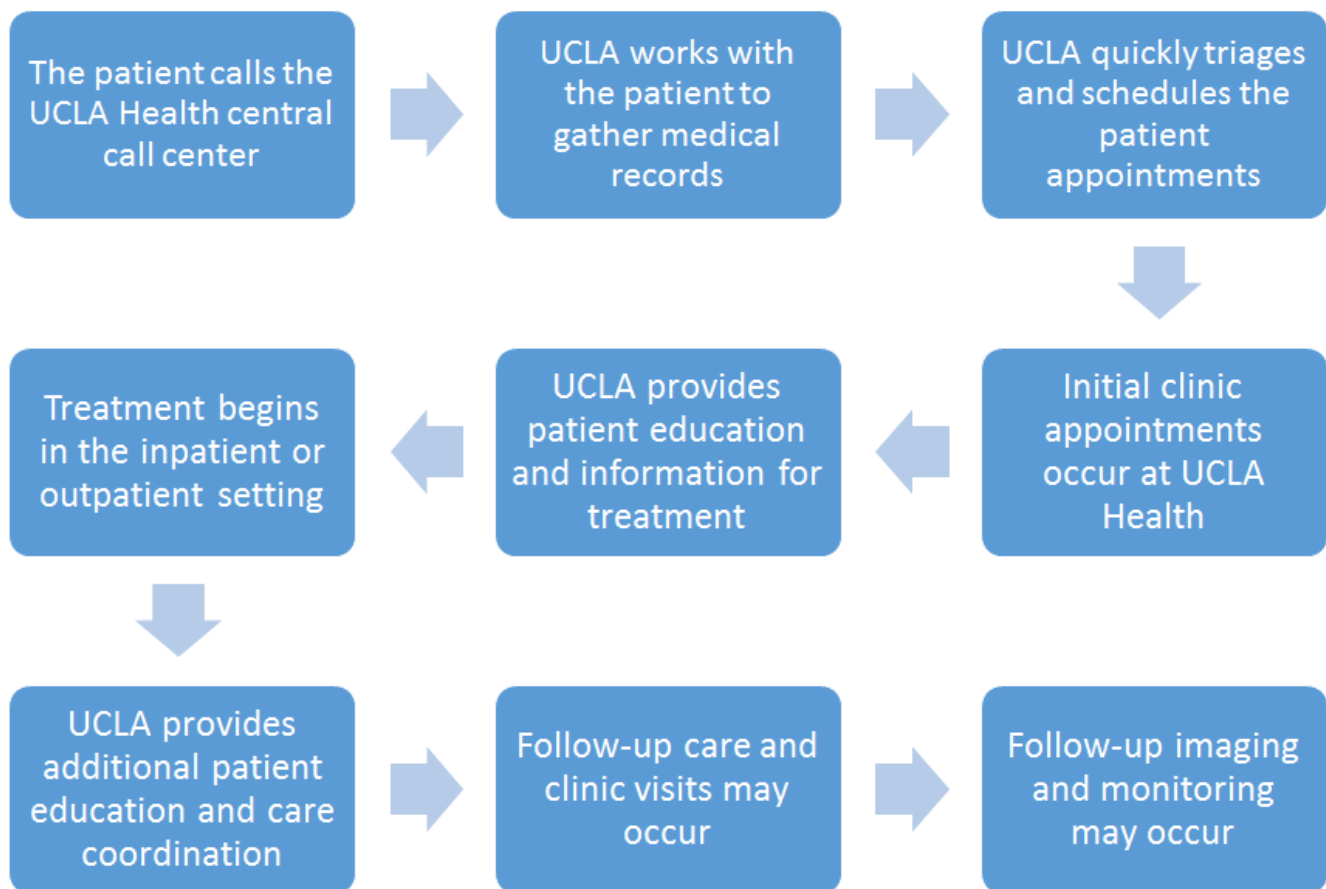
---

## Patient Care Roadmap



While no two patients' care paths will be exactly alike, we have created a Patient Care Roadmap that provides a general overview of what patients may expect as they move through their care journey at UCLA Health, from the introductory process of joining our health system to the step-by-step actions involved in treatment and follow-up care. Below is a very high-level summary of some of the key touchpoints that many patients will go through.

A particular focus of our Brain Tumor Center is ensuring that patients and caregivers are informed and prepared for each step of their care at UCLA Health. It is our goal that our clinicians, navigators and coordinators help facilitate your progression throughout each step.



For the full roadmap, including our team's role during each step, how the navigators work with you, and your role as the patient, please visit: [uclahealth.org/brainumor/patient-care-roadmap](https://uclahealth.org/brainumor/patient-care-roadmap).



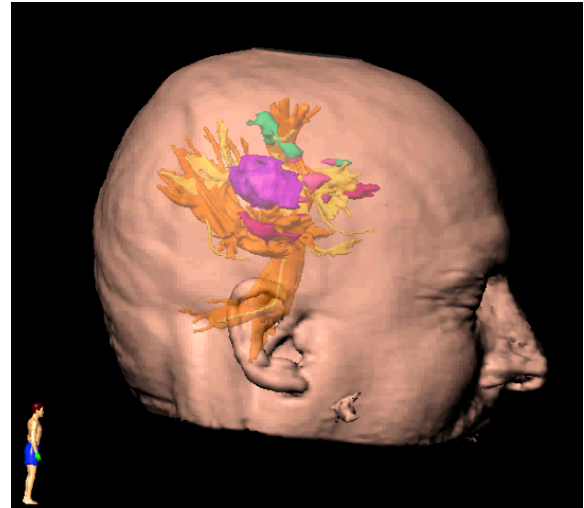
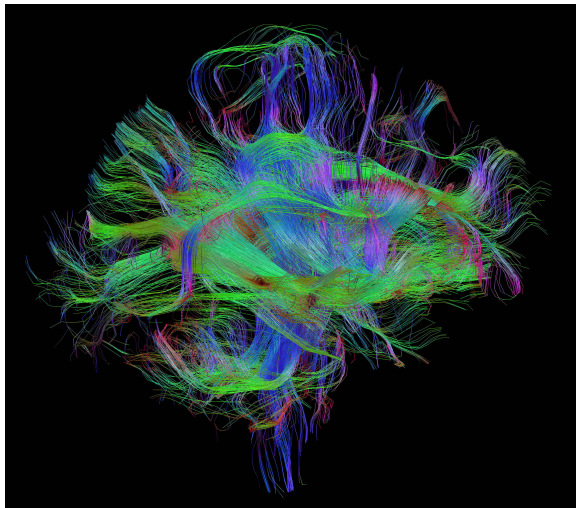
---

## Brain Tumor Research and Clinical Trials

Experts at the UCLA Brain Tumor Center are using science and technology to improve outcomes and quality of life for brain tumor patients. We have earned an international reputation for our groundbreaking work, which includes developing new therapies and treatment technologies.

UCLA is one of the top-five brain tumor research programs in the country. We are part of an elite group of researchers that includes other divisions within the David Geffen School of Medicine at UCLA, our UCLA Brain Research Institute and preeminent research agencies such as the National Institutes of Health. We have the best and brightest researchers exploring every aspect of brain tumor care. Primary areas of research focus include targeted therapies, imaging, treatment technologies, quality of care, quality of life, and brain tumor pathology.

We evaluate all of our brain tumor patients to determine if they could benefit from a clinical trial. If you are eligible, we take the time to explain the risks and benefits of participating. To learn more, visit: [uclahealth.org/braintumor/Pages/research.aspx](http://uclahealth.org/braintumor/Pages/research.aspx) and [clinicaltrials.ucla.edu](http://clinicaltrials.ucla.edu).



## Locations

### Neurosurgery (Westwood)

Edie & Lew Wasserman Building  
300 Stein Plaza, Suite 420  
Los Angeles, CA 90095  
Phone: (310) 825-5111

### Neuro-Oncology

Westwood Bowyer Clinic  
200 UCLA Medical Plaza, Suite 120  
Los Angeles, CA 90095  
Phone: (310) 206-6909

### Radiation Oncology (Westwood)

Department of Radiation Oncology  
200 UCLA Medical Plaza, Suite B265  
Los Angeles, CA 90095-6951  
Phone: (310) 825-9775

---

## Conditions We Treat

We deliver comprehensive care for more than 30 different types of brain tumors. With a team of specialists that includes expertise in every aspect of brain tumor care, we deliver comprehensive diagnostic and treatment services for all types and grades of brain tumors.

Brain tumors we treat include:

- **Gliomas**

Gliomas arise from the supportive cells of the brain and spinal cord. UCLA is among the top glioma programs in the country.

- **Meningiomas**

A meningioma is a tumor that forms in the layer of tissue covering your brain and spine (the meninges). Best clinical management requires a truly integrated team approach, often with multiple specialists.

- **Brain Metastases**

A metastatic brain tumor begins as a cancer elsewhere in your body and spreads to the brain. UCLA offers treatments for brain metastases that are not widely available, including laser ablation therapy.

- **Pituitary Tumors**

UCLA is home to one of the largest pituitary programs on the West Coast. Our team includes leading neurosurgeons, head and neck skullbase surgeons, and neuroendocrinologists. We specialize in treating all tumors involving this area of the skullbase, including pituitary tumors, craniopharyngiomas, esthesioneuroblastomas, and chordomas.

- **Skull Base Tumors**

These tumors arise from within or on the surface of the base of the skull, compressing the brain. Using the combination of minimally invasive surgical techniques and advanced technology such as stereotactic radiosurgery, these tumors can be effectively and safely treated.

- **Spinal Cord Tumors**

We deliver expert care for the full range of spinal cord tumors.

- **Other brain tumors**

- Brain cysts
- Choroid plexus papillomas
- Primary central nervous system (CNS) lymphoma
- Cystic tumors
- Neurofibromatosis type II
- Dermoid tumors
- Germinomas
- Pineal tumors
- Vascular tumors

---

## Brain Tumor Treatment

At UCLA Health, we recognize that just as each patient is different, so is each tumor. Our team of experts considers the unique genetic makeup of each brain tumor when developing personalized treatment plans. We are one of the few programs in the country that employs such a meticulous approach.

We deliver comprehensive care for any brain tumor. Part of what makes us unique is the expertise we've gained through research and clinical trials. Our experience researching all aspects of brain tumor care helps us determine the best treatment for each specific tumor type.

Treatments we offer for brain tumors include:

- **Advanced Neurosurgical Techniques:**

**Language function brain mapping:** UCLA has pioneered brain mapping techniques that allow removal of tumors, sometimes with the patient awake, near critical language areas of the brain- areas often considered inoperable elsewhere.

**Minimally invasive surgery:** Our surgeons are experts in “keyhole” surgery, endoscopic surgery, and laser interstitial therapy. These techniques often allow smaller, more discreet scars, and faster recovery.

- **Chemotherapy:** We offer the complete range of chemotherapy agents for brain tumors, with innovative delivery methods and individualized molecular testing.
- **Radiation Therapy:** We offer a range of innovative radiation oncology therapies, including stereotactic radiosurgery. We deliver this treatment using the Novalis Tx® Stereotactic Radiosurgery System, which our team helped develop.
- **Biologics and Immunotherapy:** Our therapies include vaccines that boost your body's natural ability to fight tumor cells, as well as other types of immunotherapy. We also offer targeted therapy aimed at parts of cancer cells or their functions.
- **Interventional Neuroradiology:** In certain cases, pre-operative treatment of tumors may be beneficial, such as tumor embolization before surgery.





## Parking and Directions

### Ronald Reagan UCLA Medical Center campus map and main phone numbers:

Main Operator – Hospital Information.....	(310) 825-9111
Operator – Patient Information.....	(310) 825-8611
Emergency Department.....	(310) 825-2111
Physician Referral.....	(800) 825-2631
Patient Billing.....	(310) 825-8021
Maddie's Room (Surgical Waiting) .....	(310) 267-9325



### Parking:

For inpatient visits, valet parking is available at both the main entrance (east side) and the Mattel Children's Hospital UCLA entrance (west side) of the hospital.

For outpatient visits, the best location to park is Parking Structure #1, on the southwest side of the medical center campus, adjacent to the 200 UCLA Medical Plaza building. This can be accessed from Medical Plaza Circle Drive off of Westwood Plaza, or from Gayley Avenue.

---

## First Clinic Visit Checklist

In order for patients to have a productive first clinic visit with our clinician team, below is a convenient checklist of how to prepare and what to bring to the appointment.

- **Send your MRI images and medical records to UCLA Health, if you have records from outside organizations. Diagnostic images, operative reports, and pathology reports will help us make your first visit more productive.**
- **Fill out the online patient health history questionnaire sent to you via e-mail, and be prepared to fill out a few forms when you arrive at the clinic, such as a referring physician form and medication summary list.**
- **Bring your health insurance identification card to your first appointment. If you belong to an HMO, please bring the authorization form or confirmation number, as well.**
- **If you speak a foreign language and would like an interpreter, please let us know at least 24 hours in advance so we can request one for you.**
- **Prepare a list of questions that you would like to ask the physician during your appointment.**
- **Please arrive at the clinic 30 minutes before your scheduled appointment time.**

## Your First Appointment

Feel free to use the spaces below to note information about your first appointment with us.

**Appointment Date:**\_\_\_\_\_

**Appointment Time:**\_\_\_\_\_

**Physician Name:**\_\_\_\_\_

For more information about the UCLA Brain Tumor Center, please visit [uclahealth.org/braintumor](http://uclahealth.org/braintumor) and download the UCLA Neurosurgery iPhone app on the App Store.