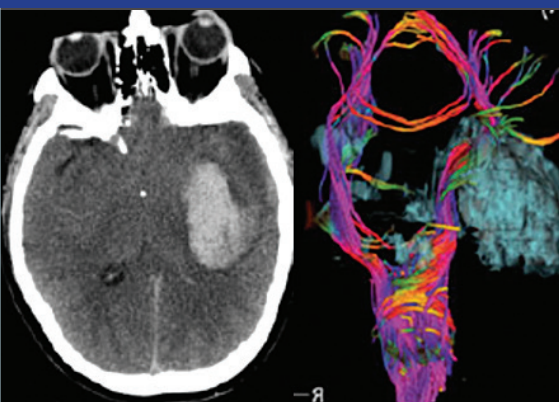




David Geffen
School of Medicine

CRITICAL CARE OF THE FUTURE: CONTROVERSIES *and* RESEARCH *in* CRITICAL CARE



FEBRUARY 1-2, 2018

UCLA Campus
Neuroscience Research Building
Auditorium (NRB)
Los Angeles, California



Course Director

Paul M. Vespa, MD, FCCM, FAAN, FNCS



CRITICAL CARE OF THE FUTURE: CONTROVERSIES *and* RESEARCH *in* CRITICAL CARE

This is our 12th annual neurocritical care symposium featuring a two-day conference designed to discuss innovative strategies to treat neurotrauma, cardiac arrest and other neurologic emergencies.

COURSE DIRECTOR

Paul M. Vespa, MD, FCCM, FAAN, FNCS

Assistant Dean of Critical Care Medicine
Gary L. Brinderson Family Chair in Neurocritical Care
Professor of Neurosurgery & Neurology*
Department of Neurology

GUEST FACULTY

Michael J. Bell, MD

Chief, Division of Critical Care Medicine
DC Lawyers Care for Children Professor of
Critical Care Medicine
Children's National Medical Center
Washington, DC

Thomas P. Bleck, MD, MCCM, FNCS

Professor of Neurological Sciences,
Neurosurgery, Medicine & Anesthesiology
Assistant Dean, Rush Medical College
Associate Chief Medical Officer (Critical Care)
Rush University Medical Center
Chicago, Illinois

J. Perren Cobb, MD, FACS, FCCM

Professor of Clinical Surgery & Anesthesiology
Director, Surgical Critical Care
Keck Hospital of USC
Los Angeles, California

Carla M. Sevin, MD

Assistant Professor of Medicine
Director, Pulmonary Patient Care Center
Director, The ICU Recovery Center at Vanderbilt
Vanderbilt University
Nashville, Tennessee

UCLA FACULTY

Paul R. Allyn III, MD

Assistant Clinical Professor*
Department of Medicine, Infectious Diseases

Manuel Buitrago Blanco, MD, PhD

Assistant Professor*
Neurosurgery, Neurology & Neurocritical Care

Steven Y. Chang, MD, PhD

Associate Clinical Professor of Medicine*
Co-Director, Medical Intensive Care Unit
Pulmonary & Critical Care Medicine

Myke Federman, MD

Associate Professor of Pediatrics*
Division of Pediatric Critical Care
Medical Director, Pediatric Cardiothoracic
Intensive Care Unit
Program Director, Pediatric Critical Care
Fellowship

Meena Garg, MD

HS Clinical Professor*
Department of Pediatrics/Neonatology

Biren B. Kamdar, MD, MBA, MHS

Assistant Clinical Professor*
Division of Pulmonary Diseases & Critical Care
Department of Medicine

Georgia Korbakis, MD

Clinical Assistant Professor*
Department of Neurosurgery
Neurointensivist Central Coast Critical Care
Associates
Santa Barbara Cottage Hospital

Marc R. Nuwer, MD, PhD

Professor & Vice Chair*
Department of Neurology
Department Head, Clinical Neurophysiology

Anil Sapru, MD

Associate Professor of Pediatrics*
Division Chief, Pediatric Critical Care
Department of Pediatrics

Latisha Katie Sharma, MD, FAHA

Associate Professor of Neurology*
Director, Stroke Center Medical Quality
Director, TeleStroke Program
Associate Director, Vascular Neurology
Residency Program

Areti Tillou, MD, MSEd

Professor & Vice Chair for Education*
Department of Surgery
Director, UCLA-CASIT Accredited Education
Institute

Tisha Wang, MD

Associate Professor of Clinical Medicine*
Fellowship Program Director
Clinical Division Chief, UCLA Division of
Pulmonary & Critical Care Medicine
Director of Pulmonary & Critical Care Services
Medical Director, Liver Transplant Intensive
Care Unit, UCLA Division of Liver & Pancreas
Transplantation

Neil Wenger, MD

Professor*
Department of Medicine
Director, UCLA Health Ethics Center

*David Geffen School of Medicine at UCLA

DAY 1 – THURSDAY, FEBRUARY 1, 2018

- 7:00 AM **Registration and Continental Breakfast**
- 8:00 **Welcome and Introduction to Controversies**
Paul M. Vespa, MD, FCCM, FAAN, FNCS
- 8:30 **Trauma Care Fundamentals**
Areti Tillou, MD, MEd
- 9:00 **Prehospital Emergency Preparedness**
J. Perren Cobb, MD, FACS, FCCM
- 9:30 **Pediatric Trauma – What is Unique?**
Myke Federman, MD
- 10:00 **Break**
- 10:30 **Depth of Hypothermia in Neonatal Hypoxic Ischemia**
Meena Garg, MD
- 11:00 **Are Sepsis Biomarkers Ready for Prime Time?**
Anil Sapru, MD
- 11:30 **Trends and Trials in Pediatric TBI**
Michael J. Bell, MD
- 12:00 PM **Lunch**
- 1:30 **Advances in Sepsis**
Paul R. Allyn III, MD
- 2:00 **Advances in Transplant Critical Care**
Tisha Wang, MD
- 2:30 **ARDS and PETAL Trials**
Steven Y. Chang, MD, PhD
- 3:00 **Break**
- 3:30 **Liberation from ICU**
Carla M. Sevin, MD
- 4:00 **Brain Death and Organ Donation**
Georgia Korbakis, MD
- 4:30 **Ethics in Critical Care**
Neil Wenger, MD
- 5:00 **End of Day 1**

DAY 2 – FEBRUARY 2, 2018

- 7:00 AM Registration and Continental Breakfast
- 8:00 PANGEA in Pediatric Critical Care
Michael J. Bell, MD
- 8:30 Septic Encephalopathy
Thomas P. Bleck, MD, MCCM, FNCS
- 9:30 Delirium and Sleep Disorders
Biren B. Kamdar, MD, MBA, MHS
- 10:00 Break
- 10:30 Genomics and Personalized Medicine in Critical Care
Paul M. Vespa, MD, FCCM, FAAN, FNCS
- 11:00 Post ICU Syndrome
Carla M. Sevin, MD
- 11:30 Neuromonitoring in Critical Care
Marc R. Nuwer, MD, PhD
- 12:00 PM Lunch
Discussion group with Carla M. Sevin, MD and nursing leadership
- 1:30 Trends and Trials in ICH
Manuel Buitrago Blanco, MD, PhD
- 2:00 Trends and Trials in Status Epilepticus
Thomas P. Bleck, MD, MCCM, FNCS
- 2:30 Trends and Trials in Stroke
Latisha Katie Sharma, MD, FAHA
- 3:00 Break
- 3:30 Clinical Case Simulations and Discussion
Guest faculty discussants
- 5:00 End of Day 2 / Conference

CRITICAL CARE OF THE FUTURE:
CONTROVERSIES *and* RESEARCH
in **CRITICAL CARE**

CRITICAL CARE OF THE FUTURE:
CONTROVERSIES *and* RESEARCH
in **CRITICAL CARE**

COURSE M178-24	TUITION
Physicians	\$300.00
Nurses/ Nurse Practitioners	\$200.00
Fellows/Residents	\$150.00
TOTAL	

Please print clearly

Specialty

Name (First, Middle, Last)

Degree

Preferred Mailing Address

City, State, Zip

(Area Code) Business Phone

(Area Code) Fax Number

E-mail Address

Last 4 digits of your Social Security Number _____

Course Enrollment Options

CHECK enclosed, payable to: **Regents of the University of California**

CHARGE ☐ Visa ☐ MasterCard ☐ Discover ☐ American Express

Card Number

Exp. Date

Authorizing Signature _____

Mail to: Office of Continuing Medical Education
David Geffen School of Medicine at UCLA
UCLA Critical Care of the Future
10920 Wilshire Blvd., Suite 1060
Los Angeles, CA 90024-6512

Fax: (310) 794-2624 (must include charge card information and authorizing signature)

Call: (310) 794-2620

Register on-line: www.cme.ucla.edu/courses (click on *UCLA Critical Care of the Future*)

REFUNDS: Cancellations must be received in writing by January 11, 2018 and will be subject to a \$75 processing fee. No refunds will be given after that date. If for any reason the course must be canceled, discontinued, or rescheduled a full refund will be provided.

SPECIAL FOCUS FOR 2018

We will focus on controversies and recent advances in these areas:

TRAUMA:

Prehospital preparedness, resuscitation, and pediatric trauma.

ICU CONTROVERSIES:

Discussion of sepsis goal of care, delirium, post-ICU syndrome, and ethics.

PEDIATRICS:

Neonatal hypothermia, ARDS, and TBI.

NEUROCRITICAL CARE:

Surgery for hemorrhage, stroke thrombectomy, and refractory status epilepticus.

ASK THE EXPERTS:

Discuss interactive cases with the expert faculty.

AUDIENCE RESPONSE:

This is a highly interactive, participatory conference. There will be live audience response for each lecture, as well as the simulation sessions.

ACCREDITATION

The Office of Continuing Medical Education, David Geffen School of Medicine at UCLA is accredited by the Accreditation Council for Continuing Medical Education to provide continuing medical education for physicians.

The Office of Continuing Medical Education, David Geffen School of Medicine at UCLA designates this live activity for a maximum of *14.5 AMA PRA Category 1 Credits™*. Physicians should claim only credit commensurate with the extent of their participation in the activity.

DISCLOSURE STATEMENT

The FDA has issued a concept paper which classifies commercial support of scientific and educational programs as promotional unless it can be affirmed that the program is "truly independent" and free of commercial influence. In addition to independence, the FDA requires that nonpromotional, commercially supported education be objective, balanced, and scientifically rigorous. The policy further states that all potential conflicts of interest of the CME staff and faculty be fully disclosed to the program's participants. In addition, Accreditation Council for Continuing Medical Education policy mandates that the provider adequately manages all identified potential conflicts of interest prior to the program. We at UCLA fully endorse the letter and spirit of these concepts.

ACCOMMODATION SUGGESTIONS

A list of hotels conveniently located near UCLA is available at:

https://www.uclahealth.org/Workfiles/patient_affairs/westwood-hotel-list.pdf

COURSE OVERVIEW

This is a two-day conference designed to discuss innovative strategies and controversies for the treatment of critically ill patients with trauma, sepsis, acute respiratory distress syndrome (ARDS), and brain injuries in the ICU of the future. We will provide updates on the fundamentals, but explore state-of-the-art controversies and late-breaking results from ongoing studies.

Top experts from all branches of critical care will be featured, including trauma, pediatrics, pulmonary, infectious disease, anesthesia, and neurocritical care. Interactive lectures supplemented with discussion groups, simulation training, and hands-on workshops will provide unique learning that transcends the usual CME course, and enable participatory learning for maximal impact on your practice.

TARGET AUDIENCE

Intensive Care Doctors, Nurses, Nurse Practitioners, Trauma Surgeons, Emergency Physicians, Neurologists, Residents and Fellows

EDUCATIONAL OBJECTIVES

At the conclusion of this program, participants should be able to:

- Implement a standardized process of care for the trauma patient
- Utilize pre-hospital and emergency management of critically ill patients
- Use current quality metrics and processes for ICU patients
- Apply time-sensitive treatments for sepsis, acute lung injury, shock, stroke, cardiac arrest, and traumatic brain injury
- Create hypothermia and targeted temperature management for neurologic injuries
- Implement best practices to decrease ICU delirium and post-ICU syndrome
- Enable informed ethical decision making among patients/families in the critical care setting
- Incorporate and use neurologic monitoring in critically ill patients

UCLA Office of Continuing Medical Education
David Geffen School of Medicine at UCLA
405 Hilgard Avenue MC 29
Los Angeles, California 90095-6938

CRITICAL CARE OF THE FUTURE:
CONTROVERSIES *and* RESEARCH
in CRITICAL CARE

FEBRUARY 1-2, 2018

UCLA Campus
Neuroscience Research Building
Auditorium (NRB)
Los Angeles, California

Non-Profit Org.
U.S. Postage
PAID
UCLA