



How Far Will My Money Go?

UCLA Anesthesiology Resident

America's Most Expensive Cities – USA Today

8. Bridgeport-Stamford-Norwalk, CT

9. Washington DC-Arlington-Alexandria

10. Los Angeles, CA

11. Vallejo-Fairfield, CA

12. Oxnard-Thousand Oaks-Ventura, CA



UCLA Housestaff Salaries

PGY Salary

AND

Housing Stipend (\$12,000,
paid as \$1,000/month)

Salary increase ~ 4% per
year

	Salary + Housing Stipend	Total Salary 2021-2022
PGY-1	\$64,379	\$76,379
	\$12,000	
PGY-2	\$66,513	\$78,513
	\$12,000	
PGY-3	\$69,126	\$81,126
	\$12,000	
PGY-4	\$71,855	\$83,855
	\$12,000	

GME Financial Support

○ Meals

- Meal allowance on your Bruincard ~\$3,000/yr for use at UCLA hospitals/subway
- \$250/mo UBER-eats at offsite locations (CHLA, VA, Long Beach)
- Not to exceed \$25/day
- Use it all because it does not carry over



GME Financial Support

○ Education Fund



Article 6: EDUCATIONAL FUND AND SCHOLARLY PURSUIT

Discretionary Endeavors

The University shall reimburse Residents for authorized expenses in recognition of educational objectives incurred for events or equipment that are not required but may further the Resident's professional development.

Eligibility for each academic year:

1. Interns are eligible for reimbursement up to \$500.
Funds that are not used by Interns can be rolled over for use in the following year.
2. Residents and Fellows are eligible for reimbursement for up to \$1,000/year.
Funds that are not used can be rolled over for use only in the following year.
3. Activities include but are not limited to:
 - Annual education conference(s) including registration, travel, lodging, food
 - Textbooks, journals
 - Exam review materials/courses
 - Board fees
 - Medical equipment
 - Professional association membership/fees
 - Computer equipment/software

GME Financial Support

○ Medical License

○ BLS, ACLS

○ USMLE Step III \$895

○ Medical license

○ Postgrad training license \$808

○ DEA license \$888



GME Financial Support

○ Relocation - \$2,750



Article 25: RELOCATION

Relocation Reimbursement

1. Newly appointed Residents shall receive up to \$2750 in reimbursement for expenses incurred for new Residents in academic year 2019 subject to the University's Travel and Relocation Policy.
2. For academic years 2020 and 2021, new Residents shall be eligible for reimbursement subject to the University's Travel and Relocation Policy and shall be paid within 60 days of the submission of proper documentation.

GME Financial Support

- Health Insurance (UC PPO plan), dental, and vision
- Life and disability insurance
- University-issued iphone capable of running applications needed for duties (Spoke, Haiku, Epic etc)
- Uniforms (2 white coats, 3 sets of scrubs, **3 Patagonia UCLA jackets**, slip resistant shoes every 6 months!)
- Resident holidays
 - Thanksgiving, Christmas, New Year's



Resident Budget

- Monthly gross salary: \$
\$6,158.58
- Actual take-home
amount: \$5,022.27



- Living Expenses:
 - Rent: \$1,750 (1 bd)
 - Utilities: \$250
- Food and Entertainment:
 - \$1,500
- Am I able to save money every month? YES!
 - ***Save ~\$1500 per month***

More on Housing...

- Factors affecting rent pricing:
 - **Location, location, location**
 - Living Alone vs. Roommates
 - On Campus Housing Options
 - Amenities, Luxury Apartments



Neighborhood Rent Averages

Pro Tip: Give Yourself Time!

○ West Hollywood

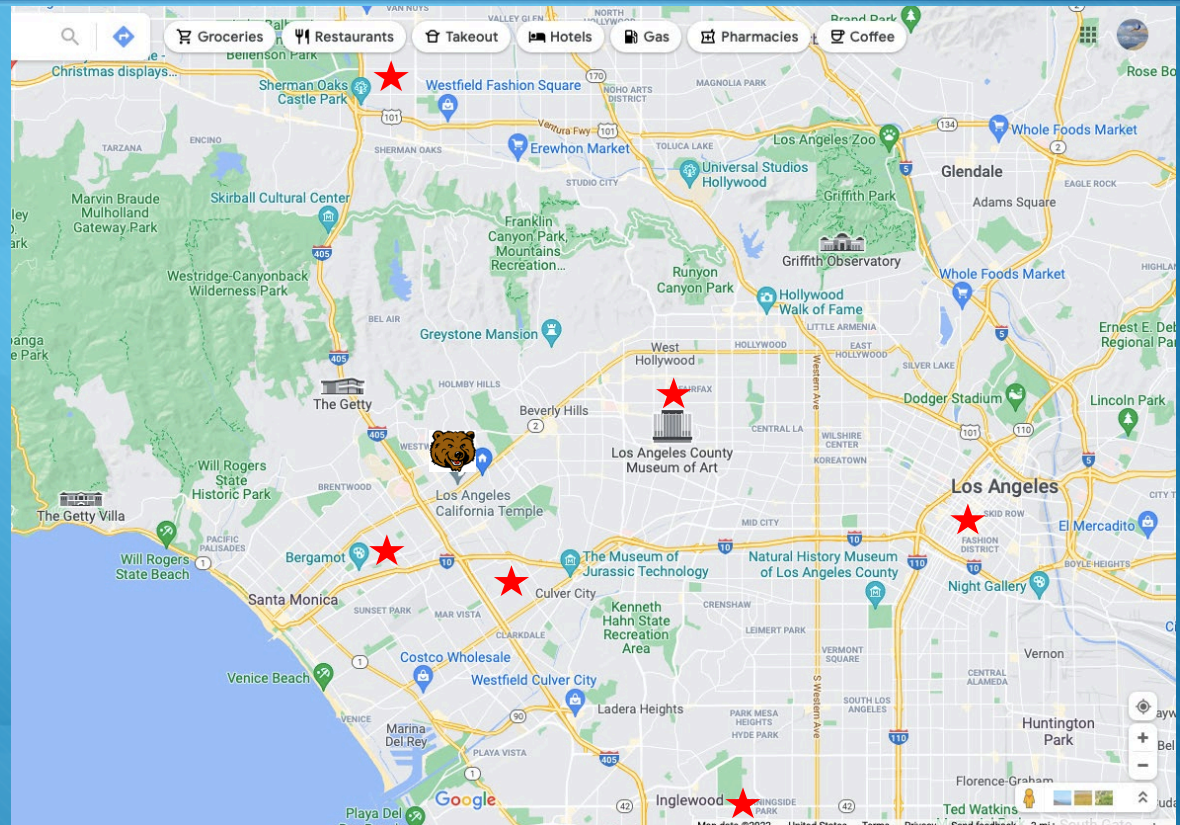
- Studios: \$2,004
- 1-bedrooms: \$2,473
- 2-bedrooms: \$3,364

○ Santa Monica

- Studios: \$2,448
- 1-bedrooms: \$2,900
- 2-bedrooms: \$4,000

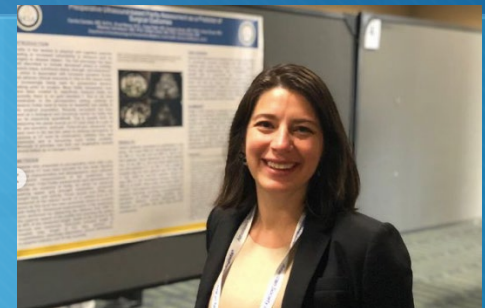
○ Culver City

- Studios: \$1,783
- 1-bedrooms: \$2,196
- 2-bedrooms: \$2,993



EDI Outreach

- ◊ UCLA Anesthesiology EDI committee
- ◊ UCLA GME EDI committee
- ◊ MHO Minority Housestaff Organization



Questions?



Fontem PGY1



Clark PGY1



Lowe PGY1



Cardona CA1



Gomez CA1



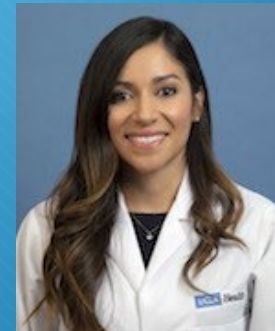
Burton CA2



Abraha CA3



Canales CA3



Martinez CA3