

CARDIOVASCULAR PATHOLOGY GROSSING GUIDELINES

NOTE: Please review all complex or “interesting” gross specimens with Drs. Michael Fishbein, Gregory Fishbein, or Ryan Lau.

Specimen Type: NATIVE HEART VALVES

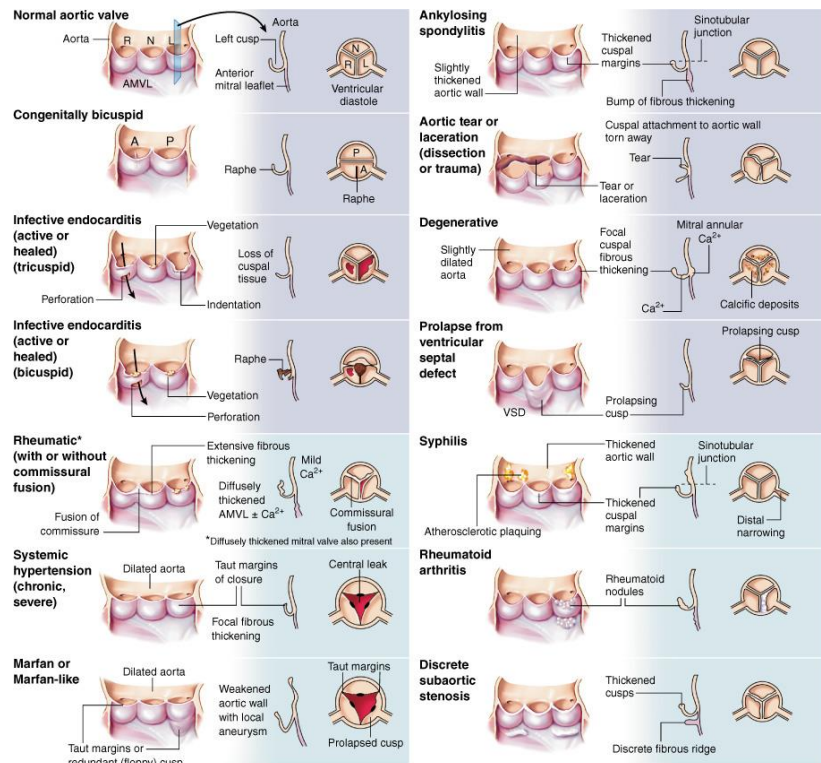
Procedure:

1. Take gross photographs
2. Measure, range and aggregate
3. Document presence of lesions, vegetations, calcifications
4. Comment on attached chordae tendinae, if present

Gross Template:

Labeled with the patient's name (***), medical record number (***), designated “***”, and received [fresh/in formalin] is a [mitral/aortic] valve measuring *** x *** x *** cm. The [cusps or leaflets] are [yellow, smooth, calcified, and intact]. Tears in the leaflets [are/are not] identified. The chordae tendineae are [intact/ruptured/fused/thickened]. The papillary muscles are [hypertrophied/unremarkable]. Vegetations [are/are not] identified. Gross photographs are taken. Representative sections are submitted, following decalcification [describe cassette submission].

Cassette Submission: One cassette of representative tissue, decal as needed



Copyright © 2005 by Elsevier Inc.