

BUILDING A PATHWAY TO CARE



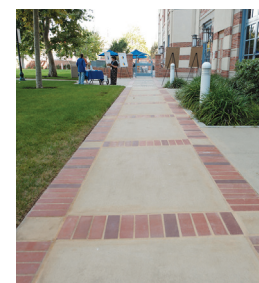
Together, we can build a pathway to care at UCLA Santa Monica Medical Center. For a limited time, you can purchase a garden pathway panel, cement paver or brick in honor or memory of a person or event. In addition to creating a lasting tribute, your tax-deductible gift will go toward Partnership for Care - Santa Monica, a fund that enhances valuable programs and compassionate services that bring dignity and hope to the healing process.

Panels, pavers and bricks are available at Harman Garden Plaza, located on Wilshire Boulevard between 15th and 16th Street. By donating to Partnership for Care - Santa Monica, you will preserve your place in history at UCLA Santa Monica Medical Center while providing crucial resources.

I am pleased to support Partnership for Care - Santa Monica.

- Checks should be made out to **The UCLA Foundation**.
- Visit uclahealth.org/smpathway to make a gift online.

- ☐ \$10,000 **garden pathway panel** (4' x 6')
- ☐ \$5,000 **garden pathway paver** (11.5" x 11.5")
- ☐ \$1,500 **garden pathway brick**



Sample panel and paver



Sample brick

Name

☐ This is a joint gift. Spouse/Partner name

Address City State ZIP code

Phone Email

Credit card # Exp. date (month/year)

Panel (maximum of three lines of 25 characters per line) **Paver** (maximum of three lines of 20 characters per line)

Brick (maximum of two lines of 20 characters per line)

Please print the personalized message that should appear on your panel, paver or brick in the boxes below (font will be UCLA Gothic and in Title Case).

A horizontal bar divided into 45 equal segments. Below the bar, numerical labels are placed at intervals of 5 units: 1, 5, 10, 15, 20, 25, 30, 35, 40, and 45.

A horizontal bar divided into 45 equal segments. The segments are numbered 1 through 45, with labels placed below the bar at intervals of 5 units (1, 5, 10, 15, 20, 25, 30, 35, 40, 45).

A horizontal bar divided into 45 equal segments. The segments are numbered 1 through 45, with labels placed below the bar at intervals of 5 units (1, 5, 10, 15, 20, 25, 30, 35, 40, 45).

Tribute information

This donation is: ☐ in honor of ☐ in memory of

Please notify

Address	City	State	ZIP code
---------	------	-------	----------

RETURN THIS FORM AND PAYMENT TO:
THE UCLA FOUNDATION
C/O "PARTNERSHIP FOR CARE - SANTA MONICA"
P.O. BOX 7145
PASADENA, CA 91109-7145

For inquiries, contact the UCLA Health Sciences Development office at hsdannualgiving@support.ucla.edu or 844-474-4387.

If you do not wish to receive further fundraising information from UCLA Health Sciences, please either call us at 855-364-6945 or email us at hsd_optoutucla@mednet.ucla.edu and provide your name, address, phone number and from which department you are requesting to be removed.

Please review UCLA and The UCLA Foundation's Disclosure Statements for Prospective Donors at <https://mygiving.ucla.edu/faq#disclosure>. Should this fund reach the campus minimum required for the establishment of an endowment or quasi-endowment, The UCLA Foundation reserves the right to convert this fund to an endowment or quasi-endowment.