

**UCLA**

**David Geffen School of Medicine**

Dumont-UCLA Transplant Center, Dumont-UCLA Liver Cancer Center, and Pflieger Liver Institute

Present

# 15th Annual UCLA Liver Diseases Symposium

*Available as both LIVE in-person and virtual learning*

**2022**

**Saturday, January 22, 2022  
8:30 am - 12:30 pm (PST)**

***A Hybrid CME Conference***

**Four Seasons Hotel Westlake Village  
Two Dole Drive  
Westlake Village, CA 91362**

**CME** OFFICE OF  
CONTINUING  
MEDICAL  
EDUCATION

DAVID GEFFEN SCHOOL OF MEDICINE at UCLA

# 15th Annual UCLA Liver Diseases Symposium

## Program

- 7:45            **Breakfast & Registration**
- 8:30            **Welcome & Introduction**  
*Sammy Saab, MD, MPH and  
Fady Kaldas, MD*
- 8:35            **“B, C, and D” of Viral Hepatitis Soup**  
*Sammy Saab, MD, MPH*
- 9:00            **Uncommon Indications for Liver  
Transplantation & When To Refer For  
OLT**  
*Fady Kaldas, MD*
- 9:25            **Role of TIPS in the Management of  
Cirrhosis Portal Hypertension**  
*Edward Lee, MD, PhD*
- 9:50            **Update on Biomarkers for Liver Cancer  
Screening**  
*Vatche Agopian, MD*
- 10:15          **Break**

# *A Hybrid CME Conference*

## **Saturday, January 22, 2022**

### **Program**

- 10:30      **Role of Palliative Care in Patients with Advanced Liver Disease**  
*Arpan Patel, MD, PhD*
- 10:55      **Current and Future Therapy of NASH**  
*Jihane Benhammou, MD, PhD*
- 11:20      **Long Term Management of Liver Transplant Recipients**  
*Gina Choi, MD*
- 11:45      **Debate: Role of Liver Transplantation in Patients with Alcoholic Hepatitis**  
**Debaters:** *Douglas Farmer, MD and Beshoy Yanny, MD*  
**Moderator:** *Steven-Huy Han, MD*
- 12:15      **Panel Discussion: Question and Answer**  
**Moderator:** *Sammy Saab, MD, MPH*
- 12:25      **Closing Remarks**  
*Douglas Farmer, MD*
- 12:30      **Adjourn**  
*Douglas Farmer, MD*

# General Information

**Saturday, January 22, 2022**

**8:30 am – 12:30 pm**

**Where:**

Four Seasons Hotel Westlake Village  
Two Dole Drive  
Westlake Village, CA 91362  
(818) 575-3000

**Conference Location:**

Sound Stage Room

**Parking:**

Valet parking \$13

**In-person attendees will be provided breakfast and refreshments at the conference.**

The 15th Annual UCLA Liver Diseases Symposium will also be available through a live virtual meeting web platform.

- Attendees who choose to attend the live virtual activity will receive a virtual meeting link and password to access the live virtual conference.
- All registrants (live or virtual) will be provided the opportunity to review recorded sessions up to 3 weeks following the conference.
- Attendees will be awarded CME credit commensurate with the extent of their participation in the live activity (either in-person or virtual). The recorded sessions are not certified for CME credit.

**In the event in-person attendance is cancelled or capacity limits modified per CDC or public health guidelines, the UCLA Liver Diseases conference will be modified accordingly or presented entirely as a live virtual activity.**

**Enrollment:**

*Online*

Go to [www.cme.ucla.edu/courses](http://www.cme.ucla.edu/courses) and click on 15th Annual UCLA Liver Diseases Symposium. You may use your MasterCard, Visa, American Express, or Discover card.

*By Mail*

Mail the attached form to the Office of Continuing Medical Education, David Geffen School of Medicine at UCLA, 15th Annual UCLA Liver Diseases Symposium, 10920 Wilshire Blvd., Suite 1060, Los Angeles, CA 90024-6512.

*By Fax*

Send the completed enrollment form with your charge card information and authorizing signature to (310) 794-2624.

**Any questions, please email the UCLA CME Office at [UCLACME@mednet.ucla.edu](mailto:UCLACME@mednet.ucla.edu) or call 310-794-2620**

**Accreditation**

The Office of Continuing Medical Education, David Geffen School of Medicine at UCLA is accredited by the Accreditation Council for Continuing Medical Education to provide continuing medical education for physicians.

The Office of Continuing Medical Education, David Geffen School of Medicine at UCLA designates this live activity for a maximum of 3.75 *AMA PRA Category 1 Credits™*. Physicians should claim only the credit commensurate with the extent of their participation in the activity.

The California State Board of Registered Nursing accepts courses approved by the AMA for category 1 credit as meeting the continuing education requirements for license renewal. Nurses from states other than California should inquire with their local State Board for specific continuing education policies.

**Disclosure Statement**

The FDA has issued a concept paper which classifies commercial support of scientific and educational programs as promotional unless it can be affirmed that the program is “truly independent” and free of commercial influence. In addition to independence, the FDA requires that non-promotional, commercially supported education be objective, balanced, and scientifically rigorous. The policy further states that all potential conflicts of interest of the CME staff and faculty be fully disclosed to the program’s participants. In addition, Accreditation Council for Continuing Medical Education policy mandates that the provider adequately manages all identified potential conflicts of interest prior to the program. We, at UCLA, fully endorse the letter and spirit of these concepts.

# 15th Annual UCLA Liver Diseases Symposium

## *A Hybrid CME Conference*

Application for Enrollment

Course Title and Number	Amount
<b>15th Annual UCLA Liver Diseases Symposium</b> <b>M212-25</b> <b><i>A Hybrid CME Conference</i></b> <b>Saturday, January 22, 2022</b> Will you be attending Live or Virtually? (please check only one option) <b>Live    Virtual</b> <input type="checkbox"/> <input type="checkbox"/> \$50 Physicians <input type="checkbox"/> <input type="checkbox"/> \$35 Nurses and Other Allied Healthcare Professionals <input type="checkbox"/> <input type="checkbox"/> \$25 Fellows and Residents	\$

\_\_\_\_\_  
Last four digits of your Social Security Number

\_\_\_\_\_  
Name (First/Middle/Last)

\_\_\_\_\_  
Degree

\_\_\_\_\_  
Specialty

\_\_\_\_\_  
Mailing Address

\_\_\_\_\_  
City/State/Zip

(\_\_\_\_\_) \_\_\_\_\_

Area Code

Daytime Phone

(\_\_\_\_\_) \_\_\_\_\_

Area Code    Fax Number

\_\_\_\_\_  
E-mail

Check enclosed payable to: The Regents of the University of California

Charge:     MasterCard     Visa     American Express     Discover

\_\_\_\_\_  
Authorizing Signature

\_\_\_\_\_  
Expiration (Mo/Yr)

\_\_\_\_\_  
Name of Cardholder

For quickest registration processing, please register online at [www.cme.ucla.edu/courses](http://www.cme.ucla.edu/courses). Click on 15th Annual UCLA Liver Diseases Symposium. You will be able to register under the "Registration Information" tab.

Registration will also be accepted via Fax. Fax with credit card and expiration date directly to our office at (310) 794-2624, or Mail to: Office of Continuing Medical Education, David Geffen School of Medicine at UCLA, 15th Annual UCLA Liver Diseases Symposium, 10920 Wilshire Blvd., Suite 1060, Los Angeles, CA 90024-6512.

Due to the low enrollment fee, no refunds will be offered. A full refund will be provided if this course is cancelled, or postponed.

Please visit our website for other UCLA CME offerings at <http://www.cme.ucla.edu>

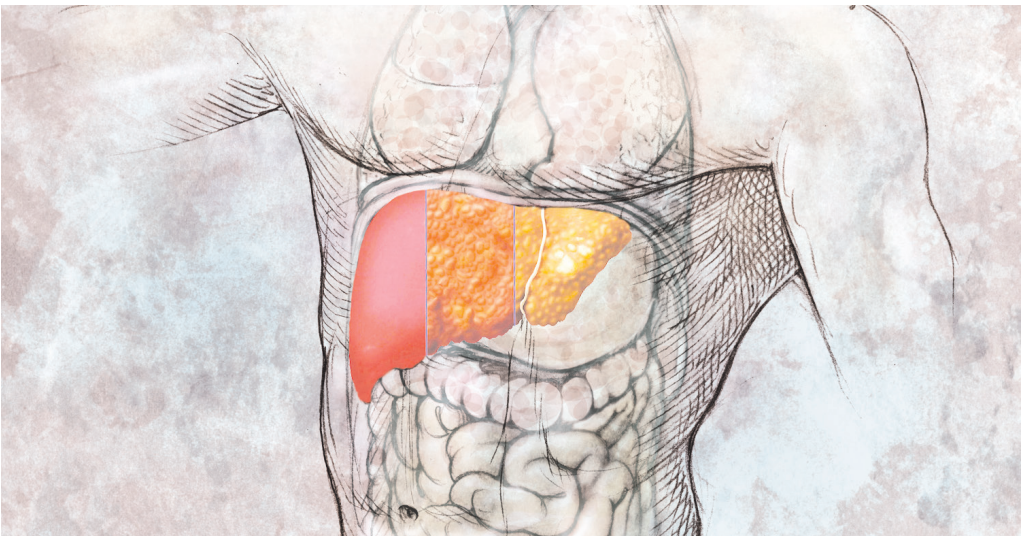
# Course Description

The 15th Annual UCLA Liver Diseases Virtual Symposium will provide a state-of-the-art update and scientific exchange on prevalent liver diseases and their complications using a multi-disciplinary approach with hepatologists, radiologists and surgeons.

## Course Objectives

At the conclusion of this program, participants will be able to:

- Identify liver failure milestones in patients with cirrhosis and understand the role of liver transplantation.
- Review the pros and cons of Transjugular Intrahepatic Portosystemic Shunts in patients with cirrhosis and portal hypertension.
- Discuss updates in the management of patients with viral hepatitis B, C, and D.
- Define patients at risk for hepatocellular carcinoma and utilize serum biomarkers and imaging for its early identification and intervention.
- Review the treatment of alcoholic hepatitis and understand controversies associated with early liver transplantation.
- Treat non-alcoholic fatty liver disease and employ non-invasive tests for diagnosis.
- Discuss the role of palliative care in patients with advanced liver disease.



# David Geffen School of Medicine at UCLA Faculty

## CHAIR

### **Sammy Saab, MD, MPH, AGAF, FACG, FAASLD**

Professor of Medicine and Surgery  
Medical Director, Pflieger Liver  
Institute  
Medical Director, Adult Liver  
Transplant Program  
Chief, Transplant Hepatology  
Head, Outcomes Research in  
Hepatology  
Adjunct Professor of Nursing

## CO-CHAIR

### **Fady Kaldas, MD, FACS**

Kelly Lee Tarantello Chair in  
Integrative Liver Transplantation  
Associate Professor of Surgery  
Director, Multi-Organ Transplantation  
Fellowship Program  
Director, Liver Transplant Service  
Co-Director, Heart – Liver Disease  
Program

## FACULTY

### **Vatche Agopian, MD**

Associate Professor of Surgery  
Associate Director, General Surgery  
Residency Program  
Director, Dumont-UCLA Liver Cancer  
Center

### **Jihane Benhammou, MD, PhD**

Assistant Professor of Medicine  
Staff Hepatologist, West Los Angeles  
VA Medical Center

### **Gina Choi, MD**

Assistant Professor of Medicine and  
Surgery  
Associate Director, Transplant  
Hepatology Fellowship Program

### **Douglas G. Farmer, MD, FACS**

Professor of Surgery  
Director, Intestinal Transplant Program  
Director, Pediatric Liver Transplant  
Program  
Interim Chief, Division of Liver and  
Pancreas Transplantation

### **Steven-Huy B. Han, MD, AGAF, FAASLD**

Philip L. Palumbo Chair in Clinical  
Hepatology  
Professor of Medicine and Surgery  
Program Director, Transplant  
Hepatology Fellowship

### **Edward Wolfgang Lee, MD, PhD, FSIR**

Associate Professor of Radiology and  
Surgery  
Director of Interventional Radiology  
Residency  
Director of Research  
Director of Lymphatic Intervention

### **Arpan A. Patel, MD, PhD**

Assistant Professor of Medicine  
Staff Hepatologist, West Los Angeles  
VA Medical Center

### **Beshoy T. Yanny, MD**

Assistant Professor of Medicine  
Program Leader, Hepatology  
UCLA Medical Center, Santa Monica

**UCLA Office of Continuing Medical Education**  
David Geffen School of Medicine at UCLA  
405 Hilgard Avenue MC 29  
Los Angeles, California 90095-6938

NON-PROFIT ORG.  
U.S. POSTAGE  
**PAID**  
UNIVERSITY OF CALIFORNIA,  
LOS ANGELES

**15th Annual UCLA  
Liver Diseases Symposium**  
*Available as both LIVE in-person  
and virtual learning*

**Saturday, January 22, 2022  
8:30 am - 12:30 pm (PST)**

***A Hybrid CME Conference***

**Four Seasons Hotel Westlake Village  
Two Dole Drive  
Westlake Village, CA 91362**