

**UCLA**

**David Geffen School of Medicine**

Dumont-UCLA Transplant Center, Dumont-UCLA Liver Cancer Center, and Pflieger Liver Institute

Present

**14th Annual  
UCLA Liver Diseases Symposium**  
*A Live Virtual Education Conference*

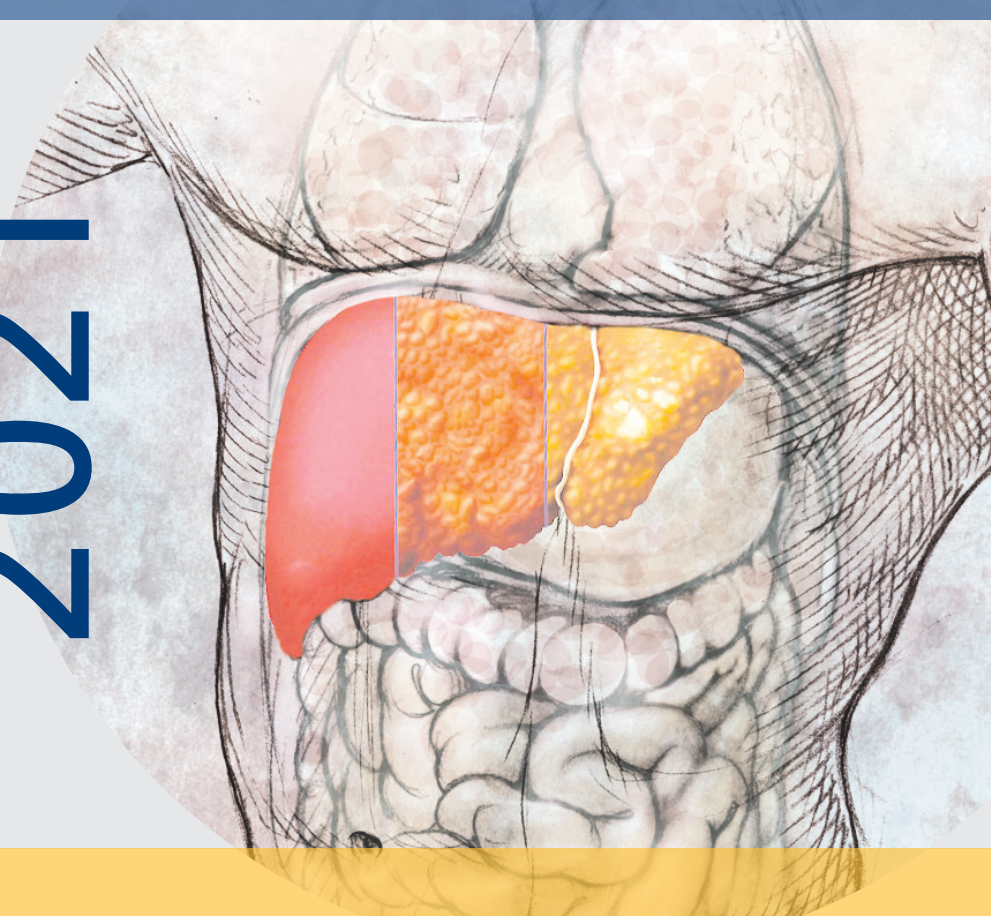
**2021**

**Saturday, April 24, 2021**  
**8:30 am – 12:30 pm (PDT)**

*Live Virtual Education Conference*

**CME** OFFICE OF  
CONTINUING  
MEDICAL  
EDUCATION

DAVID GEFFEN SCHOOL OF MEDICINE at **UCLA**



# 14th Annual UCLA Liver Diseases Symposium

## Program

- 8:00            **Sign-in and Visit Virtual Exhibit Hall**
- 8:30            **Introduction and Welcome**  
*Sammy Saab, MD, MPH and  
Fady Kaldas, MD*
- 8:35            **Diagnosis and Management in Acute  
Liver Failure**  
*Douglas Farmer, MD*
- 9:00            **Approach to Alcohol Hepatitis**  
*Sammy Saab, MD, MPH*
- 9:25            **Case Discussion in Hepatobiliary  
Malignancies**  
*Vatche Agopian, MD*
- 9:50            **Long Term Medical Management of  
Liver Transplant Recipients**  
*Gina Choi, MD*
- 10:15          **Break and Visit Virtual Exhibit Hall**

# *A Live Virtual Education Conference*

**Saturday, April 24th, 2021**

## **Program**

- 10:30      **Hepatitis B + C: A Clinical Review**  
*Steven Han, MD*
- 10:55      **Pushing the Envelope: Heart –  
Liver Transplantation**  
*Fady Kaldas, MD*
- 11:25      **Update in Liver Transplant Listing**  
*Joseph DiNorcia, MD*
- 11:50      **Panel Discussion: Question and Answer**
- 12:15      **Closing Remarks**  
*Mohamed El Kabany, MD and  
Douglas Farmer, MD*
- 12:30      **Adjourn**

# General Information

## OFFERED ENTIRELY REMOTELY!

The **14th Annual UCLA Liver Diseases Virtual Symposium** will be available through a live virtual meeting web platform.

- Registrants will be able to participate live in the **UCLA Liver Diseases Virtual Symposium**.
- Registrants will receive a virtual meeting link and password to access the virtual conference.
- Registrants will be provided the opportunity to review recorded sessions up to 3 weeks following the conference.

### *Online*

Go to [www.cme.ucla.edu/courses](http://www.cme.ucla.edu/courses) and click on 14th Annual UCLA Liver Diseases Symposium. You may use your MasterCard, Visa, American Express, or Discover card.

### *By Mail*

Mail the attached form to the Office of Continuing Medical Education, David Geffen School of Medicine at UCLA, 14th Annual UCLA Liver Diseases Symposium, 10920 Wilshire Blvd., Suite 1060, Los Angeles, CA 90024-6512.

### *By Fax*

Send the completed enrollment form with your charge card information and authorizing signature to (310) 794-2624.

**Any questions, please email the UCLA CME Office at [UCLACME@mednet.ucla.edu](mailto:UCLACME@mednet.ucla.edu), or call 310-794-2620**

## **Accreditation**

The Office of Continuing Medical Education, David Geffen School of Medicine at UCLA is accredited by the Accreditation Council for Continuing Medical Education to provide continuing medical education for physicians.

The Office of Continuing Medical Education, David Geffen School of Medicine at UCLA designates this live activity for a maximum of 3.75 *AMA PRA Category 1 Credits™*. Physicians should claim only the credit commensurate with the extent of their participation in the activity.

The California State Board of Registered Nursing accepts courses approved by the AMA for category 1 credit as meeting the continuing education requirements for license renewal. Nurses from states other than California should inquire with their local State Board for specific continuing education policies.

## **Disclosure Statement**

The FDA has issued a concept paper which classifies commercial support of scientific and educational programs as promotional unless it can be affirmed that the program is “truly independent” and free of commercial influence. In addition to independence, the FDA requires that non-promotional, commercially supported education be objective, balanced, and scientifically rigorous. The policy further states that all potential conflicts of interest of the CME staff and faculty be fully disclosed to the program’s participants. In addition, Accreditation Council for Continuing Medical Education policy mandates that the provider adequately manages all identified potential conflicts of interest prior to the program. We, at UCLA, fully endorse the letter and spirit of these concepts.

# 14th Annual UCLA Liver Diseases Symposium

## *A Live Virtual Education Conference*

Application for Enrollment

Course Title and Number	Amount
<b>14th Annual UCLA Liver Diseases Symposium</b> <b>M201-23</b> <b><i>A Live Virtual Education Conference</i></b> <b>Saturday, April 24, 2021</b> Fees: \$50 Physicians \$35 Nurses and Other Allied Healthcare Professionals \$25 Fellows and Residents	\$

*Please print*

\_\_\_\_\_

Last four digits of your Social Security Number

\_\_\_\_\_

Name (First/Middle/Last)

\_\_\_\_\_

Degree

\_\_\_\_\_

Specialty

\_\_\_\_\_

Mailing Address

\_\_\_\_\_

City/State/Zip

( \_\_\_\_\_ ) \_\_\_\_\_

Area Code

Daytime Phone

( \_\_\_\_\_ ) \_\_\_\_\_

Area Code    Fax Number

\_\_\_\_\_

E-mail

Check enclosed payable to: The Regents of the University of California

Charge:    MasterCard    Visa    American Express    Discover

\_\_\_\_\_

Authorizing Signature

\_\_\_\_\_

Expiration (Mo/Yr)

\_\_\_\_\_

Name of Cardholder

For quickest registration processing, please register online at [www.cme.ucla.edu/courses](http://www.cme.ucla.edu/courses). Click on 14th Annual UCLA Liver Diseases Symposium. You will be able to register under the "Registration Information" tab.

Registration will also be accepted via Fax. Fax with credit card and expiration date directly to our office at (310) 794-2624, or Mail to: Office of Continuing Medical Education, David Geffen School of Medicine at UCLA, 14th Annual UCLA Liver Diseases Symposium, 10920 Wilshire Blvd., Suite 1060, Los Angeles, CA 90024-6512.

Due to the low enrollment fee, no refunds will be offered. A full refund will be provided if this course is cancelled, or postponed.

Please visit our website for other UCLA CME offerings at <http://www.cme.ucla.edu>

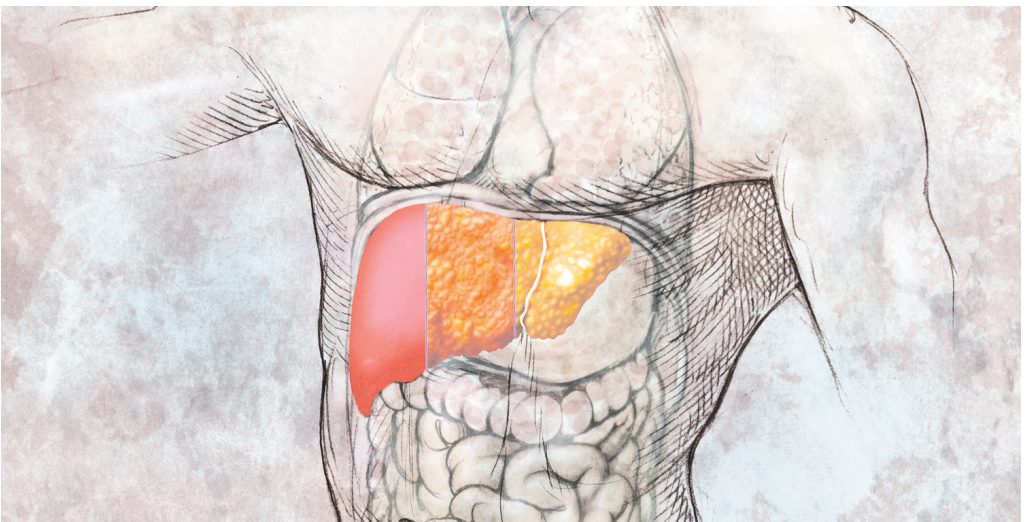
# Course Description

The 14th Annual UCLA Liver Diseases Virtual Symposium will provide a state-of-the-art update and scientific exchange on prevalent liver diseases and their complications using a multi-disciplinary approach with hepatologists and surgeons.

## Course Objectives

At the conclusion of this program, participants will be able to:

- Highlight recent advances in the diagnosis and management of acute liver failure and understand the role of liver transplantation.
- Review treatment approaches for alcohol hepatitis, and updated guidelines for liver transplant candidacy.
- Identify the current approach and treatment of hepatobiliary malignancies.
- Provide long-term medical care for liver transplant recipients.
- Discuss updates in the management of patients with viral hepatitis B and C.
- Review updated procedures for liver transplant listing, including combined heart/liver transplantation.





# David Geffen School of Medicine at UCLA Faculty

## CHAIR

**Sammy Saab, MD, MPH, AGAF, FACG, FAASLD**

Medical Director, Pflieger Liver Institute  
Medical Director, Adult Liver Transplant Program  
Chief, Transplant Hepatology  
Head, Outcomes Research in Hepatology  
Professor of Medicine and Surgery  
Adjunct Professor of Nursing

## CO-CHAIR

**Fady Kaldas, MD, FACS**

Associate Professor of Surgery  
Kelly Lee Tarantello Chair in Integrative Liver Transplantation  
Director, Multi-Organ Transplantation Fellowship Program  
Director, Liver Transplant Service  
Co-Director, Heart – Liver Disease Program

## FACULTY

**Vatche Agopian, MD**

Associate Professor of Surgery  
Associate Director, General Surgery Residency Program  
Director, Dumont-UCLA Liver Cancer Center

**Gina Choi, MD**

Assistant Clinical Professor of Medicine and Surgery  
Associate Director, Transplant Hepatology Fellowship Program

**Joseph DiNorcia III, MD, MS**

Assistant Professor of Surgery  
Director, Living Donor Liver Transplantation

**Mohamed El Kabany, MD**

Associate Clinical Professor of Medicine

**Douglas G. Farmer, MD, FACS**

Professor of Surgery  
Director, Intestinal Transplant Program  
Director, Pediatric Liver Transplant Program  
Interim Chief, Division of Liver and Pancreas Transplantation

**Steven Han, MD, AGAF, FAASLD**

Professor of Medicine and Surgery  
Director, Transplant Hepatology Fellowship Program  
Director, Hepatology Clinical Research Center

**UCLA Office of Continuing Medical Education**  
David Geffen School of Medicine at UCLA  
405 Hilgard Avenue MC 29  
Los Angeles, California 90095-6938

NON-PROFIT ORG.  
U.S. POSTAGE  
**PAID**  
UNIVERSITY OF CALIFORNIA,  
LOS ANGELES

# 14th Annual UCLA Liver Diseases Symposium

**Saturday, April 24, 2021**  
**8:30 am – 12:30 pm (PDT)**

*Live Virtual Education Conference*