

CARDIOVASCULAR PATHOLOGY GROSSING GUIDELINES

NOTE: Please review all complex or “interesting” gross specimens with the HL attending assigned to the case.

Specimen Type: NATIVE HEART VALVES

Procedure:

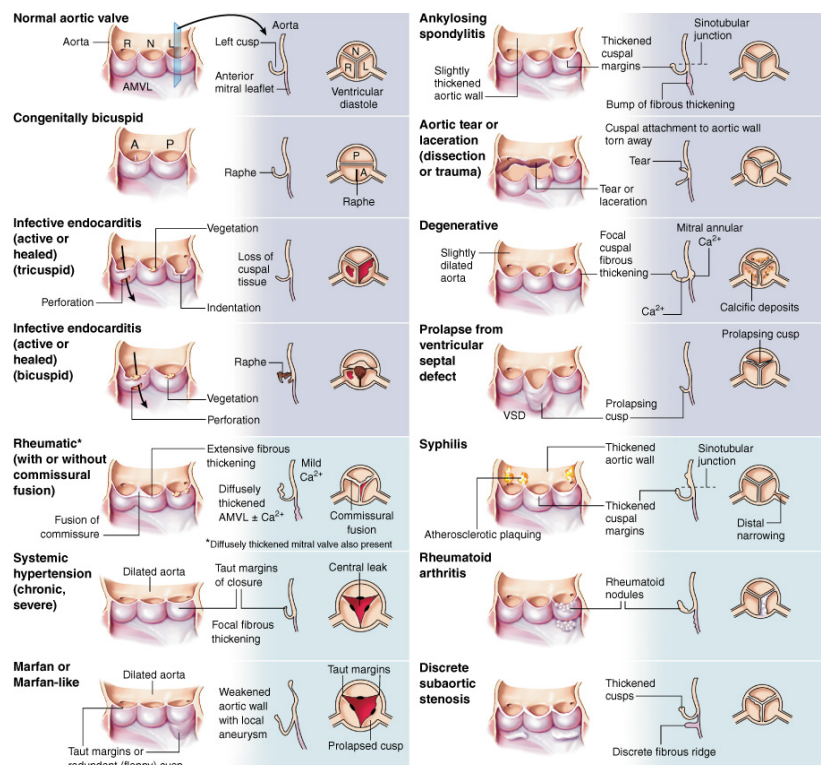
1. Take gross photographs
2. Measure, range and aggregate
3. Document presence of lesions, vegetations, calcifications

Gross Template:

MMODAL COMMAND: INSERT HEART VALVE

It consists of multiple yellow-tan soft tissue fragments measuring [*measure in three dimensions****] cm in aggregate. The [*cusps or leaflets****] are [*yellow, smooth, calcified, and intact****]. Tears in the leaflets [*are/are not****] identified. The papillary muscles are [*hypertrophied/unremarkable/not present****]. Gross photographs are taken. Representative sections are submitted, [*describe cassette submission noting blocks needing decalcification and whether stat or EDTA decal is used****].

Cassette Submission: One cassette of representative tissue, decal as needed



Copyright © 2005 by Elsevier Inc.