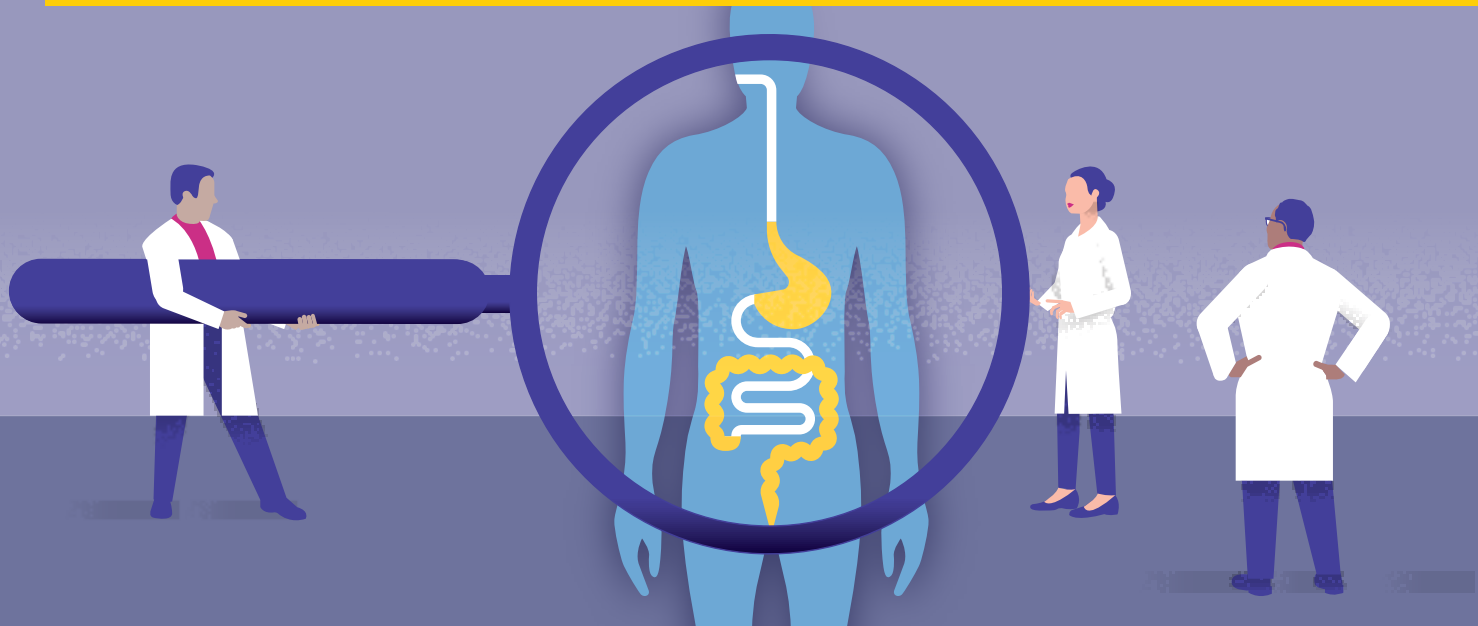


# Secretin Stimulation Study Preparation Instructions



- ☐ **DISCUSS MEDICATIONS** and any health conditions you have with your doctor. Your doctor will provide instructions for how to appropriately adjust your medications prior to your test. Instructions may include the following changes:
- If you are diabetic, your medications might need to be adjusted. Please consult your prescribing doctor.
  - Take scheduled medications at least 2 hours prior to your test with a small amount of water.



- ☐ **SCHEDULE** your secretin stimulation study. Please call our **Patient Communication Center (PCC) at 310-825-7540** to schedule your secretin stimulation study, if it was not scheduled for you at your clinic appointment. Note: The PCC may also call you to schedule the procedure.



- LOCATION** Your secretin stimulation study will be performed by a **nurse** at the location listed:

- ☐ **UCLA Medical Center**  
**100 UCLA Medical Plaza #205**  
Los Angeles, CA 90095

Date \_\_\_\_\_

Time \_\_\_\_\_

*(Please check in 30 minutes before procedure time)*

## IF YOU ARE ON ANY MEDICATIONS LISTED BELOW, PLEASE FOLLOW THESE INSTRUCTIONS:



### 7 DAYS BEFORE YOUR TEST

- STOP TAKING proton pump inhibitors. This includes, but is not limited to rabeprazole (Aciphex), omeprazole (Prilosec), lansoprazole (Prevacid), dexlansoprazole (Dexilant), esomeprazole (Nexium), pantoprazole (Protonix).
- START TAKING famotidine 40 mg (Pepcid) every 6 hours.



### 2 DAYS BEFORE YOUR TEST

- STOP TAKING famotidine.
- START TAKING an antacid (Maalox, Mylanta, Rolaids, or TUMS) as needed until midnight the night before your test.



**12 HOURS BEFORE** your procedure, do not eat or drink anything.



**THE MORNING OF YOUR TEST** take all other usual morning medications with a sip of water unless otherwise instructed by your doctor.

## WHAT IS A SECRETIN STIMULATION STUDY AND WHAT CAN I EXPECT DURING THE PROCEDURE?

Secretin stimulation studies are used to measure gastrin levels after receiving a hormone called secretin. Gastrin and secretin are involved in the digestive process.

The amount of gastrin in your blood will be checked before and after you receive a dose of secretin.

During this procedure, a nurse will draw blood from you seven different times. To avoid inserting a needle each time, the nurse will place a peripheral IV in your arm. During each blood draw a small amount of blood is drawn (about a teaspoon). The IV also allows the nurse to give you a dose of secretin.

The nurse will draw blood twice before administering the secretin. After the secretin is given, the nurse will draw blood 5 more times at different timed intervals. Once the blood draws are done, the nurse will remove the IV, and you can return to your usual activities. The test takes about an hour to complete.

