

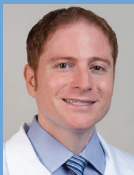


10th Annual UCLA Musculoskeletal Ultrasound Course and Hands-on Workshop

Featuring Concurrent Introductory and Intermediate Level Tracks



- Small group hands-on workshops
- Live, split-screen video demonstrations
- Current and updated lecture topics
- Multidisciplinary faculty



Benjamin D. Levine, MD
Course Director
Associate Clinical Professor of Radiology
Director, Musculoskeletal Interventions
Musculoskeletal Imaging
Department of Radiological Sciences
David Geffen School of Medicine at UCLA

January 25 & 26, 2020
**Course and
Hands-on Workshop**

UCLA Medical Center, Santa Monica

Registration and
course information

www.uclahealth.org/radiology/cme

DEPARTMENT HIGHLIGHTS

Westlake Village Women's Imaging Center



UCLA Westlake Village Women's Imaging Center
30700 Russell Ranch Road, Suite #110, Westlake Village, CA 91362
Central scheduling: 310-301-6800

Early detection and improved treatment have led to decreased mortality rates for those diagnosed with breast cancer, and screening reduces mortality by more than 40% in women 40 and older, says Dr. Doepke, the medical director of the new UCLA Westlake Village Women's Imaging Center that recently opened its doors to provide local women with potentially life-saving imaging services.

Visit UCLAHealth.org/Radiology/WLVVIC to learn more.

Breast Imaging at UCLA provides a full range of high quality and innovative breast imaging studies, treatments and procedures to the greater Los Angeles area, with locations in Westwood, Santa Monica, Santa Clarita, Manhattan Beach, Palos Verdes and Westlake Village.