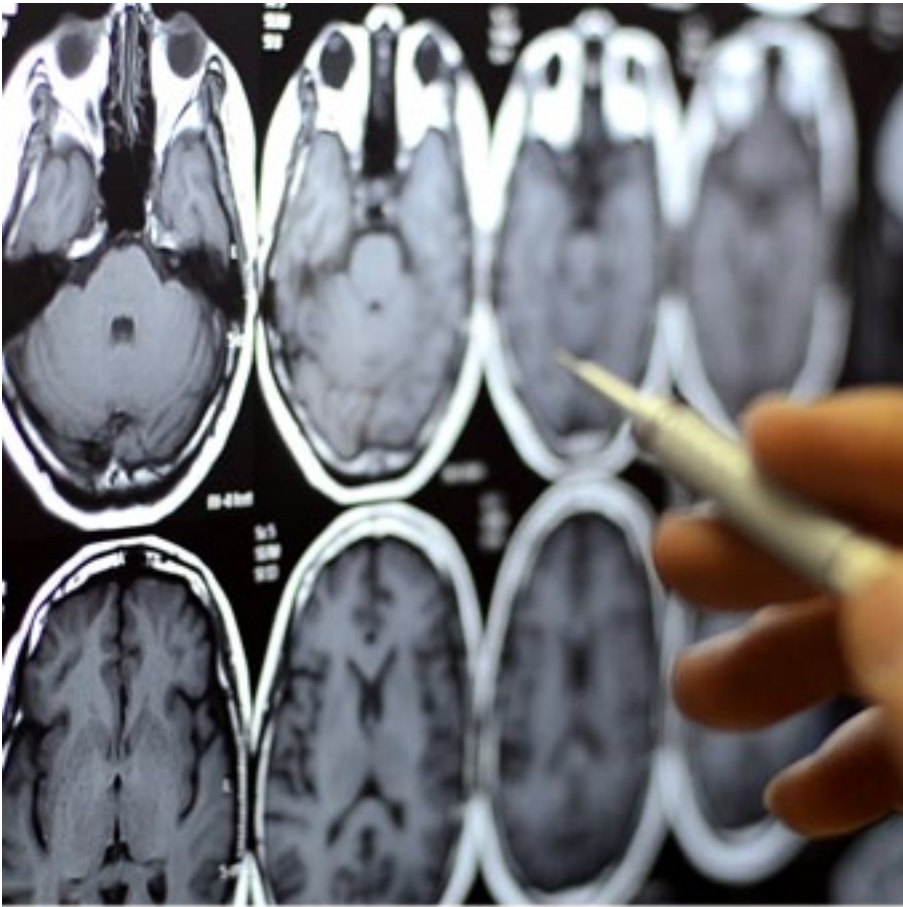


Metastatic Brain Tumor**Overview**

This is a cancer that began elsewhere in your body and then spread to your brain, forming one or more tumors. Many different cancers can spread this way. These tumors are actually more common than tumors that begin in the brain's own tissues.

Causes

A metastatic brain tumor can begin as bladder cancer, breast cancer, or a cancer of the ovaries or testes. It can begin as a cancer in your blood, kidneys, lungs or skin. And sometimes, we don't know where the cancer began.

Symptoms

Because your brain is so complex, a brain tumor can affect your mind and body in many ways. A tumor can cause physical problems, such as severe headaches, nausea, and seizures. You may feel weak and tired. You may have pain, numbness or tingling in parts of your body. A tumor can affect your vision and your speech. It can also cause your personality to change. You may have rapid mood swings. You may develop strange behaviors.

Treatment

Treatment depends on your needs. You may benefit from radiation, surgery or other options. Your healthcare provider can create a plan that's right for you.

