



# 2026 Proficiency Testing Programs



# About Us

---

The UCLA Immunogenetics Center is a World Health Organization reference laboratory and is internationally renowned as a pioneer in Human Leukocyte Antigen (HLA) typing.

---

Since 1974, our programs have continued to fulfill the need for proficiency testing in the field of Histocompatibility and Immunogenetics.

---

**Program benefits include:**

Quality Control

Validation of methods and reagents

Educational Challenges

Standardization of classical and non-classical allele typing

# International Cell Exchange

**SERVICES:** PROFICIENCY TESTING FOR FLOW CROSSMATCH, MOLECULAR TYPING (HLA, KIR, MICA) AND ANTIBODY IDENTIFICATION

## **Single Antigen, Flow and Virtual Crossmatch Exchange:**

- Four - 500  $\mu$ l anti-HLA sera + Two - 9 ml whole blood samples sent 3 times/year (12 sera/6 cells total)
- Flow cytometric crossmatch and antibody identification (SAB)
- Virtual Paper Challenge - 6 virtual crossmatches per challenge

## **INTERNATIONAL KIR AND MICA EXCHANGE**

- Six - 100  $\mu$ l DNA samples for KIR and/or MICA genotyping sent 2 times/year (12 samples total)

## **SERUM EXCHANGE**

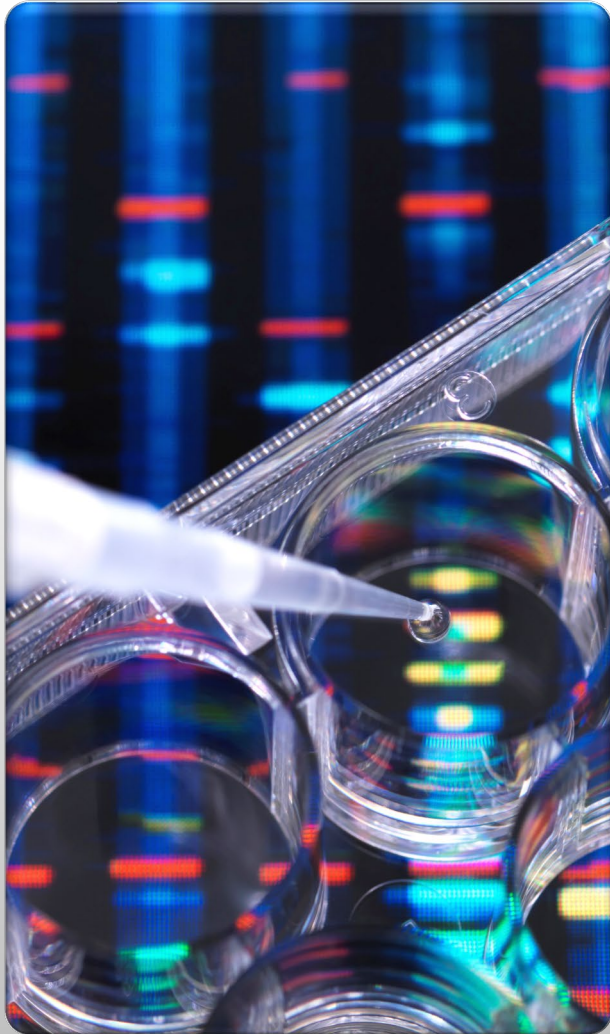
- Five - 500  $\mu$ l anti-HLA sera for class I/II antibody identification sent 3 times/year (15 samples total)

## **B-CELL LINE EXCHANGE**

- Three - 3 ml cultured B-cell line suspensions for class I/II DNA typing sent 4 times/year (12 cells total)







# INTERNATIONAL HLA DNA EXCHANGE

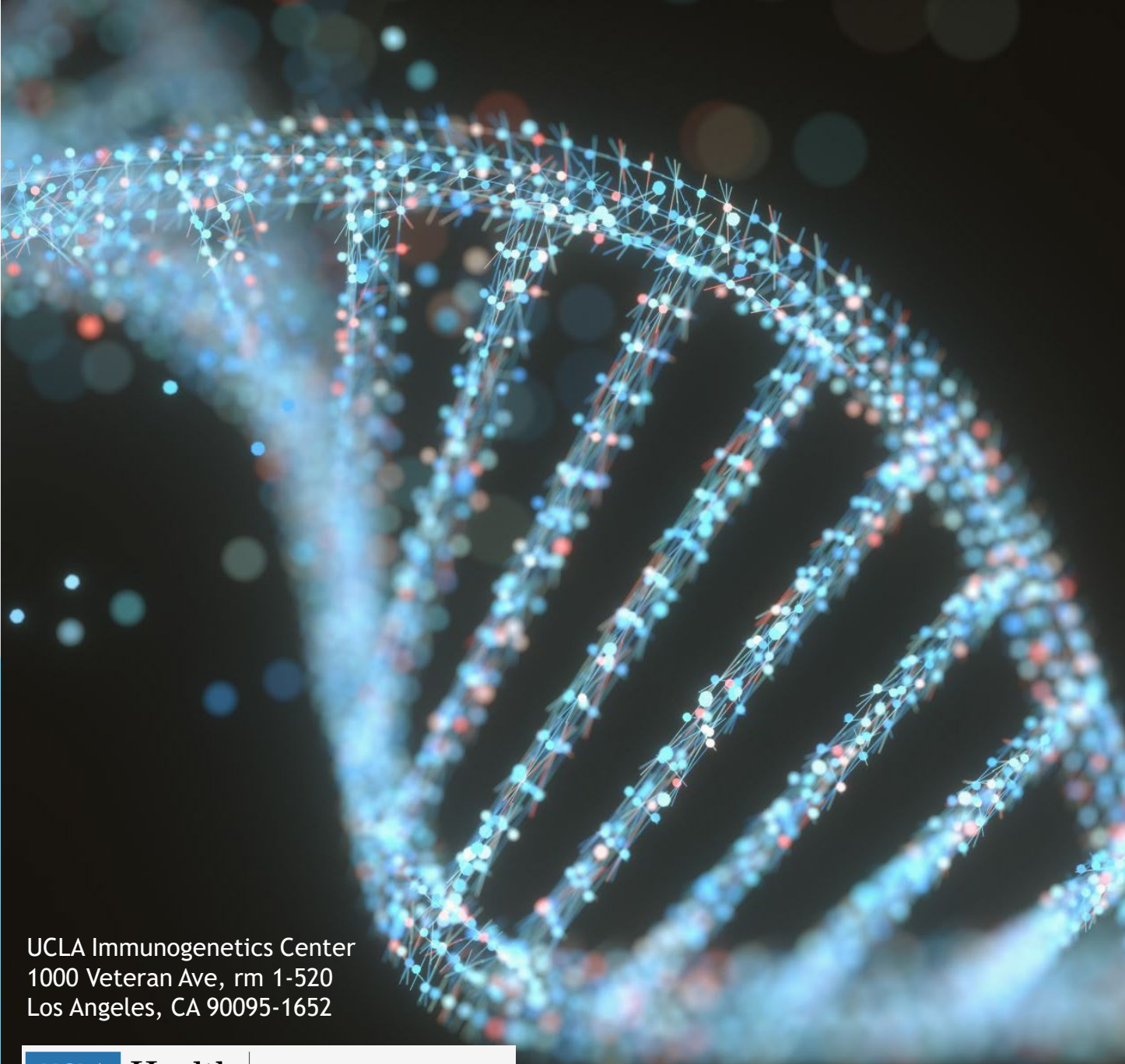
## SERVICES: PROFICIENCY TESTING FOR HLA MOLECULAR TYPING

- 6 - 50  $\mu$ l DNA samples sent 4 times/year (24 samples total)
- High and low-resolution grading (class I and class II typing)
- Reporting of HLA-E, -F, -G, -H, and MICB alleles (ungraded)
- Fulfills ASHI accreditation requirements for DNA proficiency testing
- Recognized by the European Federation for Immunogenetics (EFI) as an external proficiency provider

## UCLA DNA Reference Panel

### SERVICES: REFERENCE DNA FOR HLA, KIR, AND MICA TYPING

- DNA extracts fully characterized and sequenced for class I and class II alleles. Panel sets are available in 24, 48, and 72 sample sets.
- Reference panels for KIR and MICA (24 samples each)
- NGS samples for blind testing for enhanced proficiency and customized sets



# Contact Us

## For Cell Exchange inquiries:

Arlene Locke: 310-206-3333

[Alocke@mednet.ucla.edu](mailto:Alocke@mednet.ucla.edu)

## For HLA DNA Exchange and Reference panel inquiries:

Andrea Alvarez: 310-206-8774

[AMAlvarez@mednet.ucla.edu](mailto:AMAlvarez@mednet.ucla.edu)



UCLA Immunogenetics Center  
1000 Veteran Ave, rm 1-520  
Los Angeles, CA 90095-1652