

UCLA

Health

UCLA HEALTH SCIENCES MEDIA REPORT

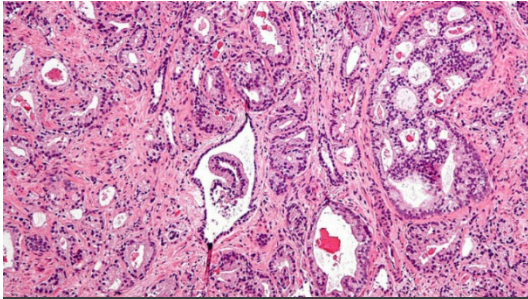
June 29 - July 5, 2018

Note: Website links may expire without notice. Some sites require password registration. If you cannot access a story or would like to obtain a copy, please call (310) 267-7022.



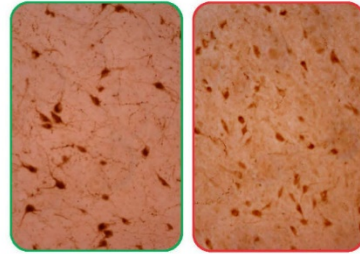
[LA Daily News](#): UCLA doctor credited with curing child with 'bubble baby' disease

(Photo: UCLA Broad Stem Cell Research Center)



[KQED](#): Screening for prostate cancer requires careful consideration

(Photo: Nephron Wikimedia Commons)



Control

Heroin addict

[Gizmodo](#): Possible connection between opiate addiction and narcolepsy

(Photo: UCLA Health)



FEATURED

UCLA doctor credited with curing child with 'bubble baby' disease

[Los Angeles Daily News](#), [Orange County Register](#), [Press-Telegram](#), [KFI AM 640](#), KTLA-TV, KNX-AM (link unavailable), [MyScience.org](#), [LA West Media](#), [California Friends of the African-American Caucus](#), [Press-Enterprise](#), [SGVTribune.com](#), [Pasadena Star-News](#), [Redlands Daily Facts](#), [DailyBulletin.com](#), [Daily Breeze](#), [Whittier Daily News](#), [San Bernardino County Sun](#) and [USA Breaking News](#) reported on an infant from Lebanon who came to UCLA for a lifesaving stem cell gene therapy treatment for an immune disorder commonly known as "bubble baby" disease. Led by Dr. Donald Kohn, "bubble baby" clinical trials have cured 30 out of 30 babies to date. Kohn is a member of the UCLA Eli and Edythe Broad Center of Regenerative Medicine and Stem Cell Research and the UCLA Jonsson Comprehensive Cancer Center and is a professor of pediatrics.

Screening for prostate cancer requires careful consideration

[KQED](#) featured Dr. Mark Litwin, chair of urology at UCLA, in an on-air discussion on KQED Forum, a popular talk show hosted by Michael Krasny, about new developments in prostate cancer screening recommendations from the U.S. Preventive Services Task Force. Litwin is a member of the UCLA Jonsson Comprehensive Cancer Center.

A possible connection between opiate addiction and narcolepsy

[Gizmodo](#) featured research led by Jerome Siegel, a professor of psychiatry and

biobehavioral sciences and director of UCLA's Center for Sleep Research, in which scientists found an abundance of a certain neurotransmitter in heroin users, the same neurotransmitter that is lacking in people with narcolepsy.

Getting the facts about breast health

[Health.com](#) featured Dr. Deanna Attai, a breast surgeon and assistant clinical professor at the David Geffen School of Medicine at UCLA, in an article providing information and advice about breast health. The article also ran in [MSN.com](#).

UCLA recognized as a hub for health care innovation

[Los Angeles Business Journal](#) (subscription required) covered the work of the UCLA Technology Development Group in a story about innovation and technology transfer in L.A. County's health care industry. Amir Naiberg, associate vice chancellor of the UCLA Technology Development Group, was quoted.

- A [second story](#) (subscription required) featured further examples of medical innovation at UCLA as presented during the inaugural UCLA Biomedical and Life Science Innovation Day on June 13. Featured elements include advancements in prostate cancer treatment led by Michael Jung, a distinguished professor of chemistry and biochemistry; the work of the UCLA Technology Development Group; research into treatment for Alzheimer's disease led by Daniel Geschwind, a professor of neurology and psychiatry and the Gordon and Virginia MacDonald Distinguished Chair in Human Genetics; a promising clinical trial for glioblastoma led by Dr. Linda Liau, chair of neurosurgery at UCLA; and CPR Palooza. Naiberg and Dr. Kelsey Martin, dean of the David Geffen School of Medicine at UCLA, were quoted. Jung and Liau are members of the UCLA Jonsson Comprehensive Cancer Center.

Transitioning babies to solid foods

[The Washington Post](#) published an article co-authored by Dr. Tanya Altmann, an assistant clinical professor of pediatrics at UCLA Mattel Children's Hospital, about what to know and avoid when it comes to transitioning babies to solid foods.

Controller of sleep-wake cycle a target for migraine treatment

[Healio](#) featured Dr. Andrew Charles, a professor of neurology and director of the Goldberg Migraine Program at UCLA, in an article about how the hypothalamus plays a pivotal role in various forms of headache.

Is there a link between migraine and stroke?

[Neurology Advisor](#) featured Dr. Andrew Charles, a professor of neurology and director of the Goldberg Migraine Program at UCLA, in an article about the relationship between hormonal contraceptives, migraine and stroke risk.

Fur seal sleep behavior sheds light on REM sleep

Milwaukee Public Radio (WUWM) aired an interview with Jerome Siegel, a professor of psychiatry and biobehavioral sciences and director of UCLA's Center for Sleep Research, about his research on the sleep patterns of fur seals.

Continued coverage of ChatterBaby app

[Daily Mail](#), [MSN.com Philippines](#), [Mom.me](#) and [The Mail on Sunday](#) reported on the launch of ChatterBaby, an app that tells deaf parents when and why their baby is crying. Ariana

Anderson, an assistant professor in residence of psychiatry and biobehavioral sciences at UCLA, commented in the segment. Chatterbaby has received extensive media coverage since its launch in early May.

Lifestyle changes can help people with obstructive sleep disorder and asthma

[Clinical Advisor](#) reported on ways in which lifestyle interventions can help patients with obstructive sleep disorder and asthma, including through weight loss and smoking cessation and by avoiding allergens that trigger asthma. The article also addressed challenges in having patients adhere to certain treatments, such as using a continuous positive airway pressure (CPAP) machine. Dr. Michelle Zeidler, an associate clinical professor of pulmonary and critical care medicine and director of the UCLA Sleep Fellowship Program, was interviewed.

More coverage of severe nausea during pregnancy

KOSA-TV, Odessa, Texas; WFRV-TV, Green Bay, Wisconsin; and WJMN-TV, Marquette, Michigan, featured an Ivanhoe News report on hyperemesis gravidarum, a condition characterized by extreme nausea and vomiting during pregnancy. Marlena Fejzo, an associate associate researcher at the David Geffen School of Medicine at UCLA, who recently discovered two genes associated with the condition, was interviewed.

Chickenpox shows how unprepared we are at the border

In an op-ed for [The Hill](#), Jonathan Fielding, a professor-in-residence of health policy and management at the UCLA Fielding School of Public Health, describes public health risks posed by the practice of placing thousands of refugees together in detention centers where infectious diseases may spread and systematic health screenings and treatment are lacking. [Kaiser Health News](#) included the op-ed in its KHN Morning Briefing.

Forecasting Alzheimer's risks

[The Pathologist](#) featured Ron Brookmeyer, a professor of biostatistics at the UCLA Fielding School of Public Health, in a Q&A article about his Alzheimer's disease research. Brookmeyer recently led a study that used a mathematical model to estimate that most people with preclinical signs of Alzheimer's will not progress to the dementia associated with the disease.

Physician-scientist recognized for enriching America through his scientific work

[HemOnc Today](#) published an article on Dr. Antoni Ribas, a professor of medicine and director of the tumor immunology program at the UCLA Jonsson Comprehensive Cancer Center. It highlighted Ribas' most recent award from the Carnegie Corporation of New York, which honored him for his work as a naturalized citizen who has made notable contributions to the progress of American society.

How to keep summer barbecues healthy and fun

A [Consumer Reports](#) article about healthy grilling featured Dr. Catherine Carpenter, a professor of clinical nutrition and a member of the UCLA Jonsson Comprehensive Cancer Center. She explained ways to help reduce the risk of cancer while grilling. KOLD-TV, Tucson, Arizona, mentioned UCLA and the Consumer Reports article in a morning news segment.

Stopping breast cancer from spreading

Action 5 news in Memphis, Tennessee, and Channel 5 News in Harlingen, Texas, aired an [Ivanhoe News](#) report on a clinical trial of new drug that could help stop the spread of breast

cancer. Dr. Sarah Hurvitz, associate professor of medicine in the division of hematology/oncology and medical director of the UCLA Jonsson Comprehensive Cancer Center, was interviewed.

New drugs in development for ovarian cancer

[OncLive](#) featured Dr. Dennis Slamon, director of research at UCLA Jonsson Comprehensive Cancer Center, in an article discussing new opportunities and drug developments for treatment advances in ovarian cancer.

UCLA receives \$9.5 million to study link between substance use and HIV transmission

[MyScience.org](#) covered a new study led by Pamina Gorbach, a professor of epidemiology at the UCLA Fielding School of Public Health, and Steven Shoptaw, a professor in the departments of family medicine and psychiatry and biobehavioral sciences at UCLA. The researchers will use a five-year, \$9.5 million grant from the National Institute on Drug Abuse to continue investigating connections between substance abuse and HIV infection among Latino and African-American men who have sex with men.

'A welcome and long-overdue development' from the FDA

An article in [STAT](#) about how the U.S. Food and Drug Administration is allowing drug companies and device makers to provide health care, economic and other supporting information to payers and formulary committees was co-authored by John Osborn, a recent visiting scholar at the UCLA Fielding School of Public Health.

This week in 'Ask the Doctors'

UCLA Health internists Dr. Robert Ashley, Dr. Eve Glazier and Dr. Elizabeth Ko address health-related questions in the recurring "Ask the Doctors" column, syndicated by more than 50 outlets nationwide. Glazier is an associate professor of medicine, and Ashley and Ko are assistant professors of medicine. A sampling of stories from this past week's column:

- On cognitive dysfunction for elderly post-op patients, in Washington's [The Spokesman-Review](#)
- On Burkitt lymphoma, in [UExpress](#)
- On dentures and a balanced diet, in [The Oklahoman](#)
- On polymyalgia rheumatics, in Vermont's [The Brattleboro Reformer](#)
- On daytime wounds and healing time, in California's [Hanford Sentinel](#)
- On lung cancer screening, in Oklahoma's [Tulsa World](#).

QUOTED

“I’ve seen lawyers, physicians, and others who simply couldn’t go back to what they were doing before. When you see that, you believe that this problem is real.”

– Dr. Patricia Ganz in [Oncology Times](#)



Dr. Andrew Charles, a professor of neurology and director of the Goldberg Migraine Program at UCLA, commented in a [Medpage Today](#) article about emerging migraine treatments.

Dr. James Cherry, a distinguished professor of pediatrics and infectious diseases at UCLA’s David Geffen School of Medicine and Mattel Children’s Hospital, was quoted in an [Orange County Register](#) story a Dana Point doctor and vaccine skeptic who was placed on probation by the Medical Board of California for exempting a child from all vaccinations. The [Los Angeles Daily News](#) ran the article.

Dr. Robert Chin, assistant clinical professor in radiation oncology and member of UCLA Jonsson Comprehensive Cancer Center, was quoted in the KPCC podcast [Brains On!](#) He talked about what makes things radioactive and what he does as a radiation oncologist.

Dr. Gregg Fonarow, the Eliot Corday Professor of Cardiovascular Medicine and Science and co-chief of cardiology, was quoted in a [MedPage Today](#) article about a study of high-risk apolipoprotein L1 (APOL1) genotypes.

Dr. Patricia Ganz, director of cancer prevention and control research at UCLA Jonsson Comprehensive Cancer Center and professor of health policy & management and medicine at UCLA Fielding School of Public Health, was quoted in an [Oncology Times](#) article about the causes and possible remedies for cognitive deficits – also known as “chemo brain” – that is related to cancer treatments.

Dr. Wally Ghurabi, medical director of the Nethercutt Emergency Center at UCLA Medical Center, Santa Monica, commented in a [Santa Monica Daily Press](#) article on common causes of injuries during July 4th celebrations.

Sander Greenland, professor emeritus of epidemiology at the UCLA Fielding School of Public Health, was quoted in an article by [Bloomberg](#) about the risks and benefits of antibacterial products, GMO foods and nonstick coatings. [BNN Bloomberg](#), [Bloomberg Quint](#), [the Charleston Gazette-Mail](#) and [The Print](#) also ran the story.

Dana Hunnes, a senior dietitian at Ronald Reagan UCLA Medical Center and an adjunct assistant professor at the UCLA Fielding School of Public Health, commented in a [Snopes.com](#) article about fad diets and the claim that a person can live off a diet of potatoes and butter.

Emanuel Maidenberg, a professor of psychiatry and biobehavioral sciences at UCLA's Semel Institute, commented in a [Self](#) article about how best to talk to a friend with anxiety.

Nadereh Pourat, a professor-in-residence of health policy and management at the UCLA Fielding School of Public Health and director of research at the UCLA Center for Health Policy Research at the Fielding School, was quoted by [CALMatters](#) in a story about state programs that focus on making people healthier overall rather than just treating their chronic illnesses. The story also ran in [Medical Health News](#).

Dr. A. Nick Shamie, a clinical professor and orthopaedic spine surgeon with the UCLA Spine Center in Santa Monica, commented in a [Self.com](#) article on scoliosis.

Dr. Thomas Strouse, medical director of the Stewart and Lynda Resnick Neuropsychiatric Hospital at UCLA and Maddie Katz Chair in Palliative Care Research and Education, commented in a [PBS Newshour](#) story about the use of "palliative sedation" in patients with painful, terminal illness. The story also ran in [HuffPost](#).

Lekeisha Sumner, a professor of psychiatry and biobehavioral sciences at UCLA's Semel Institute, commented in a [Self](#) article about how best to talk to a friend with anxiety.

BRIEFS

The [New York Post](#) referenced Ronald Reagan UCLA Medical Center in the story of the first meeting between kidney recipient Lois Knudson, a special education teacher from Orange County, and New York firefighter Kevin Shea, who altruistically donated an organ to her in December 2017. Shea had survived the 9/11 terrorist attack on the World Trade Center and was the only one of 13 members of his Upper West Side firehouse to make it out alive.

The [Daily Mining Gazette](#) in Calumet, Michigan, cited a 2005 study conducted at UCLA Health showing the health benefits of animal-assisted therapy.

The [Pasadena Star-News](#), in an op-ed about a woman's fear of using elevators due to claustrophobia, referenced Ronald Reagan UCLA Medical Center and – in a [subsequent op-ed](#) – the UCLA volunteer who helped her overcome that fear.

The [Santa Monica Mirror](#) noted UCLA Medical Center, Santa Monica, in an article on development projects being considered by the City of Santa Monica.

[Healthline](#), in a story about iron and Alzheimer's risk, referenced a study from the department of psychiatry and biobehavioral sciences at UCLA linking high iron levels with Alzheimer's disease.

[Genetic Engineering & Biotechnology News](#) cited research from Drs. Antoni Ribas and Siwen Hu-Lieskovan, both members of UCLA Jonsson Comprehensive Cancer Center. The article referenced a clinical trial they're conducting to evaluate pepinemab in patients with anti-PD-1/PD-L1 refractory melanoma.

The [Richmond Register](#) in Kentucky featured UCLA research showing that sitting is bad for the brain.

[Men's Health UK](#), in a story about hunger, referenced a study from the UCLA Center for Human Nutrition finding that black tea may aid in weight loss.

[The Santa Monica Lookout](#) cited a 2015 report from the UCLA Center for Health Policy Research at the UCLA Fielding School of Public Health finding that almost 25 percent of Californians are obese.

An article in [Mumbai Mirror](#), a news site based in India, cited research led by Dr. Jody Heymann, dean of UCLA Fielding School of Public Health and founding director of the WORLD Policy Analysis Center at the Fielding School.

An article in [Malaysiakini](#), a news site based in Malaysia, cited research from the from the WORLD Policy Analysis Center at the UCLA Fielding School of Public Health reporting that many countries allow children under age 18 to marry with parental consent.

[The New York Times](#), in an opinion piece, cited research co-authored by Dr. Jeffrey Klausner, adjunct professor of epidemiology at the UCLA Fielding School of Public Health and clinical professor in the division of infectious diseases at the David Geffen School of Medicine at UCLA.

CONTENT CREATED BY MEDIA RELATIONS



[UCLA Newsroom](#): UCLA receives \$100,000 for pediatric cancer research from Hyundai Hope on Wheels

(Photo: Reed Hutchinson/UCLA)

 [Share](#)  [Tweet](#)  [Post](#)

[California: State's big population means more mosquito-borne infections](#) UCLA Health Connect blog

[Carnegie Corporation names two from UCLA 'Great Immigrants'](#) UCLA Newsroom



This report features media placements about UCLA Health, which includes the David Geffen School of Medicine at UCLA, Ronald Reagan UCLA Medical Center, UCLA Medical

Center, Santa Monica, UCLA Mattel Children's Hospital, the Stewart and Lynda Resnick Neuropsychiatric Hospital at UCLA, the UCLA Health Clinics and the UCLA Faculty Practice Group.

It also includes placements about the UCLA Fielding School of Public Health, the UCLA School of Nursing, the UCLA School of Dentistry, the UCLA Jonsson Comprehensive Cancer Center and the UCLA Eli and Edythe Broad Center of Regenerative Medicine and Stem Cell Research.

UCLA's Health Sciences Media Relations office e-publishes this report weekly. For more information, please contact Tami Dennis, executive director of media relations, or call the Media Relations office at (310) 267-7022. Media Relations also offers publicity for new research, medical breakthroughs, inspirational patient stories and more. To identify the appropriate public information officer for your department, visit <https://www.uclahealth.org/Newsroom/Pages/Media-Relations-Directory.aspx>.